

# The Perfin Society Bulletin

---

## THE SOCIETY'S OFFICERS

PRESIDENT J. Nelson  
SECRETARY J.M. Rucklidge  
TREASURER  
  
LIBRARIAN E.G. Longbottom  
BULLETIN ED. F.S Tully

CATALOGUE ED Dr. T.A. Llewellyn-Edwards

## PUBLICATIONS

AUCTIONEER H. Skinner  
PACKET SUPT. D.N. Scott

---

BULLETIN No:- 236

Subscription £4 per annum

---

## CONTENTS

## PAGE

Editorial.	2.
Membership changes.	2.
The first perfin.	3 to 6.
Midland and South Western Junction Railway ?	7.
Perfin MB/W.	8.
Additions to Railway Perfins Handbook	9 to 12.

Auction No. 5. (1988).

Railway Worksheets for 1988 : 4 pages.

## EDITORIAL

Please accept my apologies for any troubles caused through the late production of this Edition.

It appears that a postal strike developed around Harrow which prevented mail being received or despatched.

As a result, all my 'copy' disappeared for about a couple of weeks.

Also I have noticed that my mail is now taking 24 hours longer than usual. First Class 3 days and Second Class 5 - 6 days. A coincidence, no doubt.

However now things are getting back to normal, I hope you will tolerate the results.

## MEMBERSHIP CHANGES

JULY 1988

### New Members

WHITEHEAD M. J.

DEVERELL MRS. J.

CLARK R. I.

MERRYWEATHER B. D.

POLZIN W. F.

### Change of Address

CHAPLIN B. J. T.

PARNALL D.

HALL W. J.

ANDERSEN D. H.

COATES B. B.

LLEWELLYN-EDWARDS Dr.T.A.

\*\*\*\*\*

## THE FIRST PERFIN

by Roy Everett

John Nelson wrote an article in Bulletin 234 page 4, but unfortunately in the copy I received, pages 4 and 9 had missed being printed, so as the article did not appear fully I wrote to him. (Editor: The pages were replaced at once when the error was made known.)

Other readers may also be in the dark as to the content of page 4, but suffice it to say that this went into greater detail to establish the point that he made on the relevance of the SC perfin he later illustrates and provides information on the other perfins utilised by Copestake.

The illustration on page 5 (Fig 3) is of an underprinted 'type 1' style over the gum, the pen cancel is "obviously to demonstrate to the Postmaster General that a valid stamp had not been defaced by perforation and also that there was no intention to use it, or stamps like it, until official sanction was given", to quote Mr. Nelson's letter.

That being so, one cannot attribute 'first perfin' status to this perfin for postal relevance, nor could one attribute it to the prime position for fiscal relevance.

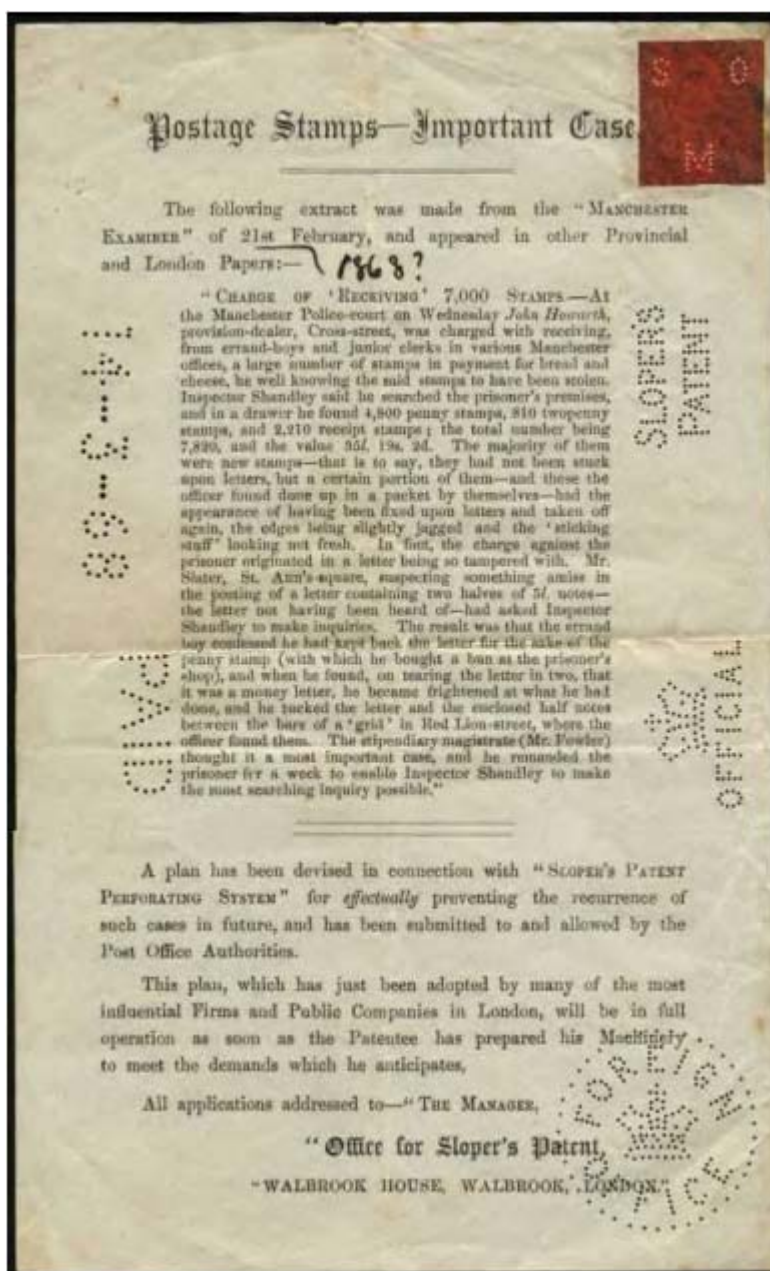
It does appear that the belief that Sloper started making perfin machines after the acceptance of his patent in 1858 for Government Departments and private enterprises is correct. Vallancey mentions it and Nelson confirms it. Yet it is mentioned that not until 13th March 1868 for postal purposes, and 27th June 1870 for fiscal purposes, were perfins validated.

continued/

## THE FIRST PERFIN (Continued)

That being so, just what were Slopers perfin machines doing between 1858 and 1868? Vallencey states that the Post Office machine "has been applied to Money Orders issued from the Chief Money Order Office in London, for the purpose of perforating the date through the orders", from a letter of F. I. Scudamore to Sloper 30th May 1870.

At, or around this time, Sloper was issuing advertising leaflets, see illustration Fig 1, (courtesy of 'Glass Slipper Catalogue' 7/8/87).



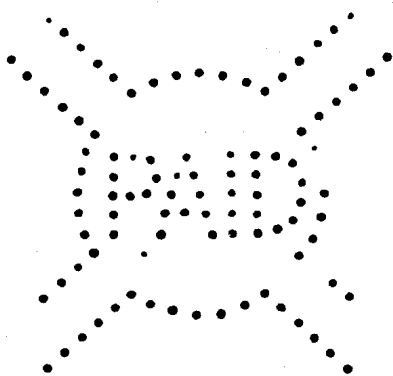
(FIG. 1)

continued/

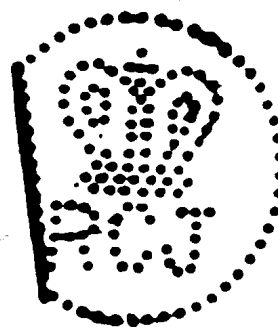
## THE FIRS PERFIN (continued)

This leaflet is after Post Office authorisation as it says so on it, but it does give an indication of what Sloper had been up to, the "stamp" at the top right corner is of 'red paper'.

Also one can see from a later Bank of Scotland cheque cancellation (Fig 2) fiscal usage in 1899, the adoption of Fig 3 by the Royal Courts of Justice by Fee Order of 4/7/1884 to cancel their stamps as from 18/7/1884. (R. G. Booth Revenues Catalogue).

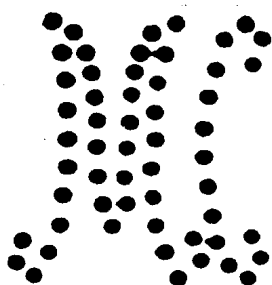


(FIG. 2)

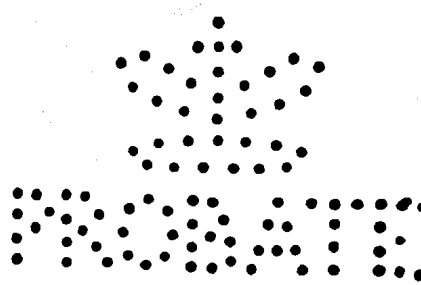


(FIG. 3)

Also the adoption of the practice by the Mayor's Court, Fig 4, and the adoption by the Probate Office, Fig 5.



(FIG. 4)



(FIG. 5)

Continued/

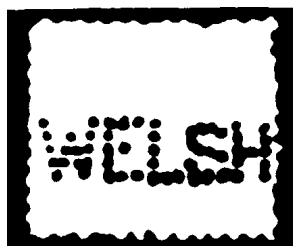
## THE FIRST PERFIN (continued)

So it appears that the machines were being used for validation or invalidation of documents in the early years, this carrying on in the later years after Post Office approval.

This though being the case, what if a copy got into the post and was passed through?

Would we go to the extent of the "Perfin Club" and ostracise the item from the perfin catalogue proper, noting it as illegal usage in an addenda?

I cite an instance related to Portugal: The King signed the Directive allowing perfinning on 30<sup>th</sup> March 1884, the Postmaster issued it on 5<sup>th</sup> April 1884, yet a clearly postmarked example of the WELSH perfin on the issues for Madeira is dated 01/02/1871 (Fig 6).



(FIG. 6)

.....  
Illustrations drawn from 'Glass Slipper Catalogues' with due acknowledgement and thanks.)

---

EDITOR: Please note that the illustrations, Fig 3, 4, 5, from the above article, along with others, may be consulted in our publication 'G.B. Official Perfins' by T.A. Edwards and B.C. Lucas, obtainable from the Publications Officer.

\*\*\*\*\*

## MIDLAND AND SOUTH WESTERN JUNCTION RAILWAY?

by Mrs. M. Rosemary Smith.

In the book, 'Railway Perfins of Great Britain' by Ron Bowman, the only die recorded for the Midland and South Western Junction Railway was MS/WJ 15,10/14,7 5mm. (This was the only one identified too in Tilles — 541)

In Ron Bowman's book we are informed that this die was only found on Q.V. stamps but dates well into E7 reign.

In 1985 I acquired, and reported, an official Midland and South Western Junction Railway Information Post Card dated 5/3/07 with ½d E7 stamp. This had a new die, MSW 15,12,15 6½ mm. This would lead one to believe that this die superseded the MS/WJ on Q.V. stamps.

Now I have come across a picture post card dated 29/6/10 with ½d E7 stamp and postmarked Swindon. The perfin is Tilles 539.1 MSW 11,9,12 5mm. The card was sent by a private individual to a friend outside Bristol, informing him of train times from the local station but saying he will have to change at Bristol.

Is this information too vague to be a possible Midland and South Western Junction Railway die?

EDITOR: Please send replies either direct to Rosemary or to me for forwarding.

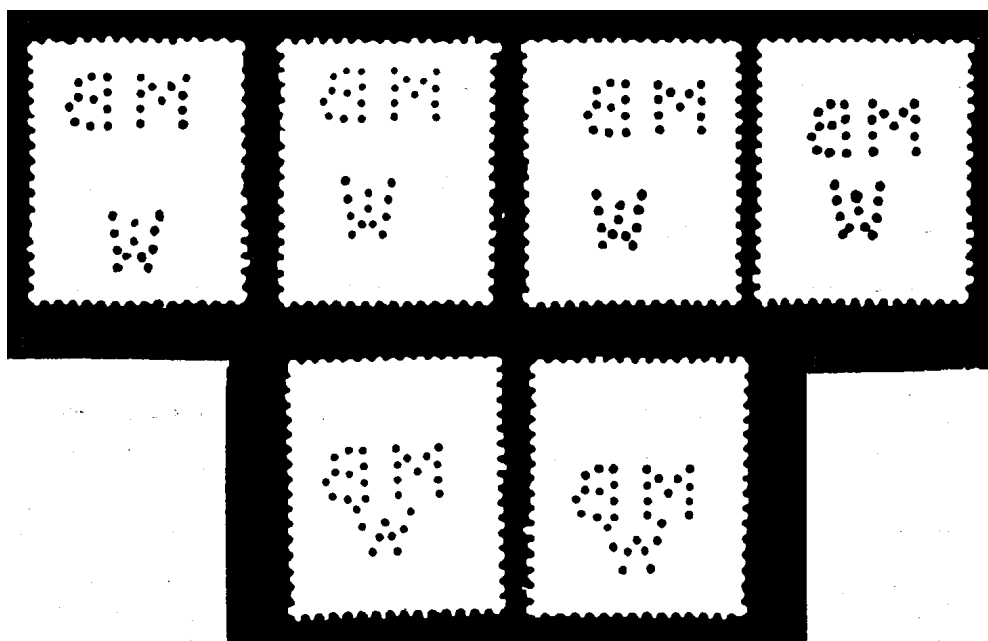
\*\*\*\*\*

\*\*\*\*\*

PERFIN MB/W

by W. Hanson.

Illustrated below are 4 dies of Tomkins Catalogue No. 82.2: 11,11/12 - 4½mm - "Metropolitan Borough of Wigan", together with two other dies 11,11/9 - 4½/4 mm, beneath.



Could anyone enlighten me as to whether or not all six are from the "Metropolitan Borough of Wigan", and if so, does anyone hold any further variations ?

Replies may be sent direct to me  
. or to the Editor for forwarding.

\*\*\*\*\*



## THE PERFIN SOCIETY RAILWAY PROJECT

Please note, members who possess the Society Railway Handbook need only provide relevant details of material additional to that thus far published. Those members who do not have the above publication, please give details of all appropriate material they have for the particular railway company indicated on the worksheets.

Your co-operation on the basis outlined above will be such appreciated whilst at the same time avoiding the need to repeat all the information published so far, on the enclosed and future worksheets.

## ADDITIONS TO THE RAILWAY PERFIN HANDBOOK

The following information was received from members in response to railway worksheets Nos. 1, 2, 3, 4 and 5, 1987.

June 13th 1988.

E.W. Francombe

---

<u>Gt. Central Ry.</u>	<u>Items/stamps.</u>	<u>Postmarks</u>
	Cover bearing KG5 (1912-1922) 1d. G. Central Ry. from Harwarden Bridge Station.	Shotton 3.3.1919 (single ring)
	Form from Gt Central Ry Secretary's office, Marylebone Station, London N.W. addressed to Messrs. Little & Lamonby Penrith.	London N.W. 6.6.1913.
	A number of die variations re hole positions resulting from damaged/ worn dies - ? have been reported all on KE7 1d values.	--fast Jan 1906 St Johns Wood Feb. 1903 Plymouth Nov 1908 Newcastle-on-Tyne Dec. 1908 Lincoln. Nov ? Victoria Docks Nov 1908
	KE7 ½d KG5 (1912-1922) 2d	Sept 1904 -
	Postcards bearing KE7 ½ds.	London NW 9.11.1901. Manchester 21.2.1903. Sheffield EDC 22.2.1911
	Gt. Central Ry. Official form Requesting testimonial bearing KE7 1d -Outward- -For return- Postcards bearing KG5 - ?	Gorton 29.5.1905 Openshaw 30.5.1905. Hull 9.4.1914. Hull 4.6.1914. Leeds 5.2.1915. Hindley 8 & t 15.1.1902. Manchester 31.10.1902 20.1.1902 31.10.1900. Wigan 29.1.1902. Gorton 878 Duplex -.
	QV 1d Lilacs (Die 2)	

Continued/

<u>Gt. Central Ry. (Cont'd) Items/Stamps</u>		<u>Postmarks</u>	
	QV ½d Jubilee.	-	16.07.1900
	“ “ “ (Blue Green)	-	10.07.1900
	“ “ “	Hull	22.07.1899
	KE7 ½d Bl. Green	-	30.04.1902
	KE7 1d	Rotherham	19.03.1903
	KG5 1d Pair.	Hull	20.02.1913
	KE7 ½d	Rotherham	01.12.1902
	KE7 ½d	Mexborough	06.12.1902
	KE7 1d	Gorton	17.10.1902
	KE7 1d	Doncaster	17.10.1902
	KE7 ½d	New Mexborough	23.12.1902
	KE7 ½d	----zlehead Bridge ----	
	KE7 ½d	Bulwell	05.02.1903
	KG5 (1912-22) 1½d & 2d.	-	-
(E.12.9.1897.	Gt. Central Ry. - ? Document	London machine cancel	
Date(	acknowledgement bearing	22.4.1919.	
(L. 3.3.1919.	KG5 ½d (1912-22)		

<u>Gt. Eastern Ry. 1. QV 1858 1d Plates. Plate No.</u>			
Die I	QV 1d plate 118	London type Duplex, E/23	
	QV 2d plate 13	“ “ “	
	QV 1d plate on) 101	-	30.06.1869
	piece ) 102	-	28.06.1869
	QV 1d plate 112	-	30.06.1869
	QV 1d plate 118	-	21.07.1869
	QV 1d plate 153	-	-
(E. 28.6.1869	QV 1d plate - ?		E/30
Date(	QV 1d plate 109	-	-
(L. 2.1.1870	QV 1d plate 125	London	02.01.1870
	QV 1d plate - ?		E/16

<u>Gt. Eastern Ry. 2. QV 1d plates Plate No..</u>			
Die II	196	-	-
	207	-	-
	219	-	-
	QV 1d Venetian Red	-	-
	QV 1d Lilac (Die I)	London E	17.???.1881
	QV 1½d Line engraved Plate ?.	London EC	25.01.1881
(E. 18.7.1877		Geometric shape cancel –	
Date(		“Cohen” type 3	
(L. Ldn 1893	QV 1d plate 125	Oval Duplex No. 36	
	QV 1d plate 188	-	-
	QV 1d plate 191	-	18.07.1877
	QV 1d plate 181	London	- 1893
	QV 1d plate 190	London	E/30

Continued/

	<u>Items/Stamps</u>	<u>Postmarks</u>
Gt. Eastern Ry. 3. Die III (E. ? Date( (L. ?	QV 1d Lilac (Die II) QV 2½d (1883-84)	London Type Duplex E/32 Traces of heavy Duplex
Gt. Eastern Ry. 4 Die IV. (E. 1.5.1895 Date( (L. 10.12.1894	QV 1d Lilac (Die II) QV 1d Lilac QV 2½d (1883-84) QV ½d SG. 187. QV ½d Jubilee	London EC 01.05.1885 London SE 19.09.1894 Traces of heavy Duplex - ??.04.1885 London SE 10.12.1894
Gt. Eastern Ry. 5. Die V.   (E. Ldn 1887. Date( (L. 3.1.1895.	QV 1d Lilac (Die II) QV 1½d Jubilee QV 2½d Jubilee  Cover bearing embossed crest of Gt. Eastern Ry. In circle around 8 shields. QV 1d Lilac (Die ?)  QV ½d Jubilee Verm. QV 2½d Jubilee QV 1d Lilac (Die ?)	- - London 05.05.-? London - London EC hooded circle 26.09.1893 London E 15.07.? London 30.09.1889 London 06.03.1891, 18.02.1891, 11.10.1893.
Gt. Eastern Ry. 6. Die VI.	No further information advised	
Gt. Eastern Ry. 7 Date( (L. 29.1.1909	KE7 ½d on cover bearing embossed G.E.R on flap  KE7 ½d QV 1d Lilac (Die II) QV 1d Lilac (Die ?)  QV 1½d Jubilee QV 2½d Jubilee KE7 ½d KE7 1d KE7 2d	London ?  London 20.06.1906 London 22.10.1896 London 18.08.1896, 25.3.1895 03.12.1895 02.05.1900 - 07.05.1900 - 07.07.1901 London 07.4.1903, 19.2.1907 London 13.12.1906 & 29.01.1909 - -

	<u>Item/Stamps</u>	<u>Postmarks</u>	
Gt. Eastern Ry. 8 Die VIII	KG5 1d -?	London 250.	12.05.1912
	KG5 1d (1912-22)	London 108.	16.10.1916
	KG5 ½d Downey 1912	Stratford	02.01.1913
	KG5 ½d (1912-22)	-	23.06.1919
	KG5 1½d (1912-22)	London EC	18.06.1918

Postcard bearing slogan cancel  
- date 24.05.1924 but on a North  
Eastern Ry. Card KG5 ½d  
From London to Southport.

KE7 ½d	-	-
KG5 5d	London, Liverpool St.,	26.09.1921
KE7 ½d	Special cancel "E. Crown R"	
KG5 ½d (1912-22)	Stratford SE	- 1914.

(E. 12.5.1912  
Date(  
(L. 26.9.1921

---

(Conclusion)

\*\*\*\*\*

\*\*\*\*\*

A reminder to put 12<sup>th</sup> November into your diary, if not there  
already, as this is the date for the Autumn London Meeting.

\*\*\*\*\*