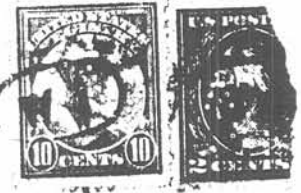
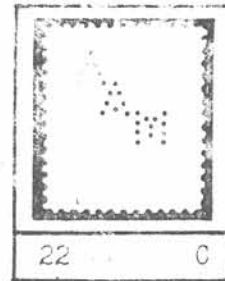


WELDING AND CUTTING DEPT.  
**OXWELD ACETYLENE COMPANY**  
36TH ST. AND JASPER PLACE  
CHICAGO



state Bank of Wonevoc,  
Wonevoc, Wiscensin.



The cover shown above bears the corner card of the "Welding and Cutting Department, Oxweld Acetylene Company, 36th. Street and Jasper Place, Chicago, Illinois. The cover is franked with 10 cent Monroe and two cent Washington stamps that are punched with perfin pattern A22 (AAM diag.). The pattern is listed as being used by the Acetylene Chemical Company of Chicago, Illinois. While there is no date visible on the registered cover, the enclosed letterhead is dated July 9th., 1915.

As is noted on the letterhead shown below, the Oxweld Acetylene Company had locations in Newark, NJ; Chicago, IL; and Los Angeles, CA. While the letterhead illustrates offices and factories at 36th. Street and Jasper Place in Chicago and 646-680 Frelinghuysen Avenue, Newark, NJ while the Los Angeles location is noted on the letterhead's upper left. Also note the Pilot Lighting Plants' trade mark.

NEWARK

CHICAGO

LOS ANGELES

# OXWELD ACETYLENE COMPANY



OFFICES & FACTORY - CHICAGO ILL.  
36TH STREET & JASPER PLACE



## LIGHTING PLANTS



OFFICES & FACTORY - NEWARK, N. J.  
646-680 FRELINGHUYSEN AVE

CHICAGO

July 9th, 1915.