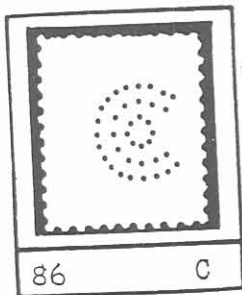
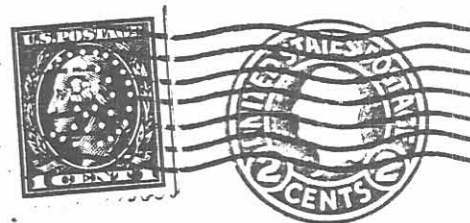


A Perfin First Day Cover - C86

Rudy Roy (#1124)

After 5 days, return to
CAREY MACHINERY & SUPPLY CO.,
S. W. Cor. Lombard and Calvert Sts.
BALTIMORE, MD.



Norton Company,

Worcester,

Mass.

The illustrated cover, a two cent envelope, *Scott Catalog* number U-249, with a perfin pattern C86 added to make up the first-class rate, is a First Day Cover. How is this possible? Actually, it is a first day of RATE cover!

To help finance U.S. participation in World War I, Congress increased postal rates in late 1917. The first-class rate went from two to three cents per ounce. Other rates were increased accordingly on November 2, 1917.

The mail clerk at Carey Machinery and Supply

Company knew the postal rates, and affixed the one cent perfin to this cover prior to mailing. It is not always the case, for in my collection I have numerous perfin covers mailed during this period that were either returned for additional postage, or forwarded with postage due.

We perfin collectors need to thoroughly study our perfin covers so that all relevant data is noted. While all perfin covers should be commercial mail, and thus basically utilitarian, assuming so without an in-dept analysis may result in missing something.