

International Harvester Company - Various Patterns

David A. Cooper (#1773) and John F. Lyding (L116)

At first blush it appears dumb to have the International Harvester Company listed under the letters "C" and "I" in the catalog. However, catalogs classify patterns under the first letter from the upper left, hence both "C" and "I" are logical. We have shown several International Harvester perfin covers to illustrate some of the many differences. Figure 1 illustrates a cover posted in Chicago, Illinois on October 10, 1927 from the McCormick Works of International Harvester Company, Inc.

located at Blue Island and Oakley Avenues. The perfin is a partial showing only the letters "HC" on the left of the stamp and part of the letter "I" on the right. This is perfin pattern I43. According to *The Catalog of United States Perfins*, 1979 this pattern was used by Harvester from Chicago. A latter A&C correction lists Wisconsin Steel Company of South Chicago as a user. Wisconsin Steel Company was a division of Harvester.

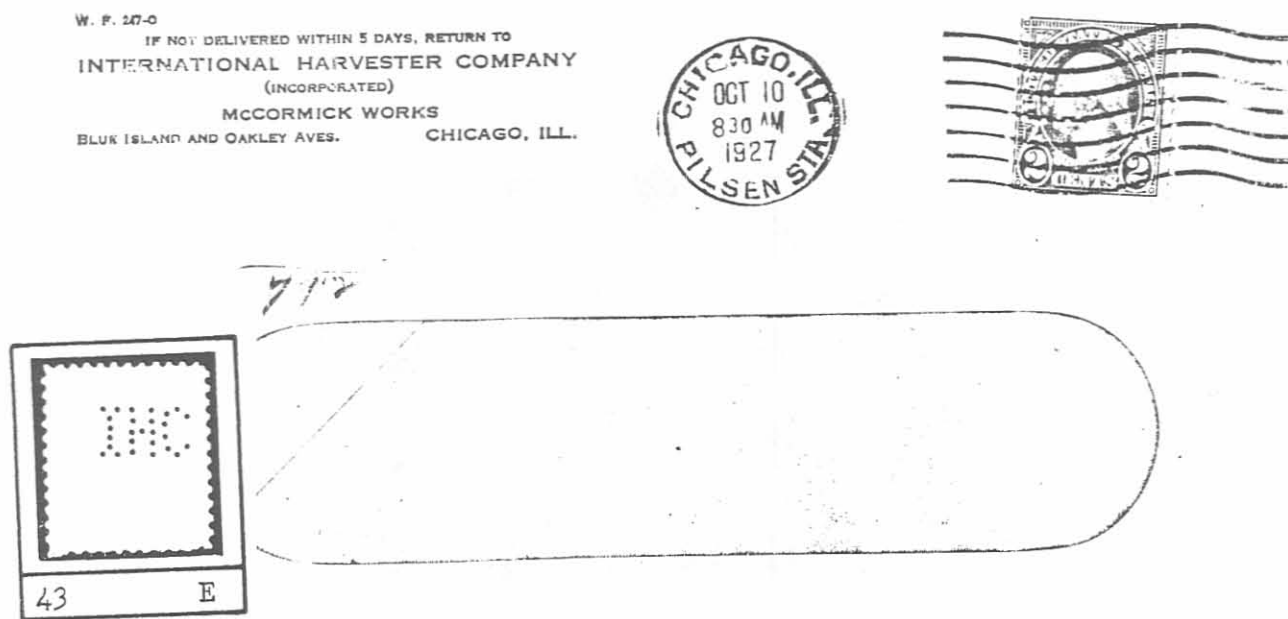


Figure 1. McCormicks Works

Figure 2 shows another Chicago mailing, this from the West Pullman Works, 1015 West 120th St., Chicago, Illinois on August 15, 1927. In this case the perfin is complete and may be identified as perfin pattern C152-12 (no distant hole and control hole in position 5½ - See Figures 3 & 3A for layout of distant and control holes). The *Catalog* lists Chicago, Illinois as the city of use.

The damaged cover front of Figure 4 was posted by the Collection Agency of Harvester located in

Hamilton, Ontario on October 11, 1911. This was the location of Harvester's head office in Canada. The pattern is C25 (distant hole 0 and code hole 6).

The next three illustrations are useful to show the code holes and they are from single stamps. These are: 1. C28 (code hole 8 - Montreal, P.Q.) on a 3¢ brown, Figure 5; 2. C29 (code hole 8 - Montreal, P.Q.) on 10¢ Mountie, Figure 6; and 3. C26 (code hole 6½ - Winnipeg, M.B.) on the 20¢ Corvette Figure 7.

W. F. 247-0

IF NOT DELIVERED WITHIN 5 DAYS, RETURN TO
INTERNATIONAL HARVESTER COMPANY
(INCORPORATED)
WEST PULLMAN WORKS
1015 WEST 120TH ST. CHICAGO, ILL.

AUG 1927
12 M

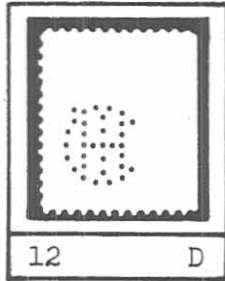


Figure 2. West Pullman Works

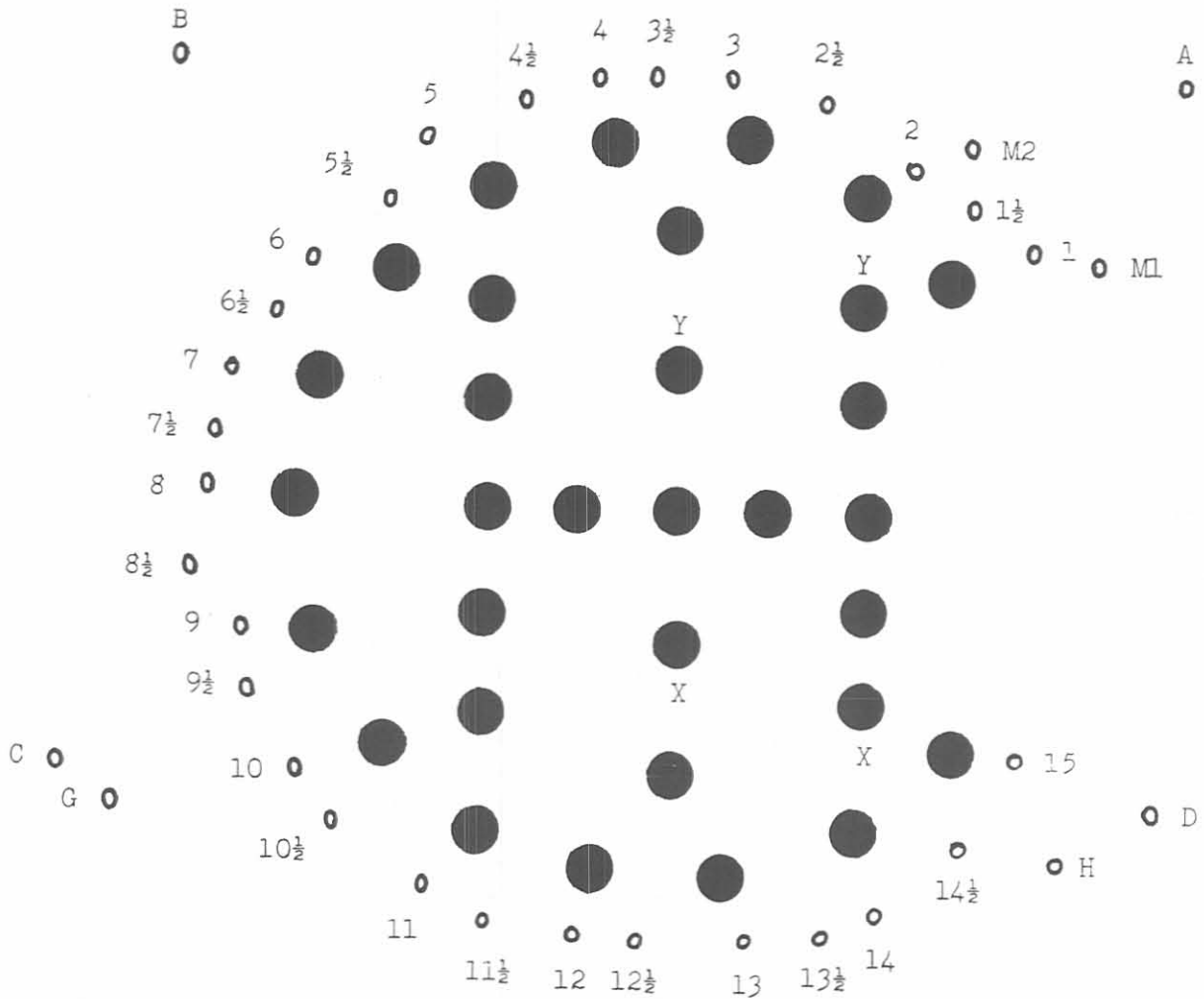
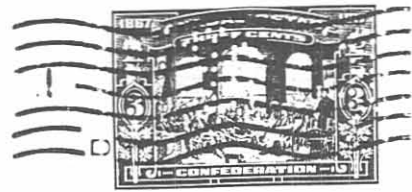


Figure 3. Layout of holes perfin pattern C152 - International Harvester Company

AL .S. RETURN TO
COLLECTION AGENCY
INTERNATIONAL HARVESTER COMPANY OF CANADA, LIMITED
HAMILTON, ONT.

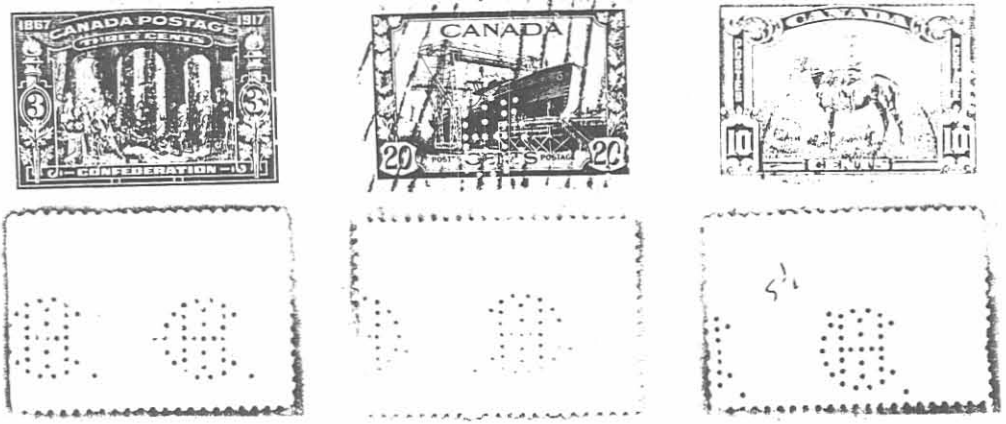


C25

G

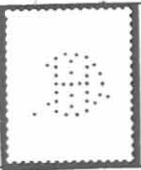
INTERNATIONAL HARVESTER COMPANY OF CANADA
 C(HI) HAMILTON, ON.
 1903-1967
 1909/11/30-1962/04/17 1910/05/11
 See Addendum A. E. F. H C

Figure 4. Collection Agency - International Harvester Company



INTERNATIONAL HARVESTER COMPANY OF
 C(HI) MONTREAL, P.Q.
 1903-1957
 1909/10/08-1955/03/— (See C25)
 See Addendum A. E. F C

Figure 5. C28



INTERNATIONAL HARVESTER COMPANY OF
 C(HI) OTTAWA, ON.
 1903-1951
 1910/03/06-1947/—/— (See C25)
 See Addendum A. E. F. I. J C

Figure 6. C29



Figure 7. C26

INTERNATIONAL HARVESTER
 C(HI) WINNIPEG, MB
 1911-1949
 1924/10/27-1942/03/24
 See Addendum A. E. F. I

What is an International Harvester perfin with missing code hole? An irritation, unless it is one of a pair. Figure 8 illustrates such a pair. The stamps are *Scott Catalogue* number 163, the 1¢ green arch. The pair was damaged with split gum, so I soaked off the gum and while damaged, it looks better now. The perfin is code hole 11 (i.e., C31, Saint John, NB), but please note that the code hole is missing on the right-hand stamp.

The cover illustrated in Figure 9 was posted at Saint John, New Brunswick, in 1911 (probably November 6). While the corner card may appear to be a rubber stamp, it is not. The corner card, printed in red on the dark manila cover, lists the firm's Canadian name, "International Harvester Company of Canada, Limited. The perfin pattern

is C31 (code hole 11 - see Figure 3A for layout of code holes in Canadian IHC perfins) listed in *Canadian Stamps with Perforated Initials*, 1985, J.C. Johnson and G. Tomasson. N.B. Johnson and Tomasson have used the term "code hole" rather than the American term "control hole." In addition, since all Canadian C(HI) perfins have what US catalogers would call "distant hole 0" there is no need to note this in the Canadian Catalog.

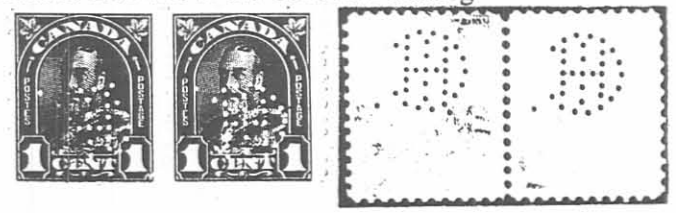


Figure 8. C31 - Code hole missing on right hand stamp

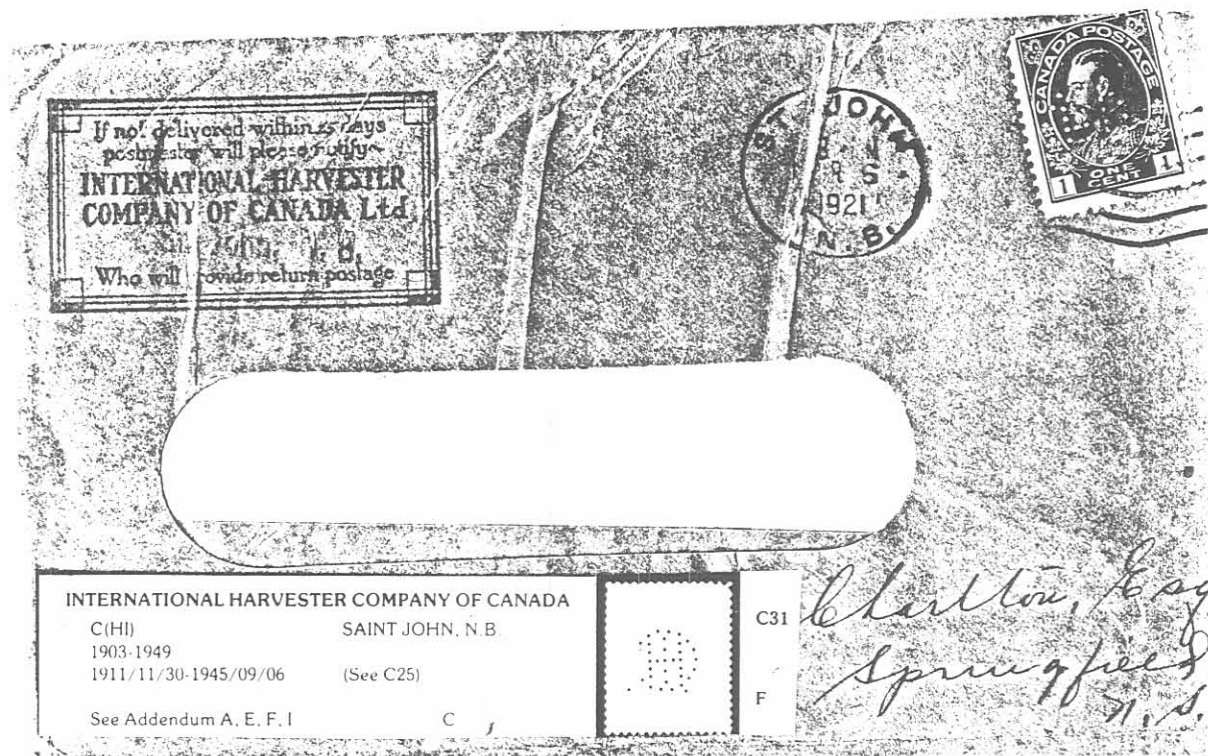


Figure 9. Posted at Saint John, New Brunswick