

Discoveries add to story of Panama-Pacific perfin

Further notes on P188 (PPI/ECO) by David Savadge (#43-L)

As a researcher and historian dedicated to all aspects of the 1915 San Francisco World's Fair, known as the Panama-Pacific International Exposition (PPIE), finding three new covers and one cut piece was a special treat.

The first cover, initially canceled twice by a San Francisco mute double-ring oval of which only the lower portion is visible, was additionally canceled with a

business and administrative offices continued to function through at least March 1916 to handle matters relating to the return of displays, distribution of awards and prizes and shipment of exposition coins and medals. Joined



P188
The Panama-Pacific
International
Exposition
Company

business and administrative offices continued to function through at least March 1916 to handle matters relating to the return of displays, distribution of awards and prizes and shipment of exposition coins and medals. Joined multiples of pattern P188 are scarce. I own an off-cover strip of three on the 2¢ PPIE commemorative stamp and knew previously of a cover bearing a perfinned pair of the 1¢ PPIE stamps.

The four cents postage used indicates a double weight first-class rate. The cover shows signs of once holding something thicker than a normal letter, probably a souvenir medal in a cardboard holder. The third cover (Figure 3) shows a new earliest known usage of perfin pattern P188. This discovery moves the earliest known usage date from November 14, 1912, to March 4, 1912, a jump backwards of more than eight months.

For the final discovery, instead

(Continued on page 94)

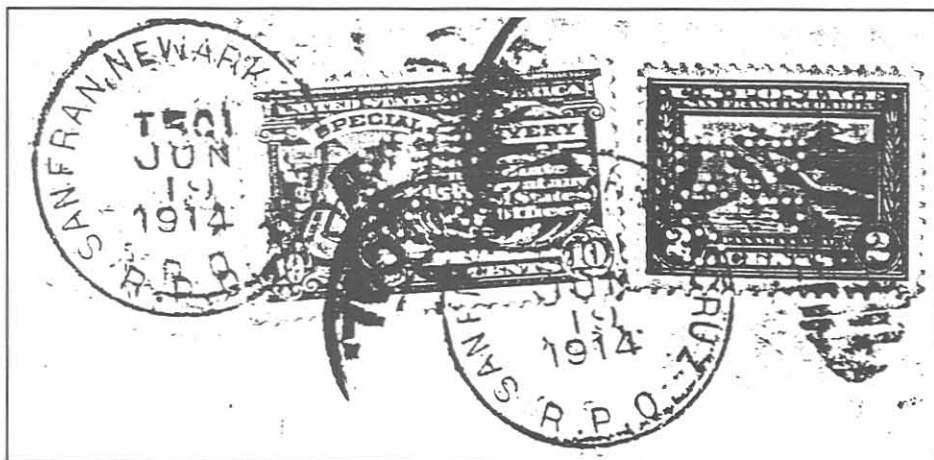


Figure 1 (left) shows the first known use of the PPI/ECO pattern on a special delivery stamp. (Enlarged)

duplex of the San Francisco, Newark, and Santa Cruz RPO on June 19, 1914, as a transit marking. Figure 1 is an enlargement showing these details.

This is the first example known to me of the PPI/ECO perfin on a special delivery stamp. A Berkeley, California, receiving mark (June 19, 1914 - 6:30 PM) appears on the reverse.

The next cover (Figure 2) is the first example known to me of the PPI/ECO pattern in block format, either on or off cover. The cover illustrates post-fair usage, having been postmarked by a San Francisco, California, duplex at 7:00 PM on January 27, 1916. The fair closed to the public on December 4th of the previous year, but the

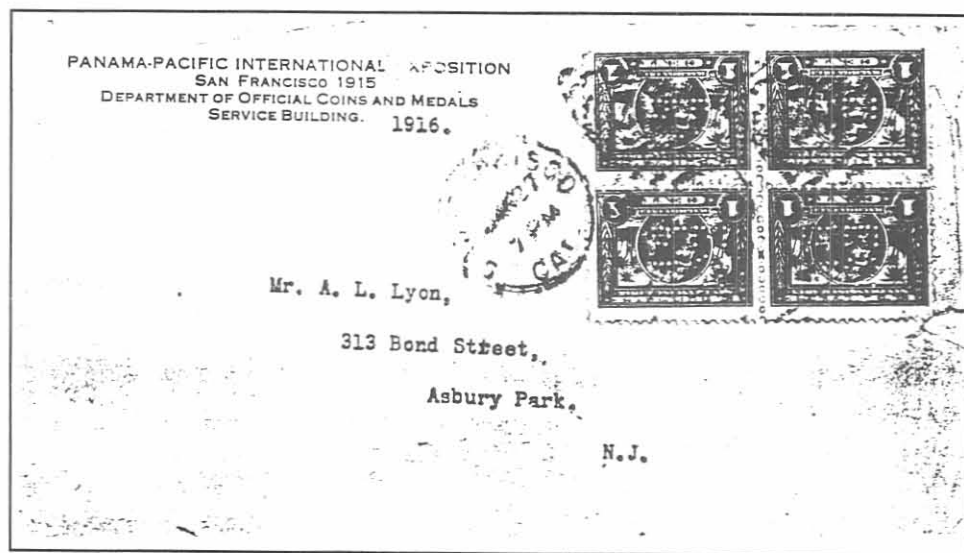


Figure 2 shows (above, reduced) a cover bearing the first known use of the PPI/ECO pattern in block form.

Earliest PPI/ECO use is March 4, 1912

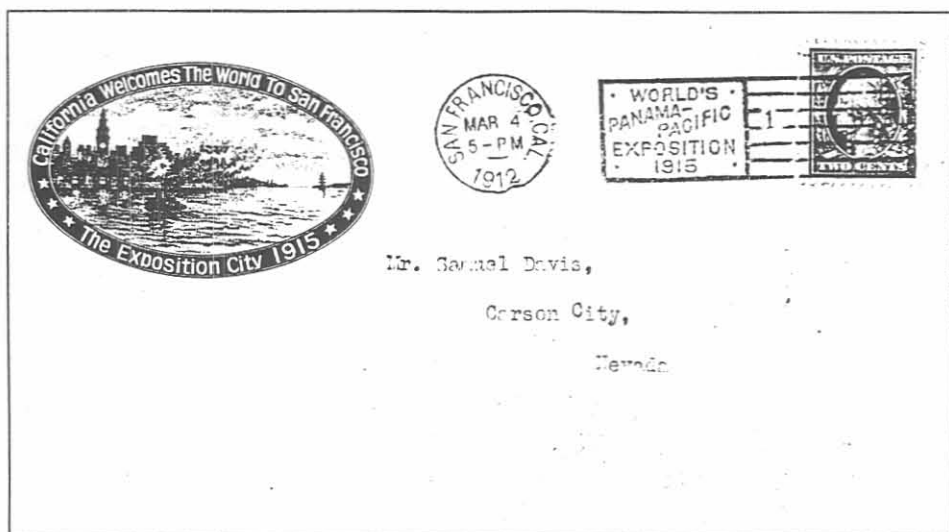


Figure 3 (above) shows the earliest known usage of the PPI/ECO perfin: March 4, 1912.

(Continued from page 93)

of a photo copy I have a sketch that I drew with the owner's permission.

The item is a two-by-four piece, containing a vertical pair of the 2¢ Panama-Pacific commemorative with pattern P-188 canceled November 6, 1915, by the Exposition's Model Post Office International Machine. What is interesting about this pair is the fact that the two perfins are mirror images.

This pair proves that the PPIE business office simultaneously punched multiple strips of stamps after folding them along a line of perforations.

We still do not know the actual layout of the perfin device, that is, how many patterns could be punched at once.

Many thanks to Frederick Langford for allowing me the

chance to examine this unique item.

I am always interested in any information relating to the Panama-Pacific International Exposition, be it perfins, stamps, covers, or general history.

Every little piece of data helps. Photocopies are especially helpful.

I will also try to answer any questions that members may have on this world's fair.

Members may write Savadge at the address below.

Please include an SASE.

Dave Savadge

PO Box 580

Livermore, CA 94550

PPI 1915
ECO 03E