

The **PERFINO** Bulletin

Volume 54, Number 3

Whole Number 527

When was the first perfin used in your state?

Richard Learn's listing will tell you.

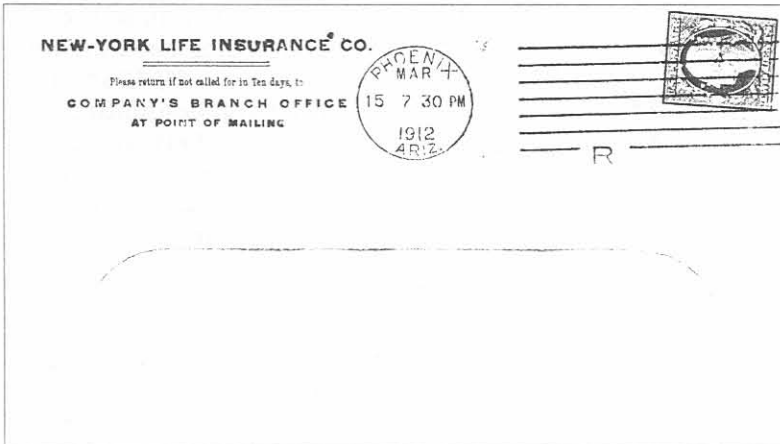
The first reported use of a U.S. perfin was on May 22, 1908, by Filene's Sons Department Store in Boston (the WFS/Co pattern, catalog #W91). A cover backing up that claim is owned by Robert J. Schwerdt (#505L). The second known use of a U.S. perfin was four days later, on May 26, in Chicago, when B.F. Cummings Company used its BFG/Co. perfin for the first time. That cover is owned by Paul Gault (#744).

The Filene's Sons and Cummings perfins are also the first ones used from their respective states: Massachusetts and Illinois.

But what about the first perfins used in the other 48 states and the District of Columbia?

Compiling a list of those earliest known uses has been a goal of Richard Learn (#3265), who started the list as an outgrowth of a project to record all the perfin patterns used in 1908 and 1909—the real pioneer perfins in the United States.

Learn is sharing his list of the first known use of perfins in each state on



The first known use of a perfin in Arizona was on March 15, 1912, a month and a day after Arizona became the nation's 48th state. A perfins cover postmarked February 14, 1912, would be a real first day cover. An earlier postmark would make the cover a territorial.
(From the collection of Bob Szymanski)

page 49 of this issue. It is a list that is almost certain to send you scurrying to your collection to prove that it is not up to date.

That's fine. That's exactly what Learn hopes you will do. The list is based on his own collection and other covers he knows about. He's confident that there are covers out there with earlier postmarks than some of those he has listed.

The most recent cover to be a "first" is a Union Pacific Coal Company UPC (U63) used in Rock Springs, Wyoming. Did it take almost 40 years for perfins to make it to Wyoming? Nevada shows a first use date of May 19, 1944. Mississippi didn't get its first perfin user until 1931. Both Alaska and Hawaii show a first use of perfins in 1938—nearly 20 years before they became states. The In-

(Continued on page 48)

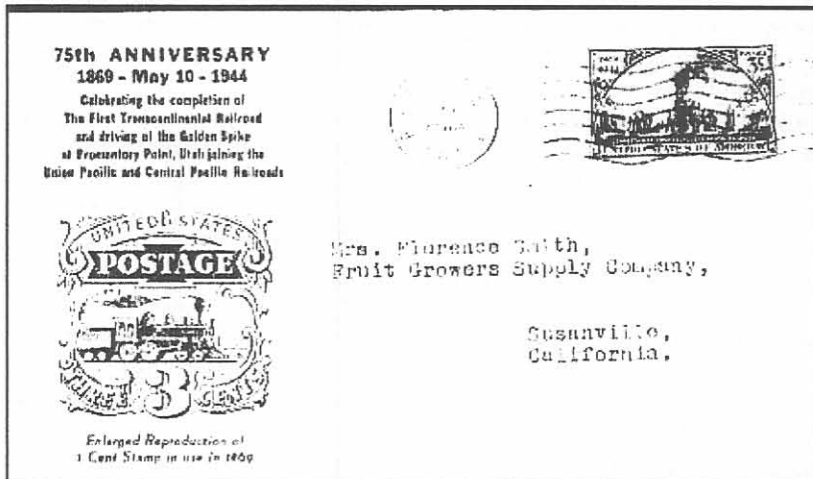
Have a cover earlier than the one listed here?

Let Richard Learn know so the list can be updated.

(Continued from page 37)

ternational Paper Company of New York undoubtedly sent some of its perfin to Alaska with personnel interested in the then-territory's vast timberlands. Not surprisingly, the first perfin used in Hawaii is the T.H.

Adele Ottenheimer's *Catalog of United States Perfins by Location* lists only one perfin user for Alaska, by the way: the White Pass and Yukon Railway of



Skagway (WP/&/YR, catalog #W171). The 1998 U.S. perfins catalog says the pattern is known on U.S. stamps issued between 1902 and 1918, which means it was used only when Alaska was a territory. Does anybody have W171 on a cover with an Alaska postmark?

THE FIRST KNOWN USE OF A PERFIN IN NEVADA was on May 19, 1944, when a Union Pacific perfin was used nine days late on a cover commemorating the 75th anniversary of the driving of the golden spike which joined the Union Pacific and Central Pacific Railroads.

(From the collection of Bob Szymanski)

Arizona saw its first perfin usage exactly a month and a day

after it joined the Union on February 14, 1912. The user was, curiously enough, the New York Life Insurance Company: perhaps an enthusiastic insurance salesman! Like Hawaii and Alaska, however, New Mexico recorded perfin usage while it was still a territory. The New Mexico cover, with a Mountain States Telephone perfin (M227) is postmarked May 4, 1911. New Mexico didn't become a state until January 6, 1912.

If you can provide earlier usage dates for any of the states and the District of Columbia, contact Richard Learn, 154 Kendall Drive, Safety Harbor, FL 34695. You can e-mail him at rlearn@gte.net. Please provide a photocopy of the cover for the records. Out of this we can establish a database that will allow us to track earlier usage dates as they turn up.

Here are the first known uses of perfins in each state

State	Date	Pattern	Catalog #
Alabama	13 Apr 1909	AB/&A	A51
Alaska	3 May 1938	IP/CO	I74
Arizona*	15 Mar 1912	NYL	N113A1
Arkansas*	5 Mar 1920	MP/RR	M211
California	23 Jul 1908	RICO/LD	R87
Colorado*	7 Apr 1909	CTCO	C344
Connecticut	10 Mar 1909	P&F/C	P252
Delaware	6 Oct 1909	PRR/CO	P199
District of Columbia*	31 Jun 1909	NCI	N49
Florida	1 May 1909	FEC/R.Y.	F68
Georgia	9 Feb 1909	SAL	S29
Hawaii*	17 Feb 1938	TH	T47
Idaho*	12 Nov 1917	IDA	I28
Illinois*	26 May 1908	BFC/CO	B110
Indiana	25 Sept 1908	K	K4
Iowa*	3 May 1909	BLA	B152
Kansas	22 Nov 1909	WER/NER	W82
Kentucky*	6 May 1909	SO	S195-31
Louisiana	25 Jun 1909	ML	M152
Maine	6 Apr 1910	NE/T&T	N76
Maryland	14 Sep 1908	BBH	B53
Massachusetts*	22 May 1908	WFS/CO	W91
Michigan*	28 Aug 1908	FORD	F145
Minnesota*	14 Jul 1908	WPC	W158
Mississippi*	19 Jun 1931	IC	I22
Missouri*	3 Jul 1908	SH/CO	S138
Montana	2 Aug 1909	DU/PONT	D129
Nebraska	2 Dec 1908	PRR/CO	P199
Nevada	19 May 1944	UP	U59
New Hampshire	21 Sep 1911	BOE	B176
New Jersey*	27 Jun 1908	K&E/CO	K69
New Mexico	4 May 1911	MS	M227
New York	16 Jul 1908	GB/&M	G47
North Carolina	19 Apr 1909	LT	L148
North Dakota*	1 Jan 1924	ND	N60
Ohio*	12 Aug 1908	BFG/Co	B118
Oklahoma	5 May 1910	RI	R75
Oregon*	27 May 1910	CUD/AHY	C356.1
Pennsylvania	29 Oct 1908	P/Co	P50
Rhode Island*	3 Aug 1909	BY/CO	B250
South Carolina	4 Jan 1912	[TRT]	T87
South Dakota	21 Mar 1916	IHC	I43.7A-1
Tennessee	21 Apr 1909	L&N/RR	L187
Texas*	22 Mar 1909	SW/TT	S322A
Utah*	5 Aug 1911	BAU/ER	B27
Vermont	13 Jul 1911	RUT/LAND	R138
Virginia	14 Sep 1909	IHC	I43.7A-6
Washington	26 Apr 1909	OR/&N	O69
West Virginia*	28 Dec 1909	IHC	I43.7A-17
Wisconsin	26 Sep 1908	Y&L	Y10
Wyoming*	21 Aug 1947	UPC	U63

*Indicates that the information is confirmed by both a postmark and a corner card