
Perfins in the Parcel Post Issues

Pat Callis (#2383)

Developed to prepay the 4th class rate for parcels, the Parcel Post stamps issued in 1913 became (on January 1, 1913) the only stamps legally usable to frank parcel posted packages. Within 6 months of this ruling the Postmaster General, with the approval of the Interstate Commerce Commission, permitted the use of these stamps on commercial mail and the use of regular postage stamps on parcels mailed parcel post.

Twelve Parcel Post stamps were issued and available on January 1, 1913 (many possibly earlier). All are known perfinned. These beautifully engraved carmine rose stamps form an attractive specialty collection of perfinned stamps.

Below you will find a the results of an ongoing survey of the twelve Parcel Post issues with a listing of the perfin patterns known to be in them. For the purposes of totaling (using EXCEL), a '1' represents that the pattern (left of the column) is known in the denomination (at the top of the column). If the cell at the intersection of a value column and a pattern row is empty, no copy of that value/pattern combination has been seen. The matrix includes 12 columns for the 12 parcel post issues plus a total column which represents the total issues in which a given pattern occurs.

Due to cataloging changes over time, some patterns are known under different numbers depending on which version of the US catalog you are using. Numbers presented in the table without parentheses are taken from the Randall (current) version while those in parentheses below the Randall number are from the previous (Balough & Balough) version of the catalog.

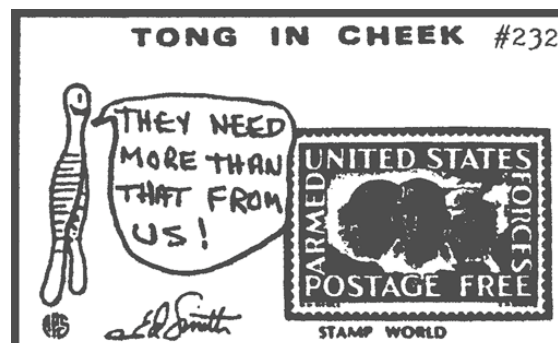
While the basis for this listing is previously published versions of this list, several minor confusions have crept in due to misclassified patterns being reported. The following patterns reported in previous parcel post lists have been deleted and are listed with their correct pattern number (in parentheses the 'was' means 'the accurate identification was'): A171 (pattern was A171A), F69 (was F68.5), G72-29 (was G72-29A),

G110 (was G110A), H194 (was H194A), H218 (was H218.3), M101 (was M101A), N113Dd-6 (was N113Dd-6A), O74 (was O74.5), R121 (was R121A), T101 (was T101A; note: T101A has varieties that match T101A better than T101), and W146 (was W146.3).

Totaling the number of known patterns (1345) by issue (12) gives a grand total of 3551 issue x pattern known collectable varieties. Should you prefer to collect only a single issue, the patterns known by issue break out as follows: Q1 - 420; Q2 - 672; Q3 - 210; Q4 - 472; Q5 - 482; Q6 - 491; Q7 - 198; Q8 - 179; Q9 - 259; Q10 - 99; Q11 - 28; and, Q12 - 41. Only 2 patterns are known on all 12 issues: G72-1 and G72.29A. Three are known on 11 issues: W72.1, W72.4 and W80. And only 7 issues are known on 10 denominations: B215, H172, I91.1, M132, N54A, T42 and YY11.

Editor's Note: With the exception of the data have cobbled together this introductory note. However, except for the formatting to make it fit, Pat is to be thanked for all of the data presented below. Pat has also offered an electronic copy of the Excel spreadsheet, which includes a second sheet which is a checklist sheet able to be transferred (we believe) to your PDA for ease of transport to stamp shows. The full listing (as will be noted at the center bottom of each sheet) runs sixteen , two-column sheets. I will work through them on a space available basis over the next few months.

One final note from Pat: a big thanks to all members past and present who contributed to this updated listing.



US Perfin Cat. #	Scott Cat. #												T o t.		
	Q 1	Q 2	Q 3	Q 4	Q 5	Q 6	Q 7	Q 8	Q 9	Q 10	Q 11	Q 12			
A-10	1	1		1				1							4
A-37				1											1
A-45		1			1	1	1								4
A-47		1				1									2
A-47.5 (A46.5)		1		1	1	1									4
A-56.5 (C12)		1				1									2
A-60	1			1									1		3
A-61					1										1
A-62					1										1
A-63										1					1
A-64					1	1	1		1	1					5
A-68					1										1
A-72		1													1
A-75		1	1												2
A-76						1									1
A-78						1	1								2
A-87						1									1
A-87.2 (C24)	1	1		1	1	1		1			1				7
A-87.4 (C248)								1							1
A-88		1		1	1	1									4
A-94				1	1				1						3
A-95	1					1									2
A-96						1									1
A-102.1 (A102A)		1					1								2
A-115	1	1		1											3
A-116.5 (A116A)		1		1											2
A-117	1	1			1	1									4
A-138	1	1	1	1	1	1	1	1	1						9
A-141								1							1
A-143		1	1	1	1				1						5
A-158				1	1										2
A-167	1														1
A-168				1											1
A-171A		1		1	1		1								4
A-182	1			1	1				1						4
A-184			1				1			1					3
A-197								1							1
A-207A							1								1
A-218		1			1		1								3
A-221-1A	1	1	1	1	1		1	1							7
A-221-3						1									1
A-221-21						1									1

US Perfin Cat. #	Scott Cat. #												T o t.		
	Q 1	Q 2	Q 3	Q 4	Q 5	Q 6	Q 7	Q 8	Q 9	Q 10	Q 11	Q 12			
A-221-23										1					1
A-221-26		1		1		1									3
A-221-33				1											1
A-221-41		1		1											2
A-221-44										1					1
A-224	1														1
A-234	1														1
A-236										1					1
A-244		1		1	1				1	1					5
A-248	1	1			1	1					1				5
A-257		1													1
A-258		1													1
A-259								1			1				2
A-261									1						1
A-262	1	1	1	1	1	1									5
A-264	1	1	1		1	1					1				6
A-266									1						1
A-267A										1		1			2
A-268										1	1		1		3
A-269	1	1		1	1	1	1	1	1	1	1				8
A-270-2	1			1	1										3
A-270-3	1			1		1									3
A-270-5				1	1					1					3
A-270-10		1													1
A-270-14		1		1		1									3
A-270-15	1														1
A-270-16									1						1
A-270-16.5		1										1			2
A-270-19		1				1	1								3
A-271	1														1
A-276	1	1		1	1						1				5
A-278		1													1
A-280						1									1
A-284											1	1			2
A-284.5 (284A)														1	1
A-291	1	1													2
A-306		1									1				2
B-2	1	1		1	1	1	1								6
B-11				1											1
B-12.5		1	1		1										3
B-12.6				1											1
B-12.7		1													1

US Perfin Cat. #	Scott Cat. #												T o t.	
	Q 1	Q 2	Q 3	Q 4	Q 5	Q 6	Q 7	Q 8	Q 9	Q 10	Q 11	Q 12		
B-15	1	1		1	1									4
B-15A (B15.5)		1			1									2
B-17						1								1
B-19	1	1			1									3
B-26			1	1			1							3
B-26.5I					1									1
B-27	1				1	1			1					4
B-29	1	1		1	1	1	1	1	1					8
B-30	1						1							2
B-35			1											1
B-40	1	1		1	1	1		1	1					7
B-42												1		1
B-45				1		1	1							3
B-46		1	1											2
B-48					1									1
B-52										1				1
B-53	1	1	1	1	1	1	1	1	1					9
B-53A (B53.5)					1				1					2
B-56		1												1
B-59	1					1								2
B-60	1	1	1	1										4
B-63		1												1
B-63.5	1	1			1									3
B-66	1													1
B-74					1	1	1	1						4
B-78	1		1		1		1		1					5
B-79					1	1								2
B-82		1												1
B-84							1							1
B-85		1												1
B-86					1	1								2
B-87	1	1		1	1	1		1						6
B-88					1			1						2
B-91		1												1
B-96.5							1							1
B-98						1								1
B-99	1	1		1	1	1								5
B-102						1								1
B-105	1													1
B-106	1		1			1								3
B-106A	1													1
B-107	1	1	1	1	1	1	1	1						8
B-112					1	1								2
B-116-1		1				1								2
B-117									1					1
B-119	1							1						2
B-120	1				1			1	1					4

2 of 16

US Perfin Cat. #	Scott Cat. #												T o t.	
	Q 1	Q 2	Q 3	Q 4	Q 5	Q 6	Q 7	Q 8	Q 9	Q 10	Q 11	Q 12		
B-124					1		1		1					3
B-125											1			1
B-126					1		1							2
B-127	1				1									2
B-131	1				1				1	1	1			5
B-136	1		1		1									3
B-139								1						1
B-145	1				1		1						1	4
B-150		1				1								2
B-156		1												1
B-160		1												1
B-160A		1	1											2
B-165	1	1							1					3
B-165.5				1						1				2
B-166	1		1											2
B-170	1	1												2
B-212	1	1					1	1						4
B-215	1	1	1	1	1	1	1	1	1	1	1			10
B-219	1									1				2
B-224					1	1	1	1	1		1	1		6
B-241	1	1			1	1	1							5
B-242								1						1
B-244												1		1
B-246								1						1
B-249											1			1
B-250								1						1
B-256		1						1						2
B-257		1												1
B-261		1						1						2
B-263						1	1							2
B-270									1		1	1		3
B-272		1												1
B-276		1							1					2
B-277									1					1
B-284		1												1
B-290	1	1						1	1					4
B-293.5		1							1		1			3
C-4	1													1
C-6	1	1				1			1					4
C-8	1		1						1					3
C-9	1	1							1					3
C-18		1												1
C-22		1												1
C-26	1													1
C-27		1						1						2
C-28		1							1		1	1		5
C-30		1	1	1	1	1	1							5

US Perfin Cat. #	Scott Cat. #												T o t.
	Q 1	Q 2	Q 3	Q 4	Q 5	Q 6	Q 7	Q 8	Q 9	Q 10	Q 11	Q 12	
C-32	1	1		1	1	1		1	1		1		8
C-35	1	1	1	1	1	1							6
C-37		1											1
C-43	1				1	1							3
C-45	1												1
C-46	1	1			1								3
C-52		1	1		1	1							4
C-63		1	1										2
C-65		1	1	1	1		1						5
C-71		1			1								2
C-81						1			1				2
C-82				1	1								2
C-83		1											1
C-84	1	1	1	1									4
C-86								1					1
C-86.3 (See G62)													
C-93.5						1							1
C-94								1					1
C-98			1		1					1			3
C-98.5		1											1
C-100					1								1
C-101				1									1
C-102		1	1		1	1	1						5
C-105					1								1
C-105.5						1							1
C-117		1											1
C-133				1									1
C-134		1			1								2
C-135					1			1					2
C-144					1								1
C-145						1							1
C-150		1		1	1	1		1	1				6
C-158		1		1									2
C-163		1				1							2
C-165.5						1							1
C-168		1		1									2
C-177.8 (C364)	1	1				1							3
C-178			1	1	1	1							4
C-179		1		1		1							3
C-182									1				1
C-186								1			1		2
C-197	1				1		1	1					4
C-198			1	1	1		1	1	1	1		1	8
C-203					1	1							2
C-204.3		1											1
C-207	1	1		1	1		1	1					6

3 of 16

US Perfin Cat. #	Scott Cat. #												T o t.
	Q 1	Q 2	Q 3	Q 4	Q 5	Q 6	Q 7	Q 8	Q 9	Q 10	Q 11	Q 12	
C-218					1								1
C-220		1		1									2
C-228					1					1			2
C-231	1			1									2
C-238				1						1		1	3
C-239						1							1
C-246						1							1
C-252	1									1			2
C-252A										1			1
C-254		1		1		1							3
C-258		1											1
C-263	1	1											2
C-264				1	1	1				1		1	5
C-266										1			1
C-267	1	1	1					1	1				5
C-268					1								1
C-270										1			1
C-272		1			1					1			3
C-278										1			1
C-284	1	1	1	1						1			5
C-290	1	1	1	1	1	1	1	1	1	1			9
C-294	1	1			1								3
C-300					1								1
C-316		1											1
C-317		1											1
C-318					1								1
C-324	1	1	1	1	1	1							6
C-327					1								1
C-328						1							1
C-329		1	1	1		1	1	1	1				7
C-347		1											1
C-350		1											1
C-355		1											1
C-356.1		1											1
C-356.7					1								1
C-356.10 (C356H)	1						1		1				3
C-360	1	1	1	1		1				1	1		7
C-361.5								1					1
C-362								1			1		2
C-378	1				1								2
C-381	1												1
C-382		1		1									2
C-385	1	1			1								3
C-386					1								1
C-394	1	1			1	1		1					5
C-401						1							1

US Perfin Cat. #	Scott Cat. #												T o t
	Q 1	Q 2	Q 3	Q 4	Q 5	Q 6	Q 7	Q 8	Q 9	Q 10	Q 11	Q 12	
C-407			1	1	1		1			1		1	6
C-409						1							1
C-416						1	1						2
C-418		1	1	1									3
C-419	1	1				1		1					4
C-421		1											1
C-422	1	1											2
C-425						1							1
C-426					1								1
D-3	1	1	1	1		1	1	1	1				8
D-4	1	1			1	1	1		1				6
D-5					1								1
D-9	1			1	1				1				4
D-13		1											1
D-16		1											1
D-17				1		1							2
D-26			1	1									2
D-35		1											1
D-42			1	1	1				1	1			5
D-50				1									1
D-53						1							1
D-54			1										1
D-55				1		1							2
D-58		1											1
D-62		1		1	1								3
D-63		1		1									2
D-68			1	1		1	1						5
D-81					1				1				2
D-88A (D87.5)	1	1			1								3
D-92						1		1					2
D-94	1	1		1					1				4
D-97							1						1
D-118									1				1
D-119									1				1
D-129	1	1		1	1	1		1	1	1	1		9
D-130		1				1							2
D-136	1	1	1	1	1	1	1						7
D-137				1									1
D-141		1		1									2
D-142				1		1							2
D-143					1								1
D-152	1												1
D-154	1	1	1	1	1	1	1	1	1				9
D-155	1	1			1	1							4
E-4		1				1							2
E-9	1				1								2
E-12		1			1								2

4 of 16

US Perfin Cat. #	Scott Cat. #												T o t
	Q 1	Q 2	Q 3	Q 4	Q 5	Q 6	Q 7	Q 8	Q 9	Q 10	Q 11	Q 12	
E-17		1		1		1							3
E-18	1	1											2
E-23		1	1	1		1							4
E-24	1	1		1	1	1		1	1				7
E-42		1	1	1	1	1							5
E-47		1			1								2
E-47A		1	1	1	1					1	1		6
E-48	1	1		1	1	1	1	1	1	1			8
E-50	1	1		1		1	1		1				6
E-54											1		1
E-56		1											1
E-57	1	1		1	1	1	1	1	1		1		9
E-58	1	1					1	1	1		1		6
E-59					1	1	1	1	1		1		6
E-61	1									1			2
E-67	1												1
E-71	1	1		1	1	1	1						6
E-73				1			1						2
E-75					1								1
E-77	1								1				2
E-79	1	1								1			3
E-82		1											1
E-83	1												1
E-96	1	1			1	1				1			5
E-96A		1				1							2
E-98		1											1
E-101A (E101.5)									1				1
E-111	1	1					1						3
E-113	1	1		1		1				1			5
E-117		1		1	1								3
E-122		1						1	1	1			4
E-131					1								1
E-134					1								1
E-136		1		1	1								3
E-140						1	1						2
F-1									1				1
F-2	1							1	1	1			4
F-4	1	1	1	1		1				1			6
F-7					1	1							2
F-8	1	1		1	1	1	1	1	1		1	1	9
F-10		1				1							2
F-11						1							1
F-12					1		1				1		3
F-19		1											1
F-23	1												1
F-25		1										1	2
F-30	1	1							1	1			4

US Perfin Cat. #	Scott Cat. #												T o t.
	Q 1	Q 2	Q 3	Q 4	Q 5	Q 6	Q 7	Q 8	Q 9	Q 10	Q 11	Q 12	
F-32.5	1	1				1			1				4
F-41		1											1
F-42		1			1								2
F42.5		1											1
F-43		1											1
F-45	1	1			1	1	1		1				6
F-56						1							1
F-60		1											1
F-61		1											1
F-68.5				1					1				2
F-70	1	1				1							3
F-71	1	1	1	1	1	1			1				7
F-72	1	1											2
F-73						1							1
F-82			1										1
F-90		1		1		1			1				4
F-96						1							1
F-99	1	1		1	1								4
F-102		1											1
F-103	1	1		1	1			1	1				6
F-106		1			1								2
F-106.5		1		1									2
F-108	1												1
F-112		1											1
F-114.5						1							1
F-127		1							1				2
F-136							1	1					2
F-138	1	1		1	1	1			1	1			7
F-142	1		1				1						3
F-145	1	1		1	1	1			1	1			7
F-147	1												1
F-150	1	1			1	1							4
F-166	1												1
F-167	1										1		2
F-186		1		1	1	1	1			1			6
F-188	1								1				2
F-193					1								1
F-197										1			1
F-199	1												1
F-206					1				1				2
F-207	1	1		1		1	1						5
F-212	1		1	1	1				1				5
F-220		1				1							2
F-221		1				1							2
F-223			1										1
F-227			1	1	1								3

5 of 16

US Perfin Cat. #	Scott Cat. #												T o t.	
	Q 1	Q 2	Q 3	Q 4	Q 5	Q 6	Q 7	Q 8	Q 9	Q 10	Q 11	Q 12		
G-8		1	1			1	1						1	5
G-9	1								1		1			3
G-19	1	1			1	1			1					5
G-32		1			1	1	1	1						5
G-35		1	1			1	1							4
G-36	1	1							1					3
G-37.5		1			1									2
G-40					1									1
G-49	1	1	1	1			1	1			1	1		8
G-49A		1	1	1	1	1	1	1	1	1	1	1		9
G-54							1							1
G-57		1												1
G-61	1	1			1	1	1			1				6
G-62 (C86.3)	1	1	1	1	1	1	1							6
G-65											1			1
G-67	1	1			1	1	1	1						6
G-72-1	1	1	1	1	1	1	1	1	1	1	1	1	1	12
G-72-2					1	1					1	1		4
G-72-2B (G72-1.5)	1				1	1	1				1			5
G-72-2C (G72-1.5A)					1	1					1			3
G-72-5								1			1			2
G-72-7		1			1			1		1	1			5
G-72-8								1						1
G-72-9						1	1	1	1			1		5
G-72-10	1	1			1	1			1	1		1	1	8
G-72-14		1				1	1							3
G-72-15					1							1		2
G-72-16											1			1
G-72-17												1		1
G-72-18		1				1	1							3
G-72-20												1		1
G-72-21	1	1			1			1			1			5
G-72-23								1						1
G-72-26	1								1				1	3
G-72-29A	1	1	1	1	1	1	1	1	1	1	1	1	1	12
G-72-32	1	1			1	1	1	1	1	1	1			8
G-72-34						1								1
G-72-36	1	1			1	1	1	1	1	1	1			8
G-72-39					1	1	1							3
G-72-44						1	1							2
G-72-48							1							1
G-73		1												1
G-76	1	1	1			1	1							5
G-81										1				1
G-91				1	1	1			1	1				5
G-101	1	1												2

US Perfin Cat. #	Scott Cat. #												T o t
	Q 1	Q 2	Q 3	Q 4	Q 5	Q 6	Q 7	Q 8	Q 9	Q 10	Q 11	Q 12	
G-103	1	1	1	1								1	5
G-110A				1	1								2
G-111					1								1
G-113			1										1
G-141		1											1
G-150			1	1	1								3
G-151	1	1											2
G-158	1												1
G-160		1		1	1	1							4
G-172A (G171.5)	1		1	1	1				1	1	1		7
G-179		1		1									2
G-182	1		1	1		1							4
G-188		1		1									2
G-190				1	1								2
G-191	1				1								2
G-194		1		1									2
G-195					1			1					2
G-197	1												1
G-202		1		1									2
G-211		1	1		1	1		1					5
G-212		1			1	1							3
H-8	1			1	1	1	1		1				6
H-10	1	1	1	1	1	1							6
H-11				1									1
H-18				1									1
H-20		1						1					2
H-21		1			1	1		1					4
H-22					1								1
H-27			1		1								2
H-28		1	1	1	1								4
H-30	1		1	1	1	1		1					6
H-31		1											1
H-32	1	1	1	1		1							5
H-33						1							1
H-35	1	1		1	1	1	1	1	1				8
H-36									1				1
H-42		1			1	1							3
H-52								1					1
H-54	1	1		1	1	1	1	1	1	1			9
H-55						1							1
H-65		1	1										2
H-69		1											1
H-73				1		1							2
H-73.5					1								1
H-75	1	1		1	1	1							5
H-77	1												1
H-78	1				1	1		1					4

6 of 16

US Perfin Cat. #	Scott Cat. #												T o t
	Q 1	Q 2	Q 3	Q 4	Q 5	Q 6	Q 7	Q 8	Q 9	Q 10	Q 11	Q 12	
H-83	1	1		1	1	1	1						6
H-91		1	1	1	1	1			1				6
H-92		1											1
H-93				1									1
H-96.5				1									1
H-97		1		1		1							3
H-105		1											1
H-115		1		1	1								3
H-121					1								1
H-127				1	1	1				1			4
H-128					1								1
H-138			1										1
H-142	1				1								2
H-145						1							1
H-149		1											1
H-153	1			1		1			1				4
H-161		1											1
H-164	1												1
H-1711		1						1					2
H-172	1	1	1	1	1	1	1	1	1	1	1		10
H-174	1	1	1	1	1	1				1			6
H-178				1									1
H-182		1											1
H-183				1	1	1							3
H-184					1								1
H-194A		1		1	1	1			1				5
H-205		1											1
H-207	1	1	1		1	1		1	1	1	1		8
H-209			1										1
H-211	1	1											2
H-212	1	1	1	1	1	1	1						7
H-213						1							1
H-216						1							1
H-217		1											1
H-218.3		1											1
H-222	1	1											2
H-229		1			1			1	1				4
I-6	1												1
I-9		1						1		1			3
I-18								1					1
I-21						1							1
I-29			1										1
I-29.5	1	1	1	1	1	1	1		1	1		1	9
I-31		1											1
I-33		1		1									2
I-41	1	1	1		1	1			1				6
I-43.7-2 (C152.2)					1								1