

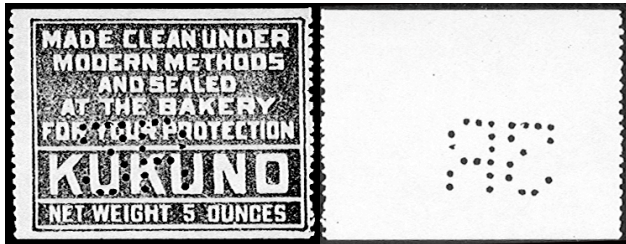
NON-POSTAL, NON-REVENUE PERFINs

Jacj Brandt ((LM#14)

We have had a couple notes on yeast label perfin. This got me thinking about other types of labels with perfin. A recent acquisition prompted me to check through my collection, and present some of what I found.

Chuck Spaulding had intended to list the yeast labels in the US Revenue-Perfin catalog, and was still thinking about a few others. Hopefully the new Revenue Catalog Chairman will list them, since they should be listed somewhere

Here are a few items in no specific order.



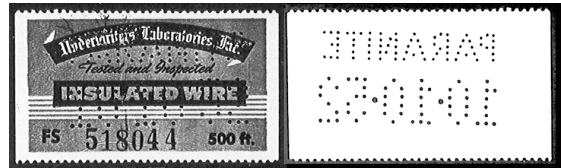
Pattern '3R' - gray, KUKUNO, some kind of bakery label, too light for a loaf of bread.



Pattern 'DV/CO.' - black with value in red, Chain Deliveries Express Inc label (fairly common without the perfin). Note that this is postal perfin DI35



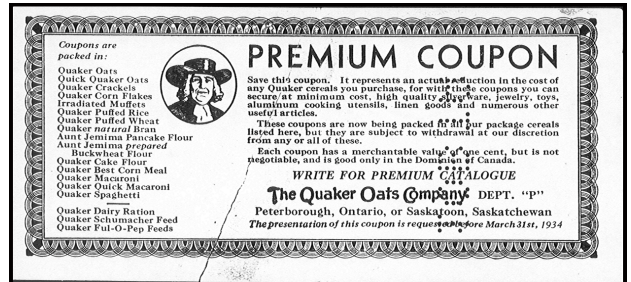
Pattern 'JS/BCo' - black and brown National Association of Commerce and Labor seal. This is postal perfin J140



Pattern 'PARANITE/10•10•52' - red and black Underwriters Laboratories, Inc. seal of inspection (this one for insulated wire).



Pattern "97" - red and black (have punched from front and back) Koppers Coke seal.



Pattern '10BTA' and '12BHN' black, The Quaker Oats Company premium coupons (save enough and get a prize) dated 1933 and 1934. I picked these up at an Antique Collectors Mall -they are very fragile, but I am not waiting for a perfect copy to come along. As with many things Canadian they are English on one side and French on the other.

I also have a few oddballs from other countries. In some cases I am not sure if the foreign ones are revenues or not. Who knows more about these