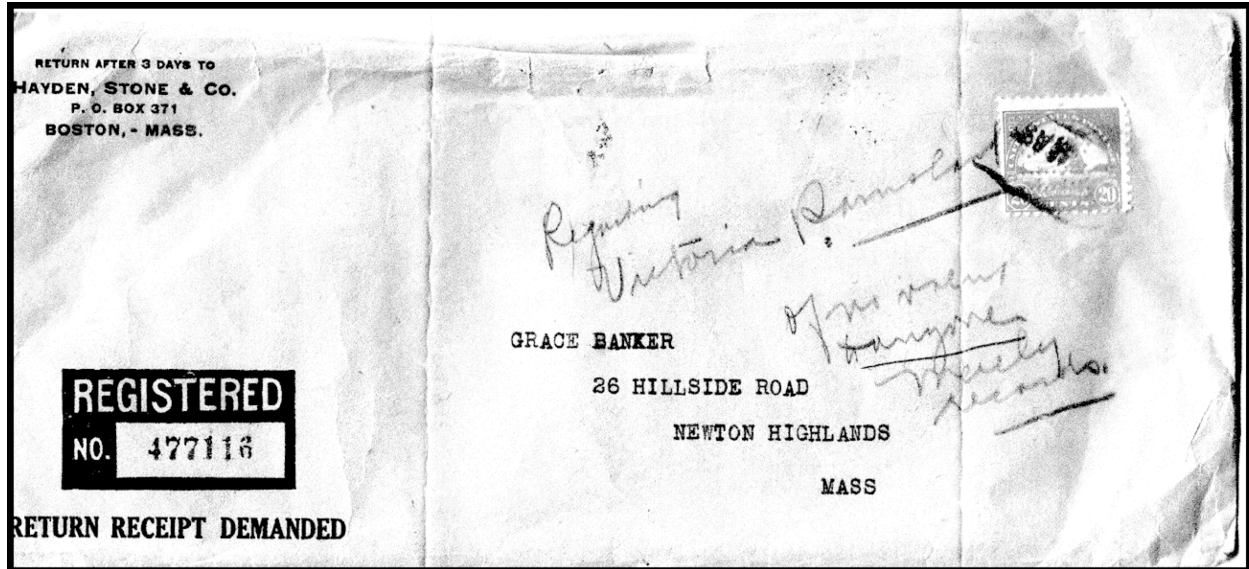
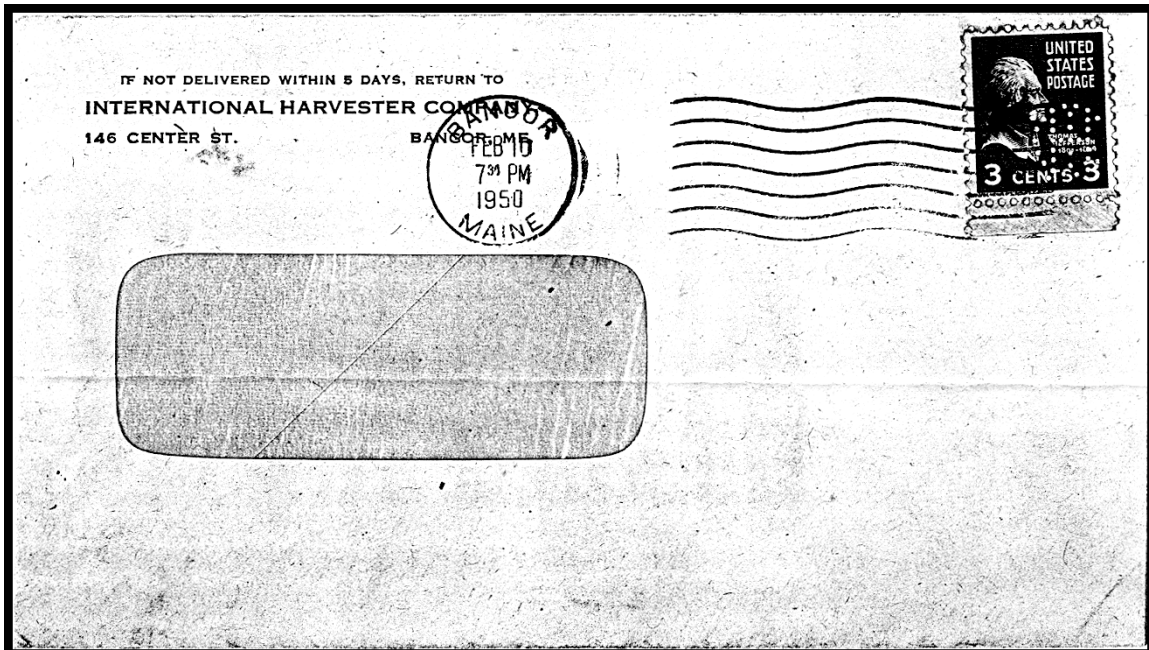

Covers Tell Interesting Stories

Vince McDermott (#17887)

The first three covers shown have a Maine connection. The last is just interesting. Here is a use of the Hayden, Stone & Co. perfin (H177) by a corporate office not previously listed in the catalog – Boston, MA.

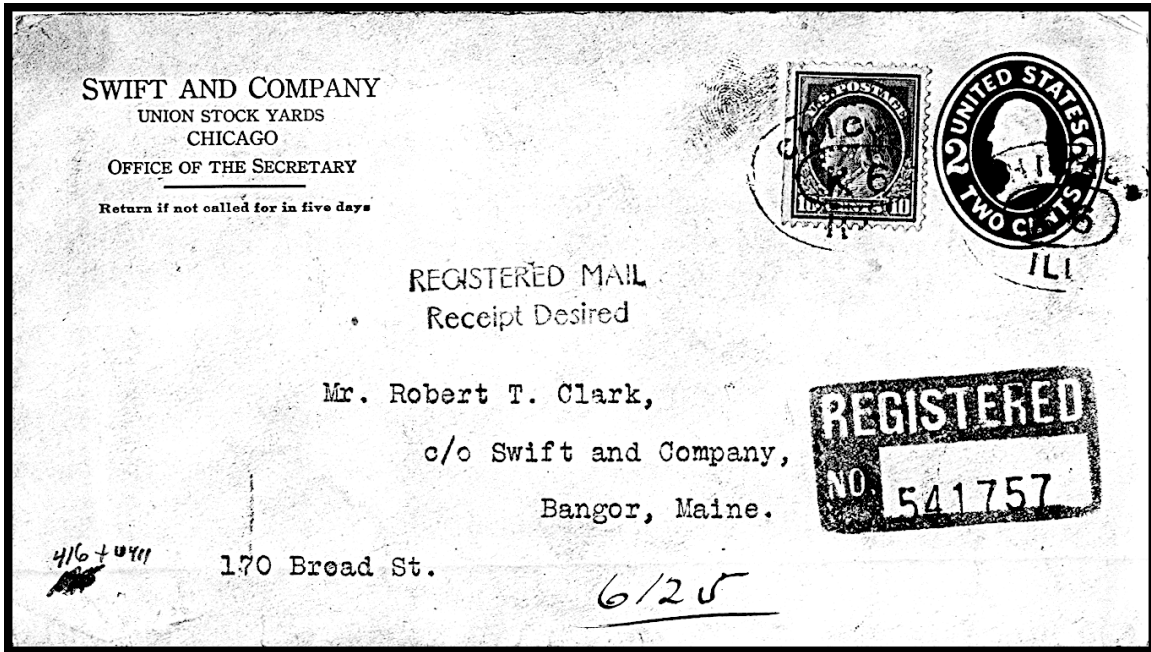


Here is pattern I43.7-23, previously reported by the International Harvester Company in Boston, MA, Providence, RI, and Somerville, ME. This cover from IHC offices at 123 Center Street, Bangor, ME and canceled in Bangor represents a new office listing for this pattern.

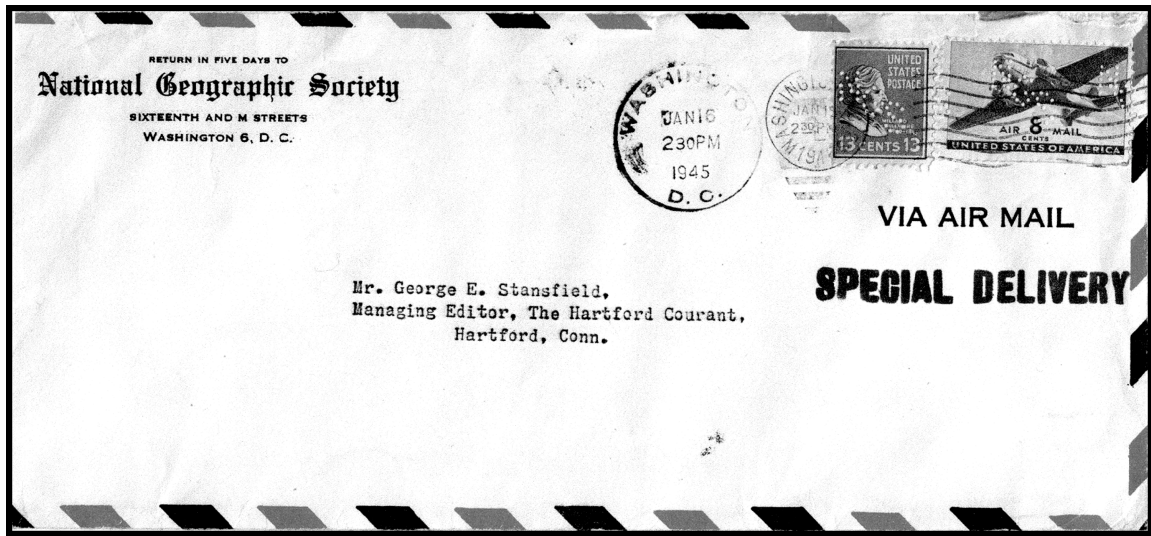


This (top of next page) is a normal usage of the Swift & Co., perfin on a letter from the (listed) Chicago offices. However, of interest to me is the fact that it was mailed to a Company office in Bangor, ME. This raises my hopes

that somewhere out there (in Chicago??) there might be a perfin used from the Bangor office. Anyone know of such an item?



And, finally, here is an interesting cover employing the National Geographic Society's perfin (N65). The two stamps show different broken pin varieties of the pattern. The 13¢ Fillmore stamp shows the broken pin variety (in the 'G') used as an illustration in the Ballough's US Catalog, the 8¢ airmail has a broken pin in the 'S'. The locations of these broken pins suggest, at the least, a multiple die head on the perforator. Backstamp on this cover tells its own interesting tale of rapid service; mailed January 16, 1945 at 2:30 P.M. in Washington this letter was receipt stamped in Hartford, CT at 6:30 A.M. on the 17th.



Parcel Post Census – Part 4 →