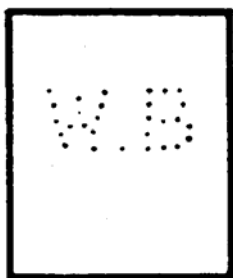


DIE VARIATIONS

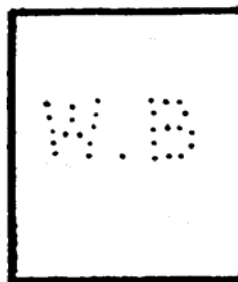
In our last issue Reg Powell brought up the subject of dies which differed slightly from each other. Different members will view this in different ways, but studies of these small variations can usefully lead to the identification of different users of the same lettering, or to one user with two machines. The issue is confused by multi-die machines with slight variations between the dies. We are very happy to publish details of this type of research, so members can share their results and increase the basis of the search for variations and limits for usage. Postmark place and date and stamp are always useful in this type of research, so please report them.

Below is a selection of items supplied by Harry Skinner and we would be pleased to publish any further selections supplied by members.

Cat. No. W 42.6

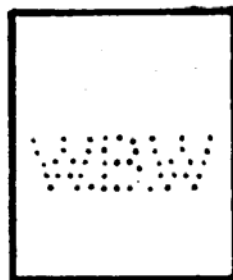


On EāVII to GVI

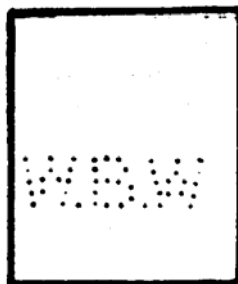


On EāVII to GV

Cat. No. W 81



On QV ld lilac and
Jubilees



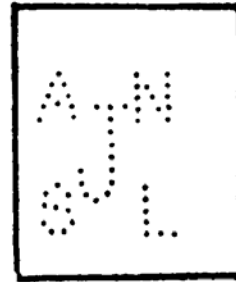
On QV ld lilac

Cat. No. W 134.1A

Cat. No. A 422.1

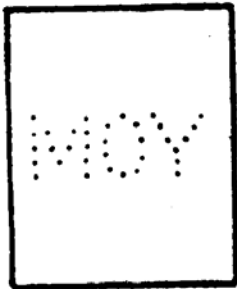


On QV 1a lilac to
GV (1911/12)



On QV 2d Plates and
1d lilac

Cat. No. M 434

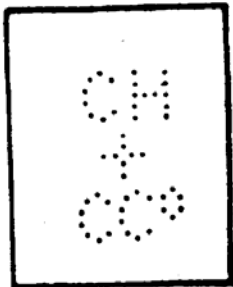


On QV 1a lilac to
GV (Photo)

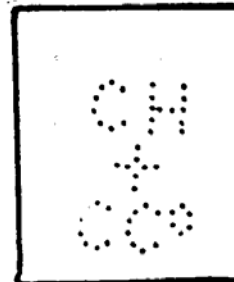


On QV 1d lilac

Cat. No. C 316

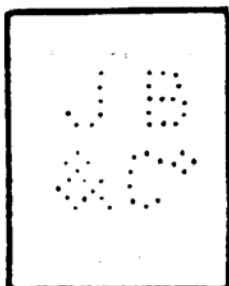


On QV 1880/81 to
Jubilees

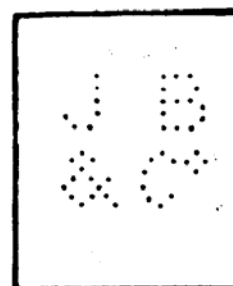


On QV 1d lilac and
Jubilees

Cat. No. J 64.2



On EdVII



On QV Jubilees