

In the book "G.B. Official Perfins" by T.A.Edwards & B.C.Lucas there is a section dealing with fiscal perfins.

In Addendum 2 The Chancery of Lancaster was shown to use two of these dies. Fig.1 - PB/CofL/B - for Preston District, Chancery of Lancaster, Blackburn. Fig.2 - L/CofL/D - for Liverpool District - Chancery of Lancaster.

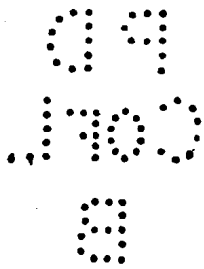


Fig.1.

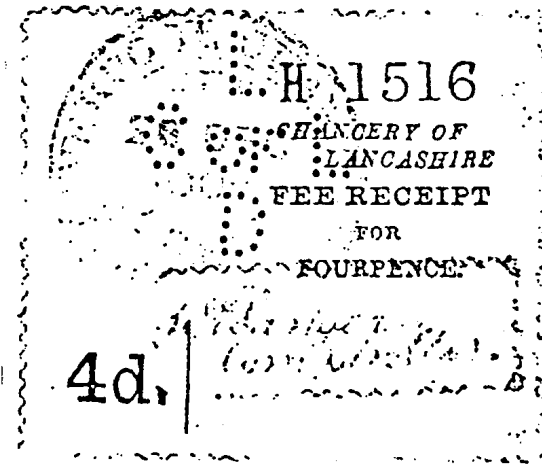


Fig.2.

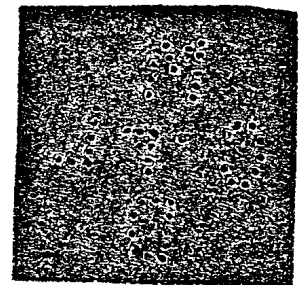
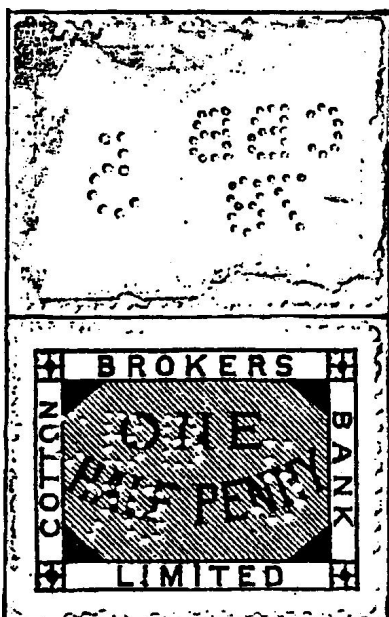


Fig.3.

I have just acquired a full receipt for the Manchester District, Chancery of the County Palatine of Lancaster. The die is not complete - missing holes in the 'OF' - Fig.3 - and rather difficult to illustrate as the die goes through the Fee Receipt stamp and the document. The full die would be M/CofL/D. The whole document is illustrated on the next page.

* * * *

LIVERPOOL COTTON ASSOCIATION



In Bulletin 245 (Ap'90) Pg.5, was mention of the 'CH' perfin found on the Liverpool Cotton Brokers Association Clearing House revenue stamps.

Some while ago JOHN MARRINER wrote asking me about similar revenue stamps which he had.

This was for the 'COTTON BROKERS BANK LIMITED' and has the perfin CBB/78 with a large 5 at the side. The '78' will be for 1878 but I would only be guessing at the meaning of the 5.

294

1909

Letter N

No. 29

In the Chancery of the County

Palatine of Lancaster

Manchester District

Novell v Park Hydro

By Virtue of an Order made in this action bearing date the 11th day of May 1910 the Solicitor for the Leek & Moorland Building Society

has this day left at the Chancery Office, Duchy Chambers, 4, Clarence Street, Manchester,

A Bill of Costs for taxation.

Dated this 14th day of July 1910

Hubert Winstanley

Registrar

