

# Dillonvale, Ohio - Population 900

Bob Szymanski (LM#145)

Dillonvale is a sleepy coal mining town in southeastern Ohio on the Ohio River across from West Virginia. So how do you write a perfin article about such a town.

Well, first of all, in all my years of collecting perfins I have seen and obtained only four perfin covers showing a Dillonvale cancel. Two perfins are from the New York Central System (Figures 1 & 2) and two are from The Wheeling and Lake Erie Railway

Co. (Figures 3 & 4). Figure 4 is a return reply envelope to the Massachusetts Protective Association, Inc - an insurance company. Railroad perfin covers, whether the envelopes are official railroad business or stamps that may have been sold to rail passengers, can be found from almost every town that has railroad tracks in or near that town. If you only keep your eyes open, you may find a connection with many different places across our country or throughout the world.



Figure 1  
New York Central System Cover - Dillonvale, Ohio Postmark "Jan 25 1941" - Perfin N182  
(Strip electronically cropped from cover and shortened)

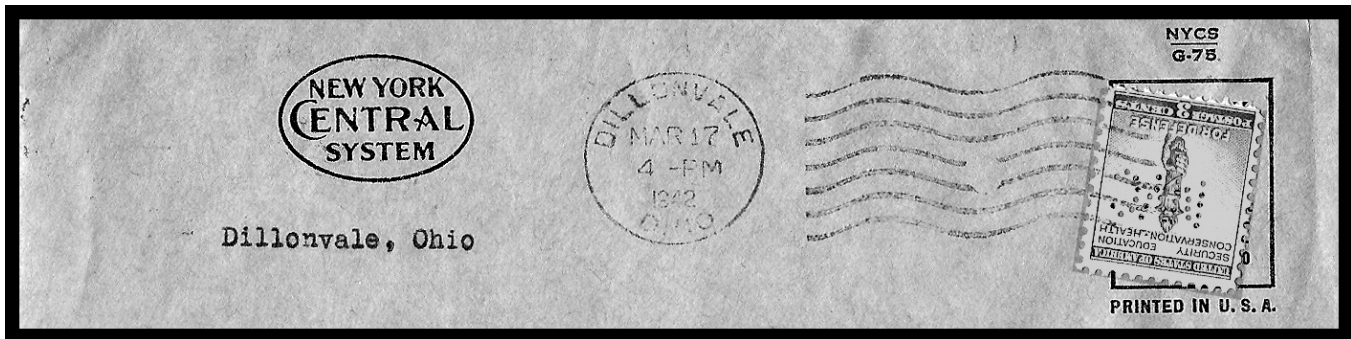


Figure 2  
New York Central System Cover - Dillonvale, Ohio Postmark "Mar 17 1942" - Perfin N182  
(Strip electronically cropped from cover and shortened)

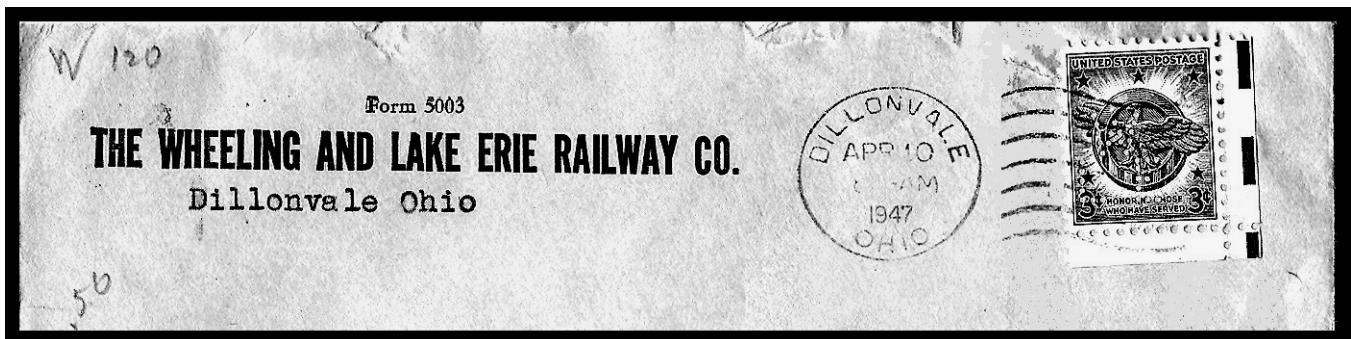


Figure 3  
The Wheeling and Lake Erie Railway Co. Cover - Dillonvale, Ohio Postmark "Apr 10 1947" - Perfin W 120  
(Strip electronically cropped from cover and shortened)

---

## Dillonvale, Ohio - Population 900 (cont.)

Why Dillonvale, Ohio? There are two reasons very close to my heart - my paternal grandfather and my nephew. Tragically, my grandfather Frank Szymanski died in his mid-thirties buried in an open pit mine collapse at the start of WWI, leaving my dad and six siblings orphans. Upon receiving a small settlement from the coal company my grandmother quickly moved the family to Cleveland, Ohio. This is where I was born and raised and where most of my surviving relatives live.

This makes my grandfather my nephew Dennis Szymanski's great grandfather. Dennis was the only youngster I ever encountered who wanted to know everything about coins and stamps. We bonded quite early and Dennis was in business selling stamps as a young teenager. One day he asked his

mother to take him to the library which sort of shocked her because he did not frequent the library, but he insisted and she obliged. Upon coming out she wondered why Dennis did not have any borrowed books. His answer was that he met a stamp collector who wanted a stamp that he had and he made a quick \$20.00! "Don't worry mom, I'll get you a couple of bucks for gas and your time!" was Dennis' reply.

Dennis was one of our Perfin Club's newest members when he suddenly passed away this past October from cancer. He was 50. The last ten years of his life were spend buying and selling postcards. Yes, I'll miss my best perfin postcard provider but I will very, very much more miss a nice fellow who I am proud to call my nephew.

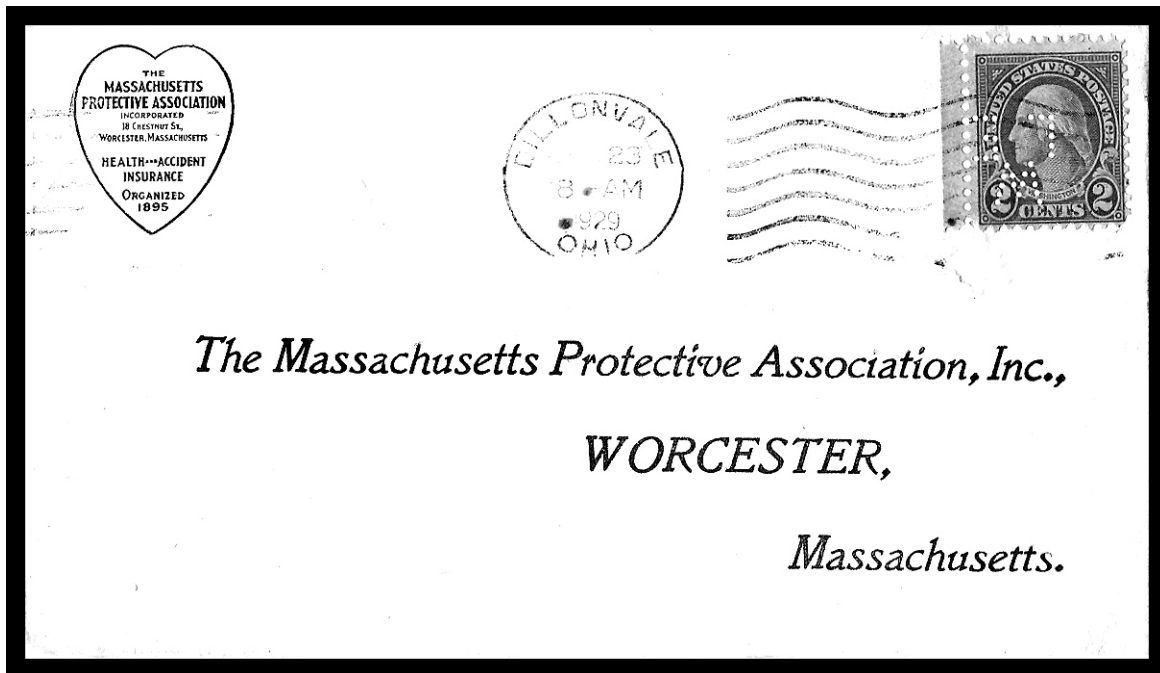


Figure 4

The Massachusetts Protective Association, Inc. Return Reply Cover  
Dillonvale, Ohio Postmark "23 1929" - The Wheeling and Lake Erie Railway Co. Perfin W120

---