

Hawaii Revisited – Again

Bob Schwerdt (#505L)

The most comprehensive *Bulletin* article that I could find about the T. H. perfin of Hawaii (T47) was in the Feb. 1975 issue. It was a reprint of the E. M. Pickop article (May 1961 *Bulletin*) and a listing of the issues in which it was known by Dorothy Savage. The total known issues perfined with T47 was then 118. According to Pickop, the total number of possible issues from 1931 through 1954 is 232. An update to the list with usage from 1926 through 1958 should reveal more issues. On Dorothy's list there are 20 airmails and 1 special delivery stamp.

All of my T. H. copies, save one, are off cover, so it is impossible to determine which territorial offices used the perfin. No doubt, some stamps were used unofficially. Records show that the perfined stamps were used even after Hawaii became a state.

I am always fascinated by postmarks. There has been no attempt to list any town cancels in any of the *Bulletin* articles. Honolulu is the most common cancel that I have found. In addition, a Feb. 1985



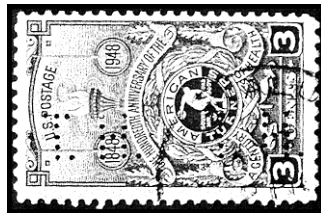
'HONOLULU'



'...OHE'



'...AWA'



'...ALU...'

Bulletin article illustrates a card used by a HAM operator in Lihue (Kauai).

There are a few town names which are clearly not Hawaiian to be found in my atlas: Pearl Harbor, Kurtistown, Volcano, Captain Cook... Hawaiian names make abundant use of the vowels a, o, and u. Therefore, it is often difficult to determine the full name of a Hawaiian town when only a few letters are visible in the postmark.



'...WAH...'



'KEALAKE...'

I can list the postmarks I have for certain: Honolulu (Oahu), and Kamuela, Hilo, and Kaelakeua (Hawaii), Three partials may be from Kaneohe, Wahawa, and Waianae (Oahu).



'KAMUELA'

The covers in the 1975 *Bulletin* article, all postmarked Honolulu, show use by the Board of Commissioners of Agriculture and Forestry, Board of Health, and the Office of the Attorney General.

Collectors with more extensive collections of the Hawaii perfin should be able to contribute more town postmarks and additional users name.