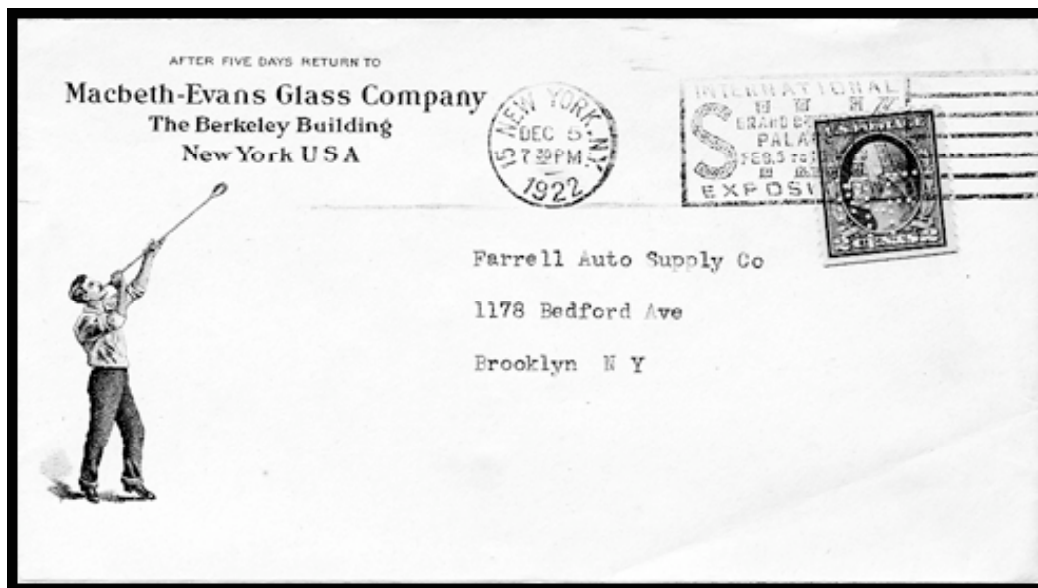

More covers from Doug (M - P)

Doug Turner (#2549)

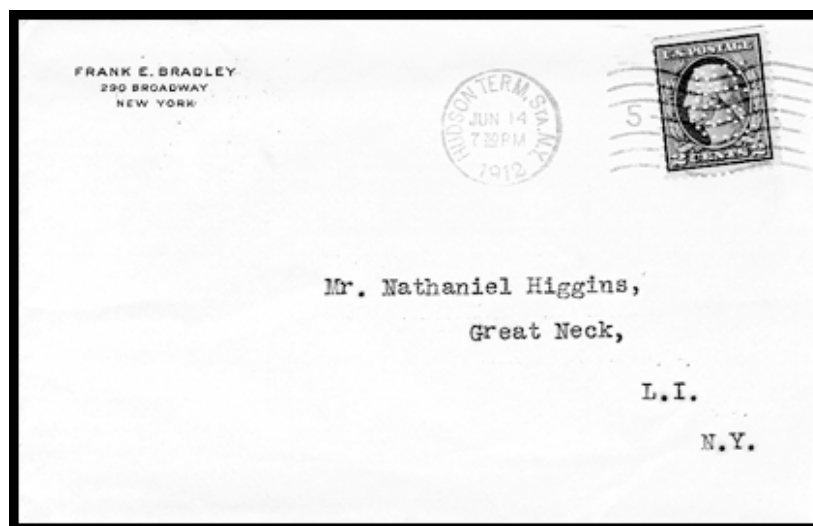
[Ed. Note: An apology – M99 was to be the last cover in the previous installment (p. 50 April 2006 *Bulletin*). Unfortunately I illustrated it with the picture of M238 which was to begin this installment. Sorry Doug! Here is M99 with the correct illustration.]



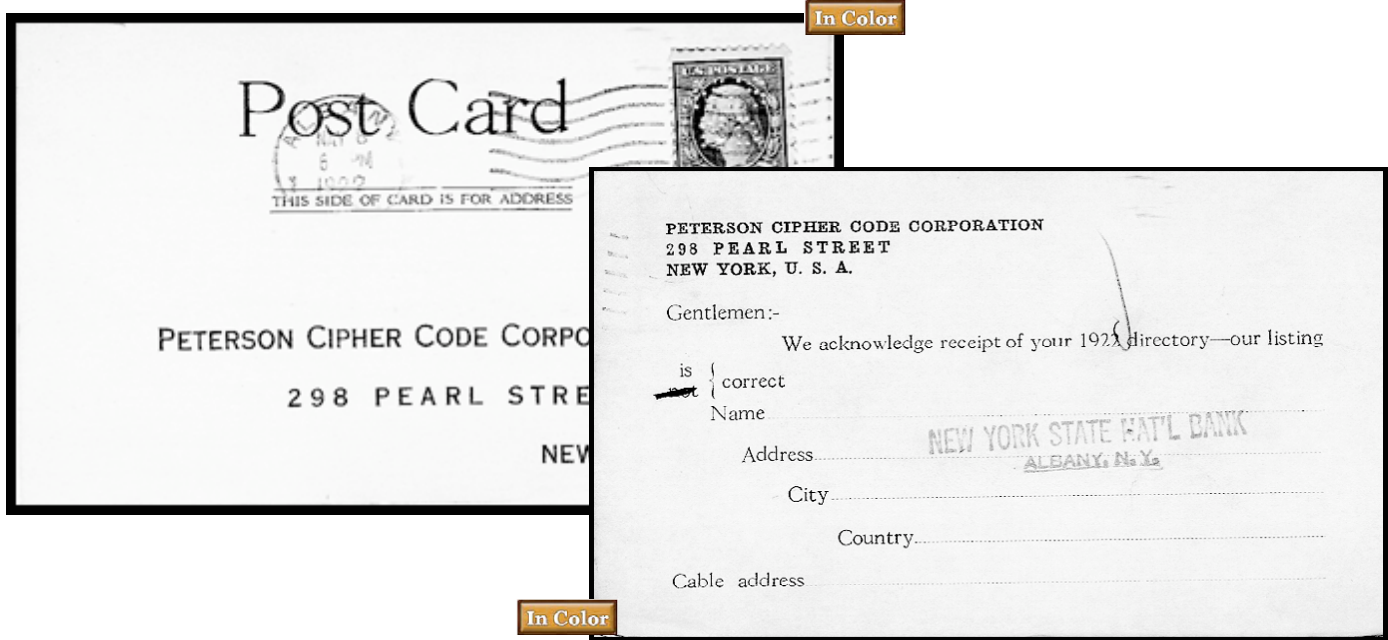
M-99 -- The catalog does not show this listing as verified (*). This cover verifies the information in the catalog.

M-238 -- Additional user: Detroit Boat Co.

See page 50 of the April 2006 *Bulletin* (last illustration in article – listed there [incorrectly] as M99)



N-187 -- The catalog does not list a user. This cover postmarked in 1912 lists the user as Frank E. Bradley, 290 Broadway, New York. Some research is needed to determine who Frank E. Bradley was and where he worked.



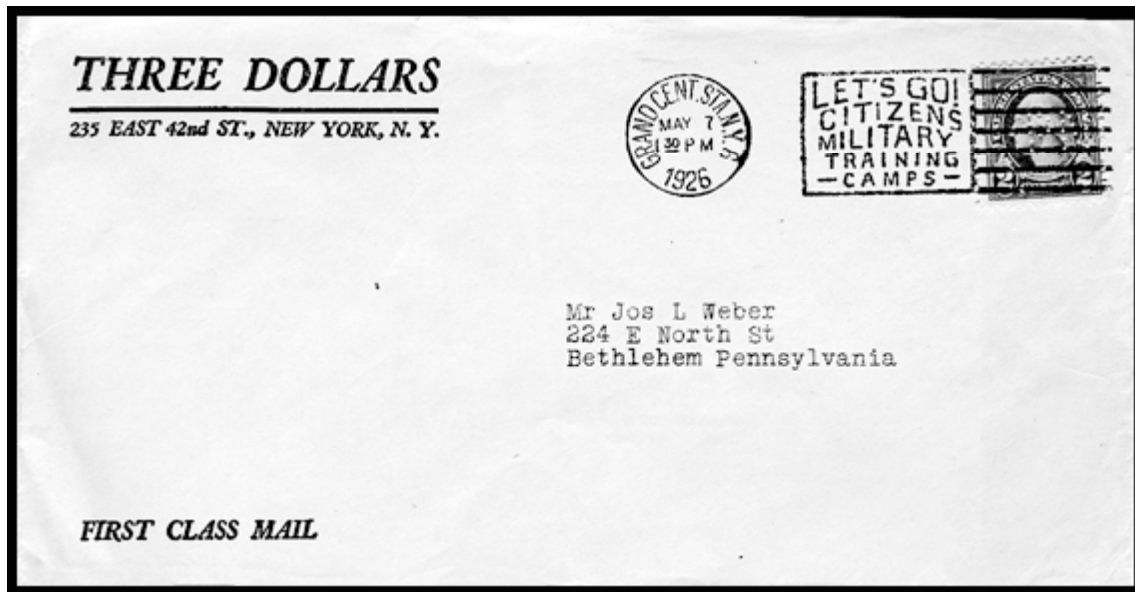
N-201 -- The catalog does not show this listing as verified (*). This verifies the information in the catalog.



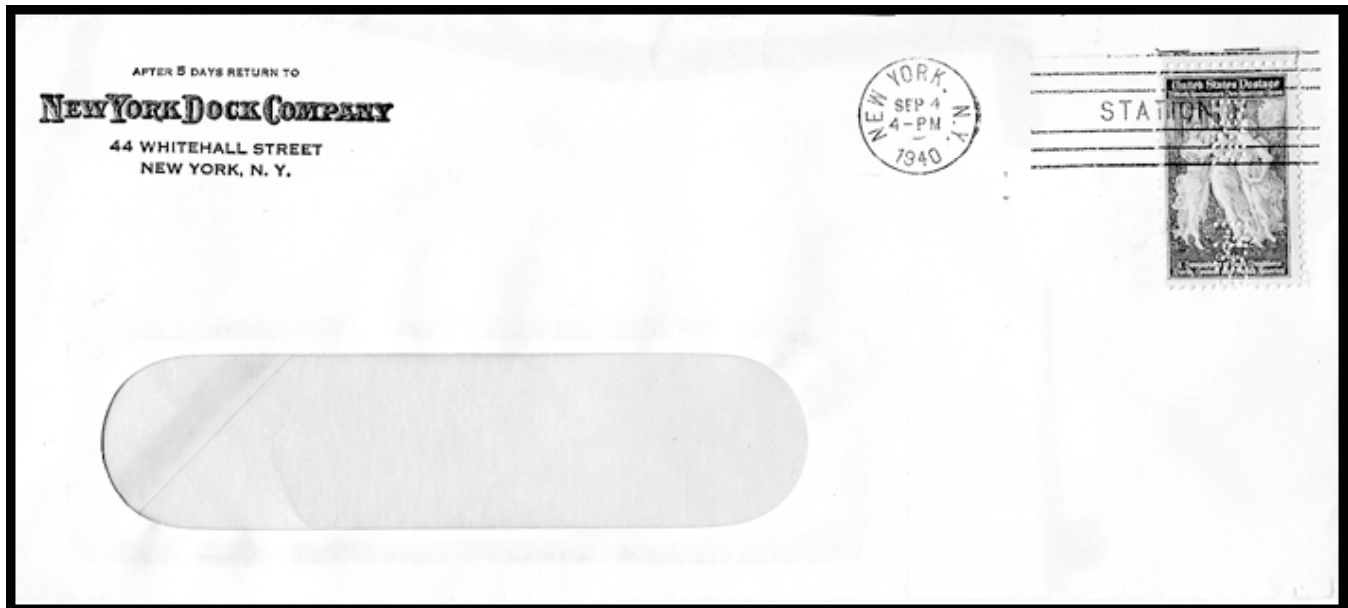
O-50 -- The catalog does not show this listing as verified (*). This verifies the information in the catalog.



O-71 -- The catalog does not show this listing as verified (*). This verifies the information in the catalog.



P-147 -- This cover verifies the user as Three Dollars. This may have been the name of a store in New York. Maybe a member in New York can check this out.



P-196 -- This is a possible additional user. I don't know if the New York Dock Company was part of The Pennsylvania Railroad Company.