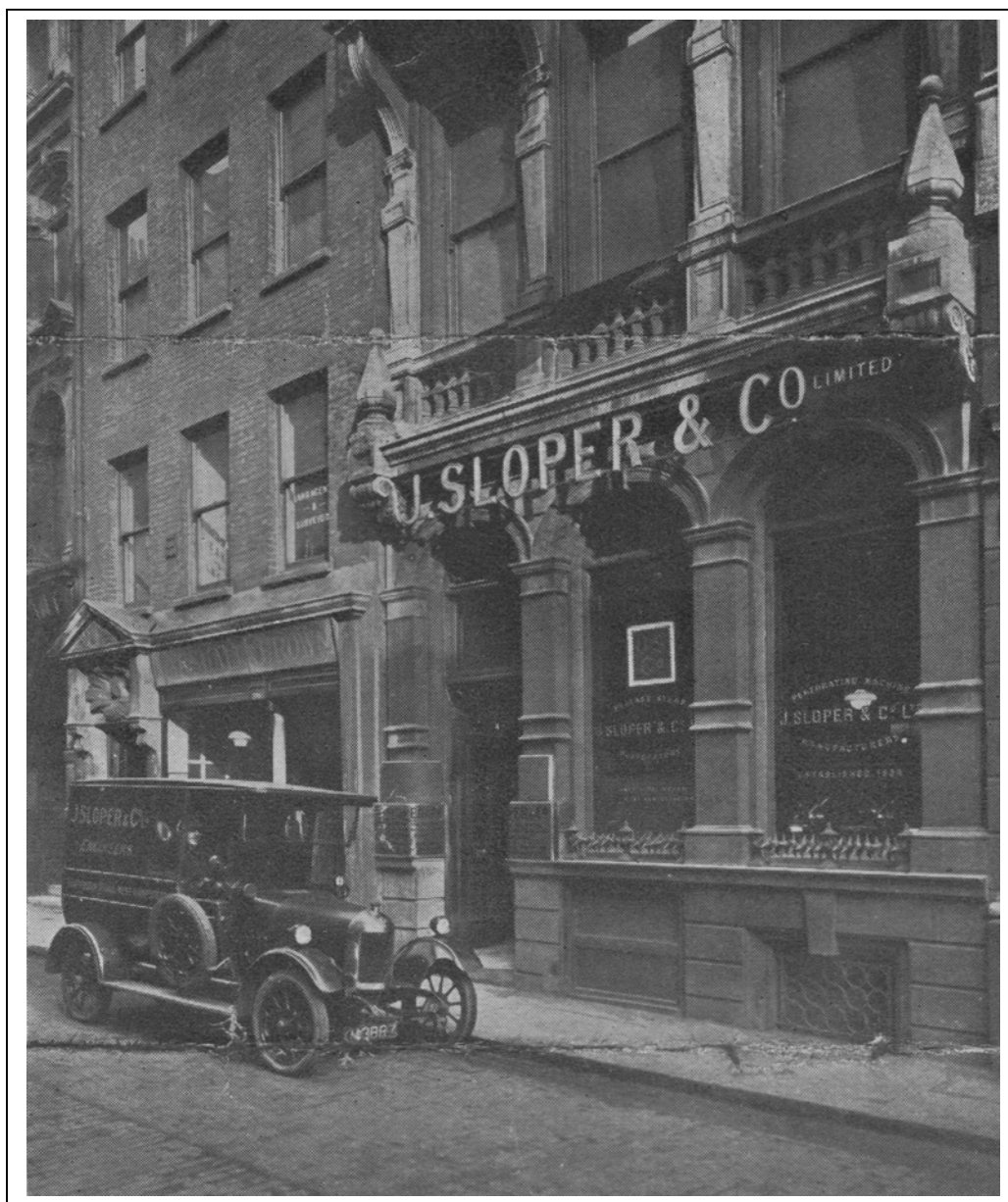
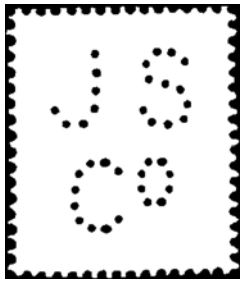


**J. SLOPER & CO – BUDGE ROW PHOTOS**  
**Maurice Harp**

When the Society acquired the Sloper records included in the papers was a cut out page from an unidentified publication that had been stuck onto a piece of card. The page is simply entitled J. Sloper & Co. Ltd. *Offices:* 22 Budge Row, E.C.4. Below are two photographs one above the other. The first photo shows the outside of Slopers office in Budge Row and the second shows an internal shot.



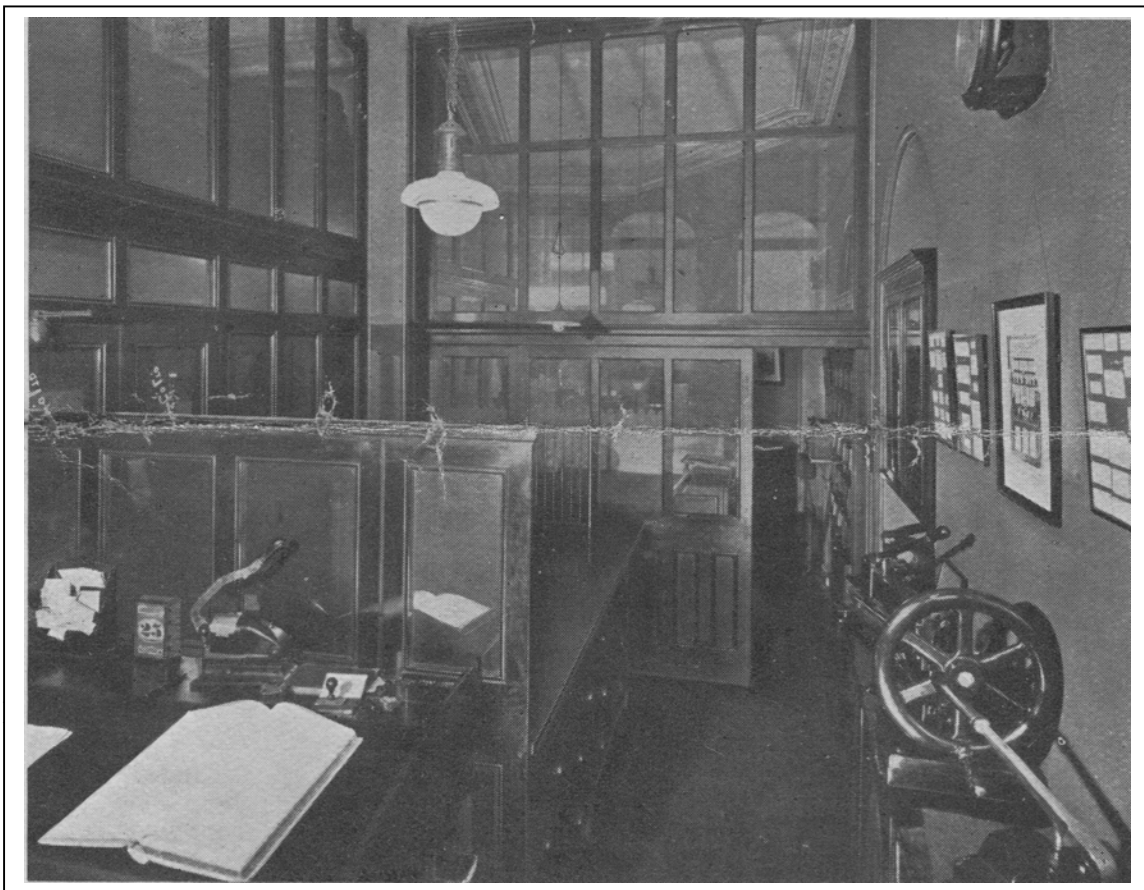
Slopers moved to Budge Row in 1914 and maybe these pictures were taken to mark the move to the new premises. The van parked outside has the inscription J. Sloper & Co – Engineers. I guess that the van



was used for delivery of perfin to London customers. The square shape that can be seen in the left window is actually a giant dummy postage stamp with a perfin JS/Co presumably used to advertise the business. Our Illustrated Catalogue illustrates a similar strike of a die, which was used by Slopers for advertising but has never been reported used on stamps.

The inscriptions on the windows are harder to read. The one in the right window reads "*Perforating Machine / J. Sloper & Co. / Manufacturers*" and the one in the left probably reads "*Postage Stamps / J. Sloper & Co. / Perforators*".

The second photo shows the inside of part of the office. It seems to be a day off for the workers. In fact the desk calendar shows the 25<sup>th</sup> so maybe it was Christmas Day.



It is a typical Edwardian office but with a single headed perfin machine on the high clerks desk above the ledger. There is another larger machine against the right hand wall. Altogether an interesting insight to the business at that period.