

SECURITY ENDORSEMENT & PERFIN SOCIETY OF G.B.
(Affiliated to the B.P.A.)

NEWS-SHEET

No. 82 July 1966

Subscription 10/- per annum.

PRESIDENT : C.Jennings

SEC/EDITOR : R.Bowman

CAT.EDITOR : B.Tomkins

LIBRARIAN : F.Summers

CHANGE OF ADDRESS

Would you please note that Mr Tomkins has now moved to Thetford as given above.

PERFIN ARTICLE

Mr Jennings informs us that "Stamp Collecting" have accepted an article written by him, and that the editors will be publishing it in a special Great Britain number due to appear in September as a season opener.

The article is an abbreviated version of the chapter "The Joseph Sloper Story", which we have yet to publish as part of Mr Jennings book, and if not cut further, it may well run to two issues of "Stamp Collecting".

The full chapter will, of course, be published by the Society and sent to these members who are interested, however the present situation makes publication unlikely until nearer the end of the year.

EDITORIAL JOTTINGS

* As mentioned in our last issue my spare time is extremely limited at the moment. I am working most evenings and weekends to complete a project, and around the 8th August I have to go to the, U.S.A. for two to three weeks. As a result this issue is not only late but is also much smaller than I had hoped. The August issue is going to suffer similarly but after that I hope we shall be back to normal.

In addition, due to Mr Tomkins recent removals he has been unable to prepare stencils for the catalogue which would have helped to make this issue a little bigger. In the past he has used the office machine for cutting stencils and until he had settled into his new job it was uncertain whether he would be able to continue with this arrangement. Happily, it seems that he can and will continue with the two listings next month.

* Please remember the auction. Closing date for bids is 31st August so there is still time to get off your bids.

ESSEN and OBERHAUSENWest Germany

<u>On Posthorn issue</u>			<u>On Heuss Watermark 294,</u>		
1045	2pf. apple green	(b)	1122a	30pf. grey green	B
46	4pf. yellow brown	A	ab	40pf. blue	A
47	5pf. bright purple	A	b	50pf. yellow olive	A
48	6pf. orange	A	c	60pf. brown	C
49	8pf. grey	A	d	70pf. violet	C
50	10pf. green	(b)	e	80pf. orange red	E
51	15pf. violet	B	f	90pf. bluish green	E
52	20pf. carmine	A			
53	25pf. plum	B	<u>On various Commemoratives</u>		
54	30pf. blue	C	1123	10pf. green	A
55	40pf. purple	B	24	4pf. deep green	A
56	50pf. blue grey	E	25	20pf. red & grey brown	B
57	60pf. red brown	F	26	7pf + 3pf red brown	A
58	70pf. yellow	G	27	10pf + 5pf green	B
59	80pf. rose red	H	28	20pf + 10pf red	C
1088	20pf. turquoise, red		30	10pf green	A
	black, orange brown	C	31	5pf. magenta & black	(b)
			32	10pf. blue green & blk	(b)
1093	4pf. brown	A	33	15pf. blue & black	A
94	10pf. green	B	34	20pf. scarlet & black	A
95	20pf. red	C	35	10pf. pale emerald	A
96	30pf. deep blue	F	37	20pf. black & scarlet	B
			38	7pf. black, red brown,	
				olive	A
<u>On Heuss issue</u>			39	10pf. black, green	
1103	2pf. lt. olive green	(a)		olive	A
04	4pf. orange brown	(b)	40	20pf. lake	B
05	5pf. mauve	(b)	42	20pf. reddish purple	B
06	5pf. brown	A	47	10pf. dull yell. green	A
07	8pf. grey	A	53	20pf. brown red	A
08	10pf. emerald	(b)	66	20pf. green, orange	
10	15pf. chalky blue	A		red, black	C
11	20pf. carmine	(b)			
12	25pf. brown purple	A			
13	30pf. pale blue	B			
14	40pf. reddish purple	(b)			
15	50pf. slate black	B			
16	60pf. lake brown	D			
17	70pf. yellow olive	D			
18	80pf. deep red rose	D			
19	90pf. green	E			

The perfins from Oberhausen are sometimes rated slightly higher than those from Essen, but only one indication of comparative ratings is given here.

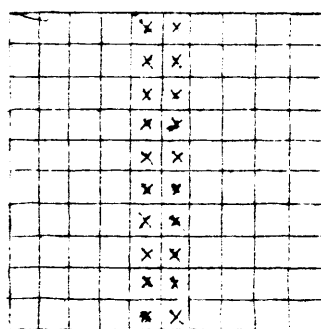
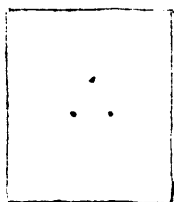
2.6. HUNGARY

Although the three hole triangular perforation was applied by the Post Office, stamps so perforated were not for Official use.

Various explanations have been given for their existence such as, that the holes represented the three lost provinces etc. Mr J.Jarvis, the Rhyl philatelist, who has a wide knowledge of Hungary, informs me that the stamps were perforated as a measure to prevent speculation at a time when the currency was in difficulties. It was thought that collectors and dealers would not want sheets of stamps with two rows perforated with triangles, however, many people were interested in the novelty, and were eager to obtain examples especially of those pieces showing stamps with and without the "perfin". Sheets of stamps could be bought without the perforation of the three holes for a surcharge of 10%.

The triangular perforations are found on the middle rows of the sheets of stamps, in vertical or sometimes in horizontal positions. On Official and Postage Due stamps the perforations are sideways, either to right or left. They were applied during the period 1921 to 1924 and exist on many of the stamps in use at that time.

The following short list has been compiled from information received from ncmbers, in particular from Mrs H.T.Van Dyke, and iviesars. Bowman, Burrows and Welsh.



Arrangement on sheet

On The 1916-18 Issue

S.G.	252	6f	greenish blue	
	253	10f	rose red	
	255	20f	grey brown	
	263	2k	bistre brown	Ø

On The 1919-20 Issue

S.G.	320	2k bistre-brown	∅	
	321	3k grey & dull violet	∅	
	322	5k brown	∅	
	323	10k magenta & chocolate		

On The 1922-23 Issues

S.G.	384	50f ultramarine	∅	*
	385	1k bright blue		*
	387	2k greenish blue	∅	
	388	2½k deep green	∅	*
	389	3k yellow brown		
	390	4k bright rose	∅	*
	391	4½k dull violet	∅	*
	392	5k brown	∅	*
	393	6k blue		*
	394	10k purple brown	∅	
	395	15k grey black		
	396	20k claret		
	399	40k green		
	400	50k blue		
	401	100k yellow brown	∅	
	402	400k turquoise green		

On The 1923-24 Issues

S.G.	414	25k orange	∅	
	419	200k yellow green		

On The 1921 Official Issue

S.G.	0.1	10f purple	∅	*
	0.2	20f brown	∅	*
	0.3	60f grey		*
	0.5	250f blue	∅	
	0.7	500f brown	∅	
	0.8	1000f pale chocolate	∅	

On The 1922-23 Official Issue

S.G.	0.11	5k brown		*
	0.12	10k chocolate		
	0.13	15k grey black		
	0.15	50k red and brown	∅	
	0.16	100k red and bistre		
	0.17	500k red and orange		

NOTE: Mint stamps are indicated by *
Used stamps are indicated by ∅