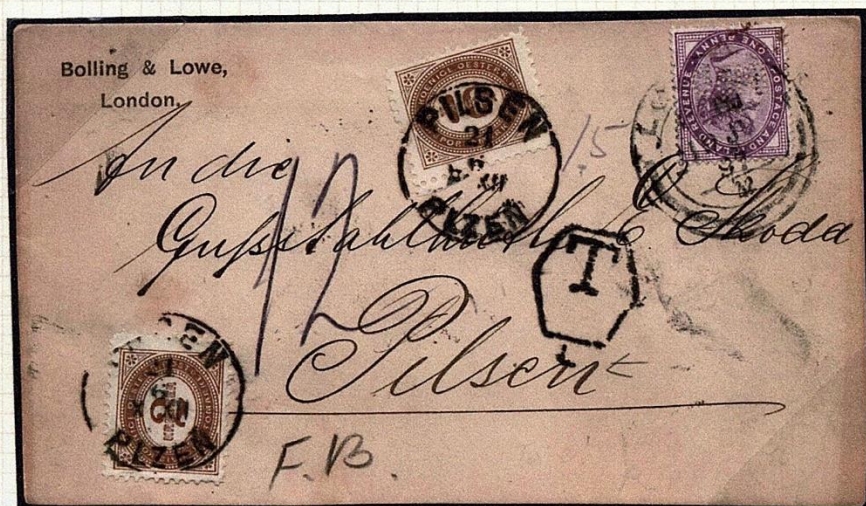


GREAT BRITAIN PERFINS

FOREIGN LETTER POSTED WITH INLAND POSTAGE PAID

Bolling & Lowe based their perfin on a previous business name



A common mistake resulted in this 1897 letter being underpaid by 1½d and double the deficiency, equivalent to 12 kreuzer, being collected from the recipient in Austria. Postage due stamps were introduced in Austria in 1894, 20 years ahead of Great Britain.

Francis Bolling and John Edgar Lowe went into partnership as **Bolling & Lowe** in 1879 to acquire the business of **William Bird & Co**, iron and steel merchants.

The perfin die (B3690.01M) is reported used between 1890 and 1935.

GREAT BRITAIN PERFINS

UNDERPAID POST CARD REFUSED IN NEW YORK

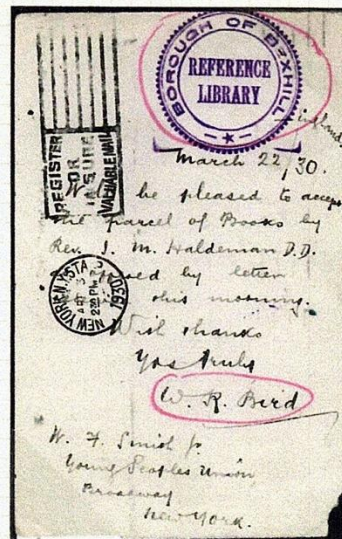
Bexhill Corporation



Underpaid post card sent from Bexhill on Sea to New York on 22 March 1930. The correct rate was three halfpence so two cents was due from the addressee who refused the item.

The post card would have been returned to the Dead Letter Office in London where it would have received the instructional mark '1d Jwp' but the library would not have needed to pay as no postage due stamps were applied.

The perfin die (B1110.4Ba) is reported used between 1905 and 1940.

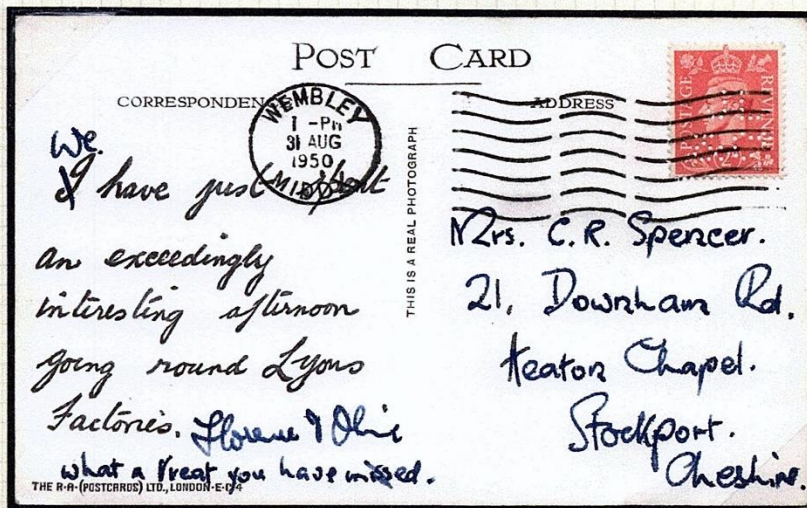


GREAT BRITAIN PERFINs

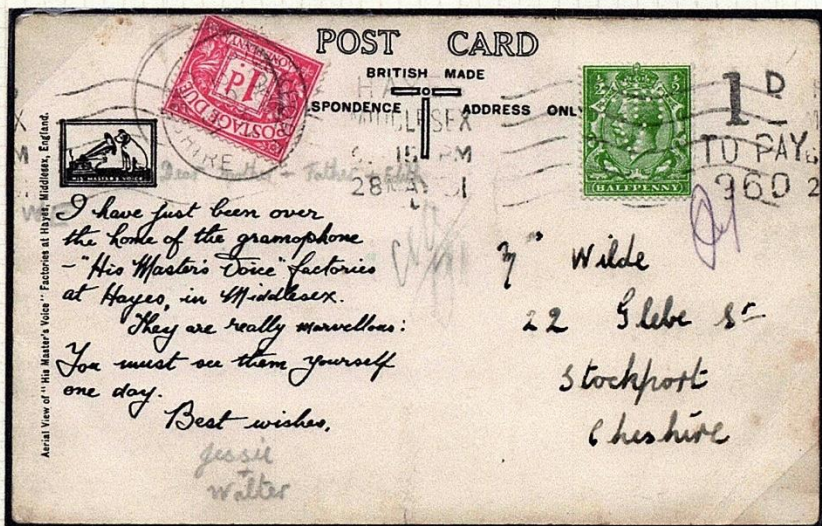
SENT TO FAMILY AND FRIENDS AFTER A FACTORY TOUR



Die in use
1941-1975



J Lyons & Company Ltd – Greenford Factories Stamped as a post card with 2d postage



Die in use
1930-1934

“His Master’s Voice” - Hayes Factories Stamped as printed matter on 28 May 1931 with ½d postage, but postage due of 1d was collected because the Post Office regarded it as a post card despite the message being printed and not written by hand.

GREAT BRITAIN PERFINS

UNDERPAID PARCEL POST

THE
Hillman Motor Car Co. Ltd.

To..... Messrs. Charles F. Higham Ltd.,
Africa House,
..... Kingsway, LONDON, W.C.2.
.....
COVENTRY.

92476

The minimum parcel post rate was 6d for up to 3 lbs, resulting in postage being underpaid by ½d.

The Charge comprised the ½d deficiency in postage at single rate plus a 1d fine for the parcel not having been handed over a post office counter, hence being treated as 'posted out of course'.

The total payable was 7d.

The perfin die (H4490.02) was delivered by J Sloper & Co to Humber Ltd, cycle manufacturers in 1901 and was later used by The Hillman Motor Co Ltd, Coventry until 1945.



Charge

Date Stamp.
WARWICKSHIRE
11 55
1911

The charges shown to be levied on this parcel, and denoted by Postage Due Labels affixed to parcel and date stamped before delivery.

	£	s.	d.
Re direction Charge			
Fine (Posted out of course) less.....d.			
excess Postage....			
Compulsory Registration.....			
Deficient Postage....			
Total			

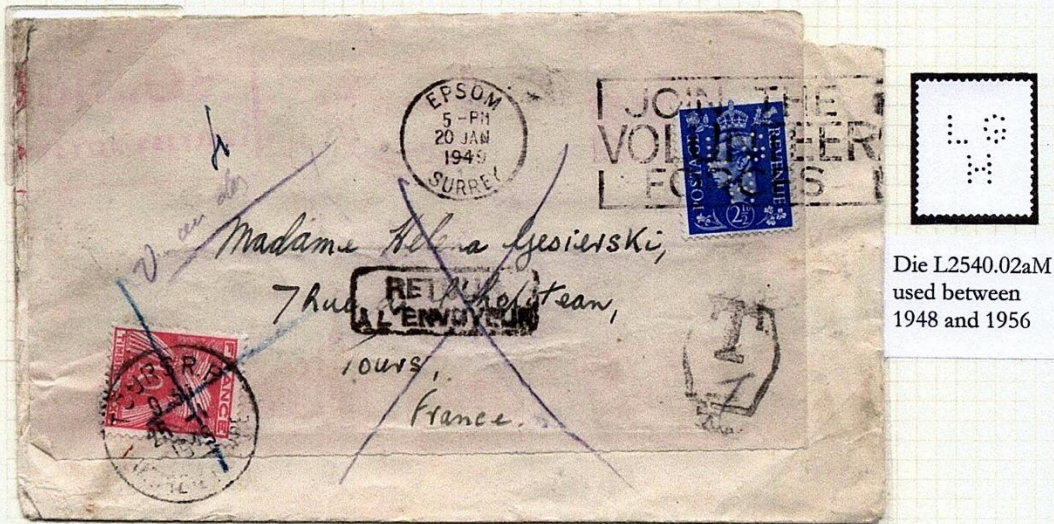
This label is to be affixed as near as possible to the address on the parcel and in addition the letter "C" should be written across each address in a conspicuous manner in either red or blue pencil.

GREAT BRITAIN PERFIN

A HOSPITAL TRANSFER FOR POLISH PATIENTS

Long Grove Hospital, Epsom, Surrey

In 1943, 300 Polish servicemen suffering from neurasthenia were admitted, many of whom later became chronically mentally ill. A further intake of Polish patients took place in December 1948 after a Polish hospital in Shropshire closed.



A reused window envelope sent to France in January 1949 to a woman with a Polish surname, possibly the wife of a Polish patient.

The cover was treated in the UK as though it was being sent by air and not by overseas surface mail for which the postal charge was 3d instead of 2½d, and a Taxe mark applied accordingly.

The additional postage due in Tours was calculated as:-

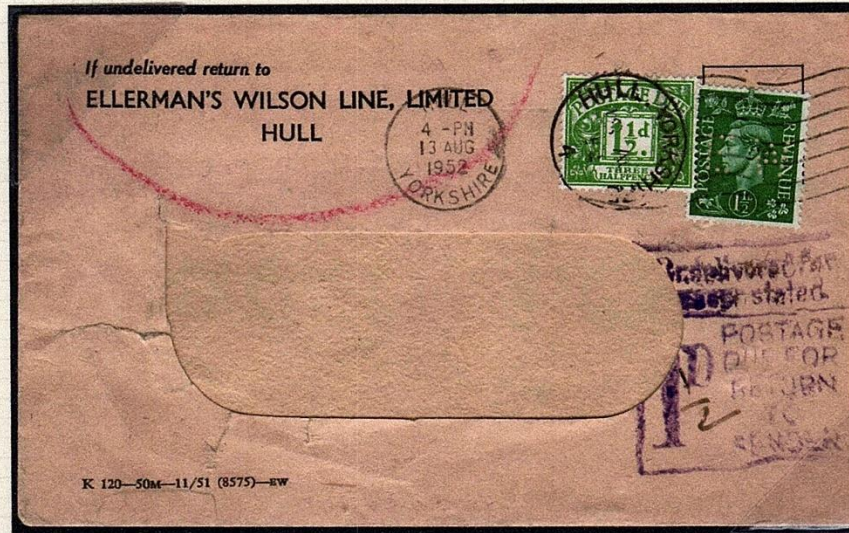
Double the deficiency x UPU rate from France to the UK
Correct postage

$$\frac{2 \times \frac{1}{2}d \times F.Fr 31}{3d} = F.Fr 10.33 \text{ (rounded to F.Fr 10)}$$

The postage due of F.FR 10 was cancelled as the letter could not be delivered to the addressee who had moved away without leaving a forwarding address.



Ellerman's Wilson Line Limited
Single inland printed papers rate of 1½d
Return to Sender Fee



Cover sent from Hull on 13 August 1952 arriving at Stornoway, Isle of Lewis on 15 August and being returned to Hull on 18 August.

A 1½d postage due label was added on its return to Hull to collect the cost of carrying the cover back to Ellerman's Wilson Line Ltd, a charge equal to the normal outward postage cost.

The perfin die is known used between 1941 and 1973.

In 1973, all Ellerman shipping companies were merged into one division, and sold to the Barclay Bank in 1983. After a management buy-out in 1985, it was sold to the Trafalgar House Group which merged with their own Cunard Line to form Cunard-Elleman in 1987. Andrew Weir Shipping Group purchased it in 1991 and then sold it to Hamburg Sud in 2003. In 2004 the Ellerman name was dropped.



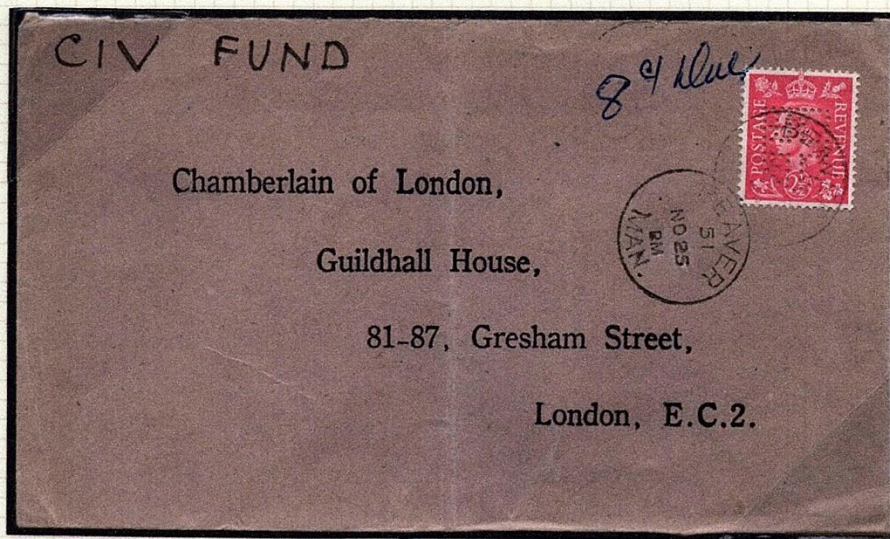
DEVON ALBERT LEAF
No. 1943
STANLEY GIBBONS LTD, LONDON, ENGLAND
© 1985 Stanley Gibbons Ltd



GREAT BRITAIN : PERFINS SENT TO CANADA

STAMPS FROM GB NOT VALID IN CANADA

City of London Corporation – C I V Fund



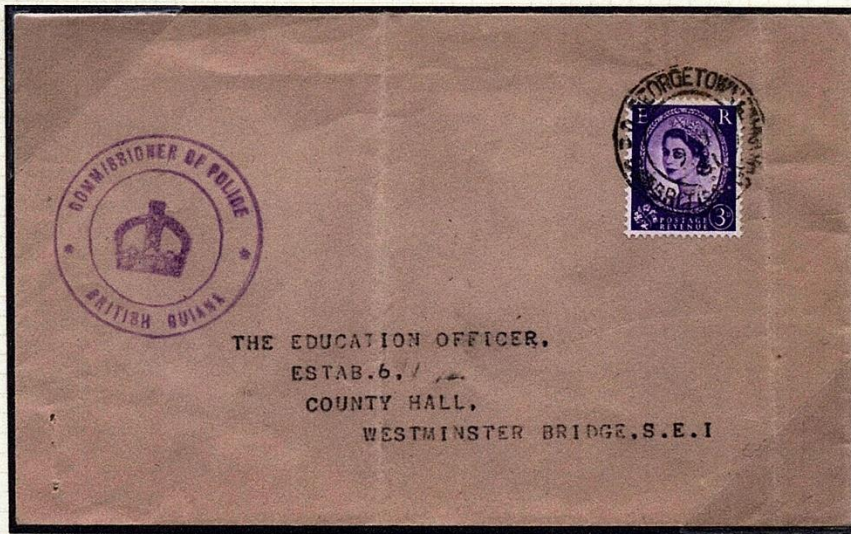
Money was raised by the City of London Corporation and its businessmen to pay for detachments of volunteers who set sail in January 1900 to fight in the Boer War. The amount raised not needed for the war effort was transferred into the City Imperial Volunteers Fund set up on their return so as to grant compassionate allowances or pensions to the volunteers, their families and dependents. The money ran out in 1971.

It is assumed the Fund administrators did not differentiate between inland and overseas destinations when sending out stamped addressed envelopes in which the receipt of a pension could be acknowledged. The 2½d stamp prepaying the UK inland letter rate was invalid in Canada, so the cover was marked "8c Due" in manuscript which was double the deficiency. However, no tax mark was applied and a surcharge of 5d, the equivalent of 8c, was never collected in London.

The perfin die, with 62 holes, is known to have been used between 1925 and 1976.



London County Council
Stamps from G B not valid in British Guiana



Stamped addressed envelope sent in 1961 by the London County Council being returned by the Commissioner of Police in Georgetown, British Guiana. The contents comprised a reference relating to a job application to work in an Inner London school from a former resident of British Guiana.

Perhaps the cachet from the office of the Commissioner of Police deterred the local post office staff from correctly treating the stamp as invalid!

The London County Council's local Education Authority took over responsibility for education in Inner London from the London School Board in 1904 and transferred it to the Inner London Education Authority (ILEA) when the Greater London Council replaced the London County Council in 1965.

The Sloper perfin die (L1020.01cM) is known used between 1954 and 1985.



Ellerman's Wilson Line Limited
Europe all-up letter rate not over 1 oz



Cover sent from Hull to Holland on 29 June 1961 at the minimum inland letter rate of 3d instead of the all-up rate of 6d. Because there was a deficiency of 3d, the recipient would have had to pay Hfl 0.30.

The additional postage due in Holland was calculated as :-

Double the deficiency x UPU rate from Holland to UK =
Correct postage

$(2 \times 3d) \times \text{Hfl } 0.30 = \text{Hfl } 0.30$
6d

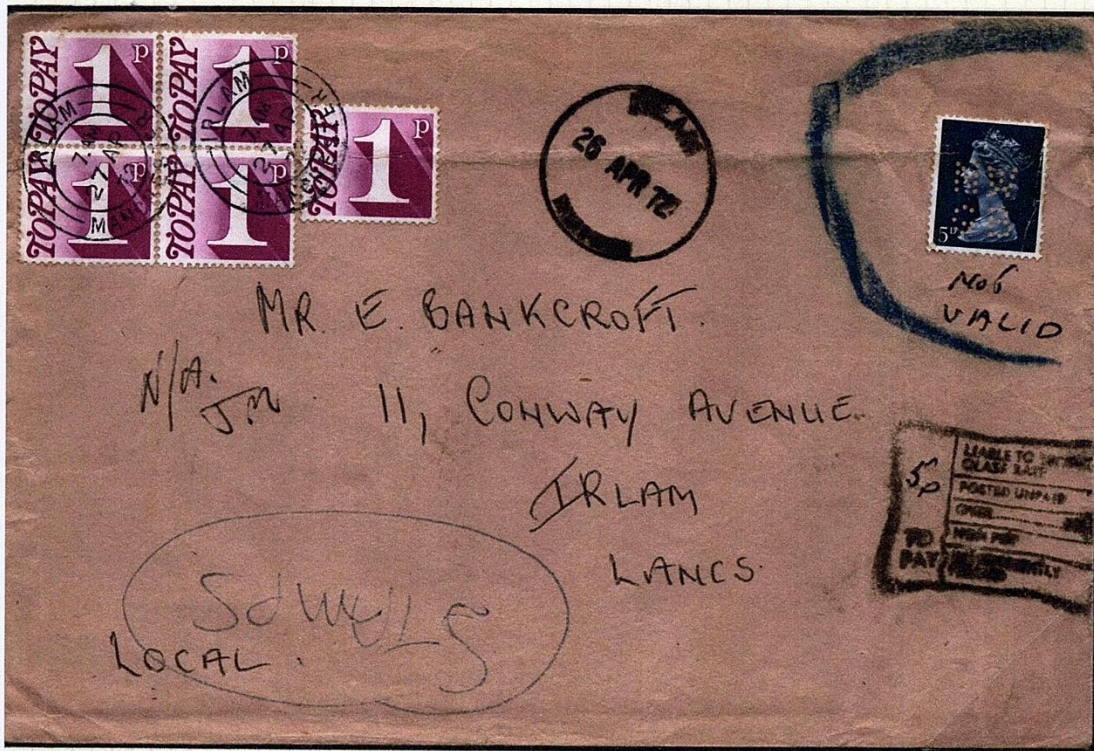
The perfin die is known used between 1941 and 1973.



GREAT BRITAIN PERFINS

THEIR USE IN BRANCHES AWAY FROM HEAD OFFICE

North Western Gas Board



Perfins are less attractive than normal stamps for employees to steal when working in small outlying units. However, management should have replaced the stock of £.s.d denominated stamps at their Irlam Showrooms before they became invalid on 1 March 1972.

The 5p postage due is charged at double the 2nd class postal rate.

The perfin die (N3610.01M), which had noticeably larger holes from around 1970 onwards, is reported in use between 1952 and 1973. Thereafter the 'B' pins were removed from the die following a name change to North West Gas.



Greater London Council / ILEA
Stamps no longer valid



The Education Officer,
Inner London Education Authority,
The County Hall,
London, S.E.1.

Stamped addressed envelope bearing 3 x 4d stamps which were only valid up to 29 February 1972 following decimalisation of the currency. But why use old GLC stamps? On 21 September 1973, the first step second class letter rate was 3p, so the indicated amount payable by the recipient of 6p was double the deficiency.

The Sloper 12 x 1 multihued die (G3100.01M) is known used between 1965 and 1986.. The die was probably refurbished in 1970 as noticeably larger perforation holes have been reported as having been used from September 1970 onwards.