

AS Property Co. Build

Price From
\$768,400

facade as shown may be altered to suit developer requirements—lighting and landscaping are indicative only.

Lot 1309 (12 Nowlan Street)
WILLOW ESTATE,
GISBORNE

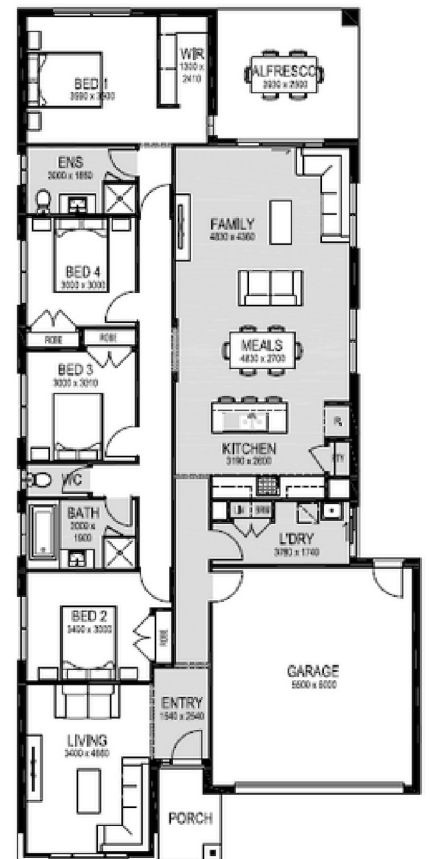
HOUSE AREA	224.82m ²	HOUSE PRICE	\$353,400
LAND AREA	504m ²	LAND PRICE	\$415,000
STATUS	Titles Oct 2023	TOTAL PRICE	\$768,400

Turnkey Inclusions:

- ✔ Full turnkey package
- ✔ Fixed price (including site costs)
- ✔ Split cycle cooling system to family room
- ✔ Venetians and holland blinds to all windows
- ✔ Quality carpet and tiled flooring throughout
- ✔ Fully landscaped front and rear gardens, including coloured concrete driveway, path and rear outdoor living area, fences to sides and rear, clothesline and letterbox

Note: Minimum lot size may vary depending on the estate design guidelines and building envelopes. Floor plan areas may vary slightly in size depending on facade selection. Floor plans shown are not to scale. Floor plan may be mirrored to suit garage crossover location. Fixed price GST inclusive. Pricing subject to change without notice

4 2.5 3.5 2



Contact

0435 611 383

build@aspropertyco.com.au

Visit Our Website

www.aspropertyco.com.au