



Building a Resilient Future

An Integrated Blueprint for Sovereign Communities,
Synthesizing Ancestral Wisdom and Modern Science.



Indigenous
Production
Trade Alliance

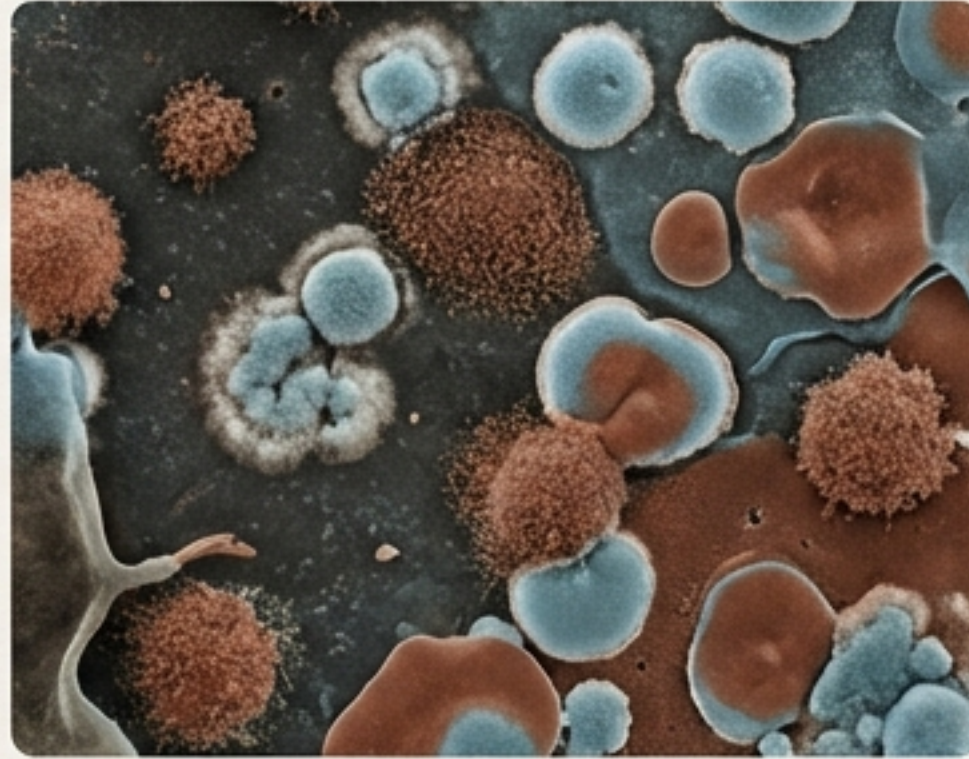


Native
Build
Group

The Failure of Conventional Development



CLIMATE CRISIS: Intensifying storms and wildfires threaten our homes and infrastructure.



HEALTH CRISIS: Standard construction materials create toxic indoor environments, leading to chronic illness.



HOUSING & ENERGY CRISIS: A critical lack of affordable, sustainable housing and a dependence on fragile, expensive energy grids.

A New Paradigm: Restoring Health, Resilience, and Sovereignty.



Our mission is to build a new future by synthesizing Indigenous Traditional Ecological Knowledge (TEK) with cutting-edge science. We are moving beyond siloed solutions to create a holistic model for living that is culturally relevant, respectful to the land, and economically self-sufficient.

The Blueprint for a Circular 'Seed to Shelter' Economy



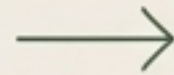
We have developed a replicable blueprint that transforms regenerative agriculture into healthy homes and sovereign communities. It's a closed-loop system that revitalizes land, localizes supply chains, and builds lasting prosperity.

The Engine: The Indigenous Production Trade Alliance (IPTA)

Restoring Soil Health: A large-scale, Indigenous-led initiative revitalizing over 1.2 million acres through cover crop cultivation and phytoremediation.

Carbon Sequestration: This modern application of ITEK restores degraded lands while sequestering significant amounts of atmospheric CO₂.

The 'Seed': This agricultural feedstock provides the essential hemp and botanicals for our portfolio of high-performance, non-toxic building materials.



The Core of the Home: The Healthy Home Standard



HEALTHY (Indoor Air Quality & Non-Toxicity)

Eliminating indoor pollutants at the source for a fundamentally healthy living environment.



RESILIENT (Structural Integrity & Defense)

Engineered for superior safety against fire, storms, and pests.



SUSTAINABLE (Environmental Responsibility)

Minimizing the lifecycle carbon footprint through intelligent material selection.



WELLNESS ECOSYSTEM (Integrated Systems)

A home that actively supports occupant health through integrated power, air, and water systems.

Healthy and Sustainable by Design



A Hybrid Approach: An innovative system combining the strength of steel with the sustainability of botanicals.



The Core: Cold-Formed Steel Frame

- Highest strength-to-weight ratio.
- Made with 77% recycled steel; 100% recyclable.
- **Inorganic:** Will not rot, warp, support mold growth, or be damaged by termites.
- **Non-Combustible:** Does not burn or contribute fuel to a fire.



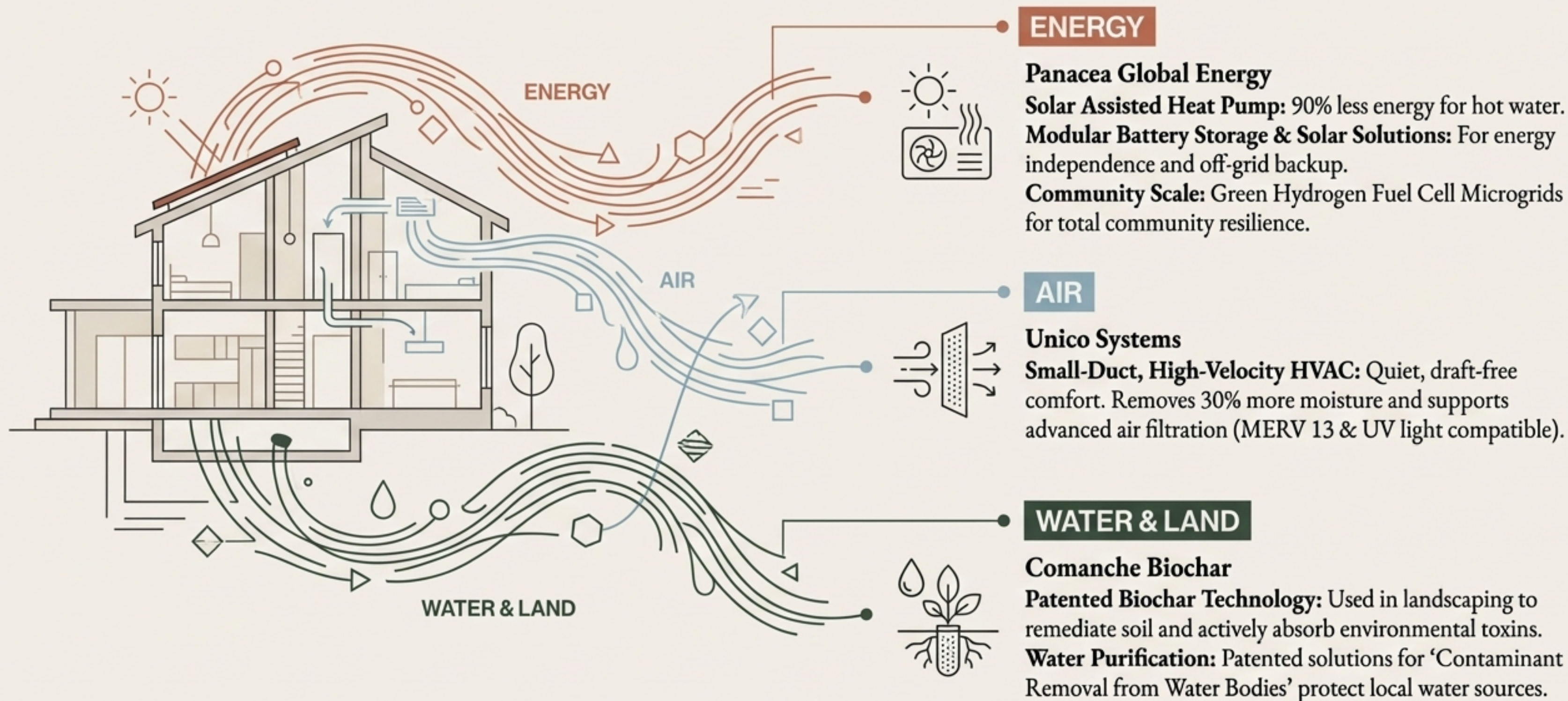
The Envelope: Advanced Botanical Components

- Carbon-negative insulation (HempWool™) and sheathing (FiberPly™).
- Zero harmful VOC off-gassing. No chemical treatments required.

Engineered for Multi-Layered Defense



The Total Home Wellness Ecosystem



The Building Blocks: A Revolution in Materials



TREBAR™

Bio-based rebar. 2x stronger and 4x lighter than steel. Non-corrosive, non-conductive.



Hempcrete

Carbon-negative concrete alternative. Superior insulation and fire resistance.



FiberPly™

Structural sheathing replacement for OSB. Stronger, lighter, carbon-negative, VOC-free.



FREPOXY™

VOC-free, plant-based epoxy for coatings, composites, and adhesives.

Healthy, Sustainable, and Attainable

Lucas Evans' "Seed to Shelter" model demonstrates that this new standard of living is economically viable for the communities that need it most.

Target Cost: \$215,000 - \$235,000

For a 1,300 - 1,700 sq. ft. home.

Brazos Overlook Cabin Minka

Building a Sovereign Economy, Not Just Homes



Local Job Creation

Across agriculture, post-harvest processing, materials R&D, and construction.



Workforce Development

Targeted training programs for construction, with a focus on serving federally recognized tribes.



Farmer Collectives

Empowering local producers with the knowledge and resources for sustainable, regenerative practices.



Community Stewardship

Fostering long-term engagement in sustainability, soil health, and water conservation.

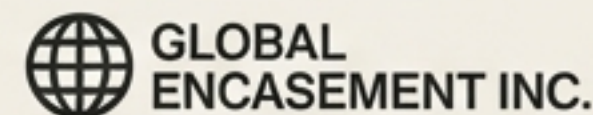
A Unified Force for Change



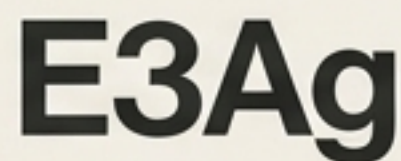
Indigenous Leadership & Agriculture



Energy & Environment



Advanced Materials & Construction



Home Systems



Research & Validation



Recognized by The Royal Foundation's Earthshot Prize, our alliance brings together leading experts across regenerative agriculture, material science, energy, and construction to deliver a fully integrated and proven solution.

The Future is Resilient. The Future is Sovereign.

This is more than a new way to build. It is a new standard for living—a replicable blueprint for creating healthy, self-sufficient, and prosperous communities for generations to come.

