

WI 028- Deva 028 camera installation / check	Date 12/04/10	Issue- 1	Author- Chris Walkley
--	------------------	----------	-----------------------

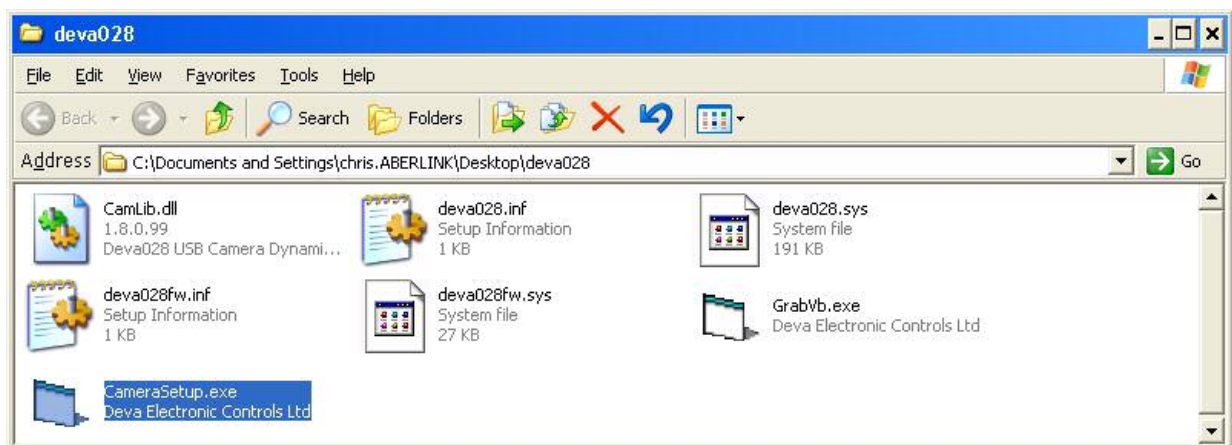
The deva 028 camera is a device used for capturing image data from parts for the purpose of vision inspection. Used on the Aberlink USB camera, and also the Aberlink Project X.

The unit is powered and controlled via the USB connection on the controller.

New installation

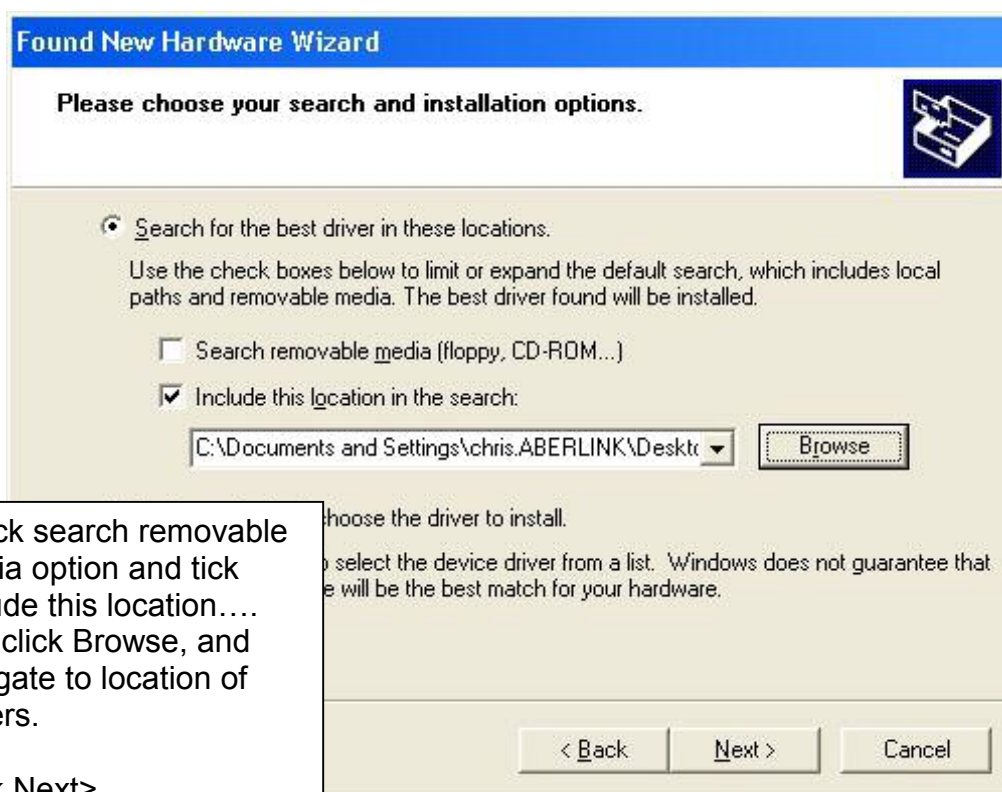
Connect device to a spare USB 2.0 port. On connection the pc should detect its presence and the following screen will appear.

Before connecting make sure you have drivers present. The drivers are available from the Aberlink ftp site under the deva folder, you will need the following files :-

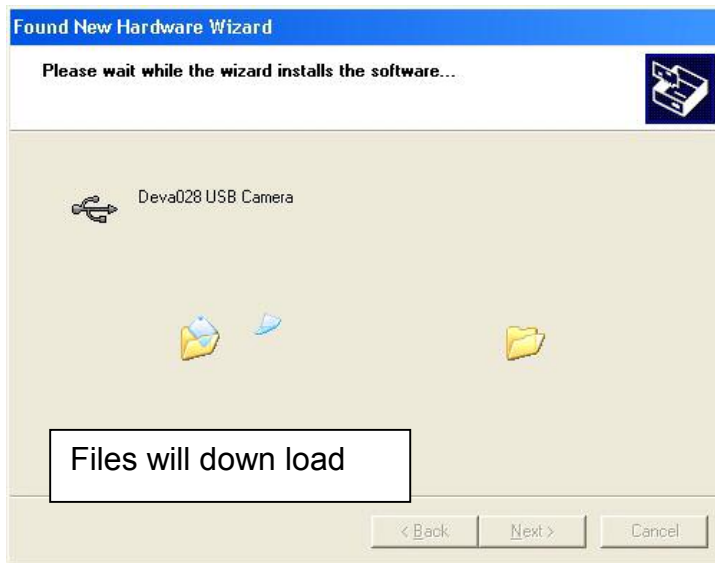


- Deva028.inf and deva028fw.inf** – needed to load drivers
 - Deva028fw.sys** – Firmware System file, have different versions and located in WINDOWS/System 32/drivers
 - Deva028.sys** – Driver for the deva028 camera
 - Camlib.dll** – Is a library file needed for interfacing s/w such as Aberlink located in WINDOWS/System 32
 - CameraSetup.exe** – is a utility program for assigning names to multiple cameras
 - GrabVb.exe** – is a utility for testing and configuring camera
- Important – Deva028.sys and camlib.dll are specific to Aberlink version.

WI 028- Deva 028 camera installation / check	Date 12/04/10	Issue- 1	Author- Chris Walkley
--	------------------	----------	-----------------------



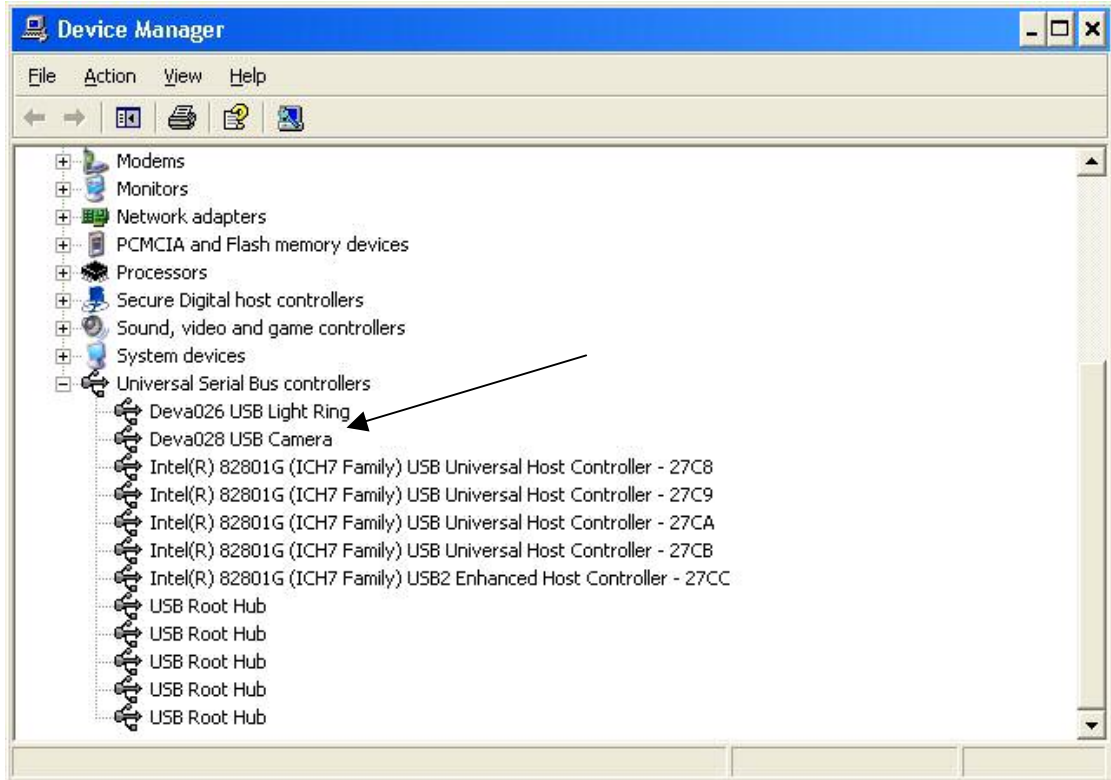
WI 028- Deva 028 camera installation / check	Date 12/04/10	Issue- 1	Author- Chris Walkley
--	------------------	----------	-----------------------



The software is now installed, it would of loaded the deva028.sys, deva028fw.sys and camlib.dll, remember these must be the correct version for the Aberlink software version.

WI 028- Deva 028 camera installation / check	Date 12/04/10	Issue- 1	Author- Chris Walkley
--	------------------	----------	-----------------------

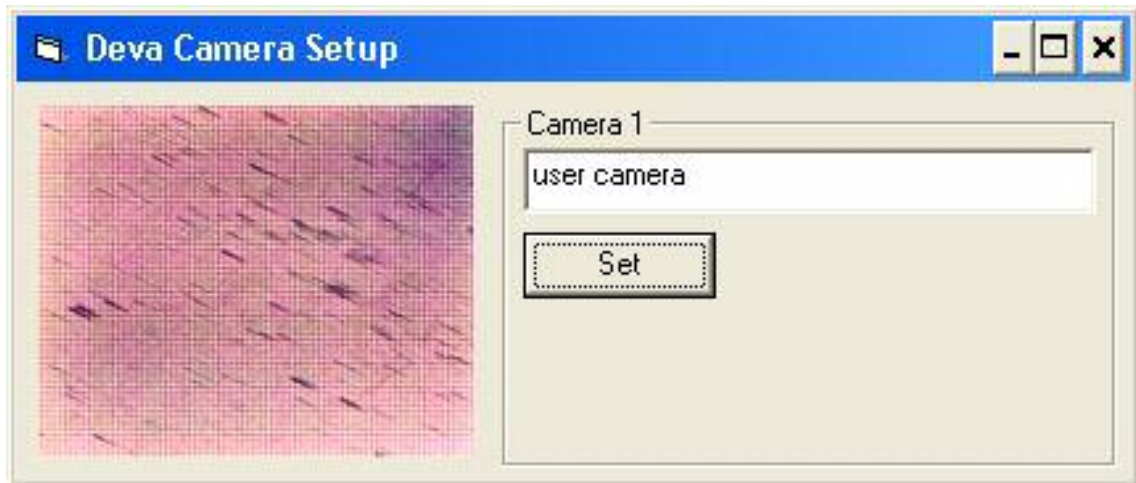
The deva028 is a USB device and as such should be visible within device manager as shown below.



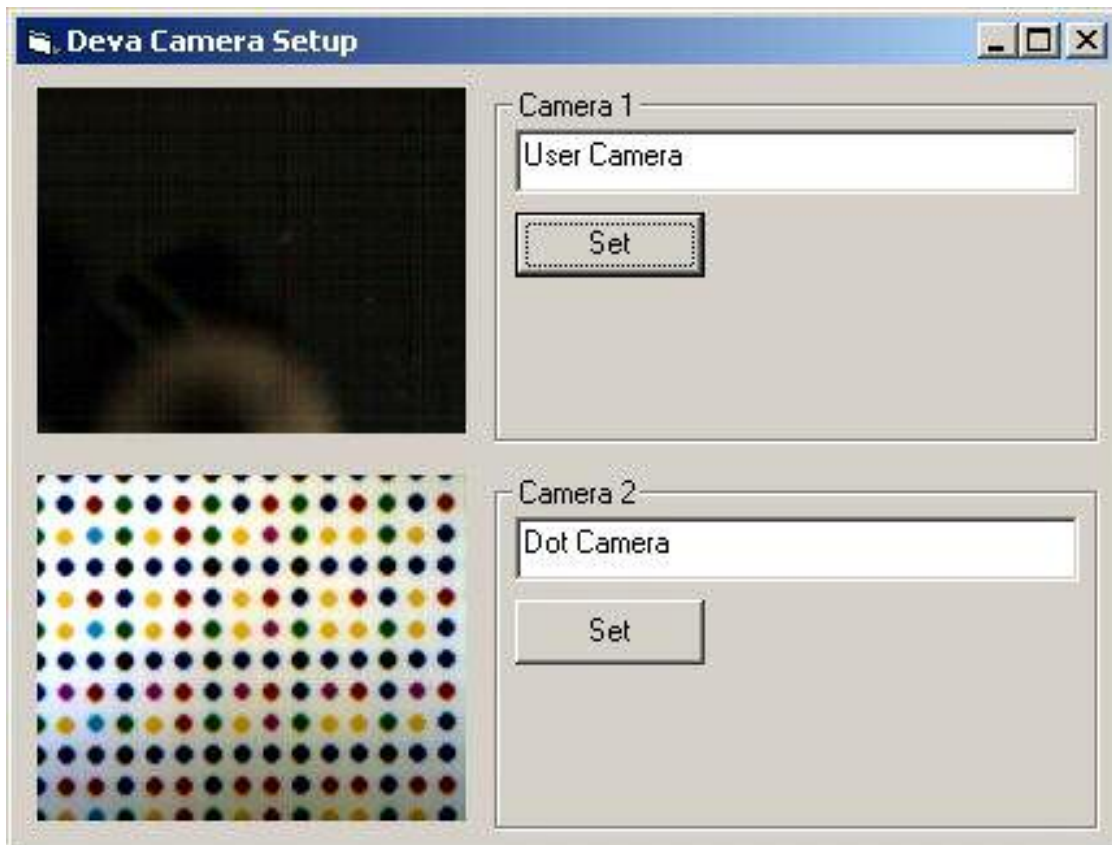
WI 028- Deva 028 camera installation / check	Date 12/04/10	Issue- 1	Author- Chris Walkley
--	------------------	----------	-----------------------

Testing the camera

To assign a camera, if using multiple cameras such as the project X, you can run camera setup.exe and check image and assign a name, in Project X, user camera for image and dot scale for the deva camera reading the scales.

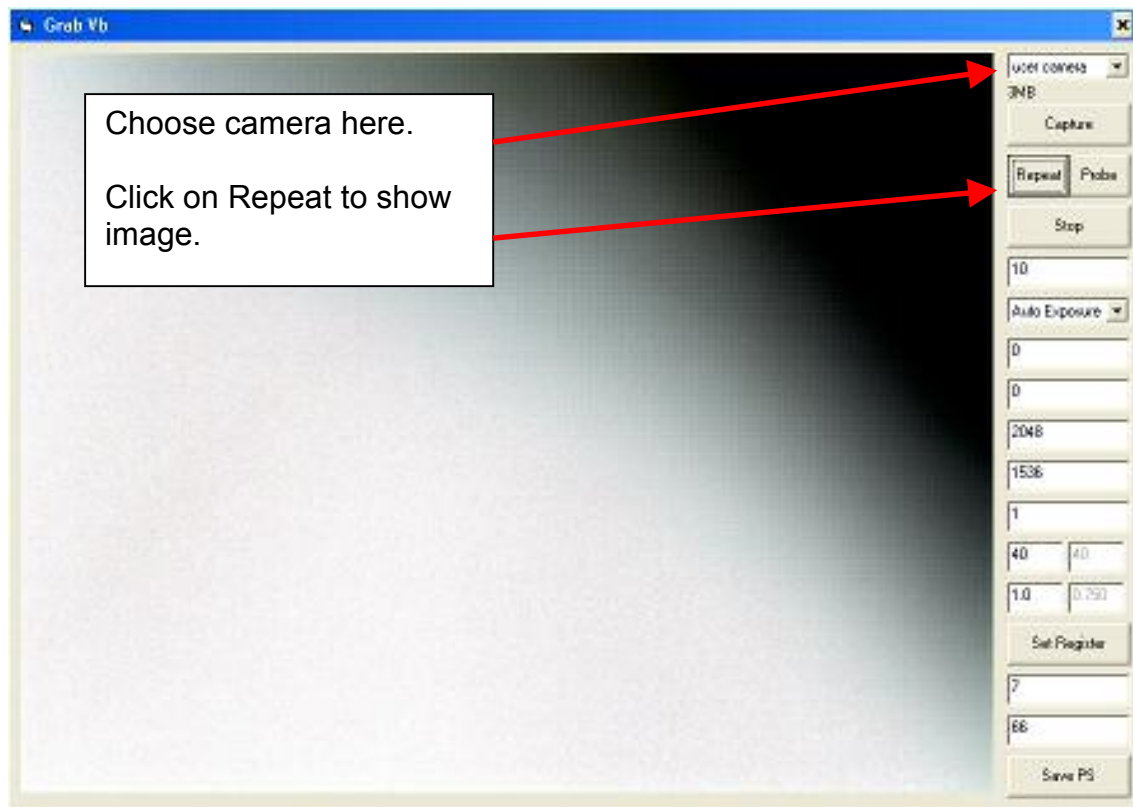


For Project X, setup as follows:-



WI 028- Deva 028 camera installation / check	Date 12/04/10	Issue- 1	Author- Chris Walkley
--	------------------	----------	-----------------------

A second utility called GrabVb.exe allows higher functions but in essence proves the camera is working by showing a live image.



Trouble Shooting

If the camera works using the utilities, but not in Aberlink then it is because the versions of camlib.dll and or deva028.sys are not compatible. When Aberlink software is installed it notifies you which deva drivers are needed.

Always check device manager for the fact the pc has detected the hardware. Sometimes it will be necessary to unplug and re-connect. Sometimes it may be necessary to use another USB port entirely. Avoid using USB hubs.

Important note, when windows detects the device it requests the deva028fw.inf (firmware driver) once the camera is coded it then requests the driver for the deva028.inf, making it appear to run twice. If you cancel the second hardware detection wizard the camera will not work.