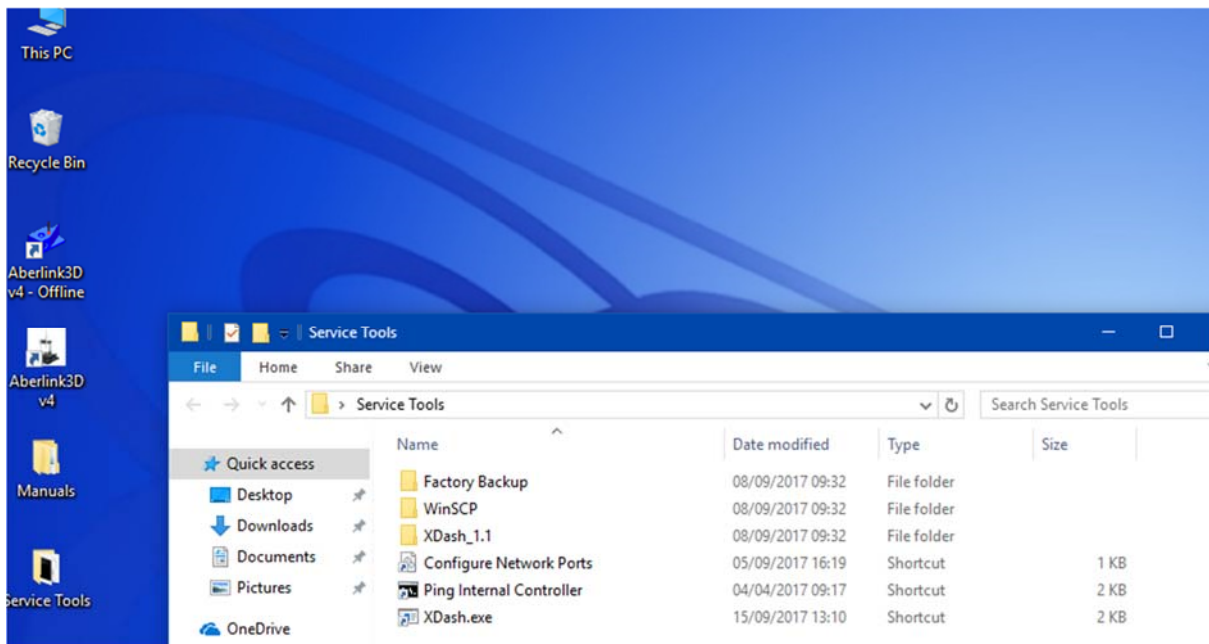


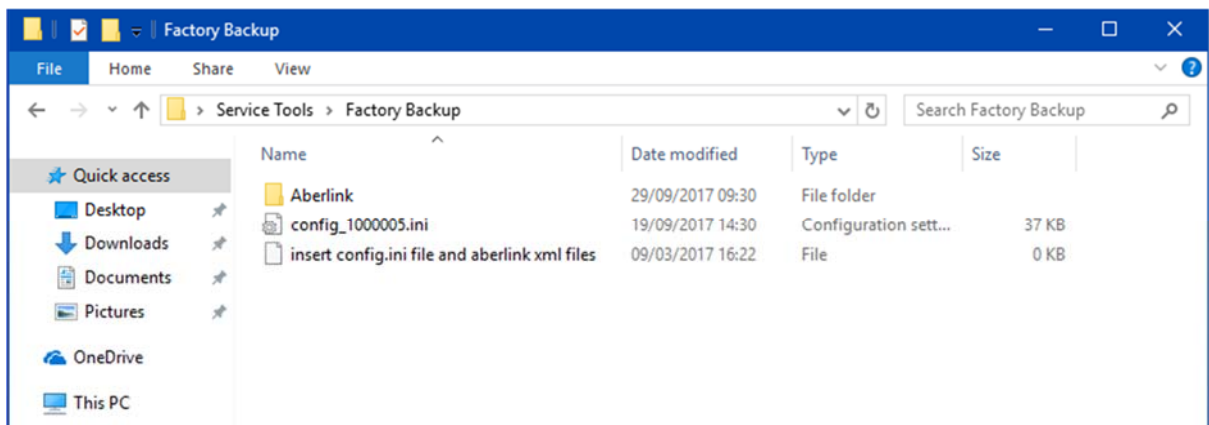
Restoring original Xtreme files from Factory Backup

All Xtreme machines are shipped with Factory Backup files. The original Aberlink folder from the Program Data directory is backed up and also the config.ini file for the generic controller pc.

On the desktop you will find a folder called Service Tools – this will contain a number of items, including a folder called Factory Backup and a folder called WinSCP.



The Factory Backup folder will contain the original config_XXXXXX.ini file for the generic controller and the original Aberlink folder from the Program Data directory.



Restoring the original Aberlink folder

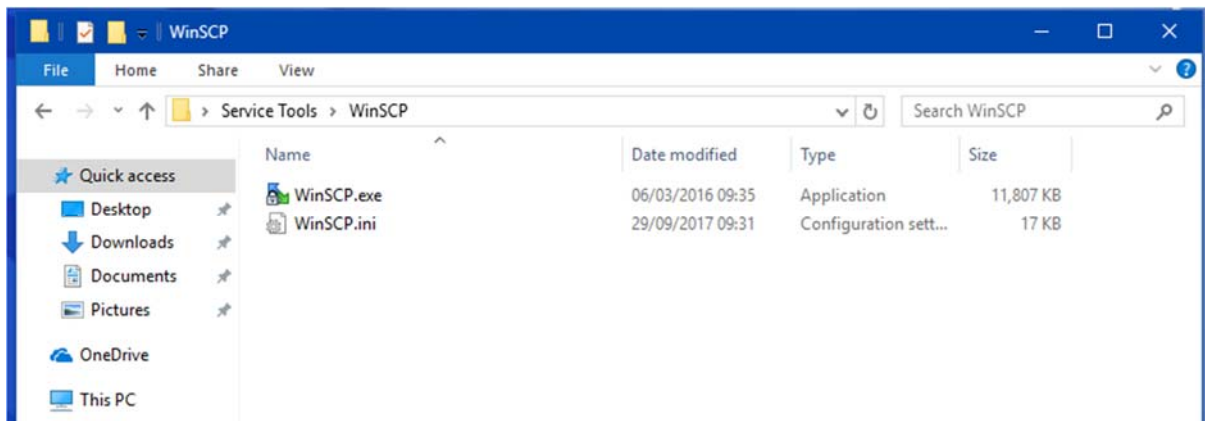
Close the Aberlink3D application if it is currently running. Remove the existing Aberlink folder from the Program Data directory on the C: drive – it is advisable to move the Aberlink folder to a temporary folder on the C: drive rather than delete it – once you have successfully restored the Factory backup files and are happy the Xtreme is working correctly you can then delete the temporary folder.

Copy the Aberlink folder from the Service Tools: Factory Backup folder to the Program Data directory on the C: drive

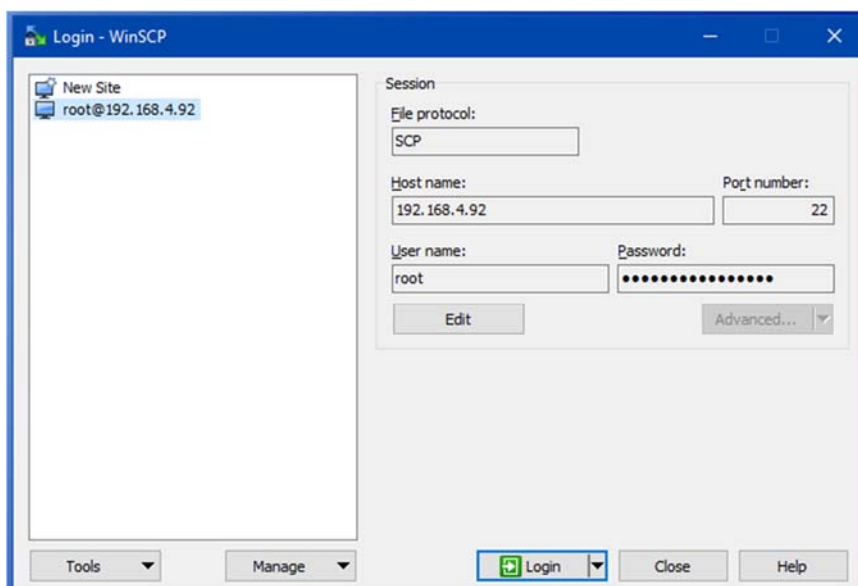
Restoring the original config.ini file

The config.ini file is loaded on the generic controller pc. The generic controller pc does not run under the Windows operating system so is not visible in Windows File Explorer.

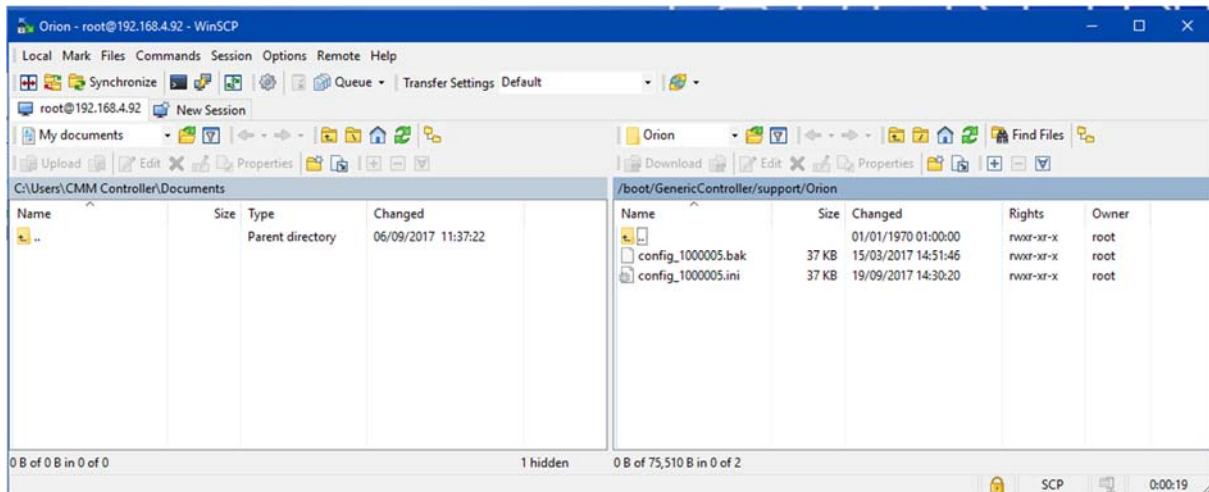
Open the WinSCP folder in the Service Tools folder and run the WinSCP.exe application.



A login window will open. Do not change any of the configuration fields – just click on the Login button at the bottom.



The file explorer for the generic controller pc will open and the right hand section will show the appropriate directory with the config_xxxxxxx.ini file. There will also be a config_xxxxxxx.bak file in the directory.



Right click on the config_xxxxxxx.ini file and delete the file.

Drag and drop the original config_xxxxxxx.ini file from the Service Tools: Backup folder into the right hand section of the generic controller file explorer.

Close the generic controller file explorer window and click OK to close the connection.

Shut down Windows and shut down the generic controller using the blue highlighted button on the right side frame of the Xtreme. Turn off the mains power supply and wait for 30 seconds, then turn the mains power back on. Turn on the generic controller and start Windows.

You have now restored the original factory settings to the Xtreme. You will have to check, and adjust if necessary, the reference sphere position and, if fitted, the change rack position. The position of the tool bars will need to be set to the customers' requirements and you will have to build your probes again. Any customised reporting options will need to be checked and adjusted if necessary.

Once you are happy with the setup and operation of the Xtreme it is advisable to make your own local backup of the current Aberlink folder - C Drive: Program Data: Aberlink - it is suggested you save it in the Service Tools folder - make a new folder and name it with the current date – copy the Aberlink folder into this new folder.