

# Greater Outreach Gazette

## Senator Murdock

Senator Murdock visited in January 2026 to tour the new office space and learn more about the company. We discussed how the company is working on expanding across North and South Carolina, with the goal of bringing community-based care for those in need.



Nyesha Robinson and Senator Murdock



Shannon McCabe, Neice King, Sybil Ingram, and Nyesha Robinson

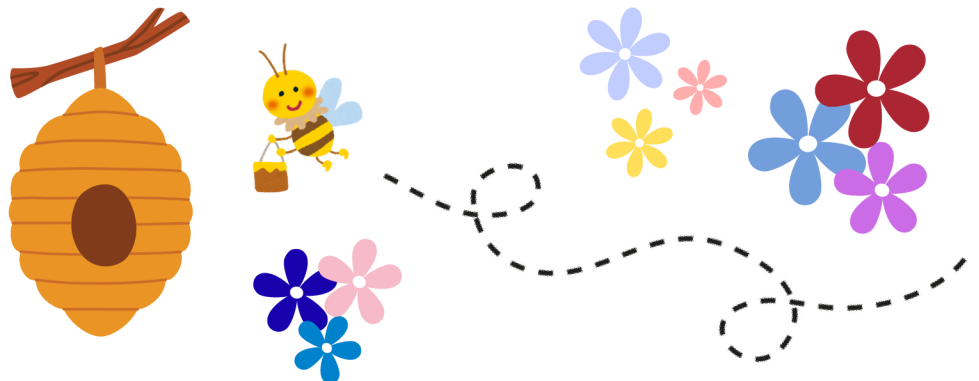


## Honey Camp

Team members participated in a team bee-ilding experience in February. It was hosted by Accesso, the building management company. While learning more about the world of honey, they got to sample specialty honeys and tasting wheels.



Taking notes during Honey Camp



## Easterseals PORT Health Fundraiser

In early March there was the Miracle Moments Luncheon, a signature fundraising event for Easterseals PORT Health. Greater Outreach Services CEO, Nyesha Robinson, attended the fundraiser alongside Representative Carolyn Logan, Representative Robert Reives, and Lobbyist Mia Bailey. Compassionate community leaders of the Triangle raise critical funds and awareness for the life-changing services provided to over 40,000 children, adults, and families with disabilities.



Nyesha Robinson



Rep. Carolyn Logan, Lobbyist Mia Bailey, GOS CEO Nyesha Robinson, and Rep. Robert Reives attending the luncheon



Mia Bailey, Carolyn Logan, and Nyesha Robinson

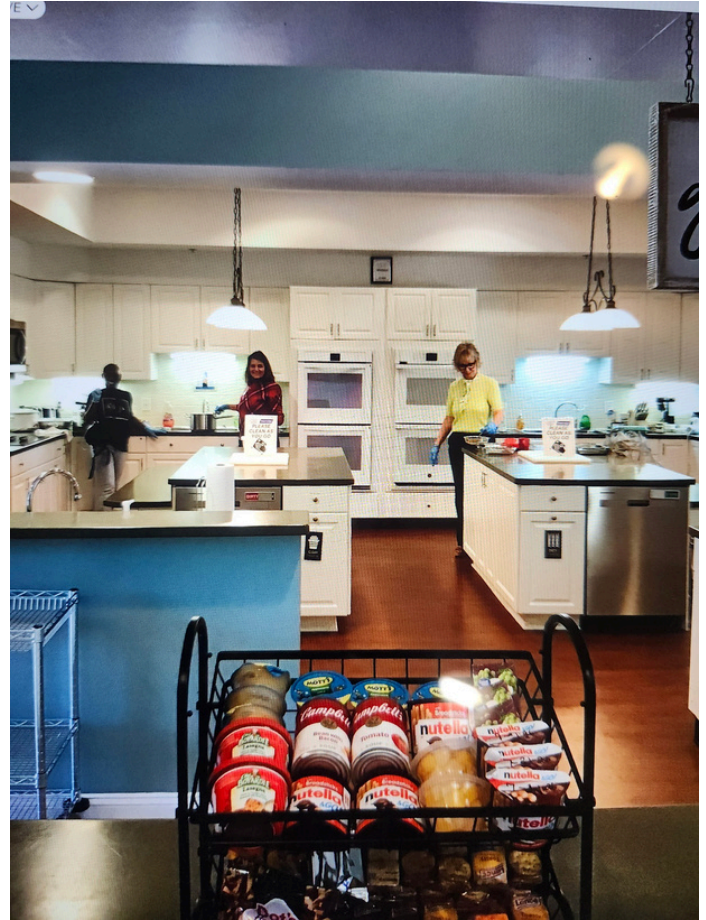


**A SMALL  
DONATION  
MAKES A  
DIFFERENCE**



## ECU Health Lodge

In mid March, Nyesha Robinson donated lunch to the ECU Health Lodge for patients undergoing cancer treatment. The Assistant Director at the lodge is Virginia State University Alumni Dr. Regina Smithwick, who is also a member of the Greater Triangle Area Chapter in the Alumni Association.





*Nyesha Robinson with her NCCPSS students*

## **NCCPSS Class**

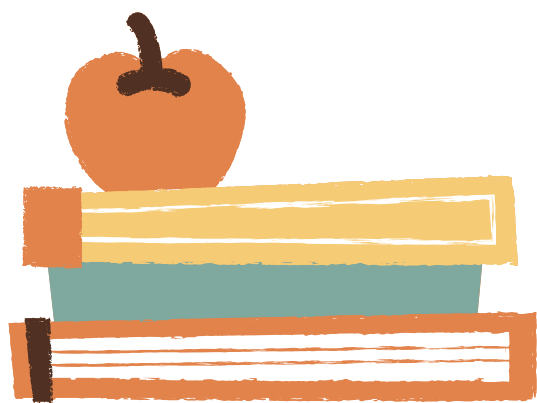
In March 2026, Nyesha Robinson taught a Foundations of Peer Support (Part II) class to a total of 15 students. The week was filled with education and connection. The students worked together to simulate and discuss different scenarios while bonding over shared life experiences. If you are interested in becoming a certified Peer Support Specialist, go to <https://pss.unc.edu/certification> to learn more about the certification process.



*Strike a silly pose for the camera!*

## **NCCPSS Recertification Reminders**

All NC Certified Peer Support Specialists with a **July 2026 certificate expiration date or earlier** can now submit the NC CPSS [recertification application](#) to maintain NC CPSS certification.



Happy April! In the spirit of Spring cleaning, let us engage in clinician self-reflection. Identify areas of burnout or operating on autopilot, reset boundaries, and increase intentional engagement in sessions.

I want to express my sincere gratitude for the work you continue to do. Your dedication to our clients and commitment to ethical, high-quality care are the foundation of Greater Outreach Services.

— Kimani Seryby, Clinical Director

## Food Pantry

Food Pantry Coordinator and Peer Support Representative Sylvia Hamm is working hard to keep the Food Pantry stocked. We have a variety of items, such as rice, canned beans, cookies, sweets, and etc. Currently, clients can request a packed bag of food items twice a month.



## MESSAGE FROM THE CEO

Hello all,

### The Start of the New Quarter

This has been an eventful first quarter. We started the year off with Senator Murdock visiting the new office space in late January. Shortly after, we had our CARF Survey in early February. Thanks to the team's hard work, the NC and SC offices we are awarded another three years re-accreditation. In early March, I attended the Easter Seals Fundraiser to connect and raise awareness with other community leaders of the Triangle. Easter Seals Port Health raises funds and awareness for the life changing services provided to over 40,000 children, adults, and families with disabilities. In mid-March, I donated lunch for cancer patients at ECU Health Lodge. My mom (breast Cancer), grandfather (Prostate cancer), and myself (Thyroid cancer) are all cancer survivors. Thank you to my fellow Virginia State University Alumni Dr Regina Smithwick assistant director at ECU Health Lodge who is also a member of the Greater Triangle Area Chapter in the Alumni Association. In late March, I facilitated the Foundation (Part II) Peer Support Specialist class on behalf of the NCCPSS. 15 amazing students graduated and earned their state certificate for Peer Support Services. We were able to employ 4 new graduates.

### Upcoming Opportunities

In the second quarter of 2026, we are finalizing details on the new office space in Cherokee. I will be facilitating another Foundation (Part II) Peer Support Specialist class in early June. More details are in the flyer attached. I look forward to meeting our next round of students. We are hiring and are always looking for great people to join the team. Please send all job inquires to Neice King.

Thank you all for your hard work. Let's continue this momentum towards the rest of the year.

Best Regards,  
Nyesha Robinson  
CEO/Executive Director

# CERTIFIED PEER SUPPORT TRAINING (PART II)



## Free In-Person Class!



Hosted by the North Carolina Peer Support Board

Location: Greater Outreach Services, Inc.  
<http://www.greateroutreachservices.com>

 Fri. June 5<sup>th</sup> to Sun. June 7<sup>th</sup> &  
Sat. June 13<sup>th</sup> to Sun. June 14<sup>th</sup>

 8AM - 5PM

 2525 Meridian Parkway Suite 50  
Durham, NC 27713

2026		JUNE					
SUN	MON	TUE	WED	THU	FRI	SAT	
	1	2	3	4	5	6	
7	8	9	10	11	12	13	
14	15	16	17	18	19	20	
21	22	23	24	25	26	27	
28	29	30					



**Facilitator: Nyasha Robinson**  
CPSS, QMHP, BS, MSAC, MBA, MWBE

# HOW TO REGISTER



## Register for Certified Peer Support Training - Track A

1. Go to <https://pss.unc.edu/>
2. Create an account
3. Pay a **\$20 application fee (non-refundable)**
4. Open and complete the NCCPSS Track A application requirements
  - a. 20 hours of additional approved training
  - b. Ethics 101 & Boundaries certificates (3 hours, can be part of the 20 hours)
  - c. Upload proof of education (diploma, GED, degree, or official transcript), signed NCCPSS Code of Ethics and two reference letters

## Steps to Register for the In-person Class (Part II)

1. Wait for the NCCPSS to review your NCCPSS Track A application and approve it. If you see the Foundations Part I under 'Courses,' your application has been approved
2. Complete Foundations Part I online (**20 hours**)
3. Download and save your Certificate of Completion. **It must state "Contact Hours: 20.0"** on the certificate for it to count
4. Register for the 40 hour in person class (Part II) by emailing the instructor the following information:
  - a. Name
  - b. Email
  - c. Date of birth (DOB)
  - d. Foundations Part I Certificate
  - e. In-person class dates

### Upcoming In-person Class Dates:

2026		JUNE					
SUN	MON	TUE	WED	THU	FRI	SAT	
	1	2	3	4	5	6	
7	8	9	10	11	12	13	
14	15	16	17	18	19	20	
21	22	23	24	25	26	27	
28	29	30					

### Call for More Information

**Greater Outreach Services:**

Phone: +1 (833) 741-7770

**NCCPSS:**

Email: [nccpssprogram@unc.edu](mailto:nccpssprogram@unc.edu)

Phone: (919) 843-3018