



# The Pantry Door

Published monthly by the Homer Community Food Pantry-March, 2020

## The Coordinator's Corner.


Here we are in the season between seasons. It's a time when freezers begin to run low and yet there are a few months before fishing begins in earnest. It's the season when no vegetables are being harvested, yet the need continues.



Dennis Weidler

Our request is simple. Help to fill the season between seasons. If you have extra frozen protein in the form of

fish, poultry, beef, or pork, the Homer Food Pantry can help to bridge the gap between seasons for our clients.

Like many freezers, ours is looking empty. If you can help with a food donation, bring it by any Monday between 8:30 and 3:00. Thanks in advance. 

## Providing Essential Non-Food Services.




Doug and Nadya assist a client.

There is a great deal more to the Homer Food Pantry than helping to meet the community's nutritional needs. Every Monday from 1 to 3 p.m., Doug and Nadya assist clients with a host of other services. These include gas, shower and laundry vouchers, assistance with electricity, fuel oil, firewood and natural gas, temporary emergency housing and as the referral source for the Homeless

Assistance Program (HAP) administered through South Peninsula Haven House.

The Food Pantry has also helped clients with travel by land, sea and air to and from Homer, the rental of a moving van, prescriptions and even camping gear and auto parts.

Appointments are scheduled with a call or text to 235-1968 during the week prior. Or, send an email to [homerfoodpantry@gmail.com](mailto:homerfoodpantry@gmail.com). 

## A Special Thanks...

...to the kitchen staff at the Homer Food Pantry.

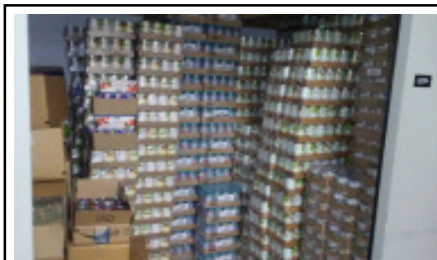
Each week, they prepare a delicious lunch for the volunteers, and package dozens of takeout meals for the Food Pantry clients.

Hats off to the kitchen team!

## Thank You, Top Shelf.

When Safeway calls to pick up several pallets of donated food...with more on the way...where do you put it?


The Homer Food Pantry quickly realized that the two sheds, Thomas' garage and the existing unit donated by Top Shelf would simply not be enough.



Just one of the Top Shelf storage units.

A call to Top Shelf and our challenge was solved.

Thanks to their support, a larger storage unit had just become available and we could use it for as

long as we had a need. Thank you, Top Shelf Storage! It is only through this type of selfless support that the Homer Food Pantry can function. 

*Providing food and emergency assistance, with compassion, to those seeking our services.*

770 East End Road, Homer, Alaska 99603 907-235-1968 text or voice [homerfoodpantry@gmail.com](mailto:homerfoodpantry@gmail.com)