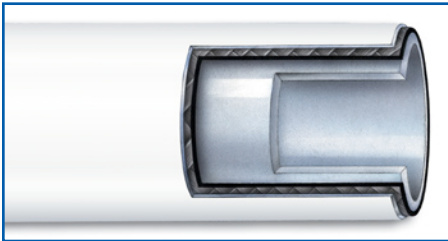


SMOOTH BORE FEP/PFA/PTFE HOSE

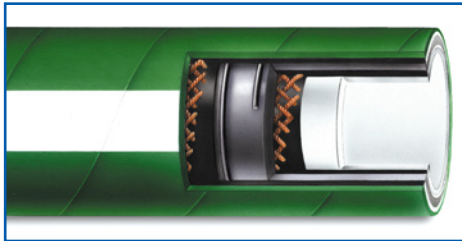
Rubber Fab offers a full line of flexible smooth bore FEP, PFA and PTFE lined sanitary hoses for Pharmaceutical, Food and Beverage, and Industrial applications.

NEW FROM RUBBER FAB



RF-SF

SUPREME-FLEX: Smooth Bore PTFE with Silicone Outer Cover



RF-RTP

Smooth Bore Heavy Wall PTFE Lined EPDM Covered Hose



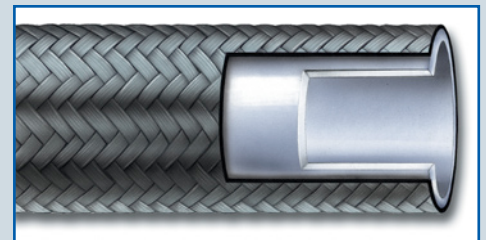
RF-XF

X-TREME FLEX: Smooth Bore PFA Lined Hose with Stainless Steel Outer Braid



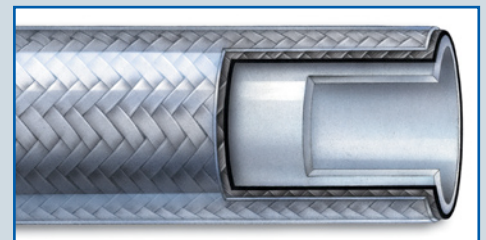
RF-RT

Smooth Bore FEP Lined EPDM Covered Hose



RF-ST / RF-STB

Smooth Bore PTFE or Black Conductive PTFE Lined Hose with Braided Stainless Steel Cover



RF-STs / RF-STSB

Smooth Bore PTFE or Black Conductive PTFE Lined Hose with Braided Stainless Steel Outer and Silicone Cover

RUBBER FAB
technologies group

www.rubberfab.com

RF-RT – Smooth Bore FEP Lined EPDM Covered Hose

TUBE:
Seamless White FEP

COVER:
EPDM Rubber
(Abrasion resistant and oil resistant)

REINFORCEMENT:
Fabric reinforced with dual wire helix

TEMPERATURE:
-40°F to 300°F



Part Number	I.D.	O.D.	Working Pressure*	Vacuum (In. Hg)	Minimum Bend Radius
08RFRT	.500	.970	500 psi	29.9	2.5"
12RFRT	.750	1.27	500 psi	29.9	2.5"
16RFRT	1.00	1.48	400 psi	29.9	3.0"
24RFRT	1.50	2.04	350 psi	29.9	4.5"
32RFRT	2.00	2.54	300 psi	29.9	7.0"
40RFRT	2.50	3.04	200 psi	29.9	9.0"
48RFRT	3.00	3.82	200 psi	29.9	14.0"
64RFRT	4.00	4.92	150 psi	29.9	20.0"

*at 68°F

Also available with White Outer Cover

RF-RTP – Smooth Bore Heavy Wall PTFE Lined EPDM Covered Hose

TUBE:
Heavy Wall Seamless PTFE

COVER:
EPDM Rubber
(Abrasion resistant and oil resistant)

REINFORCEMENT:
Fabric reinforced with dual wire helix

TEMPERATURE:
-40°F to 300°F



Part Number	I.D.	O.D.	Working Pressure*	Vacuum @ 70°F	Minimum Bend Radius
08RF RTP	.525	1.12	500 psi	29.9	3.0"
12RF RTP	.775	1.38	500 psi	29.9	4.5"
16RF RTP	1.02	1.65	400 psi	29.9	7.0"
24RF RTP	1.51	2.15	350 psi	29.9	13.0"
32RF RTP	2.01	2.67	300 psi	29.9	18.0"

*at 68°F

RF-RTPB – Smooth Bore Black Conductive PTFE Lined EPDM Covered Hose

TUBE:
Heavy Wall Black Conductive PTFE

COVER:
EPDM Rubber
(Abrasion resistant and oil resistant)

REINFORCEMENT:
Fabric reinforced with dual wire helix

TEMPERATURE:
-40°F to 300°F



Please refer to RF-RTP for I.D., O.D., Working Pressure and Bend Radius specifications.

RF-RT

RF-RT Meets

- 3A Sanitary Standard
- USP Class VI
- FDA 21 CFR 17.1550
- FDA 21 CFR 17.2600
- USDA

Features

- Extremely flexible
- Excellent kink resistance
- Superior bend radius and shape retention
- Full vacuum service
- Cleanable by CIP and COP methods
- Resistant to ozone, chemical and abrasion

RF-RTP

Meets

- 3A Sanitary Standard
- USP Class VI
- FDA 21 CFR 17.1550
- FDA 21 CFR 17.2600
- USDA

Features

- Heavy wall PTFE liner provides good permeation resistance compared to thinner lined FEP hoses
- Better stress crack resistance than FEP lined hoses
- Cleanable by CIP, SIP and COP methods
- Excellent kink resistance
- Superior bend radius and shape retention
- Full vacuum service
- Resistant to ozone, chemical and abrasion

Applications

- Pharmaceutical processing
- Chemical transfer
- Hot CIP solutions
- Distillery piping systems
- Fluid transfer
- Food and beverage
- Load cells
- Cosmetics

Connections

- Broad variety of fittings in 316L Stainless Steel
- PTFE encapsulated
- Kynar®/PVDF and other non-metallic materials
- Electropolished Stainless Steel fittings available
- Crimped fittings available in other high quality alloys

Kynar® is a registered trademark of Arkema Inc.

RUBBER FAB
technologies group

www.rubberfab.com

RF-XF – Smooth Bore PFA Lined Hose with Stainless Steel Outer Braid



TUBE:

Smoothbore PFA Tube

REINFORCEMENT LAYERS:

- 1: Bonded Wire Braid
- 2: Silicone
- 3: Textile Braided Composite

COVER:

Braided Stainless Steel (Standard)

Braided Red Kynar® (Optional)†

TEMPERATURE:

-65°F to 325°F

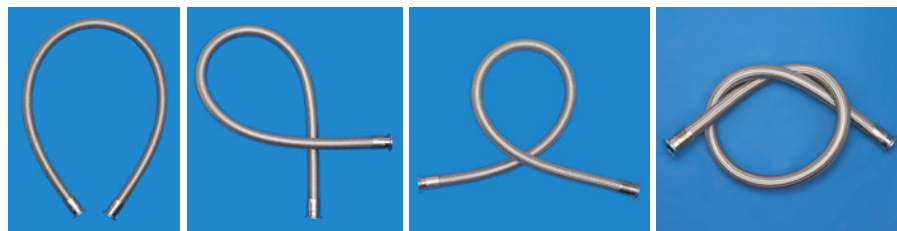
Part Number	I.D.	O.D.	Working Pressure*	Minimum Bend Radius
06RFXF	.375	.625	300 psi	2"
08RFXF	.500	.755	300 psi	2.5"
12RFXF	.750	1.04	250 psi	3"
16RFXF	1.00	1.29	250 psi	4"
24RFXF	1.50	1.85	200 psi	7"

*at 68°F

† Consult factory for Kynar® temperature ratings.

Also Available: Silicone outer cover. Consult factory for details.

**RF-XF IS:
X-TREME
FLEX**



RF-XF

Approvals

- 3A Sanitary Standard
- FDA 21 CFR 177.1550
- U.S.P. Class VI

Features

- Smoothbore PFA Fluoropolymer lined hose
- Superior Flexibility
- Superior Kink Resistance
- Half the minimum bend radius of conventional smoothbore products
- Full Vacuum Rated
- Autoclavable
- Steam Cleanable at stated temperature/pressure ratings
- Stainless Steel reinforced

Applications

- Food & Beverage processing
- Chemical transfer
- Pharmaceutical processing
- Hot CIP solutions

RF-SF

Approvals

- 3A Sanitary Standard
- FDA 21 CFR 177.1550
- U.S.P. Class VI
- USDA

Features

- High pressure rating
- Superior flexibility
- High temperature rating
- Excellent chemical resistance
- Autoclavable
- Full vacuum
- Hose will not impart taste or odor
- Silicone cover acts as insulator

Applications

- Load cell
- CIP/SIP systems
- Bulk transfer
- Filling equipment
- Sampling systems
- Fermentation lines
- Food and beverage processing
- Chemical transfer
- Pharmaceutical processing

Connections

- Broad variety of fittings in 316L Stainless Steel
- PTFE encapsulated
- Electropolished Stainless Steel fittings available
- Crimped fittings available in other high quality alloys

RF-SF – Smooth Bore PTFE Lined Hose with Silicone Outer Cover

TUBE:

Seamless White PTFE

REINFORCEMENT:

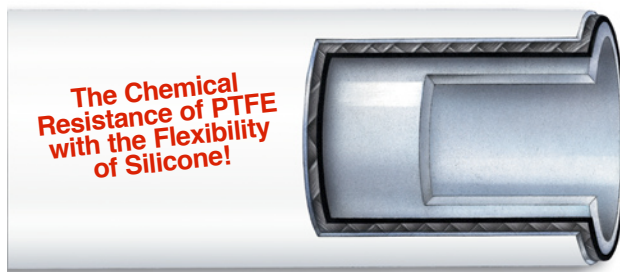
304 Stainless Steel Braid

COVER:

White Silicone

TEMPERATURE:

-100°F to 500°F



Part Number	I.D.	O.D.	Working Pressure*	Burst Pressure*	Bend Radius	Vacuum*
04RFSF	.250	.490	3250 psi	13,000	1.5"	29.9
06RFSF	.375	.610	2500 psi	10,000	2"	29.9
08RFSF	.500	.760	2000 psi	8000	3"	29.9

*at 68°F



**RF-SF IS:
SUPREME-FLEX**

RF-ST – Smooth Bore PTFE Lined Hose with Braided Stainless Steel Cover

TUBE:

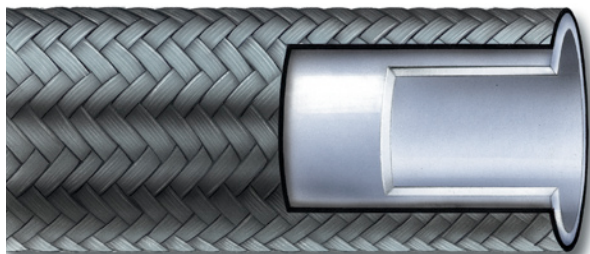
Seamless White PTFE

COVER:

Braided Stainless Steel

TEMPERATURE:

-100°F to 450°F



Part Number	I.D.	O.D.	Working Pressure*	Minimum Bend Radius
04RFST	.250	.370	3000 psi	3.0"
06RFST	.375	.515	2000 psi	5.0"
08RFST	.500	.633	1425 psi	6.5"
12RFST	.750	.875	1000 psi	8.5"
16RFST	1.00	1.19	1000 psi	12.0"
24RFST	1.50	1.76	1000 psi	14.0"

*at 68°F

ALSO AVAILABLE: **RF-STB** – Smooth Bore Black Conductive PTFE Lined Hose with Braided Stainless Steel Cover

RF-STs – Smooth Bore PTFE Lined Hose with Braided Stainless Steel Outer and Silicone Cover

TUBE:

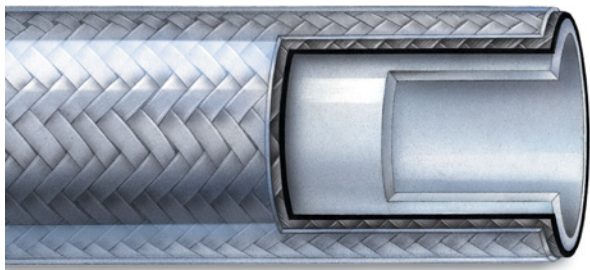
Seamless White PTFE

COVER:

Braided Stainless Steel and Silicone Outer Cover

TEMPERATURE:

-100°F to 450°F



Part Number	I.D.	O.D.	Working Pressure*	Minimum Bend Radius
04RFSTs	.250	.432	3000 psi	3.0"
06RFSTs	.375	.577	2000 psi	5.0"
08RFSTs	.500	.664	1425 psi	6.5"
12RFSTs	.750	.937	1000 psi	8.5"
16RFSTs	1.00	1.25	1000 psi	12.0"
24RFSTs	1.50	1.82	1000 psi	14.0"

*at 68°F

ALSO AVAILABLE: **RF-STBS** – Smooth Bore Black Conductive PTFE Lined Hose with Braided Stainless Steel Outer and Silicone Cover

RUBBER FAB OFFERS A FULL LINE OF: SANITARY FITTINGS, ADAPTERS AND GASKETS



RF-ST RF-STs

Meets

- 3A Sanitary Standard
- USP Class VI
- FDA 21 CFR 17.1550

Features

- Non-stick contact surface will not contaminate contacted substances
- Withstands high velocity and pressure surges
- Autoclavable
- Available in bulk or fabricated assemblies
- Full vacuum

Applications

- Food processing
- Pharmaceutical processing
- Cosmetics
- Hot CIP solutions
- Chemical products
- Low pressure steam applications

Connections

- Broad variety of fittings in 316L Stainless Steel
- PTFE encapsulated
- Electropolished Stainless Steel fittings available
- Crimped fittings available in other high quality alloys

RUBBER FAB
technologies group

Rubber Fab Technologies Group

26 Brookfield Drive • Sparta, NJ 07871
phone: 973-579-2959 • fax: 973-579-7275

www.rubberfab.com

Rubber Fab Technologies Group is a member of:

