

mODULe pHIVe



In this module you will
Learn to read the tarot for yourself
Understand it in its wholeness
Be infected by its simplicity

As you learn to use and develop your relationship with the

TAROT

You will be infected by the Enlightenvirus

The virus that enlightens

An infection by light

We call Inspiration

You have been introduced to the Script Writer, the Director, the Actor and the Producer
of your own life Movie.

You have discovered that you have an artful limitlessness in scriptwriting your
Never Ending Story

You are able to design attitudes that will win you the prize of the
Limitlessmile

You have become familiar with the

Four Magic Tools

You have seen a simple formula to
Simplify, Minimalize, Visualize and Materialize
Your wildest dreams and fantasy's

You will come to know the mechanics of the organic process of enlightenment
The aligning of your cleverness with your dreaming

Our bodies are a set of gauges upon a cosmic dashboard, allowing us the ability to measure and gauge our mind in action, to see its growth and evolution and power. It is an instrument with which we may interact with the solid physical realm; it is an antenna tuning us to the dreaming, the cosmic life force; the mystical side of life. The action of the unfolding of our life creates a resonance, a sound, a mantra, that echoes through space and time. The [four part] harmony and rhythm between our cleverness in using the four magical tools, and our ability to tune to the dreaming, will have the sound of our life somewhere between a song and a screech. As we zoom along we could well do with the assistance of an intermediary, a focusing agent and interpreter, whose function is to assist in the process of finding wholeness, and feeling purpose and destiny.

This agent of the mystical side of life is the Tarot.

Limitlessmile presents a unique view of an ancient tool of western
aboriginality

If you are interested in the improvement and enhancement of your life, agree that belief is any guiding principle that provides meaning and passion, then the tarot is the objective tool that when used in a business like manner will guide the seeker toward the prize, or the realization that what is being sought may in fact be no prize at all. This innocent looking pack of cards has many roles, the parent of our modern playing pack, a vehicle for clairvoyants and psychics to see the unformed world of their questioners. It is also a handbook to understand our self, our universe, our world, our cultures and our life.

The following adventure of seeking understanding of the tarot is a guide only, as the unique individuality, we are as humans, allows that there will be as many interpretations of the essence of the symbols of the tarot, as there are interpreters. The tarot is a living tool, a structure to shape your own personal meanings; my definitions are coloured by my perceptions, understandings and desires. In this Limitlessmile adventure we seek to capture an idea that a mechanical structure exists within the Tarot and it represents a base line from where we may understand our universe and our part within it. What will be presented is a simplistic view, as simplicity is power, a concentration of energy. Simplicity hides in the obvious, we are all potentially blind to the obvious.

In this Limitlessmile adventure so far you have been following a theme that has had you explore and view your life and its structures through the opposites and the elements. We have used this model of the universe as a means to apprehend understanding and meaning of our human condition. What you have done so far working in the modules of Limitlessmile has had you working within the structure of the tarot, and so now you are already familiar with this amazing tool.

The Tarot is an ancient tool arriving for our human use from the foggy mists of ancient pasts. Debate of its origin range from it emerging as recently as the middle ages in Europe, to being a mystical tool handed to us from Egypt, or maybe handed to Egypt from Atlantis and then kept alive and moving in the form and structure of our modern playing cards, and also with the Gypsies and their legendry gifts of fortune telling. It has suffered much slander through the last centuries as the organizations of control have feared its simple self-empowering truths and have not understood its clarity. Ego illusion is the greatest obstacle to seeing into the simple truths that the Tarot present like geometry. It amalgamates the timeless wisdoms of Astrology, Numerology, the Elements and the Kabala [the ancient Hebrew mystical tradition]

The tarot is most popularly known as a tool of fortune telling or divination, which is not what we are seeking to do. There are hazards involved when doing a psychic reading of the tarot for yourself, to employ that function of the magic of the pack you are best to read for a complete stranger. Reading psychically for your self or a friend has you subjectively

involved in the reading and at risk of being biased in the interpretation. The self-reading we will explore is an exercise for us to be objective, an assistant to our meditative view of our self and our adventure. Reflecting upon our self as a description and being separate, sitting in the director seat and observing the actor and it's actions and expressions. The cards in this type of lay, offers ideas about our quests and drama's that we may not of other wise found. It is not telling us something or other is going to happen, but offers reflection of what something is. In this application it is a tool of insight not a tool of prediction. A ready reckoner to gain insight into the questions that arise, and the decisions of directions we negotiate day to day. You will be responsible for collecting and assigning the individual meanings for your cards, all we are looking into with Limitlessmile is a structure to fit it all into, and know what goes where and how it relates to our life and our journey.

The Tarot is a pack of 78 cards, comprising two sections, the minor and the major arkana or keys. The minor arkana are available for our inspection any time as our household variety pack of playing cards. Four suits of ten cards--the four elements, and the court cards, king queen and jack---the description of our psychic nature.

Air	Phire	Water	Earth
Swords	Wands	Cups	Discs
Spades	Clubs	Hearts	Diamonds

There are plenty of books around to allow you much info on collecting the meanings for your cards, their history and the many different spreads and lays. In Limitlessmile it is your personal relationship with your pack and its reflection of insights into your life we are going to explore. Limitlessmile will share a simple method of use and means of reflection, and from there you may wish to explore further, and like the yoga, you may see this as a tool that once in your life may always be there, using it passively as an interest and an enjoyment, becoming more a power to you as the years go by.

How it works, no one really knows but it does and will continue to amaze you the more you

work with it. We each have in our lives our own unique ways to know something, and symbols for the meaning of things...If you had a thousand people in a crowd watching you on the stage and you said Dog, each and every one would immediately understand what you have just said, the essence in meaning would be the same for all, though in each and every being there would be a different image and feeling come to mind.

You are the hero of your journey and in the tarot it is the fool that represents us the questioner, we are the divine fool within our romantic adventure of mystical proportions. How we will look at the big picture of the tarot and where we relate to is simply this, take your standard tarot pack of 78 cards, separate them into the suits ace to ten, the court cards king/queens/prince/princess, (the Tarot has the princess's as extra court cards to the household playing cards) and then the 22 trump cards, fool through to universe.

Lay them out like this to have an over all view-- place the fool card down as the centre, place above the fool the separated minor cards ace to ten in their suits wands/ swords/ cups and discs, these are the four magic tools the fool has to use to shape reality. Below or behind lay the court cards, in four rows of four, the knights or warriors or princes in the front row, the kings or tribal elders in the next row, the queens or earth mothers next, and then the princess's or children. In a circle around the whole lot lay the 21 major arkana, 1 to 21 with the 11, lust or strength card at the apex above the fool. (In some packs strength and justice are in different positions numerically) See diagram at end of module!

Look down upon the cards and see the fool is centre to the whole scheme, as you your self, from your view point, are centre to your universe. Before the fool is the four suits, swords, wands, cups and discs, the four magical tools, or the four elements that we have before us to use and shape to make our wildest dreams. Behind the fool are laid out the court cards, the reflection of the psychology of the fool, reflection of the knowledge and understanding won from the clever use of the four magical tools, a psychological structure forever changing in relation to the dance with life. In most tarot interpretations the court cards relate to people in life, and the people in our lives are reflections of parts of us, and holders of pieces of the puzzle of our mystery. Further on we will explore this aspect in more detail.

Surrounding the laid out scheme is the circle of the 21 major trump cards the essence of the balanced opposites, displayed and defined in symbols, the higher universal teachings based in cosmic law. When scientists put on their coats and peer into the atom, and explore sub atomic world of quantum physics they describe there existing form with no substance, this form is the laws of geometry expressed in every form, and divine truth preserved in sacred geometry and Vedic maths. We are unable to know directly the essence of these magic keys, though we may be infected by our minds interaction with the geometry and symbology found upon the cards.

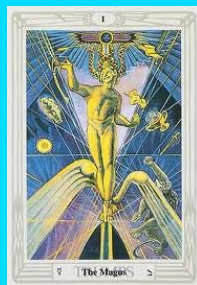
We as beings are yin and yang, we are left and right brained and it is these gendered aspects of our individual beingness that skries meaning and purpose from the magic and mystery of sacred geometry and symbology, the language of depth. Sacred Geometry and symbols have a very real affect upon our beingness. Our right brain feminine captures impressions of shape and the feelings of what we have met in the forms of the sacred geometry and symbology. These impressions sit with us and activate our instincts and ponders of what is, what if. Our left side masculine beingness analyses and deciphers, reasons and deducts in accord with the other facts of our existence held in our memory banks. Between these genders of our personal beingness we may achieve balanced union or we may express imbalanced prejudice. In our living world we see the affects of patriarchy, male dominated rule of religiosities and governance, we may ponder also situations of matriarchial imbalance. All these external situations are reflective lessons for our own personal developing of balanced union of our gendered beingness.

Let us go for a quick browse and look at some simple meaning. The 78 cards represent an assembly of values, it is up to us to give them meaning and application. Following is my interpretation of the trumps; you may wish to define them differently. In previous modules we have used gauges to measure certain aspects of our being, using the numbers 1 to 21. now go back and see what number you choose in each of those exercises and see which trump card aligns. What insight may the cards lend?

A Quick Story of the Fools Journey



The fool [value of humour] is us, the querant, and finds self in a vast and limitless universe. The Fools immediate contact to the universe is through the senses, they give the feedback that existence exists and there exists pleasure and pain, joy and suffering in relation to the actions employed, in the use of the four magical tools, the elements. The fool seeks to participate in the abundance, and upon entry into the adventure is guided by the first key of the major arkana the



Magician {value of cleverness} -card number one, unity or the message that self is alone in this journey, and it is the masculine energy the purposeful use of power, to activate cleverness, reason and rationality, the element air that interprets the information received from the senses and then calculates the decisions that will lead toward the preference of pleasure over pain, joy over suffering. To go beyond what is and reach into

what is not yet, the fool needs to extend to the outer reaches of imagination into the deepest depths of the dreaming



High priestess [value of the dreaming], the powerful absorbing engulfing feminine, all consuming, limitless possibilities of the dreaming, the trying ground of all possibilities where it is safe to imagine and explore all scenarios and ramifications of ideas in the safety of the inner infinity before employing them. The fool brings into this realm of the pure feminine, the feedback from the senses and the reason of the magician and is then infected by the possibilities of the dreaming, and once they are all mixed up together has the



Empress [value of inspiration]—impregnated with inspiration and insight and ideas, gestating the unformed as a mother in child and passing it to the



Emperor [value of order]-- to embark upon the action of manifestation,; bringing form and order, and then initiating the action, toward the desired outcome. To then rule and command available resource toward the vision born of the depths of the dreaming. The fool as emperor requires having blessing to activate with out inhibition and without doubt. For this he seeks counsel of the



Hierophant [value of nobility]—[being noble is characterized by having high moral qualities, being magnanimous, generous, dignified, and illustrious] the fool learns to find the inner teacher, the importance of having intuition, as the guide to find what is of value and appropriate from the limitlessness of the dreaming, without which confusion would reign and no decision could be enacted as all would seem as worthy as the next. The bringing into form and order that which was found in the dreaming [High priestess], by the power of reason and inquiry and deduction [Magician] Gestated and finding form [Empress] is initiated and finds form with the [Emperor], who after council of the inner teacher [Hierophant] may act decisively and the Fool enters the position of feeling the resolve to attack and initiate without inhibition as the inner voice and the outer action are in total agreement, and have become a unity, a going beyond the opposites and feeling the power of love, the ultimate union of opposites



Lovers [value of love]—is the key where the fool learns of the power of love as the unity within, to be and feel whole and beyond the poles of opposites, a whole that is greater than its parts, the ready reckoner we have for this key is the realm of falling in love, our training ground to know and experience this inherent human power which may be employed deliberately toward our each and every act in life,. The power of the sum being greater than its parts, a dynamic duo being as one, and ready to tackle all

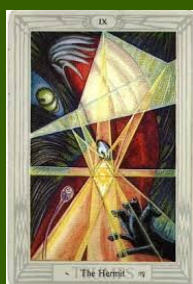


Chariot [value of courage]—the fool armed with the power of love is equipped to embark upon any Quest, feeling the love, and then pursue the action of cultivating and activating the Warrior's Mood.



Adjustment [value of balance] {or justice in some packs, also in some packs strength holds this 8th position and justice lives at position 11, in Limitlessmile we will follow the scheme of adjustment or balance in this position, The Crowley Pack has made this change to honour having entered the new age, other packs wear perspective of looking toward the new age, crowley updated perspective of being in the new age. We the human in the stone age of aquarius}

To find and maintain Equilibrium is the message for the Fool in this Key, to be conscious of the laws of cause and effect, to be cognizant of the laws of karma, that the middle path is a process of continually reconciling differences, to know what are our duties and responsibilities, to finish all we start and to honour all we initiate. Balance is to maintain the centre, to tread the middle path to not indulge in the good, to not indulge in the bad, and to know that the law of perpetual motion is the equal and opposite use of contrary forces.



The Hermit [value of self-reflection]—to be comfortable in our aloneness, to be able to find our inner space to see what it is we are doing in relation to the larger picture and have the power to decide if in fact we want to initiate some certain action, to embark upon a cause and effect, to initiate a new karma, a new duty or responsibility. The lantern held out by the hermit is his inner light of ethic looking for the good in the external infinity. To see the good in all, to be able to meditate and find peace within, to find our centre to know and decide weather or not we will spin the



Wheel of Fortune [value of abundance]---if centre you be and peace you see, it is safe to initiate, to spin the wheel and see where it takes us, once action is initiated then we are to be involved with the unfolding, if all the previous keys have been employed then the new action, or decision can be leapt into completely, as we know it is exactly what we are wanting to be, have or do. The wheel in another perspective is the cycle of our life adventure from beginning to end and with courage and awareness we may will to the available fortune of having existed.



Lust [value of limitlessness]—to leap in completely, to live to the fullest with out regard to outcome, as the fool has been prepared for as well as one can in the limitless potentials offered once the wheel has been spun. The power of lust is to indulge completely and harvest the richest feedback possible from the senses, and the content of the adventure, intensely, immediately, and fill to the top.



Hanged Man [value of work---value of melancholy]---limbo, neither now in the world of the senses, or in the world of spiritual insight. Digesting all that has been won for the adventure, to go through the remorse and regrets of decisions poorly made and to acknowledge all that is a revelation, the values that will be hung onto and built upon the work that may be done to continue. All else once digested needs to be eliminated, to be let go of and released back to the cosmos, it generally represents a time of sad melancholy, and energy of unavoidable focus.



Death [value of detachment]—the end of the usefulness of some thing, it is let go of and returned to the cosmos, eliminated from the system so the system may move on in to the new, death is an ending and detachment, from all that no longer serves, whether it is a situation, a relationship or even our body. Living is to dying, as sleeping is to waking, as remembering is to forgetting. The mystery of life draws what it requires from reality, digests it, assimilates it and then returns the waste back, just like the consumption of our foods and the elimination of our waste; The throwing off of gravity.



Art [value of sensitivity]—after the dust settles from the eliminations of death and the fool can see what is left, and is initiated into the impermanence of life and learns the deeper lessons of equilibrium. The art of accounting for all that is available, acknowledging actuality and synthesizing all that has been experienced. The power of detachment allows the fool to know that death is a friend and a service allowing the moving on into the wildest dreams, free from gravity, with a whole new array of possibilities and abilities, having to some degree gone beyond the conditionings of life and found new power. Art is to do the best you can with what you have where ever you happen to be.



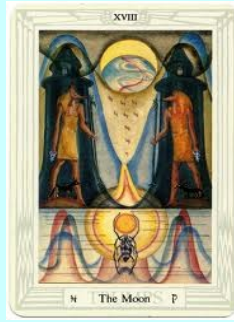
Devil [value of doubt]—the only difference between good and evil is a decision. Evil is the reverse of live and any thing that is effectively anti life is effectively evil, the situation of ignorance and being hypnotized by illusion are the messages for the fool from the devil. So many possibilities are missed and much abundance is not collected merely due to the ideas, attitudes and opinions held by the fool. Ego self-importance and ignorance are the body of the devil, when the fool is caught within anti-life. The opposite of God is Goddess; the devil is merely an aspect of their nature



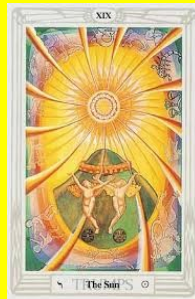
Tower [value of ruthlessness]—the shedding of all that would block or hide the truth, and impede the access to the dreams. To ruthlessly destroy all that stands in the way, that has life cloistered to ignorance or illusion, the fool learns to trust that some things need to be deliberately eliminated.



Star [value of wonder]—the inflowing of limitless light, once the walls of ignorance have been razed to the ground. The fool learns the need of going into darkness to be able to see the stars, the cosmos in all its glory, to enter the darkness of the inner self to find the hidden beauty and revelation of I-ness, a clarity of vision and the clarity of mind. The lesson of the star is to meditate to develop the muscles of looking within beyond the structures of ego and personality, to view and wonder at the purity of nature and seek our own purity in our naturalness. Where ever our inner light shines there will be shadows



Moon [value of objectivity]-- we are stars of our own movie, our never-ending story shining much further than any imagined end. The work is perpetual in looking into the shadows within, probing and testing all our opinions and attitudes that are the features of our mindscape, and our limits in pursuing our dreams. Moon is realization that all the darkness we find within ourselves is our own and may be dissipated as easily as does a light removes darkness. Though the imagined bogey men whom we create, and have live in the shadows, may be bravely marched past, to explore the unknown, the dark and the scary, all our limitless aspects.



Sun [value of joy]—it is easy and it is difficult, this key has the message for the fool that to remember how to see the universe through the eyes of the divine child, to dream, devour, express and play is the simplest course of action to pursue. To just be in every moment, behold wonder and have expectation of abundance and joy.



Aeon [value of judgment]— to discriminate-with and feel beyond the universe and be aware that forever stretches out infinitely both sides of us, into the past, into the future. Its message is that every moment is a new beginning a new start anew Aeon, time spans are infinite, and time operates differently in the solid universe to its operation in eternity, when you have felt your eternity your destiny is found.



Universe [value of wholeness]—the ultimate wholeness, to be and feel at one with the universe, the fruit of the fools journey, to return home to the self and return back to the adventure of the journey, always coming back to the beginning. To stay at home and never go out is stifling, to never come home is exhausting.

If It Is To Be, It Is Up To Me

Every thought, every action flows through the process of the fools journey, from the smallest thought to the whole of a life, these symbols plot an unfolding, and allow clever guess as to where we are. The magic of the cards and the mystery of our mind when consulted with honesty empower reason and allows clever guess as to our unfoldment.

The amazing adventure of using the four magical tools is largely done by trail and error, reason, rationality, memory, and guesswork. We do have the faculty of intuition and conscience, the direct channels of communication we have with our inner mystery, they also are like muscles and the more they are used the stronger they will become. According to many writers in the area of tarot and astrology the tool of tarot or astrology are the perfect gym for developing and strengthening these very essential muscles.

For the Limitlessmile card lay, it is a lay of personal reflection, to allow us to view symbols of the instruments upon the dashboard of the mystery of our life. Now you have the ability to use and interpret the cards in your own unique way, also to create your own personal lays for the cards, if it were a musical instrument you would learn a few tunes of others while you develop your own skill and style, before exploring your own way, likewise with the tarot. The lay for Limitlessmile is set up like you would for any other lay with your cards. Have them in your hands; feel them bring you into the moment, your mind armed with what ever may be the dominant thought forms for that part of your life adventure at that point in time.

Shuffle and shuffle, and if it is your style, cut when you have come to the point of wanting to lay. Select some cards and having them face up install them upon the dashboard of your life. The lay out described earlier has us able to look at three definite areas of our reality. You will have court cards that in this lay belong in the department of pointing out psychology, what you are learning and understanding, where your mind is at in relation and reflection to its use of the four magical tools. There will be ace to ten cards in the four suits representing the elements, or a message in regard to what you are doing in your use of the four magic tools. The major cards offer infection of idea and inspiration, they are called major cards as they relate to the major issues of our life and to the bigger picture.

The four suits will be familiar to you as they have been our guides through the four

modules so far in Limitlessmile. What does the card say? We are all different and will have many different packs of cards to use as our guides, and many ways of relating to our cards, our each and every life is unique and completely different, but at a certain level we are all completely the same, and it is this fundamental basic sameness that the tarot displays as ground zero, the same structure, the same cosmic law that applies to any human who sits and peers within, who uses the mystery and magick of the tarot as a tool to reflect and feel more.

Swords are the power of the intellect in action, purposeful use of power, the ability to cut through to the bones of things with the sword of truth, to penetrate and to know, to apply effort to think. This doesn't necessarily mean that there will be good done or bad, only that there is a purposeful use of the power of thought; its direction is your free will decision and has limitless potential in either direction.

Wands are the fire element, action momentum to do, to be, to have, to make, to create, to follow through on the thought, you may be wondering which came first the chicken or the egg, thought or the action... in this description the thought seeks action into the solid, the thought reaches into dreaming then seeks to earth or manifest with desire, the decisive act, of do, of get, of need, of feel, of have.

Cups are the feelings and emotions of the course of the extension of the thought entered, into time and space, the entering into third dimension, as the thought travels toward its eventual materialization it feeds back information as a gauge on the dashboard, a means to avoid pain or suffering and to steer toward pleasure and joy. To speed up or to slow down, the element water as we have mentioned in earlier module is the brakes and accelerator of our life, Fire we said was the motor, air is where we want to go and earth is where we end up (this deserves grave thought).

Discs are the thought become solid and are symbolic of external physical reality. They represent our spirits relationship with health, possessions, finances, poverty and abundance.

THE COURT CARDS

For the court cards we will use the analogy of a tribe of earth mother natives to describe to us the workings of our mind in its wholeness. A simplistic overview. And now to add some confusion we are going to change a position of one of our characters. In module one to four we employed the warrior to represent the element of fire and to give image to its meanings, now in the court cards the warrior will give image to the air and the tribal elders will give image to fire.

Lets look at the tribe in relation to the elements as we have through all modules, the front line of the tribe is its warriors or hunters, they are responsible for the protection and survival of the tribe, they are the frontline of interaction with the landscape, defending the tribe from attack and hunting in search of food to feed and ensure survival. The warriors may wear the right mood to succeed in their duties and to ensure their own survival when in the frontline, which then assures the survival of the whole tribe.

Directly behind the warriors is the power of the tribal elder's, whose wisdom and insight give power to the warriors, gives them direction and are in fact the raw material of the warriors, an extension of them, as they themselves where once warriors. They are the holders of the history, they represent the continuance of all who had gone before, and hold the bigger picture. They are the inspiration of the warriors to continue to serve. The elders are the second line in the defence of the tribe in the face of the landscape.

Next are the earth mother's they are the third line. They have their back toward the front of reality as they may focus upon the delicate task of producing the perpetual source of new beings, the future warriors who will keep the whole system going, their task is to be fertile, a rich source of nurture and love, which will bring into existence the whole and empowered, next warriors.

Then there are the children, the delicate and sacred fruit of the tribe, who require to be protected from the rigors of reality, to enjoy as much as possible insulation during their years of innocence, so they may explore, imagine, dream and play, into their fullest development.

4 magic tools-	AIR	FIRE	WATER	EARTH
Warriors Air	Focus Create	Decisive Vision	Feedback Desire	Activate Determine
Elders Fire	Straegise	Commit	Connect	Motivate
Earth Mothers Water	Formulate	Enactment	Nurture	Participate
Children Earth	Dream	Devour	Express	Play

Within the structure of the story of our tribe and its functions lies a simplistic view of how our mind might work in its wholeness, and also how far removed we are in modern life from our fundamental organic truths of how we may exist together as a whole.

The Warriors are the Air element, our thoughts and ideas, our thinking and our reason, set off into the coalface of reality to seek information and find feedback from all that can be encountered. The immediate, pragmatic interplay with all that is. They are the thoughts and ideas we have about ourselves; and the description we are as Ego.

The Tribal Elders represent all that has been experienced previously and digested, and forms the structure of truth and wisdom and common sense which will be the desire and motivation [Fire] behind the thoughts and thinking entering the arena of reality... The cleverness air and the motivation fire reach into and are drawn toward the fertile image grounds of the dreaming, pushing evermore into the great unknown. It is the stored knowledge or memory we have of the universe that feeds our desires, by knowing your world you come to know what else you want, and the foundation of the actions we direct into our world.

Earth mothers are where limitless possibilities are found, nurtured and brought into the process of manifestation, the earth mothers have the awesome task of teaching and passing on what the feminine energy truly is, total love. As love they see and recognize emotional need, and show how to love oneself and to love others, and the power of deep emotional bond. For the earth mothers it is no task to teach love as they are love, their real challenge is to be able to set up their sacred space to create and nurture with the challenges of conditional love, the love where there is contract and exchange with the demands of the masculine. If the challenges are met harmoniously then the security of the sacred space is guaranteed and they then may comfortably turn their backs toward the face of reality, leaving the work of supply and protection to the masculine, so they may get on with the job of creating and loving the babies.

Children the new and untried, innocent thoughts and ideas, are the playful divine child that lays at the very heart of us all, the pure essence of who we truly are, delicate and fragile, full of fun and wonder, rich in innocent imaginings of limitless possibilities. In many writings there is mention of the inner divine child within us all. In psychology the trials and troubles we were challenged with in our own childhood shapes the way we are able to access and express our divinity, the gentle child like way of seeing and approaching our universe. The Fool in the tarot wears the magic aura of the child, walking innocently into the universe, fully expectant of great and amazing things, not thinking about how they will be or how it will happen, but merely going toward them to capture and behold.

So here we have in the Limitlessmile card lay an idea of where the divine fool has come from, straight from the arms of love, truly a child of the earth mother, earthly agent of the goddess, the universal feminine and the power of love. For us in our own life we may reflect upon the arms of love we have come from, and the learnt attitudes toward how we find and apply the energy of love to life and universe.

Our warrior is a divine child who needs to wear the mask of ego so to have protection and advantage in the dealings with the coalface of reality. Ego is our intellectual description of whom we think and believe we are, motivated by the passions and attitudes of our heart. Which maybe open and have its unconditional energy flowing organically ever upward to nourish and empower our human expression, our inner vision and our connection to the absolute [our feelings of being a real connected part of the universe]. Or our heart may have a closed or restricted flow that wells up and flows straight back into nature without making any connection to the universe or the wholeness of the structure we are all a part of. Flowing straight back into nature seeing it all only as a thing to have and control and possess and have our perceptions and vision dominated by the four major desires, sex, food, fame and fortune. Our heart when closed finds us forever mindlessly

plundering and grasping for some illusive fulfilment.

The heart full of attitudes is fertilized by the richness of our dreaming and as such is amplified in its desires, they manifest as a nurturing embrace of reality or a quest to take and indulge, either way they are limitless.

Lets throw in some astrology

This putting in of the signs of the zodiac serves two purposes, one to allow a deeper insight into the qualities of the tribe members, and two to have another way to understand the signs of the zodiac. There is another use to which we may employ this simple grid. The use of the cards in this Limitlessmile adventure is for self-reflection, to explore and capture ideas about our self and our life that we otherwise may not have had, a gymnasium to exercise the muscles of our Intuition and our Conscience.

The people in your life have a birthday and have also a star sign, In a holistic view of our life the people of our life are each a reflection of who we are, place all the important or significant people of your life in the square of the grid that is their star sign. Particularly any people that may push your buttons annoy or upset you. Each of these people may help to give insight into the essence of the members of the Tribe that combined represent a holistic overview of your mind. This is another quick and simplistic way to employ the mechanics of metaphysics to glean an insight into our mystery.

	Air	Fire	Water	Earth
Warriors	Aquarius	Leo	Scorpio	Taurus

Elders	Gemini	Sagittarius	Pisces	Virgo
E/Mothers	Libra	Aries	Cancer	Capricorn
Children	Air	Fire	Water	Earth

Lay out the court cards, there are sixteen of them; the first row is the Warriors [knights or prince], the brave protectors and the energy that deals with reality as we find it. Within the row there is four warriors, a warrior of swords, one of wands one of cups and one of discs, They represent the warriors wearing a fourfold mood with which to deal with reality, let us colour the description with the astrological attributes. [I have drawn these astrological definitions from—Key Words for Astrology—by Hajo Banzhaf & Anna Haebler—ISBN-0-87728-875-5 excellent resource]

WARRIORS

The Warrior of Swords--is Aquarius, individuality, originality and a hunger for knowledge, the Aquarian task is to over throw the old and bring innovation, to be very imaginative and inventive. Uranus is the ruler of Aquarius, and as such is related to the Trump 0 Fool.

The Warrior of Wands—is Leo is the supremely confident person, with a vital optimism. The truly great rulers and leaders, for them life is a stage and they like to be the showman. Leo is related to the Trump 11 Lust

The Warrior of Cups—is Scorpio---extreme and intense are the words for the warrior in this spot, Scorpions are drawn to explore the very depths of everything, to go to the edge, to break taboo's to know the secrets. Scorpio is related to the Trump 13 Death.

The Warrior of Discs—is Taurus---the warrior of earth is the farmer, shepherds protectors and preservers, the energy that nurtures and brings things to their fruition. Practical down to earth and decisive; Taurus is about rooted ness and great inertia; Great stubbornness to persevere, determination. Taurus is related to the Trump 5 Hierophant.

The next row is the Tribal Elders [kings], they are the force behind the warriors and also have within their ranks representation and expression of the four elements, both the air [warriors] and fire [tribal elders] are masculine penetrating energies that reach into the coalface of reality with the purposeful effort of power and are offensive in their nature, they are the force in the tribe that deals with the demands of nature, human nature and the nature of reality, where as the earth mothers deal with the creation of something new made up from the elements of nature, an automatic action of force.

TRIBAL ELDERS

Elders of Swords--- Gemini, the great thinkers and the universal scholars, they like to take up new thoughts and pass them on, great traders and agents. Able to analyse precisely, smart quick and clever. Gemini is related to Trump 6 Lovers.

Elders of Wands---Sagittarius the preacher and evangelist, the search for meaning, strive for ideals and justice and religious conviction. Can inspire and motivate, with high and holy feelings, dynamic purpose and motivation, inspiration and enthusiasm. Sagittarius is related to Trump 14 Art.

Elders of Cups--Pisces the peacemaker and spiritual advisor, the medium, boundless sympathy, strongly instinctive, prophetic. Pisces is related to Trump 18 Moon.

Elders of Discs—Virgo, the craftsman, the joy of details, critically examining everything for its suitability, efficiency and economy. Seeking all that is optimal, and advising the differences between what is useful and what is pointless. Virgo is related to Trump 9 Hermit

EARTH MOTHERS

Earth Mother of Swords—Libra—creating of harmony, maintaining it and enjoying it, their task is to bring beauty in to the world and to apply and install harmony into all forms of art and design and particularly close inter personal relationships, like friendship, marriage and partnerships. Libra is the sign of the artist, the aesthetic and the peacemaker and mediator. As the earth mother, Libra has the quality of willingness to make compromise, always oriented toward the other person. Libra is related to Trump 8 Balance

Earth Mother of Wands—Aries—is the awakening of the forces, development of the ego and the asserting of one's own will and conquering the world. In the traditional astrological attributes this sign represents great energy, spontaneous, impulsive, uncomplicated, direct, spirited, light hearted and dynamic, the very qualities useful in the massive task and responsibility the Earth Mothers invest into the sacred fruit of the tribe. Aries is related to Trump 4 Emperor

Earth Mother of Cups-- Cancer—the very image of the Mother and expresser of unconditional love., and the domain of cancer is the family, and the tasks in life are the establishing of emotional bonds and expressing deep feelings. Great capability for feeling other peoples desires and thoughts and reacting to them, deep understanding of the concerns of the soul. Cancer is related to Trump 7 Chariot

Earth Mother of Discs—Capricorn—the feeling of responsibility, resolutely representing law and order, principles and standards. Faithfulness discipline, sense of duty, work with patience and resilient persistence to dutifully fulfil the tasks they have assumed and bring them to completion. Clear mind, serious soul, great common sense, loyal, reliable and very responsible. Capricorn is related to Trump 15 Devil

CHILDREN

The Children [or in other packs the princesses] are the Divine Child in us all, and they represent the Earth line in the 16-card grid we are studying. This earth element is the manifested fruit of the combined efforts of all the rest of the tribe, is the solid physical manifestation of a thought or idea that requires our attention, responsibility and nurture for its successful balancing. These cards don't have a sign assigned to them as such, as they are new and as yet immature and represent the generic element of the line above them. This means they embody the essence of the three cards above them, the princess of swords embodies all the potencies of Aquarius/Gemini and Libra, and are very similar to the aces which represent the raw essence of their particular element..

The spirit of anything can not really be measured, it may be acknowledged and noticed if missing, there are a number of deeply spiritual experiences that modern man identifies with, and they are usually described as the Christ or the Buddha, the most pure and overlooked receptacle for, and expression of, pure spirit is our babies, they allow direct innocent connection to a reflection of our spirit and also a direct reflective example in the developing expression of the spirit that we are.

Children of Swords ----the air of earth is the pure act of limitless dreams, raw avenging force of the intellect, which finds guided tempering during innocence

Children of Wands ---the fire of earth is the pure desire to explore and devour all, the raw explosive force of fire

Children of Cups --- the water of earth is the pure uninhibited expression to allow and let the whole universe know exactly what you feel, uninhibited imagination.

Children of Discs --- earth of earth is the timeless adventure of play.. Uninhibited manifestation

Summary

So let us recap with a simplistic overview, a means to grab a super simple reference to how our psychology works mechanically in its wholeness. At the heart of our wildest dreams and fantasy's are we, the divine child, Children- pure in imagining, uninhibited in desire and expression and seeking the timeless adventure of playing the life that is ours, we are nurtured within by our

Earth Mother energy of fertile unconditional nurture and limitless patience, We are protected by our

Tribal Elder whose plans and strategies, reason, and purpose connect us with feeling and purposeful endeavour to inspire, motivate and enthuse us into the coalface of reality

Warriors- We are the ego warrior masks, the intellectual description of our warrior, whose quest is to penetrate reality, to wrestle paradigms, and harvest information, leap decisively, taste and have feedback to know and understand and persist, endure, determine and survive.

How to use the pack in the dashboard lay

After having shuffled and found twelve cards, sort them out and place them on their appropriate places upon the scheme of the dashboard. Any ace to ten cards that arrives among your twelve cards place upon the magic tool piles. Place any court card in their positions of the grid, and any major cards about the edge where a circle may be surrounding the whole lot.

Look to see what minor card you have and reflect upon the message of element, which magic tool are you employing at the moment in your journey, why has it shown up upon the dashboard? As you grow and develop your relationship with each and every card of the tarot you will come to know them all as individuals, and like characters in your life, you may have feelings for some and not for others. The best way to capture meaning for the cards is to just use them, and as you journey along, information and books will happen and

your unique understandings and perceptions will grow and be your own. There are no rules, it is a tool and you may use it in many ways. Though like any tool if it is not applied correctly it may not only be inefficient, it may also harm.

So you have maybe some minor cards giving you insight into your daily use of the four magic tools. These cards are numbered 1 to 10, and represent through numerology the course of the thought or idea, act or manifestation. Following the raw essence in the ace, through to a final outcome or creation in the ten. Interpretation of the cards will differ from person to person and in Limitlessmile I seek to keep it all super simple, so I will by not entering in to individual card descriptions.

The court cards are the reflection of who we are becoming, the living changing mindscape of our psyche. The cards in this dashboard lay, that are court cards, offer us reflection of the things we need to be aware of in our attitudes and opinions, ways of being, and ways of receiving reality. In the simplistic over view we had the warriors as the ego face pushing into reality, the elders as the fruit of experience in motivation and plan to do and to act, the earth mothers are our heartfelt creations, are our ability to nurture, to reflect and to heal our selves and those with whom we share life.

The line of the child is where we find our own divine inner child; the cards here are messages about how we are dreaming devouring expressing and playing. The children are like the aces the raw potential of the elements, though more pure and more innocent.

The major arkana messages relate to things we need to know about the bigger picture, the major lessons of being in a life, from birth to death, each major card is a potent symbol which speaks straight to our heart and soul beyond the confines of words and language, and intellectuality. This is why it is important to use and use the muscles of intuition and conscience, to make them strong enough to harvest the deep and fruity meanings we may learn to see in the symbols within our own personal individual, romantic adventures.



Dashboard spread

Limitlessmile

And so endeth this Limitlessmile course for now, I plan to keep the whole course as a living document, which means of course that I plan to continue to add and edit the modules as time goes by and inspiration is forthcoming.

May this five-part adventure in self-reflection be a power and joy to your life as the years of journey in Limitlessmile's compilation and creation has been a joy and inspiration for myself.

May you enjoy the discovery that after having gone thru all the notions in this book carefully and thoroughly, only to find life is completely and deliciously different to any thing you read.

THANK YOU

**LIFE IS A PUZZLE SEEKING TO BE SOLVED FOR
GREAT REWARD**