



ARMORED  
**COUGAR 1-LAMV**

**PRESENTATION**

# WHO WE ARE ?

- Established in Canada in 1992
- World's leading privately owned armored vehicles manufacturer
- We are the leading provider of security solutions with 100% safety records; our vehicles are deployed by armed forces all over the world
- We produce a large variety of Armored Personnel Carriers, MRAP's, Cash-in-Transit, Luxury, Bespoke Luxury and Security vehicles which are designed to provide effective protection in high-risk situations
- Most trusted and reliable manufacturers of armored vehicles



# WHY CHOOSE US ?



Presence in four major **global** regions:  
Middle East, Africa,  
Asia & CIS



24 years of  
war zone  
**experience**



More than 1000 vehicles  
in **stock** at any  
given time



**Variety** of more  
than 120 vehicle models



12  
**Production**  
facilities



World-wide  
**logistics**  
support 24/7



Internationally recognized  
**certifications**  
STANAG 3 and  
VPAM BRV 2009 VR7



More than 10,000  
vehicles in active service  
**around the world**



Production capacity  
Up to **300 vehicle**  
per month



Global sales, **service**  
& **support** network



Exclusive service centre unit  
for more than **70 APC**  
vehicle purchase



Limited armor conversion  
**warranty** packages



**STREIT GROUP**  
WWW.ARMORED-CARS.COM

## ARMORED **COUGAR 1-LAMV**

Cougar 1 is a small, agile and very capable Armored Personal Carrier with an outstanding on and off road capacity. Designed for high mobility operations, both urban and rural, Cougar can carry a crew of 8, a driver and commander with 6 deployable dismounts. The vehicle is available with standard equipment such as run-flats, air conditioning and 2 point door locks. Optional equipment comprise of recovery winches, towing pintle and ballistic glass protection. Cougar offers a cost effective and reliable platform for a troop carrier. The vehicle can be fitted with a turret, capable of mounting up to a 12.7mm MG. A variety of customer specific remote weapon station can also be added as optional equipment.



# SEATING LAYOUT & DIMENSIONS

DRIVING ORIENTATION

LEFT & RIGHT OPTION



SEAT: 8=2+6



# TECHNICAL SPECIFICATIONS



## ARMORED COUGAR 1-LAMV

### Dimension

Length	5352 mm
Width	2030 mm
Height	2114 mm
Wheelbase	3180 mm
Ground Clearance	235 mm
Seats	8= 2 + 6

### Engine

Engine Type	4.0 L V6 Petrol 4.8 L V8 Diesel
Power Output	196 hp at 2000 rpm
Engine Torque	573 Nm at 8600 rpm
Fuel Tank Capacity	93+45L

### Weight

Curb Weight	kg
Payload Capacity	kg
Combat Weight (GVW)	kg

### Drive-line & Suspensions

Wheel Drive	4 wheel drive
Transfer case	2-speed
Differential Locks	TORSEN Limited slip center Differential
Brakes	Ventilated disks front & rear
Steering	Power assisted
Suspension	Front - independent double wishbone with coil springs, shock absorbers and anti-roll bar, Rear - four link with coil springs, shock absorbers, Pan hard rod and anti-roll bar
Tires	285/70R17

### Protection Level

Ballistic protection	BF6/BR6
Blast protection	2 X DM51

### Electrical System

Voltage and current	12 V, 100 A
---------------------	-------------

### Transmission

Gearbox	OEM 5-speed Manual
---------	--------------------

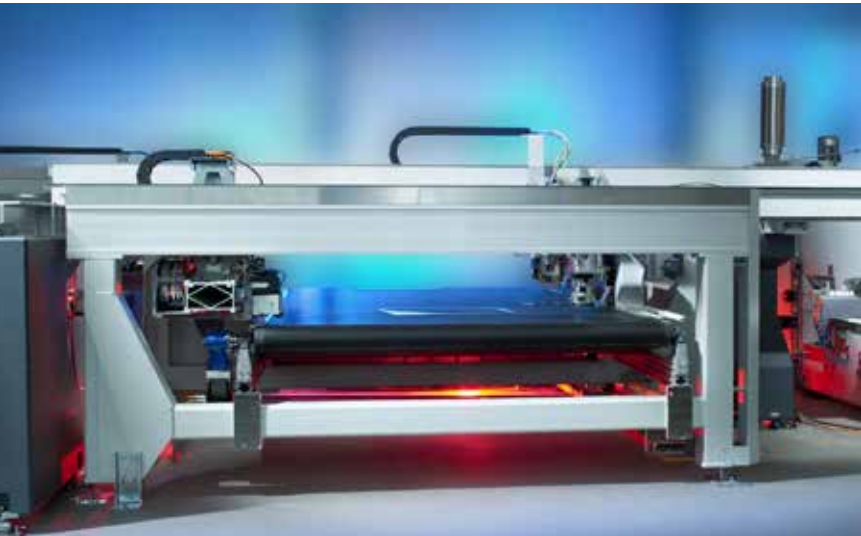
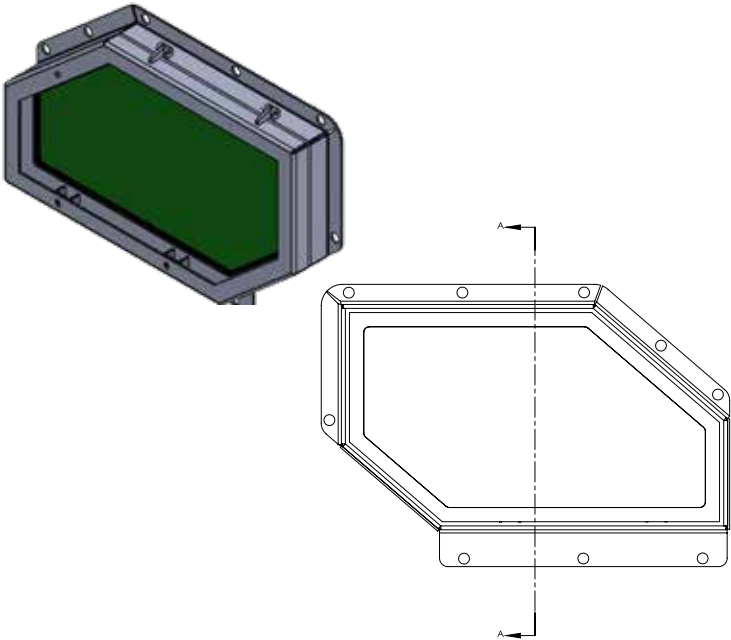
### Performance

Max. Speed	110 km/h
Approach Angle	42°
Departure Angle	34°
Gradient	60%
Side slope	30%
Turning Radius	7.8 m
Vertical step	0.3 m
Fording depth (without kit)	0.7 m
Fuel range	900 km
Power to weight ratio	41.3 hp/ton

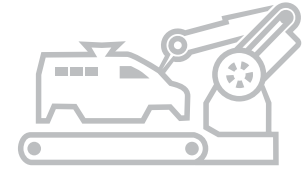
### Options

Ballistic protection upgrade to BF7/ BR7
Blast protection upgrade to DM-31
4.5L V8 Diesel engine (in RHD Configuration only)
Ambulance package
Upgraded brake system
Snorkel
Central (back-to-back) seating
Heavy Duty Alternator
Search lights
Double door at the rear

# BALLISTIC PROTECTION STEEL & GLASS



# COUGAR PRODUCTION

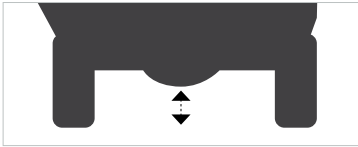
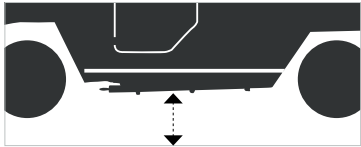




# GROUND CLEARANCE & FEATURES

## Ground Clearances

Body Clearance	320 mm
Axle Clearance	235 mm



HD Hinges



Firing Port



2030 mm

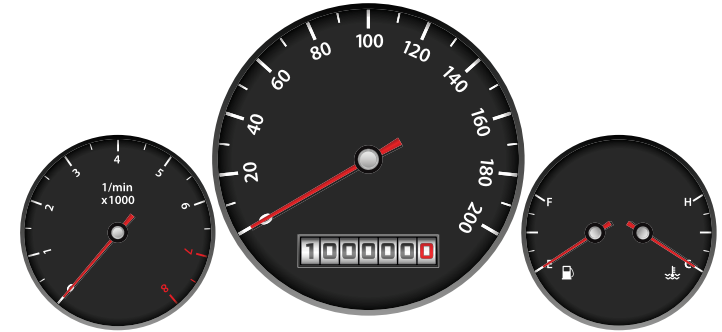
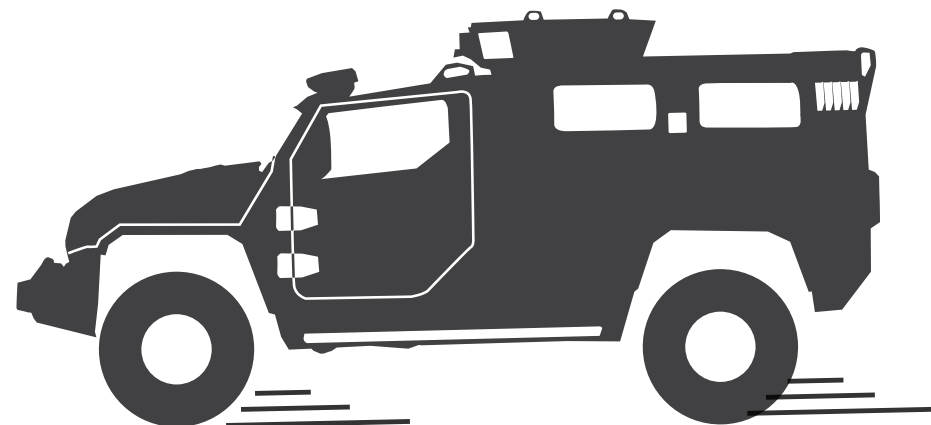
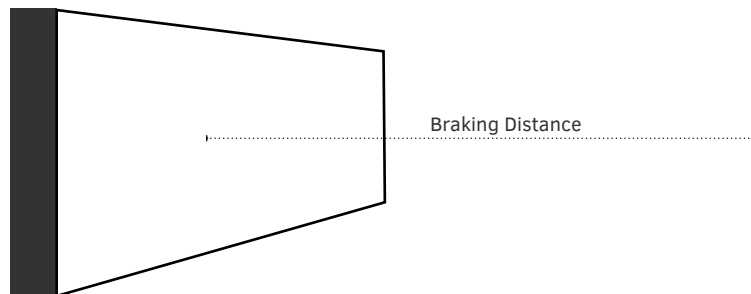
# ACCELERATION & BRAKING REPORT

Acceleration Test Report	4.0 L	4.5 L
00 – 60 km/h	9.34 Sec	8.52 Sec
00 – 100 km/h	21.62 Sec	17.90 Sec
20 – 40 km/h	4.17 Sec	4.10 Sec
40 – 60 km/h	4.98 Sec	4.58 Sec
60 – 80 km/h	7.32 Sec	6.25 Sec
80 – 100 km/h	12.07 Sec	7.10 Sec

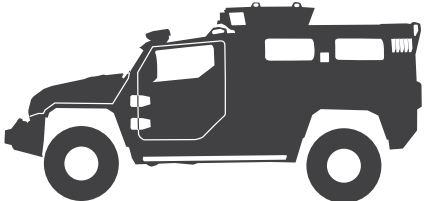
## Brake Test Report

60 – 00 km/h	19.6 m	19.6 m
100 – 00 km/h	28.5 m	28.5 m

Testing was done with a full compliment of men consisting of 2 + 8 men (Total 10)



# G-FORCE

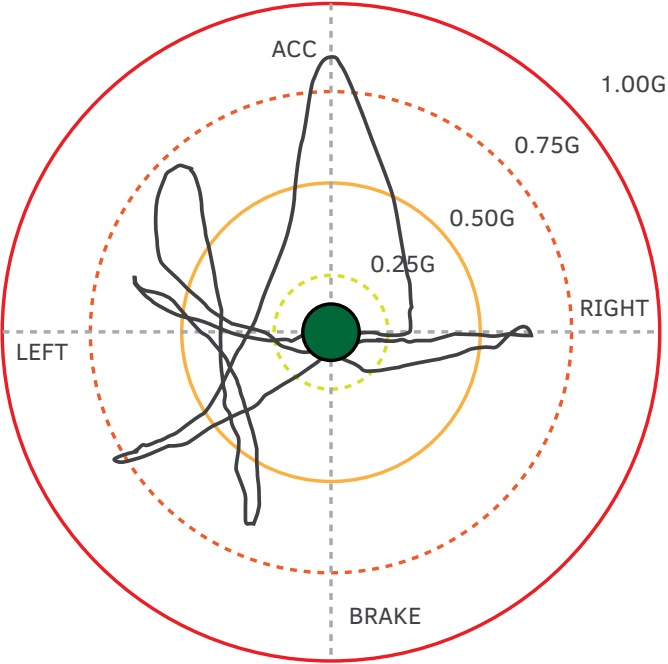


### On Road

Acceleration	0.35	Max G
Brake	0.96	Max G
Turning	0.75	Max G

### On Gravel Road

Acceleration	0.25	Max G
Brake	0.55	Max G
Turning	0.75	Max G



# STEP APPROACH REPORT

## Approach Hight

Max Forward Step Approach

300 mm



## Departure Hight

Max Reverse Step Approach

300 mm



# DRIVING ANGLES REPORT

## Approach Angle

Max Approach Angle

42°

## Departure Angle

Max Departure Angle

34°



# DRIVING ANGLES REPORT

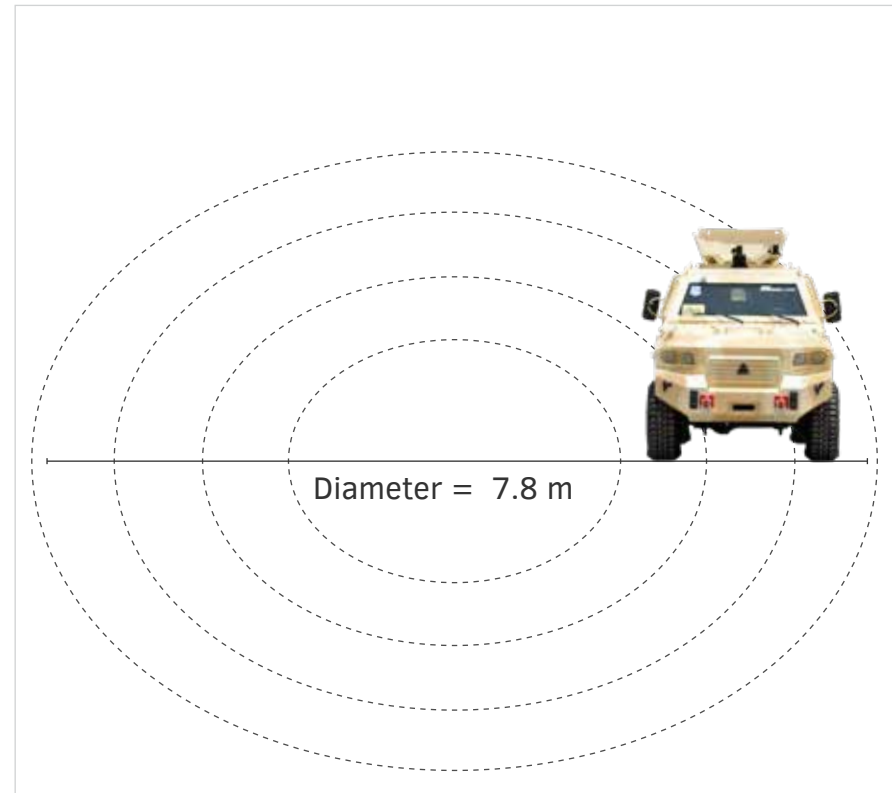
## Maximum Angle of Lateral Inclination

Angle of Inclination	34°
----------------------	-----



## Turning Radius

Turning Radius	7.8 meter
----------------	-----------



**ENGINEERED TO THE DETAILS**  
**DESIGNED TO CONQUER ANY SURFACE**



# ADDITIONAL ACCESSORIES

Military Gas Mask

**K3**



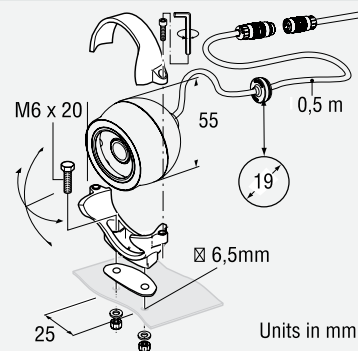
DVR System

**D-TEG MICRO DVR**



IR LED Cameras

**IR LED CAM 69 / 118**



Smoke Grenade Launchers







**STREIT GROUP**  
WWW.ARMORED-CARS.COM

OUR COMPANY  
SHIELDS YOU

360° SECURITY  
SOLUTION

**STREIT VEHICLE SERVING AROUND THE WORLD**  
OUR VEHICLES HAVE SURVIVED COUNTLESS ATTACKS  
& SAVED MANY LIVES OVER THE YEARS



**THANK YOU !**