

Announcements:

Next General Meeting Fairport at “The Church of the Assumption” 20 East Avenue, Fairport, 14450.

7:00 pm: April 3rd, 2023, First Monday.

Build Nights: Thursdays Seabreeze Bill Gray’s 5:00 to 9:00

Upcoming Contest and Shows [Check for events <https://calendar.ipmsusa3.org/all-events>]:

March

- RepLICon 31 [<http://www.lisms-ipms.org/>], March 25, 2023, hosted by IPMS Long Island Scale Modelers Society, Freeport Recreation Center, 130 E. Merrick Road, Freeport, NY, 11520.
- TRICon 2023 [<https://calendar.ipmsusa3.org/event/tricon-2023>], March 25, 2023, hosted by IPMS Three Rivers Chapter, A.W. Beattie Career Center 9600 Babcock Blvd, Allison Park, PA, 15101
- HeritageCon 15 [<https://heritagecon.com/index.html>], March 26, 2023, hosted by IPMS Hamilton Modellers Club, the Canadian Warplane Heritage Museum, Hamilton, Ontario, Canada.
- Valleycon 32 [<http://www.wvmodelclub.org/>], March 26, 2023, hosted by IPMS Wings & Wheels Modelers Chapter, Knights of Columbus 460 Granby Rd, Chicopee, MA, 01020

April

- MosquitoCon [<http://www.nijipms.org/>], April 1, 2023, hosted by IPMS New Jersey Chapter, Wayne PAL, 1 PAL Drive, Wayne, NJ, 07470.
- BuffCon 38 [<http://ipmsniagarafrontier.com/Buffcon2023/index.html>], April 2, 2023, hosted by IPMS Niagara Frontier Chapter, Justin & Columbus Hall, 2735 Union Rd., Cheektowaga, NY, 14227.
- DowneastCon 2023 [<https://calendar.ipmsusa3.org/chapter/ipmssouthern-maine-scale-modelers>], April 16, 2023, hosted by IPMS Southern Maine Scale Modelers Chapter, Sanford Memorial Gym 678 Main Street, Sanford, ME, 04083.
- Noreastcon 2023 [<http://www.ipmsneny.org/>], April 29, 2023, hosted by IPMS Northeast New York Chapter, Polish Community Center 225 Washington Avenue Extension, Albany, NY, 12205.

May

- NorthshoreCon 2023 [<https://northshorescalemodelers.org/>], May 6, 2023, hosted by IPMS Northshore Scale Modelers Chapter, Knights of Columbus 96 Main Street, Peabody, MA, 01960
- Wrightcon 2023 [[IPMS Wright-Field-Scale-Modelers](#)] **CANCELLED** May 6, 2023, hosted by IPMS Wright Field Scale Modelers, Hope Conference Center, Dayton, Dayton, Wright Patterson AAFB, OH, 45371.

Upcoming Club Events

June 5, 2023: Jerry Rinaldi group build of Monogram and Revell US and German aircraft kits.

CORRECTION: There are two categories. Out of the Box, except for decal changes, awarded \$25 Performance Hobbies gift card for 1st place. The second category is Unlimited which permits aftermarket items, anything goes which has three awards with 1st receiving \$100 gift card, 2nd receiving \$50 gift

card, and 3rd receiving \$25 gift card with all gift cards to Performance Hobby. The editor apologizes for any confusion on these rules and award.

July 2023: Penfield Library Display organized by Pete Leas. Three glass shelves of 40x40x11 inches.

August 6, 2023: NY Museum of Transportation interactive display with build tables for patrons on tours.

General Meeting:

Attendance: 22. Voting: 22.

Guest: Jerry Trippe, John’s brother and an aircraft Stick and Tissue builder

New Members: None

Topics/Agenda for Next Meeting: Open

President Comments – Ken Brent:



Someone left bunches of models with the Irondequoit Library who contacted us about them. There are 63 models. John and Ken have gone through the collection and found some good for the raffle. We will try to sell the others.

New Jersey IPMS has eliminated Out of the Box category. This category has become complicated which can mean more emotional for participants as kits get release with photo etch and resin parts as part of the baseline kit. IPMS Nationals handles the subject with a Box Standard that is just plastic and is modifying the rules to be clear and explicit that instructions from the kit are required. Kits with resin and photo etch, native to the kit, go to the open class. <https://ipmsusa.org/about/national-contest-committee/ipmsusa-competition-handbook>

Vice Presidents Comments – Cliff Wiley:



None

Treasurer Comments – Dave Schwab:



Treasury Checking: \$. Remove before public posting.

IPMS Members – please be sure Dave has your member number for our club charter.

Region 1 Business – Dave Schwab [<https://calendar.ipmsusa3.org/region/region-1-northeast>]:

NOREASTCON will be one day in Albany. April 29th, 2023. For 2024 we are considered on the fringe of the region for a one-day event.

ROCON 41:

RAFFLE: So far we have some major donations: John Trippe donating a new airbrush. Jerry Rinaldi is donating a 1/200th scale titanium with lighting kit and detail kit brass, 200 pieces, and wooden decks. Jerry will also be including some kits he picks up from Ollies.

General Discussion:

Contest and Show Report: None.

Member News: This is a new section of the minutes. I need to capture images of a few members.

Public Display Opportunities:

Penfield Library: As mentioned Pete Leas has arranged for the Penfield library display case in July for the club. It is in the atrium of the building. Three glass shelves of 40x40x11 inches.

NY Museum of Transportation: Upcoming August 6th. See December Minutes for more information.

Club Challenges and Group Builds:

See Upcoming Club Events

SHOW AND TELL – Photos by Neil Farukhi.

Cliff Wiley



Cliff says he has been obsessed with modern German Armor. He has a new kit of the Bergepanzer BPz3 “Buffalo” Armor Recovery Vehicle (ARV). It is based on the Leopard 2 chassis and can hoist a Leopard 2 turret. Heavier tanks like the Leopard 2 require upgraded support hardware and recovery vehicles so any new tanks are a larger program than just the battle tanks. Cliff built the “Buffalo” before out of resin from Perfect Scale Modellbau. The Hobby Boss kit has the same detail as Perfect Scale and a full detailed interior. Cliff will light up the interior and open the hatches. The tracks are the high end assembly type giving Cliff some trouble as too much coffee causes shaking during track building.



Phil Pucher

The Panzerjäger-Triebwagen 51, an Armored Railway car. This is the culmination of four months of work. Phil's next build will be a Revell F-89 Scorpion with no figure, simple, and single color.

The Panzerjäger-Triebwagen 51 was intended for the eastern part of Europe in WWII for anti-partisan activities but was late to the conflict. After the war in Styria Austria, all of these were scrapped save one found at the factory by the US Military and the subject of Phil's build. The car was heavily armored and used Panzer IV turrets for defense. Armored Rail Cars were popular in WWI and less so in WWII.

The structure walls are from Hansa Systems so he could scratch build the building by mounting the walls to plywood. The rail car is from Trumpeter and it went together well. The jeep is from Takom with a highly detailed 50 caliber machine gun. The figures are from Alpine and Phil added a piece of wire to mount them so he can pull and repaint if he wants [he has an artist oil base cover with acrylics to permit easy stripe and repaint]. Phil is still challenged by faces and heads and has them separated to work on. And now they are attached. Phil has used oil paint dots on the rail car that are dragged down with a brush soaked in thinner to give subtle hue changes and weathering.



Phil Pucher The Panzerjäger-Triebwagen 51 continued:



Barrels



Before



After – positions changed

Chris Boss



Chris has his 1966 AMT Buick Wildcat. His research on the car led to the color choice which gave his difficulties in finding a paint that color. It turned out a rattle can of Tamiya paint was the correct color and worked very well. Chris did NOT use a primer nor polish or clear coat. It came out well and he likes the way it looks.

Chris has started making his own washes with acrylics using Future with no thinning and blacks and grays for the grill and name plate. The chrome was from a Molotow pen.



Chris Boss

Chris continues to work on the Academy P-39 Airacobra with the resin interior and engine. So far, he is happy with how it is progressing.



Roger Rouse

The first figure is a Verlinden 120mm kit of Richard De Vere Agincourt currently painted with Valley gray primer.



Roger Rouse

Next, we have a Young Miniatures expensive German Feldgendarmerie from WWII in 1/10th scale



Roger Rouse

This figure took 1st in SyrCon. It has canned and airbrush painting and washes. It is a Roman soldier.



Roger Rouse



Roger likes mounted figures. This special Forces Afghanistan soldier was a bit pricey. It has a light gray primer, and the horse has a back primer. Roger used Bob Smith's Industries odorless super glue he found at Millenium Games and it worked well. Roger does a set sand to remove gloss finish on the kit and to supply a texture (tooth) for adhesion.



Ken Brent

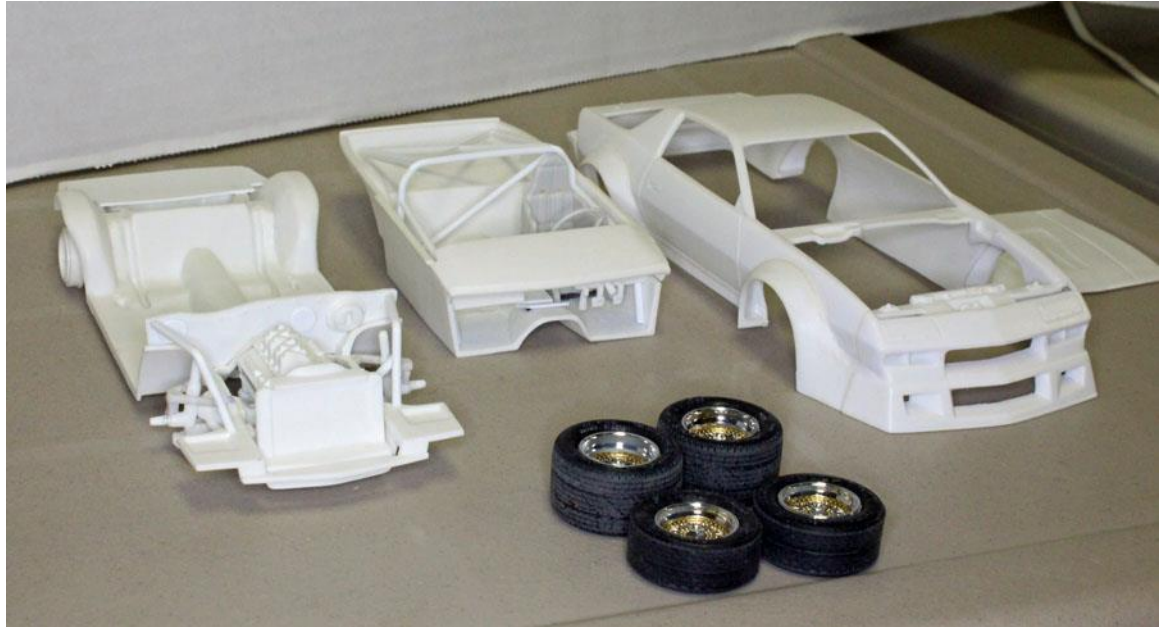
After 40 years in the stash this early 1/72nd Airfix Gr.1 Hawker Harrier sees the light of day. The original kit was released multiple times between 1969 and 1982. It had terrible decals. The wingtip wheels would not touch the ground so Ken had to shorten the back gear which gave it a nose up attitude. There were no lines on the canopy, so Ken masked by hand. He painted with Tamiya paint and over coated coated with the new Revell clear flat. Looks pretty good for such an old kit.



Ken Brent

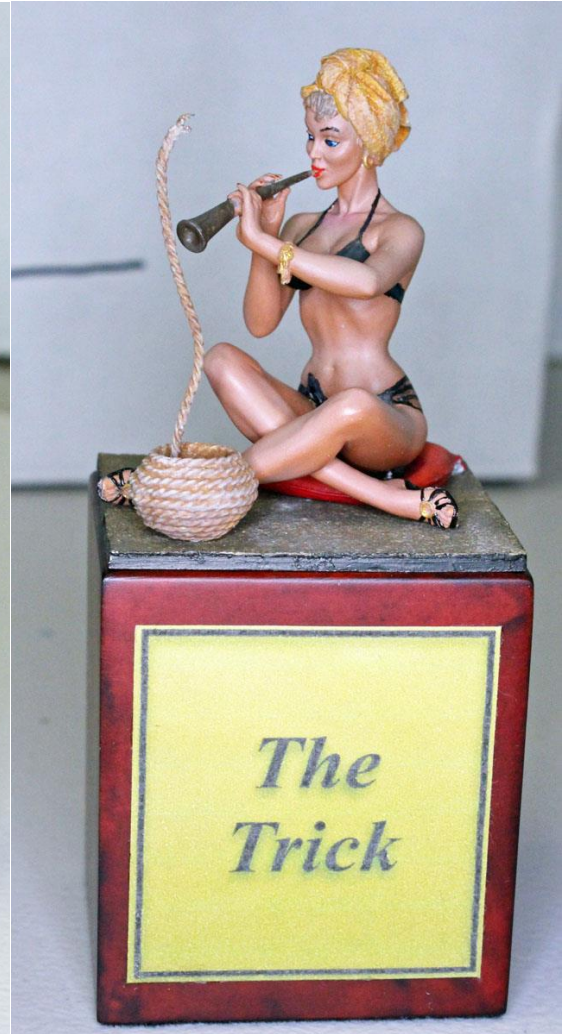
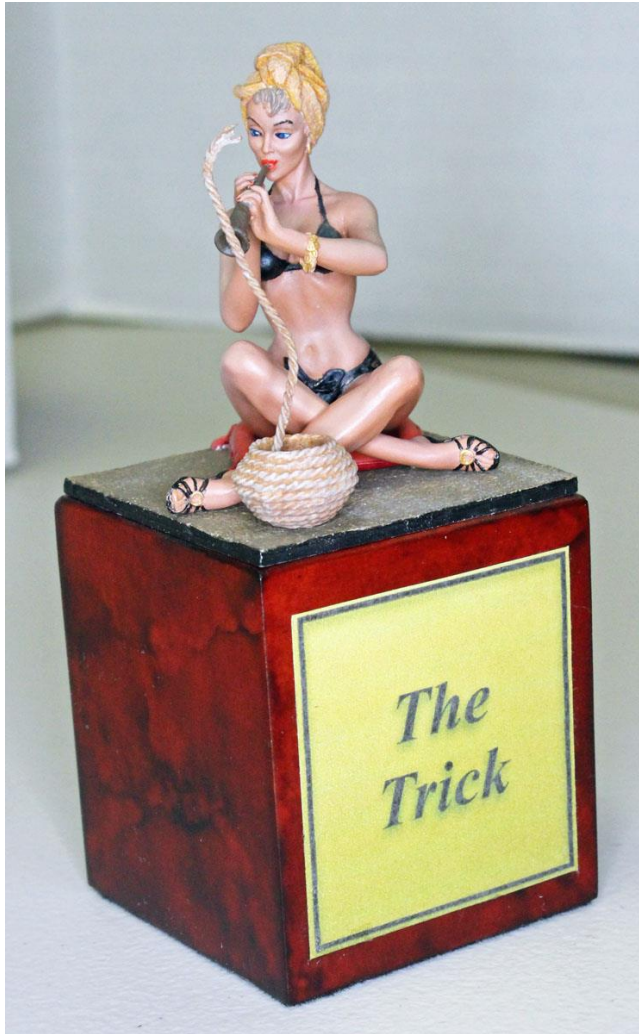


A 1982 IMSA Camaro from the Kelly American Challenge. This car does not match the series as it is a made-up car. Ken is scratch building a lot of this car. It has a tubular suspension, scratch build roll cage. Ken started with a stock IROC kit with flairs. Ken has some Microscale Decal Film to help with the older decals. The wheels were done with a gold pen [see last month's How To on Metallic Pens] and Tamiya black ink for the recesses. They are beautiful and unfortunately, I did not capture an image of them.



**Scott
Baroody**

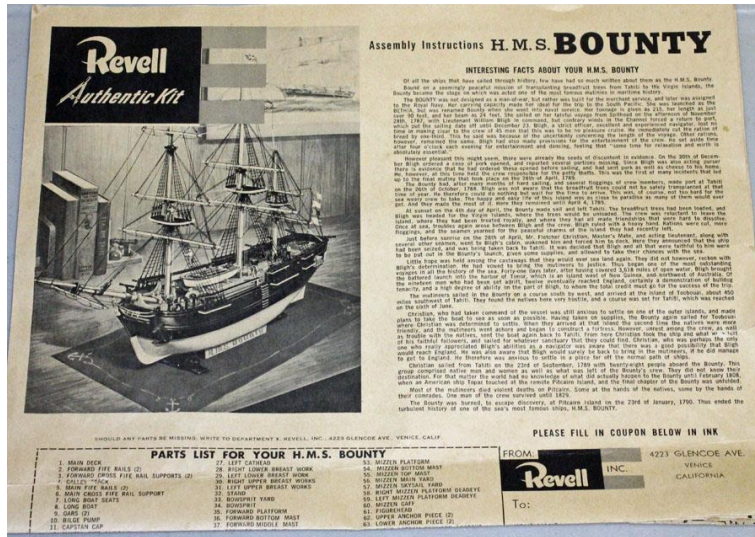
This is an Andrea Miniatures 80mm figure from the Pin-Up series, Pin-up 26, called The Trick. It is white metal. Scott primed it because he had to fill the metal seams on the arms that he filled with Milliput Putty thinned with nail polish thinner [diluted acetone]. Scott feels more contrast is needed. The figure is hand painted by brush with acrylics. Scott also wants to do more detail on the head, specifically the towel. The base did not come with the kit so he added it and a metal plate for the basket to sit on.



John McKeown



The in-work 1956 1/110th H.M.S. Bounty from Revell. John picked this up at ROCON. For the build he has been watching Harry Houdini Models YouTube videos on building the Bounty. John is doing a copper bottom on the boat, not white lead paint, as that was what was found in Bounty Bay on Pitcarin Island.



John Trippe

From October 16th to March 1st John has been working on this Flower Class Corvette he acquired at Syron. These were North Atlantic submarine chasers for Canada and the US. John intended to do this Revell 1/72nd kit as the H.M.S.-C Snowberry but a lack of references made it difficult to be sure he had rendered it properly. He is naming it a Flower Class Corvette Variant. The Revell release is actually an old Matchbox kit.

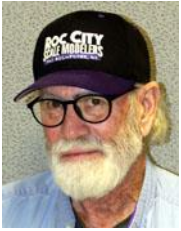
John amped up the guns and depth charges around the perimeter. The kit gave a basic beginning point. He did not like the depth charges, so he changed them to wood to eliminate the molding seams. John also handmade the oars for the rafts and the knots are his own work. The compass and binnacle took lots of research to get correct. There are also lots of pulleys and hooks to move the depth charges. He also added one aftermarket gun.

John threw a lot onto the deck such as spent cartridges, work pices, supply crates, a kitchen sink all to show a ship that is and has been at Sea.

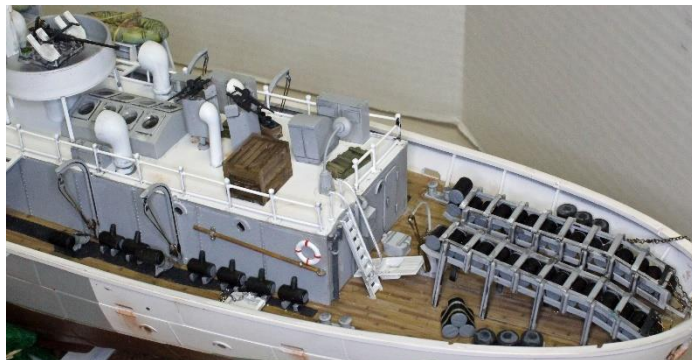


The colored flags have the following meaning: Red [B-Bravo] = Dangerous Cargo; Yellow/Black blocks [L-Lima] = Stop Instantly; Yellow/Blue [K-Kilo] = Desire to Communicate; and Yellow [Q-Quebec] = I request free pratique which is the Crew is Healthy and request permission to enter port. Yellow used to mean disease or quarantine and has since changed. The message John has created is: I desire to communicate as I have a dangerous cargo. Stop instantly. The yellow flag could mean I have a healthy crew or taken with the rest of the flags mean “to stay healthy, stop instantly as I have a dangerous cargo.”

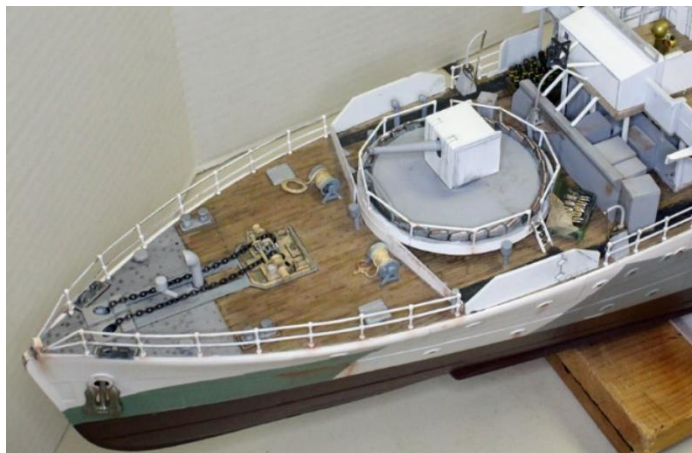
John Trippe Closeup of the Flower Corvette.



The compass and its binnacle.



The depth charges.

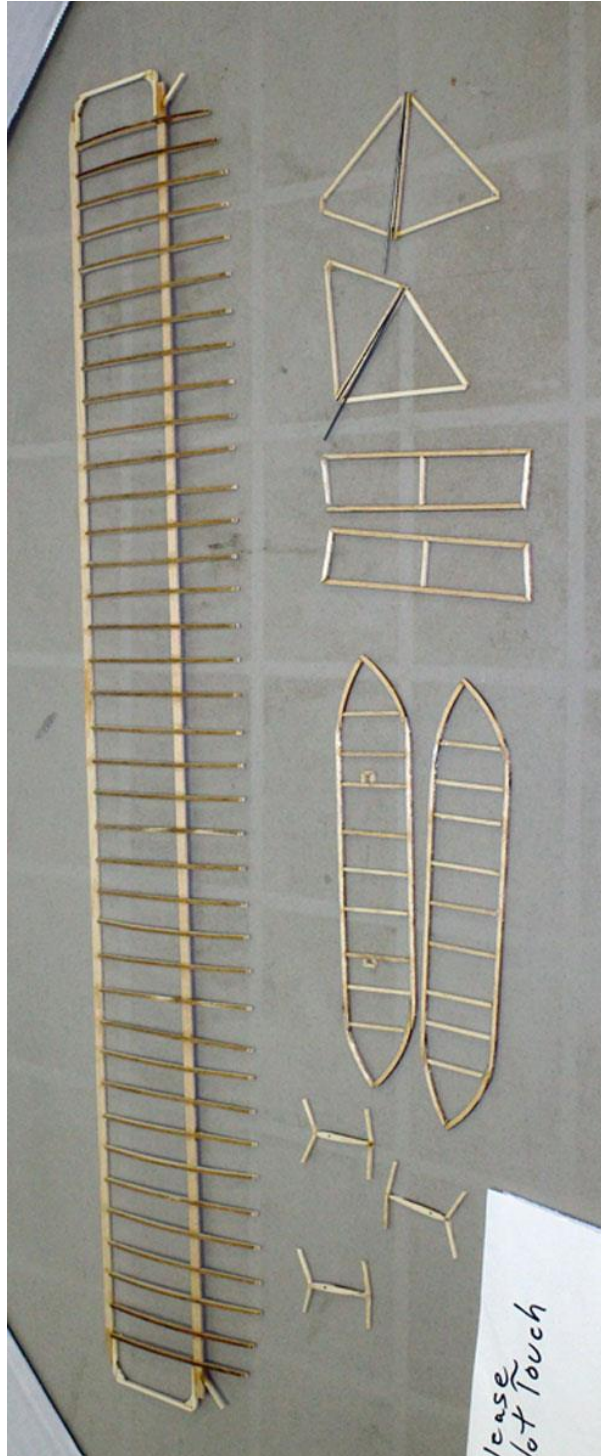


The Bow

Phil Wright



Phil, appropriately, is building the Wright Flyer. This is the Guillow's 1/20th scale, 24 inch wingspan, balsa and tissue kit. At this point in the build it is delicate and admittedly will remain delicate since it only gets a single piece of tissue over the top of the wings and each control surface just as the actual aircraft had muslin fabric. Phil is nervous entering the covering phase of the build. I think he chose this kit to relieve stress, but it may not be working that way.



Donn Wells

This is the newer 1/72nd Airfix Hawker Tempest Mk. V which was a follow on to the Typhoons. The kit is well engineered and almost like a snap tight kit with the tight fit of the parts. The gear doors have a flat edge, rather than sharp edge, for glue to be placed. The rear wheel has a door which ran away from Donn. After scratch building a replacement, the lonely door reappeared.

Donn wanted to do a European camouflage, [his Thunderstreak got him started on this scheme]. The camo scheme looked fun to paint. The decals included the black and white D-Day stripes, but they fell apart when Donn tried to apply them. Donn ended up painting them himself which replicates what was done in the field which meant the stripes were not always crisp on the actual aircraft.

The Tempest was fast enough to catch up to a V-1 in flight and would gently tip the V-1 wing to send it off course by putting its own wing under the V-1 and then a wiggle of the wings.



Jerry Rinaldi



Jerry's Moebius Death Dealer, based on the Frank Frazetta painting and sculpted by Jeff Yagher, is a nicely done kit. It is 1/10th scale plastic kit. Jerry uses tube glue, solvent based, so that it oozes out of the pressed together seams. Then he sands down the ooze rather than filling seams. It takes a careful touch to do this on thinner plastic pieces.

The paint was spray can Tamiya gray primer; airbrushed flat black; and dry brush brown and gold.

A very well done finish with subtle effects.



Jerry Rinaldi

For something different, Jerry is building a Pocher Ducati 1299 Panigale R Final Edition motorcycle. This is just the engine. The complete motorcycle is 20 ³/₈ inches long, 11 inches tall, and 7 ⁷/₈ inches wide. Ducati has been building motorcycles for 500 years in Italy.

Pocher is an old company, now owned by Hornby, that has made detailed large scale automotive kits which had features like complete engines with pistons and wire wheels that had to be built one spoke at a time. They had thousands of parts and were time consuming to build. They went out of business and were brought back by Hornby with more modern offerings than the autos from the 1900's to late 1930's. Parts are pre-painted and multi-media and expensive. The Ducati currently list for \$800-\$1000 and has 600 parts and 26 to 30 bags of screws.

