

IPMS Rochester
August 2020
Quarantine Show-n-Tell Report



Hello All !

Enjoy this month's contributions from your fellow club members.

Good Stuff this month (as always).

Thanks for your submissions !

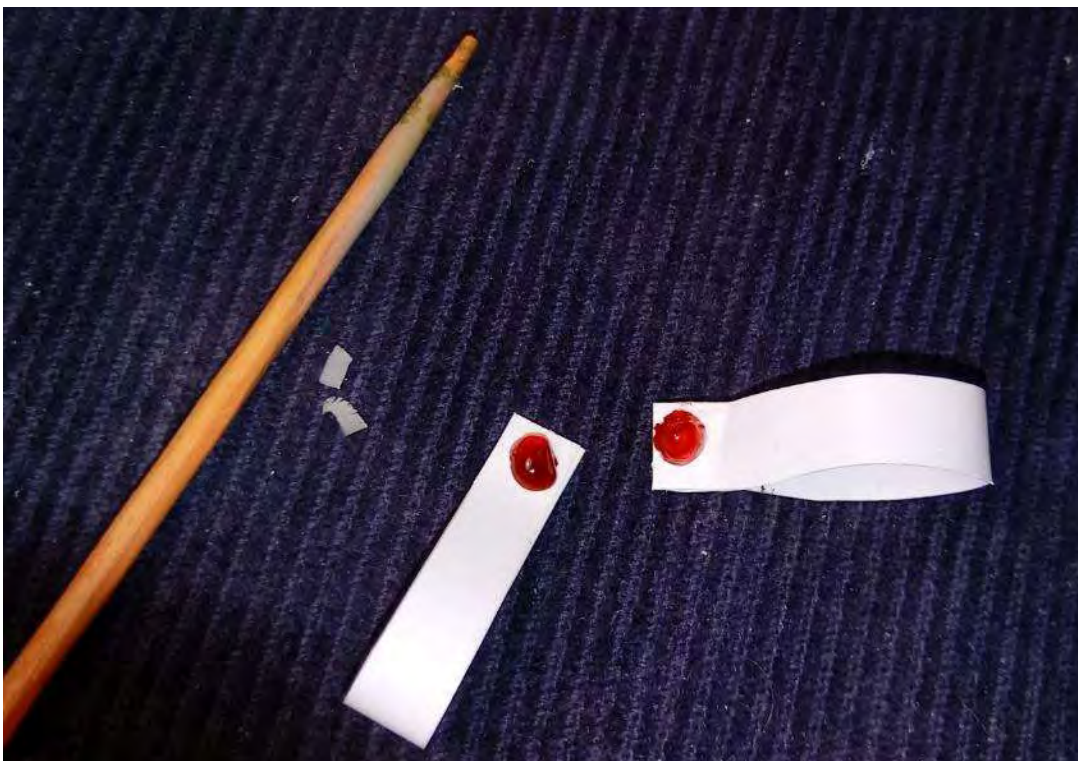
John Trippe

For a long time I've always been intrigued to build an old Aurora monster kit from my childhood with the experience and skills that I now have as an adult modeler.

Meet Dracula. No, not one of those modern, incredibly real vinyl kits but an Aurora reissue of so long ago. But, I made some changes: Drac has a sculpted forward point to his hair, sideburns added, and teeth sculpted longer. His gold ring and cufflinks are homemade rubies and the cuffs are sheet stock.

His hand veins are bigger and swollen. He's very hungry. The base includes 2 bats and a spider. One bat is in flight and the other is upside down with wings folded. And the spider has web.

Fellas this was the most fun I've had in a long time! Fun, fun, fun..





Even the shadows from this little vignette are awesome! (editor)



The P3 Orion is done! About 2 months of work on a "weekend build". The Sub Killer is a converted Lockheed Electra from civilian service that the Navy used. A simple "toy" kit from Revell from decades ago.



Equipped with scratch built missiles for some eye interest and because so much is still Classified about the P3A, that less became more with its presentation.

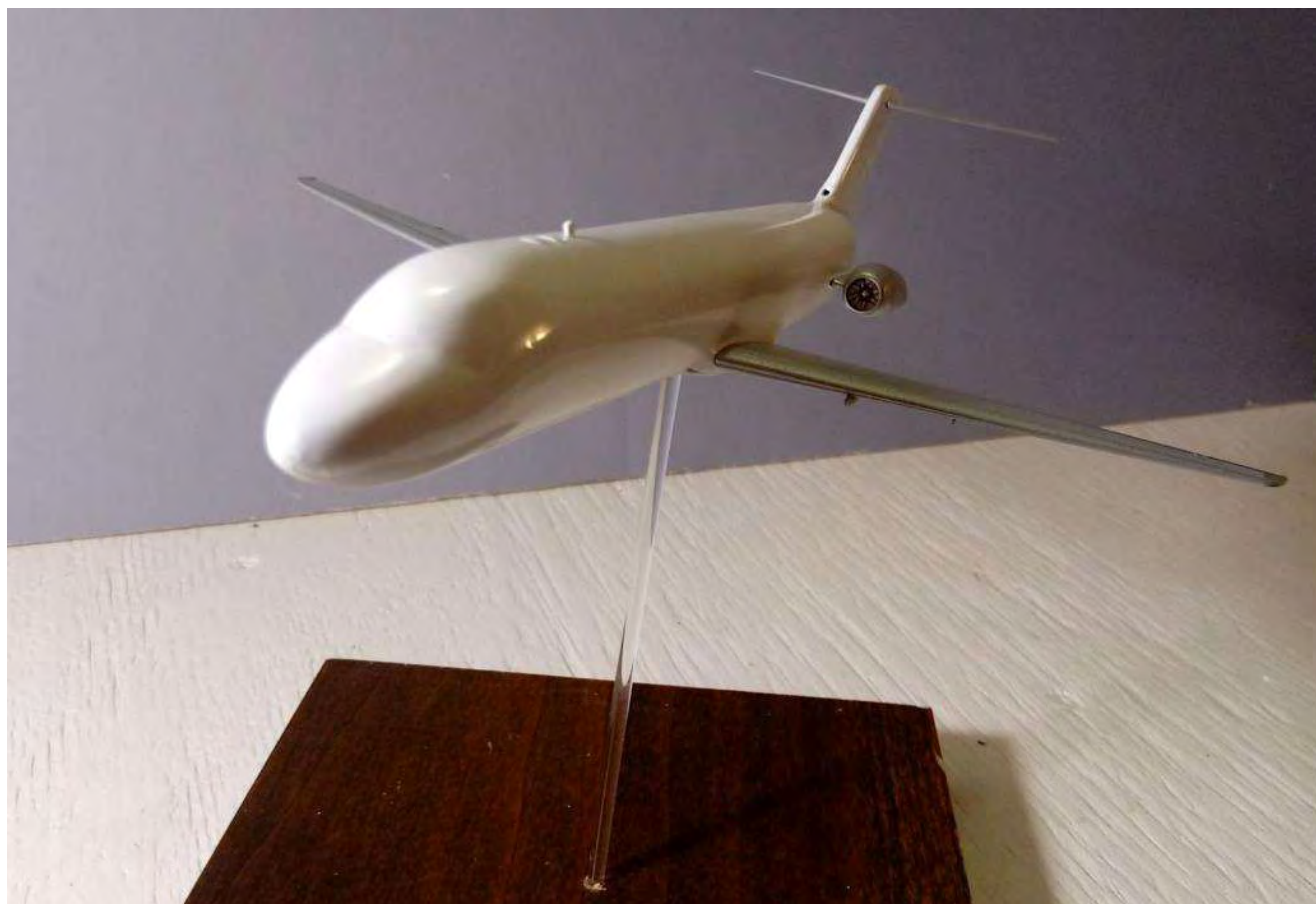


On the horizon I have a couple things happening.

First is a Welsh vacuform DC 7 that I have Grant to thank for (through Ken). I'm off to a good start.



And finally a 40 year old MPC kit - The DC9. Finish is done and I'm awaiting a set of Ozark Airline decals to bring things home.



John "MacGuyver" Trippe also sent in a few (literal and figurative) "Tips for Tools".

- PLIERS "TIPS"

Though rare, sometimes you need the "oomph" of a real set of pliers. But using them can bring ruin to the piece you're working on. Here's what I did. I glued polystyrene to the tips of the pliers. Any marks that occur are on the pliers tip. Not the part. Micro mart sells these padded pliers for several dollars. These work just fine, using scrap.



- SPATULA "TIPS"

Putty Spatula made with a dowel and plastic stock. Keeps fingers cleaner and improves ability to get into compound spaces. . . . I got a million of 'em.



Paul Wojciechowski

Fortunately, all the daguerreotype prints of my early-year models have been lost to history. Climbing back into this great hobby, I'm still experimenting with inexpensive kits. The latest is the Revell 1/48 Ju-87G Stuka Tank Buster (\$12 at Hobby Lobby) with raised panel lines. Having applied the decals, I realized the yellow and German white crosses were far too bright. I remembered a seminar on the importance of toning down those colors while adding in some weathering as well. The pics speak for themselves--several artist-oil colors brushed down with Turpenoid over dried Vallejo RLM 70 and 71, then finished with a coat of Vallejo matte.





That's some sweet fading / weathering right there (editor)

(The hardstand under the Stuka is compliments of a generous loan from Phil Pucher.

Someday, he just may get it back.)

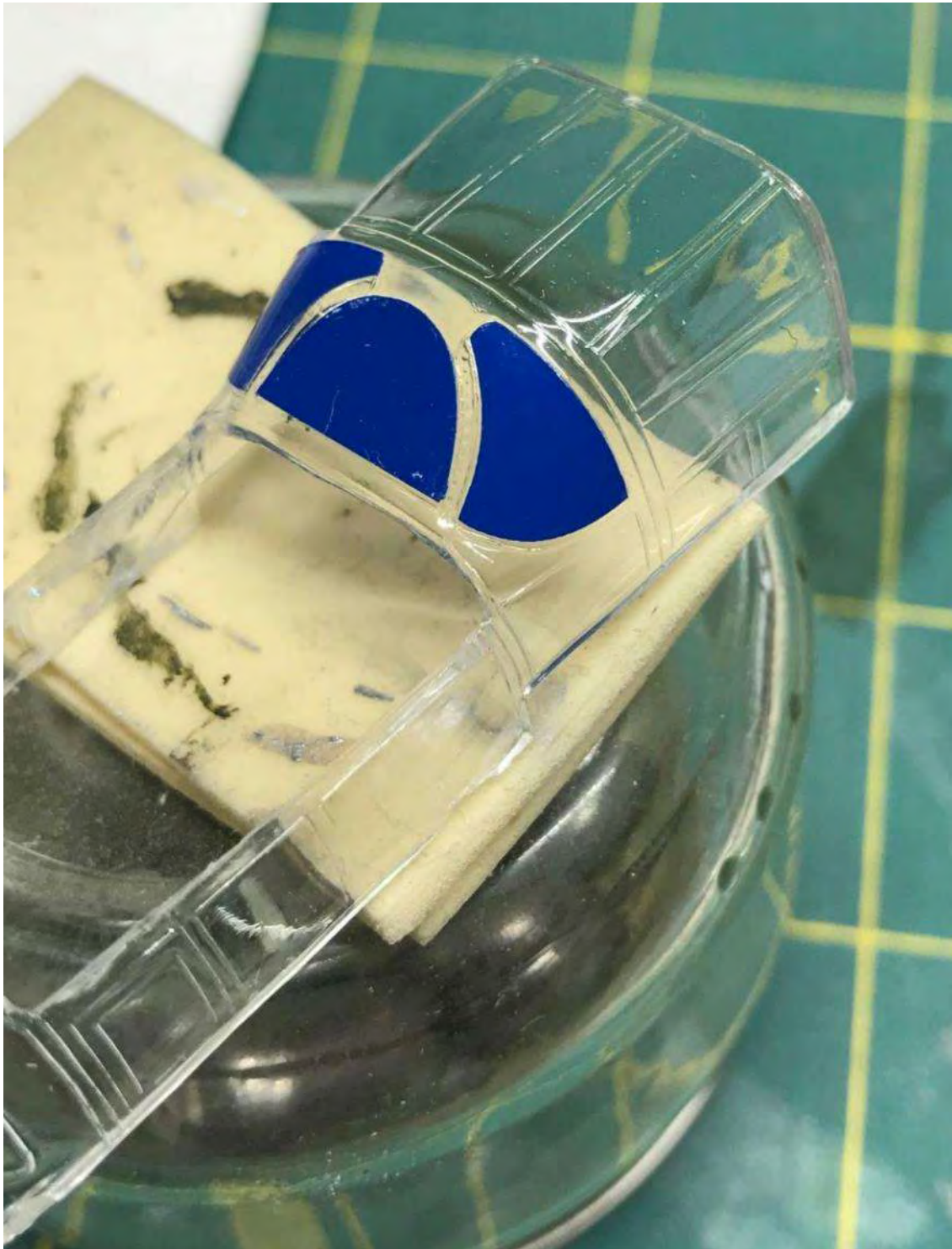




Now for the info-mercial: I'm enclosing a photo of the cockpit "greenhouse" canopy from a 1/48 Revell P-61 Black Widow (another Hobby Lobby bargain standard).

I'm using Chris Loney's E-Z MASKS. They are extremely thin, stretchy vinyl masks with a fairly strong adhesive, and work very well over compound curves such as the corner windows on the P-61 (see pic).

Just make sure any coatings of J&J's Future have properly cured. (I receive no compensation for this endorsement.)



Steve Smith

OK, here goes. My oldest and first kit is the “American Indian” by Aurora.

I remember being on the front porch with my dad, assembling it. It probably was 1958 or so, Freeport NY.

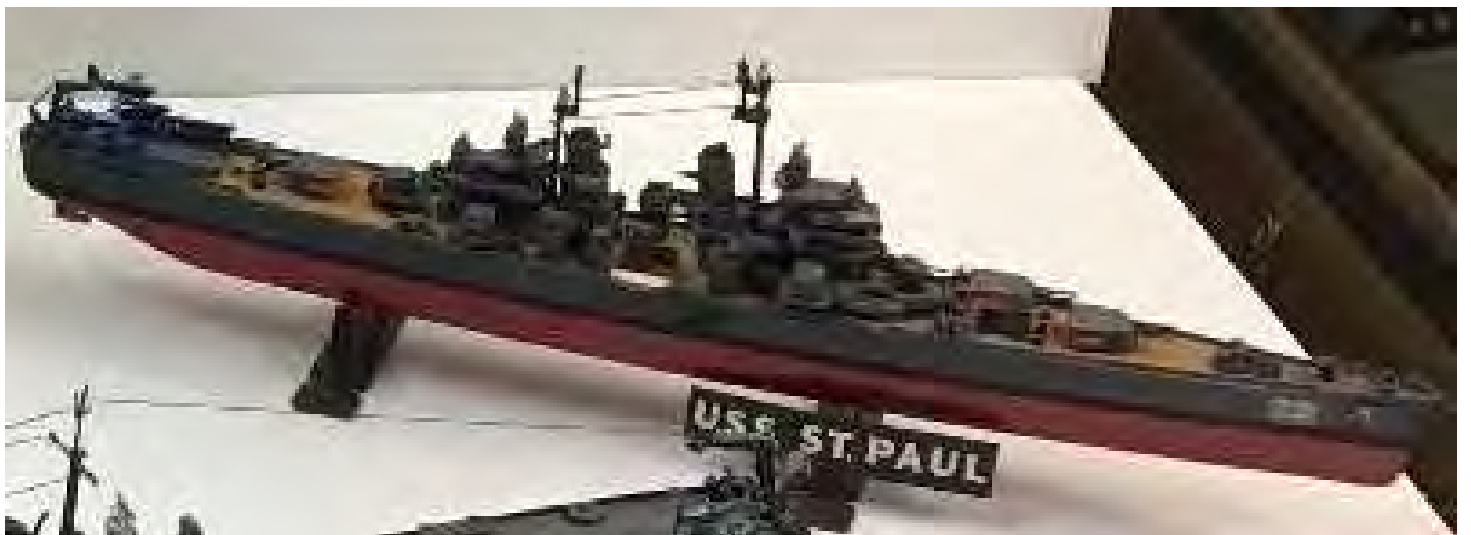


The other kits are some of my oldest, though I can't remember which one was the second kit I built.



They are variations of the same cruiser (Baltimore Class). One by Aurora, one by Renwal, and one by Revell. For us boat modelers they were the pioneer manufacturers. Back then the only reference for details was talking to somebody who served on the actual ship or some scratchy black and white photo in the encyclopedia. Check out those seam lines. The razor sharp rigging. The flash, oh the dreaded flash. And of course the deep brown decks. No hint of haze grey.





Steve Coykendall

Here's two that I've been working on. First up...

Fay is a commission paintwork for a client in Canada. The original sculptor contacted me to ask me about painting the piece after the client had issues with the painter he initially commissioned to paint it. Fay is a character from the Star Wars Republic comic book. The client commissioned the sculpture of the character that only appears in a couple of pages before she meets a nasty end...two lightsabers through her back. She is one of a kind, he made just one full casting of the sculpt.





Next up is Ursula

Ursula is another commission, this time heading to Portland, Oregon. I vowed not to paint this one again after the one I did for myself...the damned tentacles are a pain to assemble, blend and paint. She's just about done...just a couple more details needed. She'll ship in five pieces, head, arms, body and base. I have five more commissions for this client that I'm working on but those are in the primer stages right now.





Here's one more entry for the newsletter. These are the four seasons plus a fifth season (carnival) for a client. These are in the beginning stages of primer. I'm trying some new primer, stynylrez by Badger. Bodies primed in gray or white and a flesh tone primer on the flesh. They will all eventually have unique flesh tones when they're done.



Paul Stirrup

I've worked on a few things this month, mainly the honour build for a buddy (*See last month's newsletter for an account of the build – editor*), a 1/16 figure and started on the Challenger II TES 'Megatron'

1/35 Bigfoot Fueler driven by my buddy when he was in Germany.



1/16 101st Airborne 'Pathfinder' in Normandy





1/35 Challenger II TES (Theatre Entry Standard) 'Megatron'... great kit so far, some minor mould seam lines on smaller parts but other than that it's very well engineered.

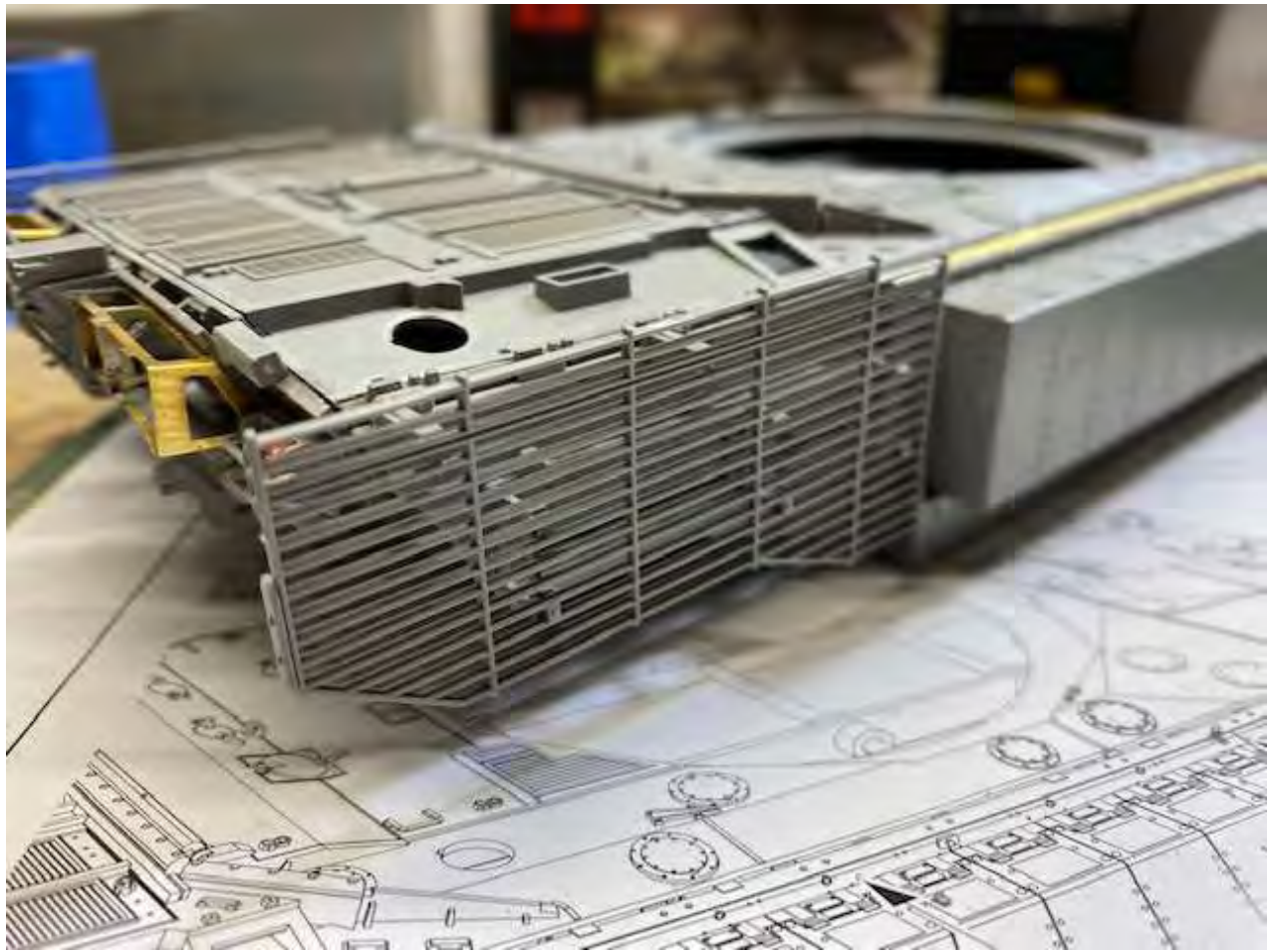




E43(E37)

F12(F

F42(F42)



Some of my early stuff...

My first big toy... 1:1 Challenger I in Bosnia, area guard to prevent local Bosnians using the lake or the hills on the far side. Serbs had seeded the area with AP Mines and dumped petrol and other chemicals into the



lake.

My first commissioned job, for the granddaughter of Douglas Kay, so she could present it to the sergeants mess of the 13/18th Royal Hussars.



Panther that featured in FSM (in the UK), and earned me \$50, I never did cash the cheque.



Mig 21 NVAF, my son tried to make it fly out of his window... didn't end well.

The editor is curious whether this photo was taken on the way down (?)



Charger for a friend, with custom paint and decal stripes.



Also, been hearing a lot of complaints about wearing masks while grocery shopping... just want to leave this here as a reminder how easy we have it..

Gulf War I 'Operation Granby' had to wear full NBC Kit, with respirator for 16hrs a day some days, in +100°F temps, so stop and think there are still people out there that have no choice but to wear protective equipment, least you can do is respect the rules and stop whining.

Be safe... and let's get through this as best we can.

Bill Gilman

1/72 Czech Master Resin (CMR) Blackburn Firebrand TF Mk.V (kit number 234 "Early FAA Schemes")



She was a late-war design for a torpedo bomber and strike fighter - too late to see action in WWII and too old fashioned for the jet age. Development began in 1941 and service entry wasn't until 1945. Only a couple hundred were built, and it was withdrawn from service in 1953. A big aircraft with a huge load carrying capacity, but in test pilot and naval aviator Captain Eric Brown's opinion the aircraft was "short of performance, sadly lacking in manoeuvrability, especially in rate of roll". The position of the cockpit was even with the trailing edge of the wing and gave the pilot a very poor view over the nose, inhibited his ability to view his target and to land his aircraft aboard a carrier, sufficient for Brown to call it "a disaster as a deck-landing aircraft." Although, the Seafire also had a cockpit even with the trailing edge of the wing...

The Firebrand was not unlike the contemporary Martin AM Mauler, another late-war torpedo bomber and strike fighter with similar production numbers and service years. I'm building a resin kit of that now.

Build Details :

Decals: From the kit, representing EK747-T, Naval Air/Sea Warfare Development Unit & Carrier Trials Unit, No. 703 Naval Air Squadron, RNAS Lee-on-Solent (HMS Daedalus), July 1947

Photoetch: Included with the kit, primarily for fiddly bits like antenna, cockpit details, probes, IFF, canopy handle, etc.

Resin: Uh, um, the whole thing is resin!

Vacuform: For the canopy, must be cut into two sections to be displayed open

Paint: *Colourcoats* Extra Dark Sea Grey, Dark Slate Grey; *Gunze* C364 Interior Grey-Green, H74 Sky, H47 Red Brown, H11 Flat White, H12 Flat Black, H77 Tyre Black, H329 Yellow FS13538, H4 Yellow, H18 Steel, H76 Burnt Iron; *Alclad* 101 Aluminum, 115 Stainless Steel, 314 Klear Kote Flat.



Bill Scarbrough

With the upcoming release of the Meng Fokker triplane (Wingnut Wings molds), I thought I'd get this one built.



A little bit of PE from Tom's Model Works and Aviatic.

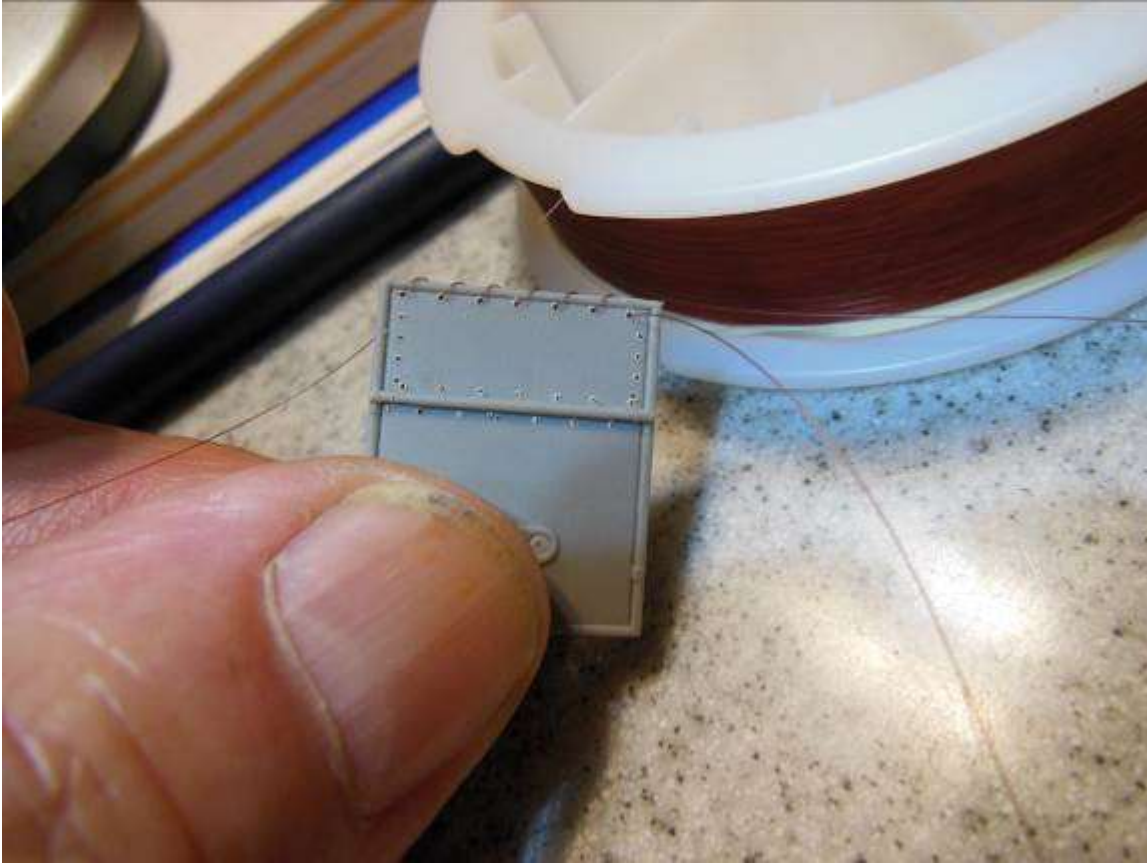




This is the rear bulkhead. I put it in my precision drill press. No way I'd get those holes uniform doing it by hand.



A test run of lacing. I'm using 2 lb. test monofilament line.



Some cockpit progress. There are no locator pins/holes on the cockpit framing.



Sadly, I have no photos of my early work.

I haven't got a lot of modeling done during the Covid-19 pandemic; the big news in my 1/32 scale world has been the sudden and quite unexpected closure of Wingnut Wings.

As a result, most of my activity has been centered around purchases. I've managed to get my hands on these:



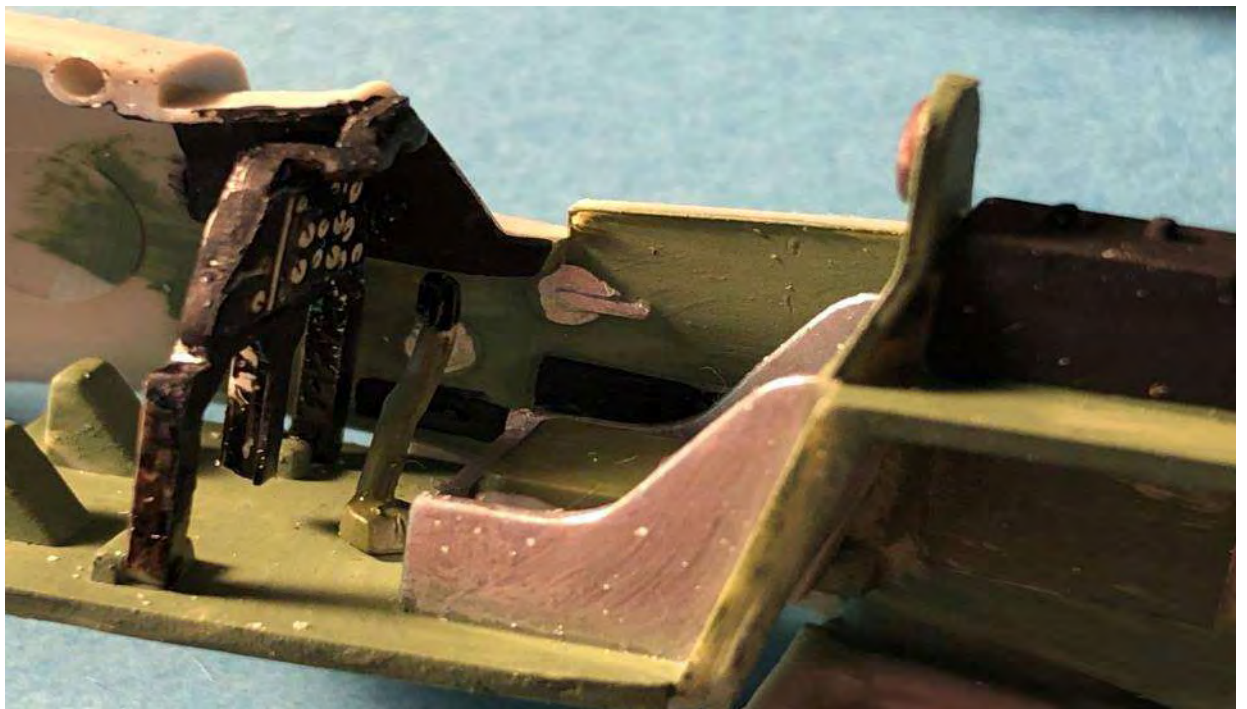
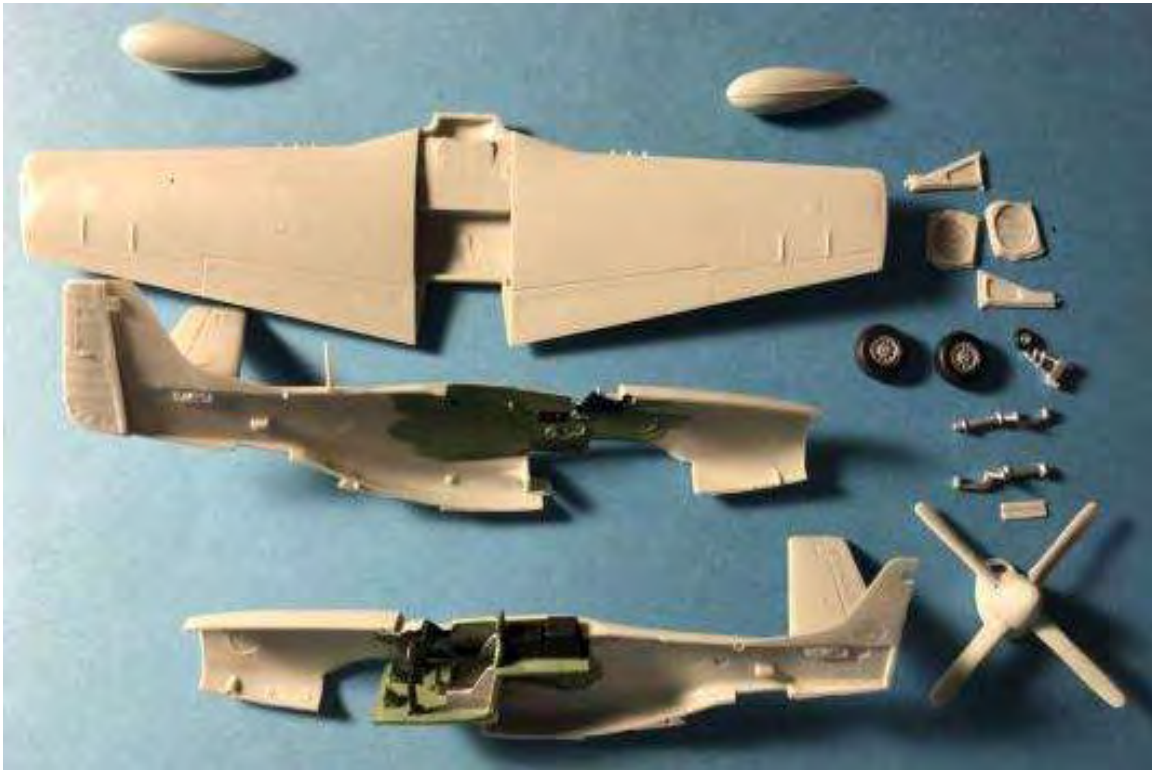
There are still a couple more on the way! They should go a long way toward filling the gaps in what I already have... I wonder what additions others in the club have made to their stash.



Ken Brent

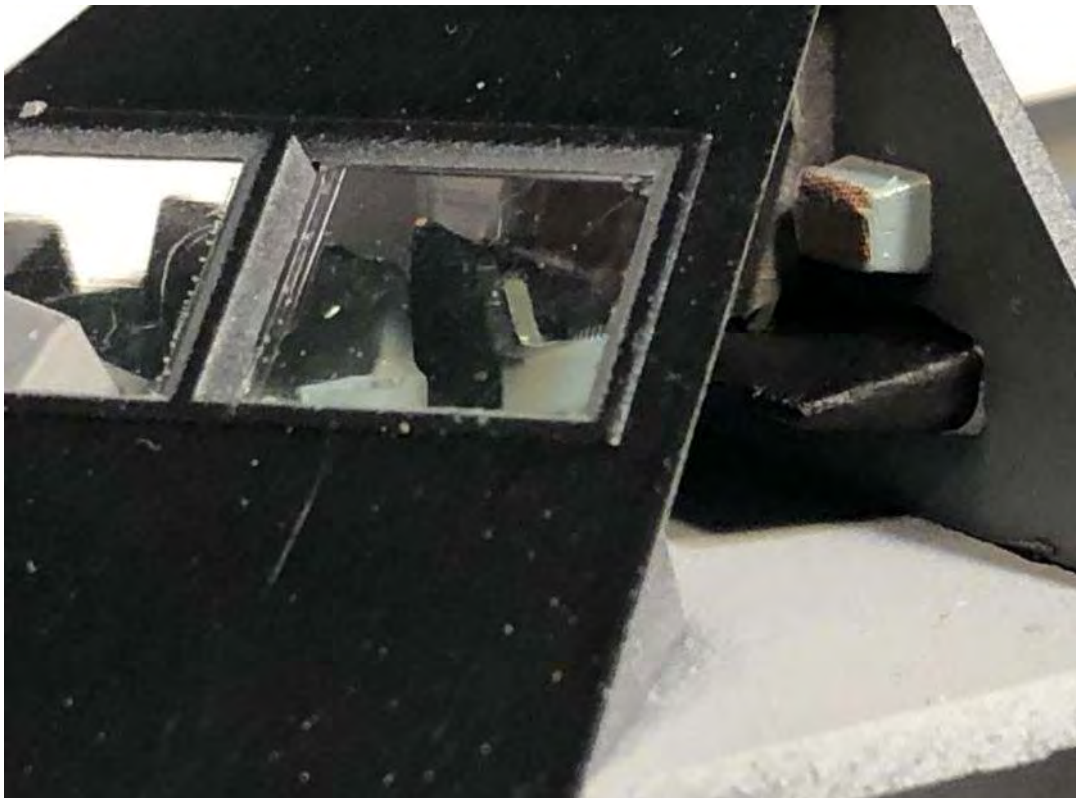
Minicraft 1/72 P-51D: March 1945 Major Robin Olds / Aeromaster decals

This kit was in my stack for well over 25 years and I finally got around to build it. This is a very basic kit, the intake and underside needed a bit of finesse to clean it up. Plastic stock and water based putty came to the rescue! The paint is Tamiya Aluminum from the can. Also Tamiya clear gloss from a can. All the detail paint was acrylic from Tamiya and Testors.





Revell 1/144 Lockheed Sea Shadow, also on my wish list for quite a while. Build between 1983-85, this ship was finally unveiled to the public in April 1993. This ship was used to research new technologies in ship building and stealth.



The kit itself is a challenge, with all the odd angles and round surfaces to glue. The dive planes snapped off immediately upon installation. They will be replaced by tubes for later insertion. The interior decals were not very responsive and I'm not looking forward the massive markings on the exterior. The manufacturer recommends NO solvents be used.



Anigrand 1/72 resin Rockwell International XfV-12A

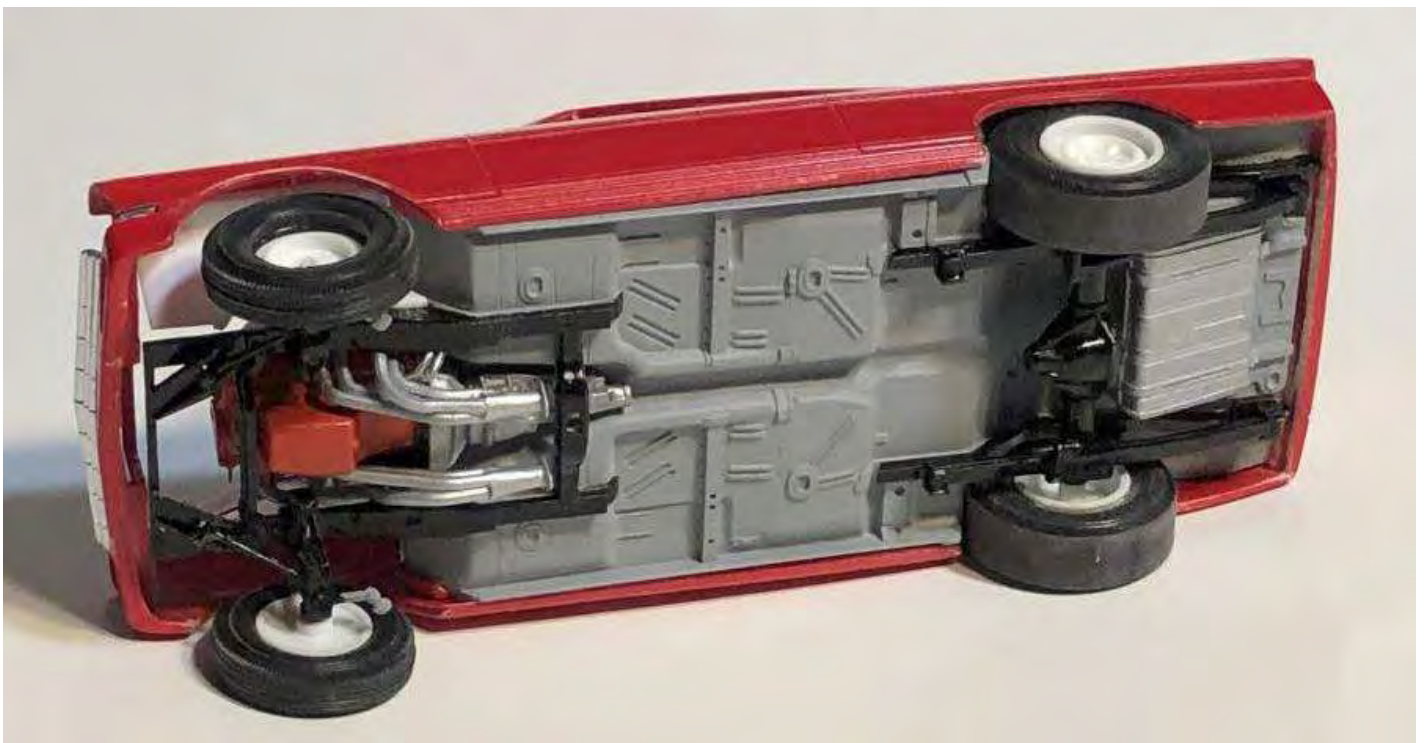
In 1972 the US Navy requested a V/STOL alternative to the AV-8A, 1 mock up and 1 prototype were built. To save costs, the cockpit/ nose section came from the A-4 and the wing box from an F-4.



The kit included very fragile landing gear, which I scratch-built to hold the mass of the model. The flaps and slats are separate and can be posed in the open position, as well as the intake vent. The canard wings were pinned, as I snapped them off multiple times.

MCW resin Chevy 2 Fastback / Trumpeter 1963 Chevy 2 plastic kit

There were only four of these real bodies made to be used in sports car racing. Since there was a minimum of 50 units, the cars were sent to a few drag teams to be used in the 1/4 mile. This is my rendition of one of those teams.



The resin body master was based off the Trumpeter plastic kit. The interior and chassis was heavily modified to get everything to fit. The 409 engine and transmission was taken from a 1962 Chevrolet Impala, like the actual car. The model swap is a AMT Z-11. The rear axle is a parts box 12 bolt, also from a Chevy. The carburetors are from a 1964 GTO



Dick Senges

Modeling with Plaster

by Richard Senges

Intro - Over the last 67 years of modeling I have used these plus other materials to create model scenery and parts. Below are listed some of my favorite plaster materials.

Durham's Water Putty - This is great stuff, inexpensive and easy to use. I have used this material in a way somewhat different than the intended use. I have cast many small items using *Durham's Water Putty*. It is the right color for wood and can be stained brown or black to simulate the perfect wood stump. One caution: it cannot be used in a large mass as it will not totally dry.

USG #1 Moulding Plaster - This is my favorite plaster material for general use in making hills. It is harder than plaster of Paris and softer than *Hydrocal* plaster. Great for making rock face castings and can be used with the "slap molding" method of applying rock castings. It can be applied with a brush for roads or stippled for general terrain. Moulding plaster will take acrylic stains unlike *Hydrocal* which is too hard. Cost is about \$23 per 50 pound bag in the Rochester, NY area.

Sculptamold - *Sculptamold* by AMACO is a mix of paper mache and plaster and is great for the final contouring of your model scenes. It can be mixed with water and made into a ball which one can form in your hands unlike plaster material. Only downside is the cost - about \$50 for a 25 pound bag. Great for smoothing out those rough areas on your model railroad scene.

White Hydrocal Gypsum Cement - *Hydrocal* is the best stuff to use for strength and hardness. It can be applied over *Wet N Shape* (over a foam or corrugated form) for making hills. It can be applied with a brush for roads or stippled for general terrain. Can also be used for castings. Sometimes hard to find and pricey but carried by wallboard or drywall suppliers. Can be purchased in 50 pound bags.

Dental Stone - Gray or Tan - My very best choice for casting small model parts. I have used the gray for metal items and tan for wood items. Makes great detailed parts and easy to use in a one part latex rubber mold. Great for making stones for a stone wall or stone building. Just make a one part mold out of crinkled tin foil and pour in the gray dental stone. When dry break apart the long strip of stone into small building block sizes. Comes in a 25 pound bag from a dental supply house.

Wet N Shape - This is a unique material. Basically a cotton gauze-like material impregnated with starch. It contains no plaster but is a great substitute for plaster-cloth for making hills. Its unique property is it is stiff when dry and when wetted becomes limp. But when dry again takes the shape of whatever it was placed onto. Can be used to simulate scale canvas. Cool stuff.

Image of the various plaster materials



Chris Boss

This is my one completion for the month – the Hasegawa P2V-7 Neptune that has been lingering through the last few newsletters.

The temporary base was abandoned for this improved “Pacific Ocean Water” base.

I enjoyed building this rather unique and interesting a/c. The Hasegawa kit went together with very little difficulty – although the painting and decaling instructions were something of a mystery. Reference photos helped.



As a side note – The P3 Orion shown this month in John Trippe’s build was the successor to the P2V Neptune.



The rest of my modelling time has been baby steps of progress on a few other models that you may have seen before in the newsletter or at meetings.

I was able to get a body coat of metallic black on this Willie's Gasser that has been sitting for over a year.



Lots more to do on this one . . . It might need some white or color added to the interior. It's just a black hole now – nothing can be seen in there !



A little progress on the 1/72 Airfix Gladiator – the rigging is done ! What a honey of a kit though ! - No snags at all with this one.



And some progress on the BIG GUY – a 1/72 AMT B52-G

Cockpit and gear bays completed – then the fuselage was slapped together.



The rather unique main gear bay alignment of the B52.



The fit was pretty good – after surgically removing the kit’s “*misalignment pins*”.

The wings are placed – but not glued in yet. This thing is a monster ! The Photobombing Gladiator was added for scale.



I think this one’s gonna be a ceiling hanger - There’s no other place to put it !

Dug up some old photos of models I built as a teen. The dates on the backs of the photos ranged from Winter 1976 through '78 or so. For a time, my friend and I would build cars or trucks and then photograph them outside in natural "dioramas". The photos are all that remain. Wish I had taken a few more !

1/48 scale F86-D Sabre Jet (Entex Kit)



1/24 Scale 1975 Dodge Road Runner (MPC Kit)



1/24 Chevy Blazer - My friend's Dodge Pickup in back



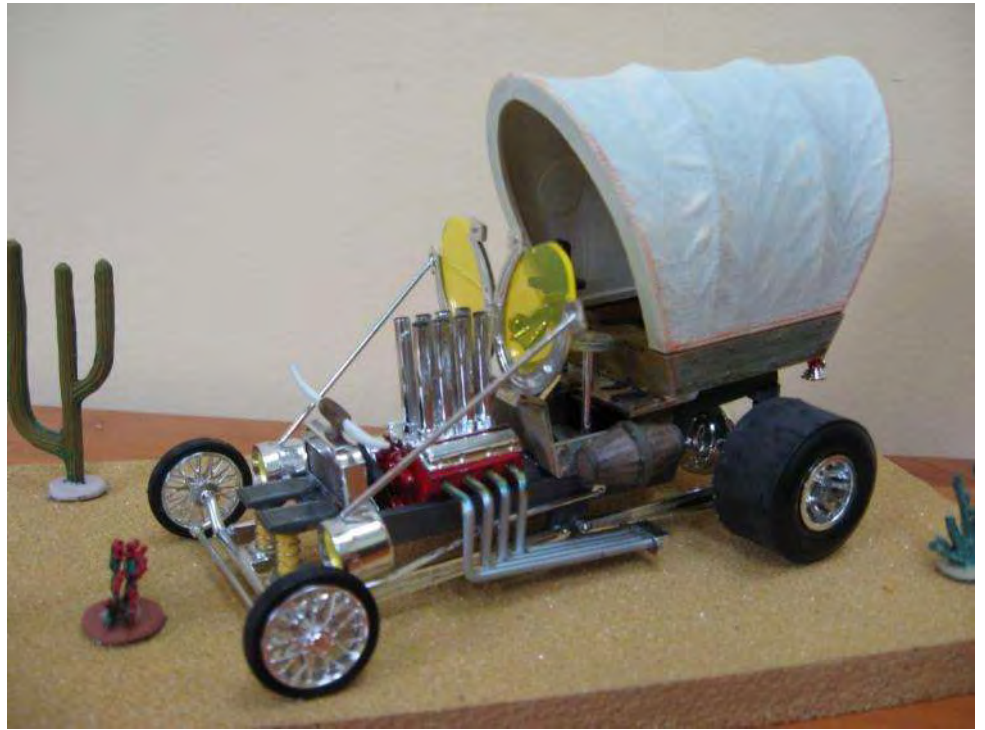
???



Peter Leas

I haven't been building much lately. My siblings and I have been helping my mother downsize from her home of 60+ years to assisted living apartment.

The first pictures are of something that was supposed to be a quick stress free build but...dragged off the bench once by a shirt sleeve, started to rebuild and then knocked off by a large can of spray paint. After "cleaning up" to try and find missing parts this 2 week build lasted 3 months. The figure inside came from an old bag of toys.



The Pontiac was originally built by my brother, brush painted and 2 years later became mine. I changed the wheels and tires and added contact paper wide stripes. I left some dust on the tonneau cover as it needed a bath before being photographed. This was before I ever knew the magazines about models.



The figure was acquired from a neighbor and came in pieces and a bad paint job. My first restoration was cleaned up, reassembled and painted in the late 60's.

Currently still finishing up at my mom's and home repairs.
. . . keep on building.....



Armande Miale

Armande continues work on his 1/48 SBD-5 Dauntless, showing the various painting steps.

Black base coat of Mr. Sufacer 1500.



Bottom white added.



Intermediate Blue on side and tail.



Non specular blue on top.



All out together and decaled.



Phil Pucher

Ju-88

Finished. Finally!!!! On-line reviews indicated a fuselage problem. Review also said the cockpit area was for “experienced modelers”. I eventually realized that this was a euphemism for “there are going to be problems”. Started with the cockpit. Vague instructions, poor fit of parts. Canopy (5 pcs) too narrow, had to glue tabs to cockpit edges to spread canopy. Poor fit of landing gear. Had to force it into place. Would have been better to install gear first then add nacelles.



Given size of model, decided to finish wings and fuselage separately. Fitted wings before painting. When I went to install the wings, there were gaps that had to be shimmed. Had to sand, mask, and repaint. Sprayed Future for decals/pin wash. Applied wing cross and fuselage codes (one side). Terrible decal firm, couldn't get rid of it. Masked and over painted film. Paint caused film to lift. Stripped off decals, masked, re-painted. Made stencil, painted fuselage codes. Cut film from letters for other side and installed individually. Worked OK.



Started pin wash on underside, couldn't remove excess. Re-painted (again). Resprayed with clear gloss lacquer, used artist oil pin wash, worked OK. Oversprayed with gray mist to fade base colors. Too much mist, so had to mask and repaint (AGAIN).

Not my best effort. Too much re-work. Eventually ran out of patience; just wanted to get it done.

My "Golden Oldie(s)"

Sdkfz 263 Command vehicle. Standard 232 with turret removed and sides extended upward and roof added to form an armored box. Used the Tamiya kit to do the conversion, did it just like the real one. This was my first "big" show (Syracuse 9/80).



While this model & base were constructed 20-25 years ago, the “golden oldie” is the Luftwaffe dagger. The dagger was made between 1939 and 1945, a time when the oldest of us were still in diapers. The base is 3/4” plywood covered with blue cloth and a hardstand made from textured posterboard. The sides are poplar clad with mahogany veneer.





Recently acquired this display case. However, most of my tanks won't fit (think it would be good for cars). There are slots in back to accept a sliding panel (missing but easily replaced). It is FREE to anyone who wants it.

