

About **MAGAZINES**
Gwinnett/Snellville

INSIDE THIS ISSUE:
Election Information
Prom Season
and much more!

www.aboutgwinnettga.com



aboutgwinnettga



aboutgwinnettga

About **MAGAZINES** Gwinnett/Snellville

Dear Residents of Snellville,

We are delighted to introduce you to “About Magazines Gwinnett/Snellville,” a remarkable publication born from a special partnership with About Marketing and The Greater Eastside Chamber of Commerce. This collaborative endeavor is set to redefine how we experience and engage with our beloved Gwinnett and Snellville communities.

At the heart of this magazine lies our unwavering commitment to showcasing the vibrancy and potential of our region. Together with The Greater Eastside Chamber of Commerce, we aim to be your trusted source for everything local, from the thriving businesses that fuel our economy to the inspiring stories of individuals who contribute to our community’s growth.

This partnership will bring you a wealth of information, insights, and opportunities. Expect in-depth features on the businesses and entrepreneurs shaping our local landscape, as well as invaluable resources to help you connect, network, and thrive right here in Gwinnett and Snellville.

“About Magazines Gwinnett/Snellville” is not just a publication; it’s a testament to the power of community collaboration. We are excited to embark on this journey with About Marketing and The Greater Eastside Chamber of Commerce and look forward to celebrating the unique spirit of our region together.

Sincerely,

Derrick J. Wilson, Editor-in-Chief
About Magazines Gwinnett/Snellville



***NEW* TRAINING DIVISION**

BROUGHT TO YOU BY THE GREATER EASTSIDE ALLIANCE

STAY READY FOR THE GAME OF BUSINESS

ELEVATED ESSENTIALS CLINICS (2X/MONTH)

SOCIAL MEDIA SESSIONS (ON LINKEDIN) | FREE

(ANNUAL) GAME ELEVATION COMMERCE CLINIC

Learn More: GEAinc.ORG



In collaboration with:



© GREATER EASTSIDE ALLIANCE 2024



Elect
CURTIS CLEMONS

GWINNETT SHERIFF

34 Yrs. Gwinnett Law Enforcement Experience!



Marine Corps
Veteran



Former Gwinnett
Deputy Sheriff



Deputy Chief Inv.
Gwinnett District Attorney



Retired Asst. Chief
Gwinnett Police



Gwinnett Solicitor
General Investigator



Youth Mentor
Community Advocate



Dine-in · Takeout · Delivery
Patties, jerk chicken and
Jamaican & Caribbean classics



1142 Atlanta Hwy

Grayson, GA 30017

Open 11AM- 8PM (closed Sunday)

(678) 344-5864



EXPERIENCE MATTERS!



Primary Election : May 21, 2024!

General Primary Election/Nonpartisan/General Election

Voters may choose any party or nonpartisan ballot that is available.

Voter Registration Deadline: April 22

Absentee Voting Application Period
Absentee Voting Application, English
Absentee Voting Application, Spanish:
March 4 – May 10

Advance Voting:
April 29 – May 17
7:00am – 7:00pm

Absentee Voting Voted Ballot Deadline May 21 by 7:00pm

Election Day

May 21
7:00am – 7:00pm
Runoff - General Primary/Nonpartisan

Voters who selected a specific party ballot for an election will receive the same party's ballot for the runoff.

Voter Registration Deadline:

General Primary/Nonpartisan Runoff: April 22
General Runoff for Federal Offices: May 20

Absentee Voting Application Period
Absentee Voting Application, English
Absentee Voting Application, Spanish:
April 1 – June 7
Advance Voting: TBD (but no later than June 10)
Absentee Voting Voted Ballot Deadline:
June 18 by

Election Day

June 18
7:00am – 7:00pm



Offer
\$14.98
 Monthly Membership
 Promo code: Member

BENEFITS INCLUDES BUT NOT LIMITED TO:

- 1) Free monthly electrical inspections
- 2) 15% discount on all emergency calls & normal labor
- 3) Complimentary materials. (See contract for details)

TRUBLU SERVICES LLC
(404) 372-1916
www.trubluservicesga.com



ELECT
RAMONA 
 FOR GWINNETT COUNTY
 STATE COURT JUDGE **TOOLE**

Election Day:
May 21, 2024



www.TooleForJudge.com

Elect

TUWANDA RUSH

WILLIAMS



for

SUPERIOR COURT JUDGE OF GWINNETT COUNTY

Vote for The Only candidate with:

- Over 31 years of legal experience in 25 areas of law
- The accolade of being the 1st African American President of the Gwinnett County Bar Association
- A history of service as a local government attorney

Early Voting: April 29th - May 17th
Election Day: May 21st



Temperance. Transparency. Trust.

WWW.TUWANDA4JUDGE.COM

Visit the Walk of Heroes Veterans War Memorial in Conyers



**WALK of
HEROES**
VETERANS WAR MEMORIAL

3001 Black Shoals Road
Conyers, GA 30012

Open 7am - 9pm, Closed Wednesday

770-278-7529

www.walkofheroes.org



For more information on tourism in Conyers-Rockdale,
call 1-800-CONYERS, Email VISIT@CONYERS.COM or VisitConyersGA.com



Jason Bryant – Agent

Providing Insurance & Financial Services
Auto • Home • Life • Health • Business

Please give us a call so that we can
provide you with a complimentary quote
for your insurance needs.

1910 Highway 20 SE, Suite 200 • Conyers, GA 30013
678-374-4793 • www.jbryantinsurance.com

Don't miss your next chance
to advertise in our new magazine!

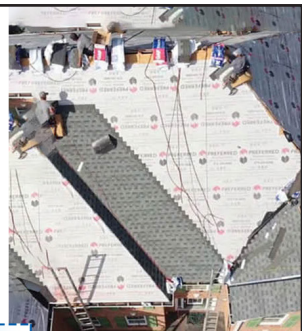
About **MAGAZINES**
Gwinnett / Snellville

Reach 15,000 homeowners!

Contact Derrick Wilson

770-421-5598

derrick@aboutgwinnettga.com



EXP Contractors LLC

519 Forest Parkway, Suite 260A
Forest Park, GA 30274

(470) 796-2352

www.expcontractorsllc.com

Free Gutter Cleaning
with Roof Replacemnt
Expires 11/30/23

**Free Upgrade
to Laminate Shingles**
with Roof Replacemnt
Expires 11/30/23

- Shingle roof installation
- Roofing construction
- Roof leak repair
- Storm damage repairs
- Roof incpection
- Roof restoration
- Guttering installation



GECC
GREATER EASTSIDE
CHAMBER OF COMMERCE

GREATER EASTSIDE CHAMBER OF COMMERCE

Where Small Business is Big Business!

770-765-6395

www.mygecc.org

2245 Wisteria Dr SW, ste. 230, Snellville, GA 30078

UPCOMING NETWORKING OPPORTUNITIES

April 2, 2024

11:00 am - 12:00 pm
CANDID CAFE' w/CRIS
LinkedIn Virtual Event -
<https://bit.ly/3PHCR50>

April 12, 2024

8:00am to 10:00am
Business Over Breakfast
Peachtree Cafe - Lawrenceville
30 S Clayton St Suite 200
Lawrenceville, GA 30046

April 16, 2024

11:00 am - 12:00 pm
CANDID CAFE' w/CRIS
LinkedIn Virtual Event -
<https://bit.ly/3PHCR50>

April 23, 2024

11:30am to 1:00pm
Business Connections Mid-day Networking
Thrive Coworking
2245 Wisteria Dr SW
Snellville, GA 30078

April 25, 2024

5:00pm to 7:00pm
Thrive Coworking Presents: Lady's Night
2245 Wisteria Dr SW
Snellville, GA 30078
Please RSVP: <https://bit.ly/4aaXHSN>



COMMUNITY CALENDAR

Snellville Farmers' Market

Sat, Apr 6 2024, 9am - 12pm
2342 Oak Rd SW, Snellville, GA 30078

Authors Denny S. Bryce & Eliza Knight

Tue Apr 09 2024 at 07:00 pm to 08:00 pm
Gwinnett County Public Library - Snellville Branch,
2245 Wisteria Drive Southwest, Snellville GA 30077

Parent's Day Out

Sat Apr 13 2024 at 01:00 pm to 05:00 pm
2428 Main Street East, Snellville, GA 30078
Ages: 1 - 8 years Cost: \$10 per child

South Gwinnett's Annual Academy Awards Night 2024

Wed Apr 17 2024 at 06:00 pm to 08:00 pm
South Gwinnett High School,
2288 Main Street East, Snellville, GA 30078

Household Hazardous Waste Workshop

Thu Apr 18 2024 at 06:00 pm
Gwinnett County Library Snellville Branch
2245 Wisteria Dr. SW, Snellville, GA 30078

Snellville Farmers' Market

Sat, Apr 20 2024, 9am - 12pm
2342 Oak Rd SW, Snellville, GA 30078

Spring Car Show

Sat, Apr 20 2024, 11am - 3pm
Snellville Briscoe Park
2500 Sawyer Parkway, Snellville, GA 30078

AT&T fiber



Fastest internet Straightforward pricing

Delivering up to 5-Gig Speeds.*

Limited availability in select areas.

No equipment fees. No annual contract.
No data caps. No price change at 12 months.

Get started with AT&T Fiber®
300Mbps

\$55 **mo.**
Plus taxes.

Price after \$5/mo Autopay & Paperless bill discount (w/in 2 bills). Monthly State Cost Recovery Charge in TX, OH, NV applies. One-time install chrg may apply.

Contact your local AT&T representative

MD COMMUNICATIONS LLC
2245 Wisteria Dr SW, Ste. 230
Snellville, GA 30078

Office: 770-421-5598

Website: www.thecommunicationsmd.com

*Fastest among major internet service providers, based on 5Gbps offering. Internet speed claims represent maximum wired network service capability speeds to the home and recommended setup. Actual customer speeds are not guaranteed. Single device wired speed maximum 4.7Gbps. For more information, go to att.com/speed101. **INTERNET OFFER:** Price for Internet for new residential customers & is after \$5/mo autopay & paperless bill discount. **Autopay & Paperless Bill Discount:** Discount off the monthly rate when account is active & enrolled in both. Pay full plan cost until discount starts w/in 2 bill cycles. Must maintain autopay/paperless bill and valid email address to continue discount. **Taxes & Fees:** Up to \$99 installation fee may apply, plus tax where applicable. Taxes also apply. For one time AT&T transactional fees, visit att.com/fees for details. Credit restrictions apply. **Pricing subject to change.** Subj. to Internet Terms of Service at att.com/internet-terms. **Offers may be modified or discontinued at any time without notice. Other conditions may apply to all offers.** © 2022 AT&T Intellectual Property. All rights reserved. AT&T, the AT&T logo, all other AT&T marks contained herein are trademarks of AT&T Intellectual Property and/or AT&T affiliated companies. All other marks are property of their respective owners. 2505692



When You Have Water Damage, Call RestoPros!

Locally Owned & Operated!

Broken Pipes • Storm Damage
Appliance Damage • Sewage Backup

770.609.2301

FREE HOME INSPECTION!

restoprosnegeorgia.com

Call 770.609.2301 to schedule today!



RestoPros
NORTHEAST GEORGIA

Water Mitigation & Restoration Services

279 W Crogan Street
Lawrenceville, GA, 30046



Transform Your Home With New Flooring!



Mohawk, Shaw, Bella, Engineered Floors & Legendary Floors

Carpet & Flooring store showroom & carpet & flooring servicing



Carpet & Flooring Transformers LLC
1943 Main Street East
Snellville Georgia 30078
706-917-1779
www.carpettransformers.com





*Because
Everything
Is Possible*

***Emerging As A Leading
Communication Agency***



Web
SEO
Fiber
Cellular
Direct Mail
Social Media
SMS Marketing
Email Marketing
Digital Marketing

Elevate Your Brand with MD Communications LLC!

We specialize in transforming digital spaces with our website design, brand identity, and business solutions. Dive into the future of advertising with our cutting-edge audio and digital strategies on SiriusXM, iHeartRadio, Paramount+, Hulu, Roku and more.

Committed to excellence and driven by cutting-edge technology, our mission is to empower brands and connect with audiences, ensuring impactful and measurable results in the digital landscape

LET'S MAKE YOUR BRAND UNFORGETTABLE TOGETHER!

For more detailed information, visit our
Website: www.thecomcommunicationsmd.com

or

Call us at 770-421-5598



CATERING AVAILABLE!

MONDAY – FRIDAY 11AM – 3PM

Kingston 30 Jamaican Restaurant
455 Grayson Hwy, Ste. 128
Lawrenceville, GA 30046
678-373-3383

1820 N Brown Rd
Lawrenceville, GA 30043
678-847-0465

Hours of Operations
Monday - Thursday 11am - 9pm
Friday - Saturday 11am - 10pm
Sunday 12pm - 9pm

www.kingston30.biz

**\$9.99
LUNCH
SPECIALS**



★ MARCUS ★
COLE
FOR GWINNETT COUNTY COMMISSIONER DISTRICT 3

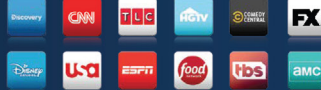
Primary Election: Tuesday, May 21, 2024
www.coleforgwinnett.com

DIRECTV

With DIRECTV's 2-year price guarantee,
STOP WORRYING ABOUT YOUR TV BILL & START WATCHING.

**CHOICE™
PACKAGE**

\$84.99*
MO.
for 24 months
+ taxes and fees



w/ 24-mo. agmt., Advanced Receiver Service Fee \$15/mo. and Regional Sports Fee up to \$15.99/mo. are extra & apply.

*New approved residential customers, price incl. TV pkg & equip. fees for first TV. Add'l fees may apply to non-qualified customers. Early agmt termination fee applies (\$20/mo.) & add'l fees may apply if equip. not returned. Credit card req'd. Restr's apply. Equipment lease req'd in some sales channels.

Watch on smart TVs and streaming devices while you're away from home via the DIRECTV app.

Available only in the U.S. (incl. Puerto Rico and U.S.V.I.). Req's compatible device and data connection; data charges may apply. Not all channels available to stream. Limited to up to 3 concurrent streams. Restr's apply. Visit directv.com/app for more information.

Easily access live TV and thousands of streaming apps like Netflix, Max, Prime Video and more, with just a click of a button.

Req's separate paid subscription/login for Netflix, Max, Prime Video (see amazon.com/amazonprime for details) and other 3rd party apps. Restrictions apply. High speed internet-connected compatible device required. Google login required.

Set-up is fast and easy with DIRECTV.

**gemini
AIR**

Tiny device. Big time entertainment delivering all your favorite live TV and streaming apps.

Req's separate paid subscription for 3rd party apps. Google login required. High speed internet required.



Contact your local DIRECTV dealer!

MD COMMUNICATIONS LLC

770-421-5598

www.thecomcommunicationsmd.com



Service subject to DIRECTV delivered via internet terms and conditions (see directv.com/legal/legal-policy-center/). Available only in the U.S. (excludes Puerto Rico and U.S.V.I.). Some offers may not be available through all channels and in select areas. Different offers may apply for eligible multi-dwelling units. Early termination fees apply for a maximum of \$400, prorated at \$20 per month over the 24-month term. Requires high speed internet. Minimum internet speed of 8Mbps per stream recommended for optimal viewing. **Pricing:** \$84.99/mo. for two years. After 2 years, continues month to month at then-current prevailing prices unless cancelled. **Additional Fees & Taxes:** Price excludes Advanced Receiver Service Fee of \$15/mo. (which is extra and applies to all packages) and Regional Sports Fee of up to \$15.99/mo. (which is extra & applies to CHOICE pkg or higher. State and local taxes or other governmental fees and charges may apply including any such taxes, fees or charges assessed against discounted fees or service credits. See directv.com/directv-fees/ for additional information. **Gemini Air Device:** First device included for well-qualified customers, otherwise \$120 for new Gemini Air. **Applicable taxes due at sale. Additional Gemini Air: Additional device for well-qualified customers \$10/mo. for 12 mos., otherwise \$120 each.** Purchased Gemini Air may be returned within 14 days of the Ship Date for a full refund however all monthly fees, including additional monthly fees, will continue to apply. **Additional Gemini Air's** purchased on an installment agreement subject to additional terms and conditions. If service is cancelled within the first 14 days of ordering, you must return the included device to avoid a \$120 non-return of device fee. A full refund of charges will be applied, and the early termination fees will be waived. If your service is cancelled after 14 days, you can continue to access DIRECTV through the end of the bill period, but there is no refund or credit for partial-month or unwatched content. See cancellationpolicy.stream.directv.com for more details. If you are subject to a lease agreement, \$7/mo. lease fee per each additional device will be charged on your account. **Lease Equipment Non-Return-Fees:** If you cancel your service, you must return your leased equipment. Failure to return any equipment will result in fees of \$120 for each DIRECTV device. **Regional Sports & Local Channels:** Regional Sports available with CHOICE and above. Not available in select areas. Channels vary by package & billing region. Device may need to be in billing region in order to view. **Limits:** Programming subject to blackout restrictions. **Premium Channels Offer:** Access Max through Max app or max.com with your DIRECTV log-in credentials. **Visit directv.com to verify/create your account.** **Use of Max is subject to its own terms and conditions, see max.com/terms-of-use for details. Programming and content subj. to change.** Requires account to stay in good standing. Upon cancellation of your video service you may lose access to Max. If you cancel your service, you will no longer be eligible for this offer. **Limits:** Access to one Max account per DIRECTV account holder. May not be stackable w/other offers, credits or discounts. To learn more, visit directv.com/max. **MAX is used under license. DIRECTV Svc Terms: Subject to Equipment Lease** (equipment lease not available in select sales channels) & **Customer Agreement.** Taxes, surcharges, add-on programming (including premium channels), DIRECTV TECH PROTECT, transactional fees, and Federal Cost Recovery Fee are not included in two-year price guarantee. Visit directv.com/legal/ or call for details. **All offers, programming, promotions, pricing, terms, restrictions & conditions subject to change & may be modified, discontinued, or terminated at any time without notice.** See directv.com for details. **On-demand and related channels and service marks** are the property of Home Box Office, Inc. **SHOWTIME** is a registered trademark of Showtime Networks Inc., a Paramount Company. **Paramount+** and related marks are trademarks of Paramount Pictures Corporation. All rights reserved. **Starz** and related channels and service marks are the property of Starz Entertainment, LLC. Visit starz.com for airdates/times. **MGM+** is a registered trademark of Metro-Goldwyn-Mayer Lion Corp. ©2024 DIRECTV, DIRECTV and all other DIRECTV marks are trademarks of DIRECTV, LLC. All other marks are the property of their respective owners.

Get more with Unlimited Your Way[®]



Choice is yours, guaranteed. Mix and match any of our best unlimited¹ plans

Contact: 770-421-5498 For More Information

¹AT&T may temporarily slow data speeds if the network is busy. ²Eligible plans: AT&T Unlimited Premium[®] PL, AT&T Unlimited Extra[®] EL, & AT&T Unlimited Starter[®] SL.

STEP 1 Choose your number of lines.

STEP 2 Pick any plan for each line
Prices shown are per line per month

Example monthly total for 4 lines

\$50⁹⁹ + \$50⁹⁹ + \$40⁹⁹ + \$35⁹⁹
Premium PL Premium PL Extra EL Starter SL

Our best unlimited plans include: **AT&T 5G²**, **AT&T ActiveArmorSM security⁴** and **hotspot data**. Plus unlimited talk, text, data in and between the US, Mexico and Canada⁵, and unlimited text from the U.S. to 200+ countries.

Monthly per line prices are after eligible autopay and paperless bill discount. Taxes and fees extra.*

AT&T Unlimited Premium [®] PL Plan	1 line	2 lines	3 lines	4 lines
Unlimited high-speed data that can't slow down based on usage AT&T ActiveArmor SM advanced security ⁴ A free app to monitor the dark web for your personal information, block harmful websites & more. 60GB of hotspot data per line ⁶ 4K UHD Streaming available Unlimited talk, text & high-speed data in 20 Latin American countries at no extra cost ⁷	\$85 ⁹⁹	\$75 ⁹⁹	\$60 ⁹⁹	\$50 ⁹⁹

AT&T Unlimited Extra [®] EL Plan	1 line	2 lines	3 lines	4 lines
75GB high-speed data After 75GB, AT&T may temporarily slow data speeds if the network is busy. AT&T ActiveArmor SM advanced security ⁴ A free app to monitor the dark web for your personal information, block harmful websites & more. 30GB of hotspot data per line ⁶ SD Streaming	\$75 ⁹⁹	\$65 ⁹⁹	\$50 ⁹⁹	\$40 ⁹⁹

AT&T Unlimited Starter [®] SL Plan	1 line	2 lines	3 lines	4 lines
AT&T ActiveArmor SM security ⁴ A free app to block those annoying spam calls & texts, plus more. 5GB of hotspot data per line ⁶ SD Streaming AT&T may temporarily slow data speeds if the network is busy.	\$65 ⁹⁹	\$60 ⁹⁹	\$45 ⁹⁹	\$35 ⁹⁹

³Req's compatible device. Coverage not available everywhere. Learn more at att.com/5Gforyou. ⁴Requires compatible device/service for AT&T ActiveArmor app access. Download of app req'd. Some mobile security features not avail. while roaming internationally. ⁵2G off net data speeds may apply. ⁶For hotspot data, after 5GB for AT&T Unlimited Starter[®] SL, 30GB for AT&T Unlimited Extra[®] EL or 60GB for AT&T Unlimited Premium[®] PL, speeds slowed to max. 128kbps. ⁷Coverage and data speeds vary by country. Int'l usage should not exceed Domestic usage.

*What you will see on your bill: **Featured AT&T unlimited plans:** Advertised monthly price includes monthly plan charge for talk, text and data. **Discounts:** All prices above include a \$10 per line monthly discount with AutoPay and Paperless bill which starts within two bill cycles. **AT&T employees, retirees & IMO consumers are not eligible for the AutoPay and Paperless bill discount.**

Elect

RACHEL STONE

for Gwinnett County
School Board, District 1

S: Student Success
T: Teacher Empowerment
O: Opportunities for ALL
N: Nurturing School
Environment
E: Equity in Education

With over 10 years of experience in education law, policy, teaching, and research, I am paving the way to educational success, one STONE at a time!

Early Voting: April 29 - May 17

Please request a non-partisan ballot!



Voter Information

FOR MORE INFORMATION,

GO TO

RachelStoneDistrict1.org



Scan to pay

Perfect Gifts for those who
are difficult to buy for!



Our unique, one of a kind art will
make your shopping a breeze.

Harrison Vintage Designs

lorraine@aboutmagazines.net • 770-289-9621 • www.myvintageart.com
Visit us online or at local arts festivals.



For Advertising Information Call:
Derrick Wilson, 770-421-5598
derrick@aboutgwinnettga.com