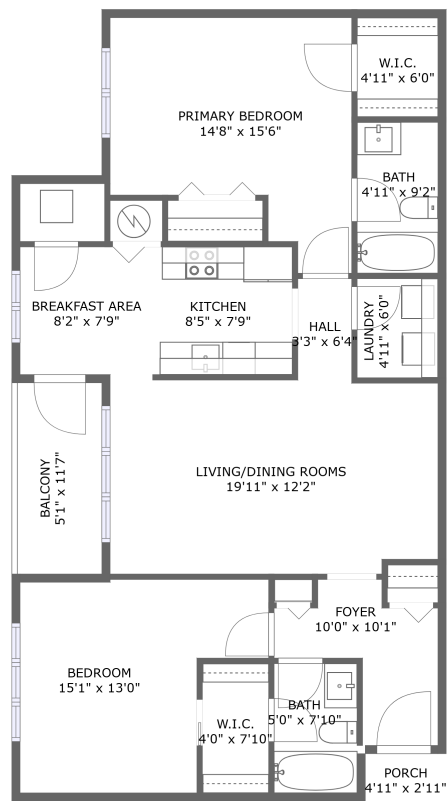



Home report


9552 Cannoneer Court, Manassas, Manassas city, Virginia,
United States, 20110, 403





FLOOR 1


Property summary


 **0** Garages


 **2** Bedrooms

 **2** Bathrooms

 **0** Half baths

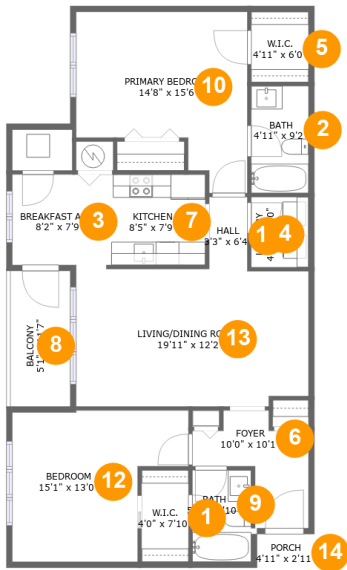
 **1** Floors

 **1,062** Gross living area sqft

 **1,136** Total sqft

Home report

9552 Cannoneer Court, Manassas, Manassas city, Virginia,
United States, 20110, 403



Room dimensions

Floor 1 Total sqft: 1136 Living area: 1062

#		Dimensions	sqft	Counted as living area
1	W.I.C.	4'0" x 7'10"	32 sq. ft	Yes
2	Bath	4'11" x 9'2"	45 sq. ft	Yes
3	Breakfast Area	8'2" x 7'9"	63 sq. ft	Yes
4	Laundry	4'11" x 6'0"	30 sq. ft	Yes
5	W.I.C.	4'11" x 6'0"	30 sq. ft	Yes
6	Foyer	10'0" x 10'1"	62 sq. ft	Yes
7	Kitchen	8'5" x 7'9"	66 sq. ft	Yes
8	Balcony	5'1" x 11'7"	60 sq. ft	No
9	Bath	5'0" x 7'10"	40 sq. ft	Yes
10	Primary Bedroom	14'8" x 15'6"	179 sq. ft	Yes

Home report

**9552 Cannoneer Court, Manassas, Manassas city, Virginia,
United States, 20110, 403**

#		Dimensions	sqft	Counted as living area
11	Hall	3'3" x 6'4"	21 sq. ft	Yes
12	Bedroom	15'1" x 13'0"	160 sq. ft	Yes
13	LIVING/DINING Rooms	19'11" x 12'2"	232 sq. ft	Yes
14	Porch	4'11" x 2'11"	14 sq. ft	No

9552 Cannoneer Court, Manassas, Manassas city, Virginia,
United States, 20110, 403

1 Floor 1 - W.I.C.



Dimensions: 4'0" x 7'10"
Area: 32 sq. ft
Counted as living area: Yes

Heated: Yes
Finished: Yes
Enclosed: Yes
Contiguous: Yes
Permitted: Yes
Wet space: No
Addition: No
Conversion: No

2 Floor 1 - Bath



Dimensions: 4'11" x 9'2"
Area: 45 sq. ft
Counted as living area: Yes

Heated: Yes
Finished: Yes
Enclosed: Yes
Contiguous: Yes
Permitted: Yes
Wet space: Yes
Addition: No
Conversion: No

9552 Cannoneer Court, Manassas, Manassas city, Virginia,
United States, 20110, 403

3 Floor 1 - Breakfast Area



Dimensions: 8'2" x 7'9"
Area: 63 sq. ft
Counted as living area: Yes

Heated: Yes
Finished: Yes
Enclosed: Yes
Contiguous: Yes
Permitted: Yes
Wet space: No
Addition: No
Conversion: No

4 Floor 1 - Laundry



Dimensions: 4'11" x 6'0"
Area: 30 sq. ft
Counted as living area: Yes

Heated: Yes
Finished: Yes
Enclosed: Yes
Contiguous: Yes
Permitted: Yes
Wet space: No
Addition: No
Conversion: No

5 Floor 1 - W.I.C.

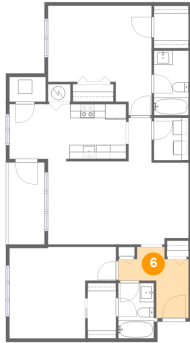


Dimensions: 4'11" x 6'0"
Area: 30 sq. ft
Counted as living area: Yes

Heated: Yes
Finished: Yes
Enclosed: Yes
Contiguous: Yes
Permitted: Yes
Wet space: No
Addition: No
Conversion: No

9552 Cannoneer Court, Manassas, Manassas city, Virginia,
United States, 20110, 403

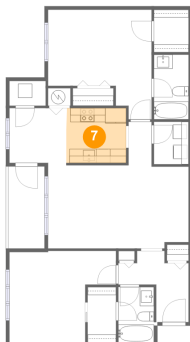
6 Floor 1 - Foyer



Dimensions: 10'0" x 10'1"
Area: 62 sq. ft
Counted as living area: Yes

Heated: Yes
Finished: Yes
Enclosed: Yes
Contiguous: Yes
Permitted: Yes
Wet space: No
Addition: No
Conversion: No

7 Floor 1 - Kitchen



Dimensions: 8'5" x 7'9"
Area: 66 sq. ft
Counted as living area: Yes

Heated: Yes
Finished: Yes
Enclosed: Yes
Contiguous: Yes
Permitted: Yes
Wet space: No
Addition: No
Conversion: No

8 Floor 1 - Balcony



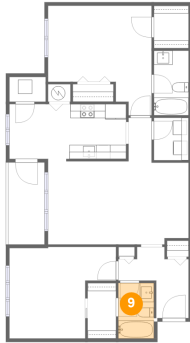
Dimensions: 5'1" x 11'7"
Area: 60 sq. ft
Counted as living area: No

Heated: No
Finished: Yes
Enclosed: No
Contiguous: Yes
Permitted: Yes
Wet space: No
Addition: No
Conversion: No

Home report

9552 Cannoneer Court, Manassas, Manassas city, Virginia,
United States, 20110, 403

9 Floor 1 - Bath



Dimensions: 5'0" x 7'10"
Area: 40 sq. ft
Counted as living area: Yes

Heated: Yes
Finished: Yes
Enclosed: Yes
Contiguous: Yes
Permitted: Yes
Wet space: Yes
Addition: No
Conversion: No

10 Floor 1 - Primary Bedroom



Dimensions: 14'8" x 15'6"
Area: 179 sq. ft
Counted as living area: Yes

Heated: Yes
Finished: Yes
Enclosed: Yes
Contiguous: Yes
Permitted: Yes
Wet space: No
Addition: No
Conversion: No

11 Floor 1 - Hall



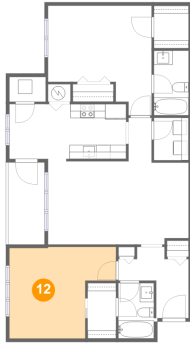
Dimensions: 3'3" x 6'4"
Area: 21 sq. ft
Counted as living area: Yes

Heated: Yes
Finished: Yes
Enclosed: Yes
Contiguous: Yes
Permitted: Yes
Wet space: No
Addition: No
Conversion: No

Home report

9552 Cannoneer Court, Manassas, Manassas city, Virginia,
United States, 20110, 403

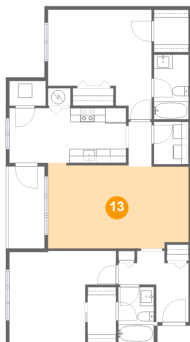
12 Floor 1 - Bedroom



Dimensions: 15'1" x 13'0"
Area: 160 sq. ft
Counted as living area: Yes

Heated: Yes
Finished: Yes
Enclosed: Yes
Contiguous: Yes
Permitted: Yes
Wet space: No
Addition: No
Conversion: No

13 Floor 1 - LIVING/DINING Rooms



Dimensions: 19'11" x 12'2"
Area: 232 sq. ft
Counted as living area: Yes

Heated: Yes
Finished: Yes
Enclosed: Yes
Contiguous: Yes
Permitted: Yes
Wet space: No
Addition: No
Conversion: No

14 Floor 1 - Porch



Dimensions: 4'11" x 2'11"
Area: 14 sq. ft
Counted as living area: No

Heated: No
Finished: Yes
Enclosed: No
Contiguous: Yes
Permitted: Yes
Wet space: No
Addition: No
Conversion: No