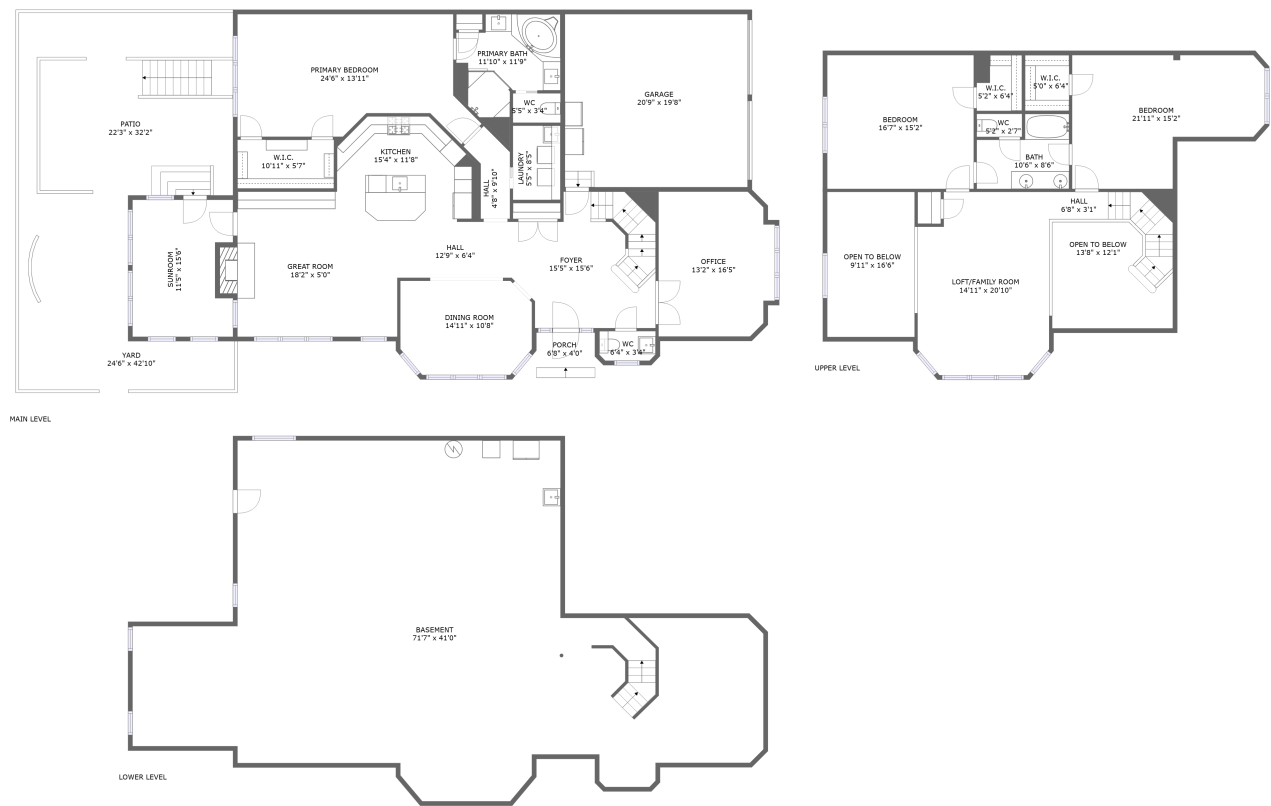


Home report

3009 Mill Island Parkway, Worman's Mill, Frederick, Frederick County, Maryland, United States, 21701



Total Area: 2890 sq. ft

Below Ground: 0 sq. ft, Floor 2: 1803 sq. ft, Floor 3: 1087 sq. ft

Excluded: Basement 1951 sq. ft, Sunroom 165 sq. ft, Patio 510 sq. ft, Porch 34 sq. ft, Garage 407 sq. ft, Fireplace 13 sq. ft, Open to below 307 sq. ft, Walls: 333 sq. ft

Property summary

 **3** Floors

 **3** Bedrooms

 **2** Bathrooms

Home report

**3009 Mill Island Parkway, Worman's Mill, Frederick, Frederick  
County, Maryland, United States, 21701**

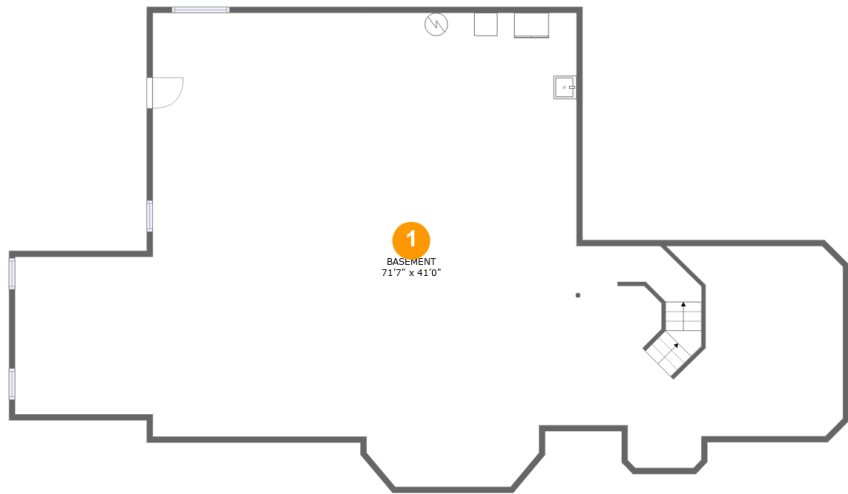


**1**  
Half baths



**1**  
Garages

3009 Mill Island Parkway, Worman's Mill, Frederick, Frederick County, Maryland, United States, 21701



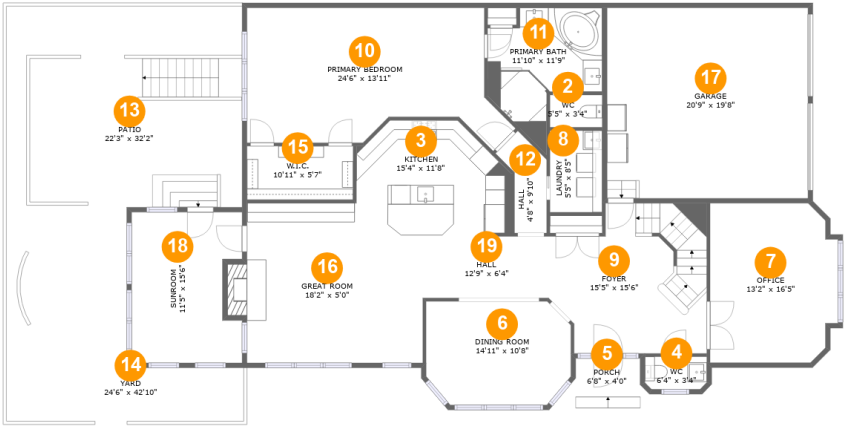
Room dimensions

Floor 1 Below ground Total:0sqft Excluded: 1951sqft

#		Max Dimensions	sqft	Included
1	Basement	71'7" x 41'0"	1945 sq. ft	No

Home report

3009 Mill Island Parkway, Worman's Mill, Frederick, Frederick County, Maryland, United States, 21701



Room dimensions

Floor 2 Total:1803sqft   Excluded: 1129sqft

#		Max Dimensions	sqft	Included
2	WC	5'5" x 3'4"	18 sq. ft	Yes
3	Kitchen	15'4" x 11'8"	170 sq. ft	Yes
4	WC	6'4" x 3'4"	21 sq. ft	Yes
5	Porch	6'8" x 4'0"	34 sq. ft	No
6	Dining Room	14'11" x 10'8"	150 sq. ft	Yes
7	Office	13'2" x 16'5"	204 sq. ft	Yes
8	Laundry	5'5" x 8'5"	46 sq. ft	Yes
9	Foyer	15'5" x 15'6"	222 sq. ft	Yes
10	Primary Bedroom	24'6" x 13'11"	324 sq. ft	Yes
11	Primary Bath	11'10" x 11'9"	117 sq. ft	Yes
12	Hall	4'8" x 9'10"	35 sq. ft	Yes

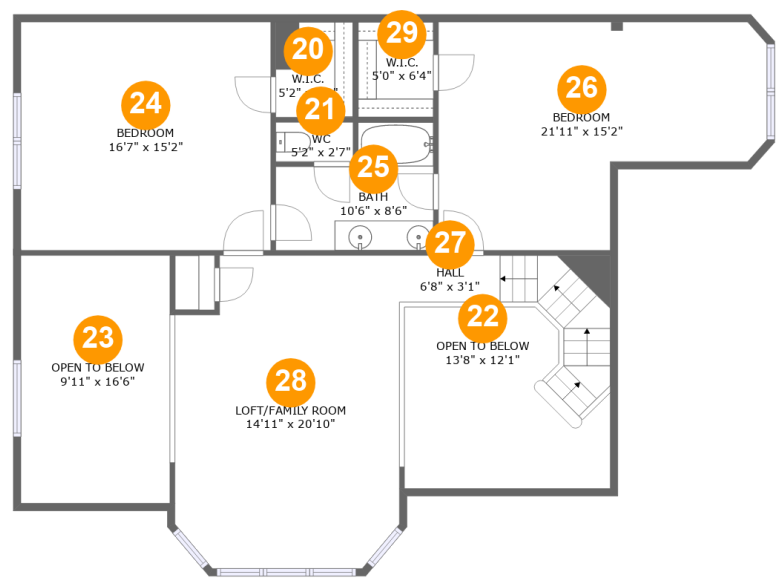
## Home report

**3009 Mill Island Parkway, Worman's Mill, Frederick, Frederick County, Maryland, United States, 21701**

#		Max Dimensions	sqft	Included
13	Patio	22'3" x 32'2"	510 sq. ft	No
14	Yard	24'6" x 42'10"	331 sq. ft	No
15	W.I.C.	10'11" x 5'7"	61 sq. ft	Yes
16	Great Room	18'2" x 5'0"	288 sq. ft	Yes
17	Garage	20'9" x 19'8"	407 sq. ft	No
18	Sunroom	11'5" x 15'6"	165 sq. ft	No
19	Hall	12'9" x 6'4"	82 sq. ft	Yes

Home report

3009 Mill Island Parkway, Worman's Mill, Frederick, Frederick County, Maryland, United States, 21701



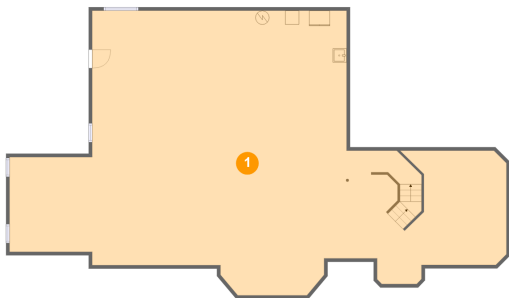
Room dimensions

Floor 3 Total:1087sqft Excluded: 307sqft

#		Max Dimensions	sqft	Included
20	W.I.C.	5'2" x 6'4"	33 sq. ft	Yes
21	WC	5'2" x 2'7"	13 sq. ft	Yes
22	Open To Below	13'8" x 12'1"	140 sq. ft	No
23	Open To Below	9'11" x 16'6"	167 sq. ft	No
24	Bedroom	16'7" x 15'2"	253 sq. ft	Yes
25	Bath	10'6" x 8'6"	73 sq. ft	Yes
26	Bedroom	21'11" x 15'2"	269 sq. ft	Yes
27	Hall	6'8" x 3'1"	77 sq. ft	Yes
28	LOFT/FAMILY Room	14'11" x 20'10"	292 sq. ft	Yes
29	W.I.C.	5'0" x 6'4"	32 sq. ft	Yes

3009 Mill Island Parkway, Worman's Mill, Frederick, Frederick  
County, Maryland, United States, 21701

1 Floor 1 - Basement



Max Dimensions: 71'7" x 41'0"  
Calculated Area: 1945 sq. ft  
Included: No

Heated: Yes  
Finished: No  
Enclosed: Yes  
Contiguous: Yes  
Permitted: Yes  
Wet space: No  
Addition: No  
Conversion: No

2 Floor 2 - WC



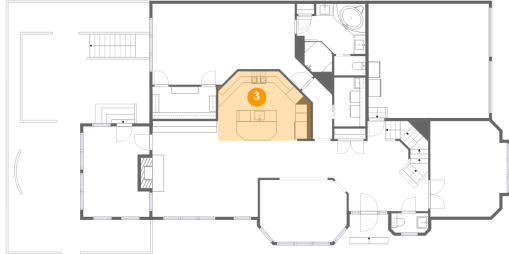
Max Dimensions: 5'5" x 3'4"  
Calculated Area: 18 sq. ft  
Included: Yes

Heated: Yes  
Finished: Yes  
Enclosed: Yes  
Contiguous: Yes  
Permitted: Yes  
Wet space: Yes  
Addition: No  
Conversion: No

## Home report

3009 Mill Island Parkway, Worman's Mill, Frederick, Frederick County, Maryland, United States, 21701

### 3 Floor 2 - Kitchen



Max Dimensions: 15'4" x 11'8"  
Calculated Area: 170 sq. ft  
Included: Yes

Heated: Yes  
Finished: Yes  
Enclosed: Yes  
Contiguous: Yes  
Permitted: Yes  
Wet space: No  
Addition: No  
Conversion: No

### 4 Floor 2 - WC



Max Dimensions: 6'4" x 3'4"  
Calculated Area: 21 sq. ft  
Included: Yes

Heated: Yes  
Finished: Yes  
Enclosed: Yes  
Contiguous: Yes  
Permitted: Yes  
Wet space: Yes  
Addition: No  
Conversion: No

### 5 Floor 2 - Porch



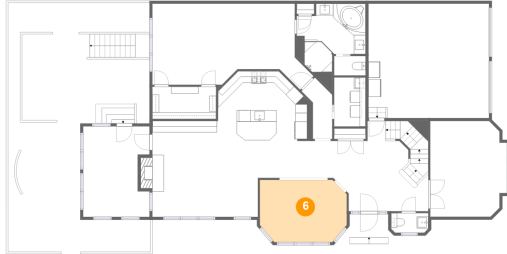
Max Dimensions: 6'8" x 4'0"  
Calculated Area: 34 sq. ft  
Included: No

Heated: No  
Finished: Yes  
Enclosed: No  
Contiguous: Yes  
Permitted: Yes  
Wet space: No  
Addition: No  
Conversion: No



3009 Mill Island Parkway, Worman's Mill, Frederick, Frederick  
County, Maryland, United States, 21701

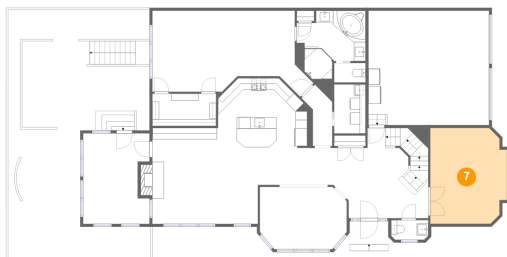
## 6 Floor 2 - Dining Room



Max Dimensions: 14'11" x 10'8"  
Calculated Area: 150 sq. ft  
Included: Yes

Heated: Yes  
Finished: Yes  
Enclosed: Yes  
Contiguous: Yes  
Permitted: Yes  
Wet space: No  
Addition: No  
Conversion: No

## 7 Floor 2 - Office



Max Dimensions: 13'2" x 16'5"  
Calculated Area: 204 sq. ft  
Included: Yes

Heated: Yes  
Finished: Yes  
Enclosed: Yes  
Contiguous: Yes  
Permitted: Yes  
Wet space: No  
Addition: No  
Conversion: No

## 8 Floor 2 - Laundry

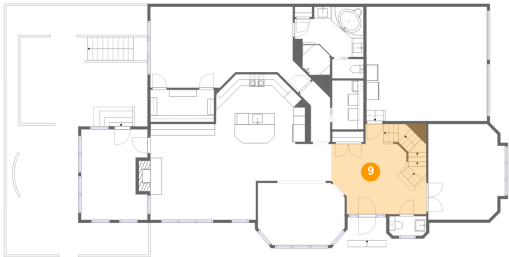


Max Dimensions: 5'5" x 8'5"  
Calculated Area: 46 sq. ft  
Included: Yes

Heated: Yes  
Finished: Yes  
Enclosed: Yes  
Contiguous: Yes  
Permitted: Yes  
Wet space: No  
Addition: No  
Conversion: No

3009 Mill Island Parkway, Worman's Mill, Frederick, Frederick  
County, Maryland, United States, 21701

9 Floor 2 - Foyer



Max Dimensions: 15'5" x 15'6"  
Calculated Area: 222 sq. ft  
Included: Yes

Heated: Yes  
Finished: Yes  
Enclosed: Yes  
Contiguous: Yes  
Permitted: Yes  
Wet space: No  
Addition: No  
Conversion: No

10 Floor 2 - Primary Bedroom



Max Dimensions: 24'6" x 13'11"  
Calculated Area: 324 sq. ft  
Included: Yes

Heated: Yes  
Finished: Yes  
Enclosed: Yes  
Contiguous: Yes  
Permitted: Yes  
Wet space: No  
Addition: No  
Conversion: No

11 Floor 2 - Primary Bath

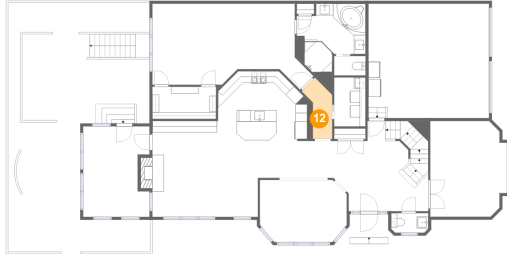


Max Dimensions: 11'10" x 11'9"  
Calculated Area: 117 sq. ft  
Included: Yes

Heated: Yes  
Finished: Yes  
Enclosed: Yes  
Contiguous: Yes  
Permitted: Yes  
Wet space: Yes  
Addition: No  
Conversion: No

3009 Mill Island Parkway, Worman's Mill, Frederick, Frederick  
County, Maryland, United States, 21701

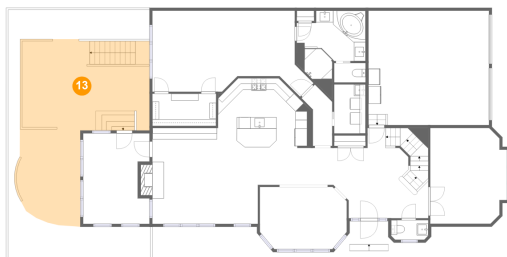
## 12 Floor 2 - Hall



Max Dimensions: 4'8" x 9'10"  
Calculated Area: 35 sq. ft  
Included: Yes

Heated: Yes  
Finished: Yes  
Enclosed: Yes  
Contiguous: Yes  
Permitted: Yes  
Wet space: No  
Addition: No  
Conversion: No

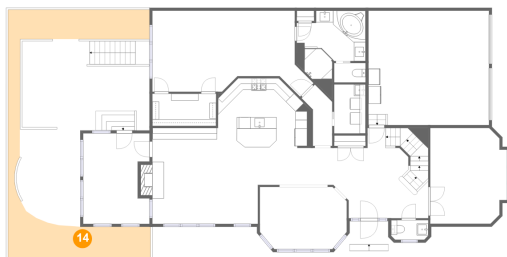
## 13 Floor 2 - Patio



Max Dimensions: 22'3" x 32'2"  
Calculated Area: 510 sq. ft  
Included: No

Heated: No  
Finished: Yes  
Enclosed: No  
Contiguous: Yes  
Permitted: Yes  
Wet space: No  
Addition: No  
Conversion: No

## 14 Floor 2 - Yard



Max Dimensions: 24'6" x 42'10"  
Calculated Area: 331 sq. ft  
Included: No

Heated: No  
Finished: No  
Enclosed: No  
Contiguous: Yes  
Permitted: No  
Wet space: No  
Addition: No  
Conversion: No

3009 Mill Island Parkway, Worman's Mill, Frederick, Frederick  
County, Maryland, United States, 21701

### 15 Floor 2 - W.I.C.



Max Dimensions: 10'11" x 5'7"  
Calculated Area: 61 sq. ft  
Included: Yes

Heated: Yes  
Finished: Yes  
Enclosed: Yes  
Contiguous: Yes  
Permitted: Yes  
Wet space: No  
Addition: No  
Conversion: No

### 16 Floor 2 - Great Room



Max Dimensions: 18'2" x 5'0"  
Calculated Area: 288 sq. ft  
Included: Yes

Heated: Yes  
Finished: Yes  
Enclosed: Yes  
Contiguous: Yes  
Permitted: Yes  
Wet space: No  
Addition: No  
Conversion: No

### 17 Floor 2 - Garage

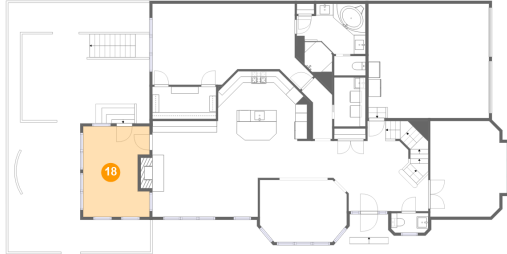


Max Dimensions: 20'9" x 19'8"  
Calculated Area: 407 sq. ft  
Included: No

Heated: No  
Finished: No  
Enclosed: Yes  
Contiguous: Yes  
Permitted: Yes  
Wet space: No  
Addition: No  
Conversion: No

3009 Mill Island Parkway, Worman's Mill, Frederick, Frederick  
County, Maryland, United States, 21701

## 18 Floor 2 - Sunroom



Max Dimensions: 11'5" x 15'6"  
Calculated Area: 165 sq. ft  
Included: No

Heated: No  
Finished: Yes  
Enclosed: No  
Contiguous: Yes  
Permitted: Yes  
Wet space: No  
Addition: No  
Conversion: No

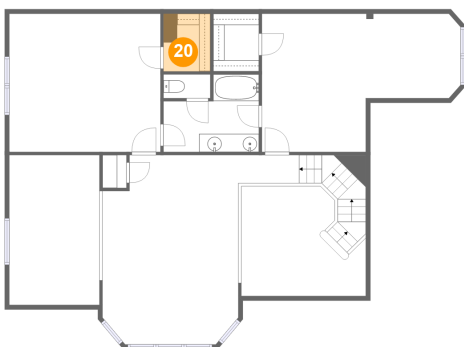
## 19 Floor 2 - Hall



Max Dimensions: 12'9" x 6'4"  
Calculated Area: 82 sq. ft  
Included: Yes

Heated: Yes  
Finished: Yes  
Enclosed: Yes  
Contiguous: Yes  
Permitted: Yes  
Wet space: No  
Addition: No  
Conversion: No

## 20 Floor 3 - W.I.C.

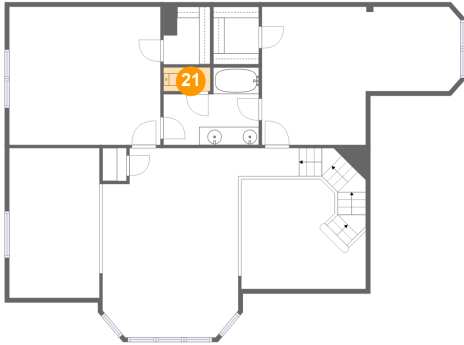


Max Dimensions: 5'2" x 6'4"  
Calculated Area: 33 sq. ft  
Included: Yes

Heated: Yes  
Finished: Yes  
Enclosed: Yes  
Contiguous: Yes  
Permitted: Yes  
Wet space: No  
Addition: No  
Conversion: No

3009 Mill Island Parkway, Worman's Mill, Frederick, Frederick  
County, Maryland, United States, 21701

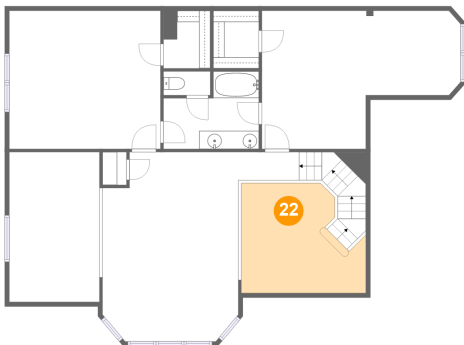
### 21 Floor 3 - WC



Max Dimensions: 5'2" x 2'7"  
Calculated Area: 13 sq. ft  
Included: Yes

Heated: Yes  
Finished: Yes  
Enclosed: Yes  
Contiguous: Yes  
Permitted: Yes  
Wet space: Yes  
Addition: No  
Conversion: No

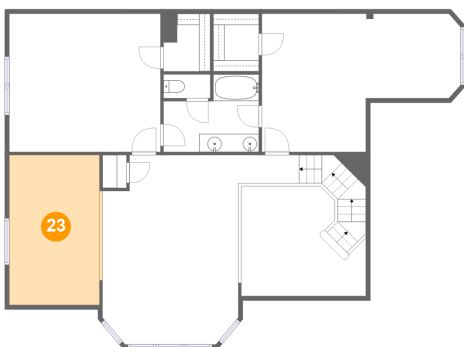
### 22 Floor 3 - Open To Below



Max Dimensions: 13'8" x 12'1"  
Calculated Area: 140 sq. ft  
Included: No

Heated: No  
Finished: No  
Enclosed: No  
Contiguous: Yes  
Permitted: No  
Wet space: No  
Addition: No  
Conversion: No

### 23 Floor 3 - Open To Below

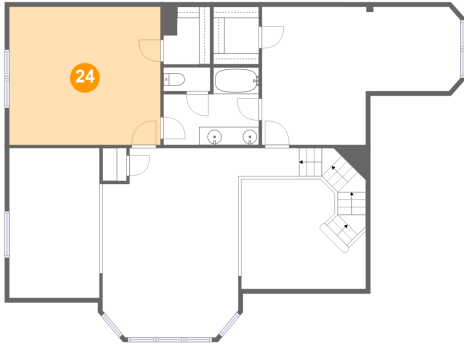


Max Dimensions: 9'11" x 16'6"  
Calculated Area: 167 sq. ft  
Included: No

Heated: No  
Finished: No  
Enclosed: No  
Contiguous: Yes  
Permitted: No  
Wet space: No  
Addition: No  
Conversion: No

3009 Mill Island Parkway, Worman's Mill, Frederick, Frederick  
County, Maryland, United States, 21701

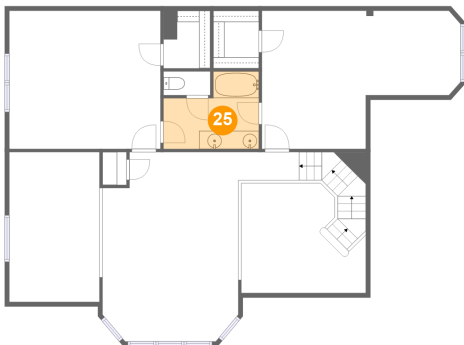
### 24 Floor 3 - Bedroom



Max Dimensions: 16'7" x 15'2"  
Calculated Area: 253 sq. ft  
Included: Yes

Heated: Yes  
Finished: Yes  
Enclosed: Yes  
Contiguous: Yes  
Permitted: Yes  
Wet space: No  
Addition: No  
Conversion: No

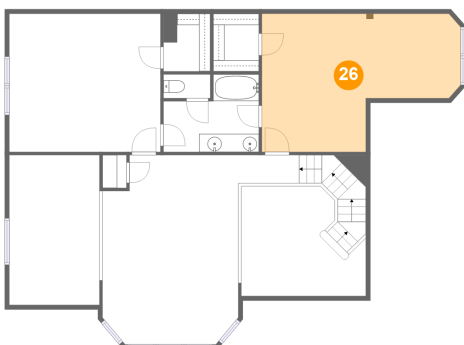
### 25 Floor 3 - Bath



Max Dimensions: 10'6" x 8'6"  
Calculated Area: 73 sq. ft  
Included: Yes

Heated: Yes  
Finished: Yes  
Enclosed: Yes  
Contiguous: Yes  
Permitted: Yes  
Wet space: Yes  
Addition: No  
Conversion: No

### 26 Floor 3 - Bedroom



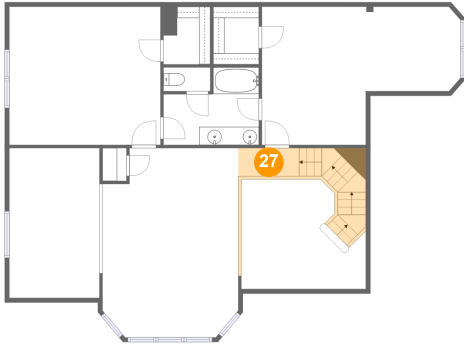
Max Dimensions: 21'11" x 15'2"  
Calculated Area: 269 sq. ft  
Included: Yes

Heated: Yes  
Finished: Yes  
Enclosed: Yes  
Contiguous: Yes  
Permitted: Yes  
Wet space: No  
Addition: No  
Conversion: No

## Home report

3009 Mill Island Parkway, Worman's Mill, Frederick, Frederick County, Maryland, United States, 21701

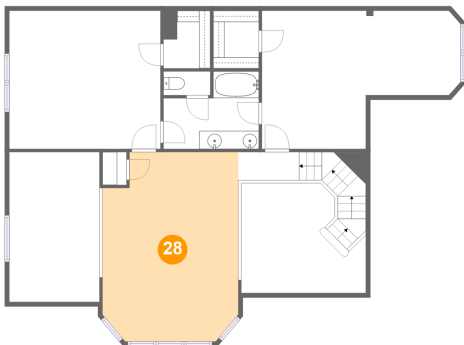
### 27 Floor 3 - Hall



Max Dimensions: 6'8" x 3'1"  
Calculated Area: 77 sq. ft  
Included: Yes

Heated: Yes  
Finished: Yes  
Enclosed: Yes  
Contiguous: Yes  
Permitted: Yes  
Wet space: No  
Addition: No  
Conversion: No

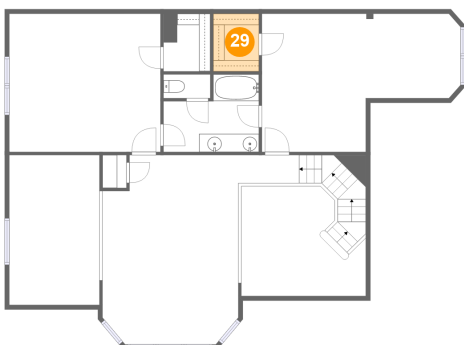
### 28 Floor 3 - LOFT/FAMILY Room



Max Dimensions: 14'11" x 20'10"  
Calculated Area: 292 sq. ft  
Included: Yes

Heated: Yes  
Finished: Yes  
Enclosed: Yes  
Contiguous: Yes  
Permitted: Yes  
Wet space: No  
Addition: No  
Conversion: No

### 29 Floor 3 - W.I.C.



Max Dimensions: 5'0" x 6'4"  
Calculated Area: 32 sq. ft  
Included: Yes

Heated: Yes  
Finished: Yes  
Enclosed: Yes  
Contiguous: Yes  
Permitted: Yes  
Wet space: No  
Addition: No  
Conversion: No