

Home report

21663 Oatlands Road, Aldie, Loudoun County, Virginia, United States, 20105



Total Area: 3653 sq. ft

Below Ground: 846 sq. ft, Floor 2: 1906 sq. ft, Floor 3: 901 sq. ft

Excluded: Outdoor Patio 1121 sq. ft, Storage 81 sq. ft, Outdoor Porch 99 sq. ft, Walls: 264 sq. ft

Property summary



3

Floors



4

Bedrooms

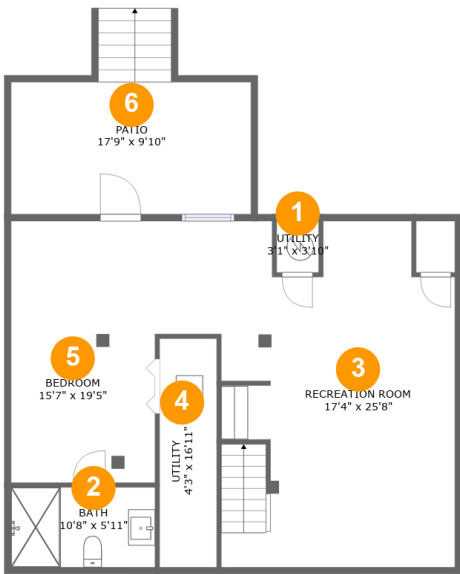


4

Bathrooms

Home report

21663 Oatlands Road, Aldie, Loudoun County, Virginia, United States, 20105



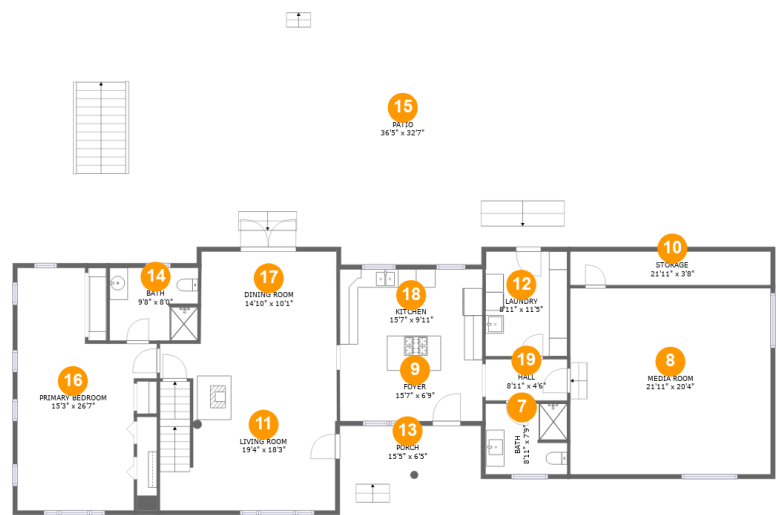
Room dimensions

Floor 1 Below ground Total:846sqft    Excluded: 204sqft

#		Max Dimensions	sqft	Included
1	Utility	3'1" x 3'10"	12 sq. ft	Yes
2	Bath	10'8" x 5'11"	63 sq. ft	Yes
3	Recreation Room	17'4" x 25'8"	412 sq. ft	Yes
4	Utility	4'3" x 16'11"	72 sq. ft	Yes
5	Bedroom	15'7" x 19'5"	248 sq. ft	Yes
6	Patio	17'9" x 9'10"	204 sq. ft	No

Home report

21663 Oatlands Road, Aldie, Loudoun County, Virginia, United States, 20105



Room dimensions

Floor 2

Total:1906sqft

Excluded: 1097sqft

#		Max Dimensions	sqft	Included
7	Bath	8'11" x 7'9"	68 sq. ft	Yes
8	Media Room	21'11" x 20'4"	447 sq. ft	Yes
9	Foyer	15'7" x 6'9"	105 sq. ft	Yes
10	Storage	21'11" x 3'8"	81 sq. ft	No
11	Living Room	19'4" x 18'3"	347 sq. ft	Yes
12	Laundry	8'11" x 11'5"	102 sq. ft	Yes
13	Porch	15'5" x 6'5"	99 sq. ft	No
14	Bath	9'8" x 8'0"	76 sq. ft	Yes
15	Patio	36'5" x 32'7"	918 sq. ft	No
16	Primary Bedroom	15'3" x 26'7"	304 sq. ft	Yes
17	Dining Room	14'10" x 10'1"	150 sq. ft	Yes

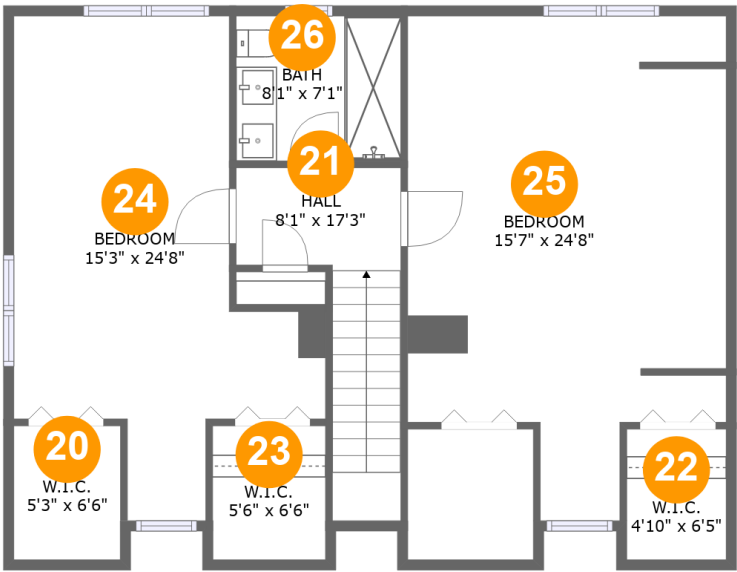
Home report

21663 Oatlands Road, Aldie, Loudoun County, Virginia, United States, 20105

#		Max Dimensions	sqft	Included
18	Kitchen	15'7" x 9'11"	155 sq. ft	Yes
19	Hall	8'11" x 4'6"	40 sq. ft	Yes

Home report

21663 Oatlands Road, Aldie, Loudoun County, Virginia, United States, 20105



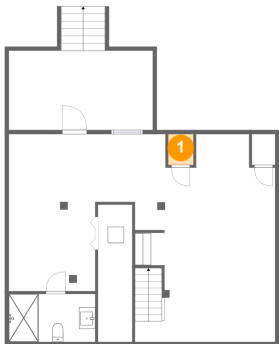
Room dimensions

Floor 3 Total:901sqft   Excluded: 0sqft

#		Max Dimensions	sqft	Included
20	W.I.C.	5'3" x 6'6"	34 sq. ft	Yes
21	Hall	8'1" x 17'3"	80 sq. ft	Yes
22	W.I.C.	4'10" x 6'5"	31 sq. ft	Yes
23	W.I.C.	5'6" x 6'6"	36 sq. ft	Yes
24	Bedroom	15'3" x 24'8"	251 sq. ft	Yes
25	Bedroom	15'7" x 24'8"	325 sq. ft	Yes
26	Bath	8'1" x 7'1"	57 sq. ft	Yes

21663 Oatlands Road, Aldie, Loudoun County, Virginia, United States, 20105

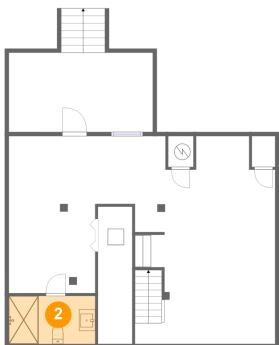
1 Floor 1 - Utility



Max Dimensions: 3'1" x 3'10"  
Calculated Area: 12 sq. ft  
Included: Yes

Heated: Yes  
Finished: Yes  
Enclosed: Yes  
Contiguous: Yes  
Permitted: Yes  
Wet space: No  
Addition: No  
Conversion: No

2 Floor 1 - Bath

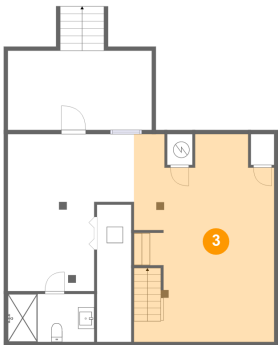


Max Dimensions: 10'8" x 5'11"  
Calculated Area: 63 sq. ft  
Included: Yes

Heated: Yes  
Finished: Yes  
Enclosed: Yes  
Contiguous: Yes  
Permitted: Yes  
Wet space: Yes  
Addition: No  
Conversion: No

21663 Oatlands Road, Aldie, Loudoun County, Virginia, United States, 20105

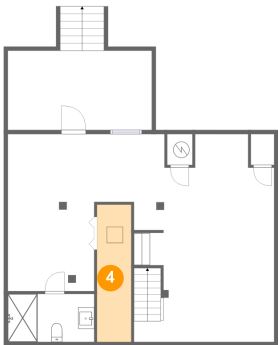
3 Floor 1 - Recreation Room



Max Dimensions: 17'4" x 25'8"  
Calculated Area: 412 sq. ft  
Included: Yes

Heated: Yes  
Finished: Yes  
Enclosed: Yes  
Contiguous: Yes  
Permitted: Yes  
Wet space: No  
Addition: No  
Conversion: No

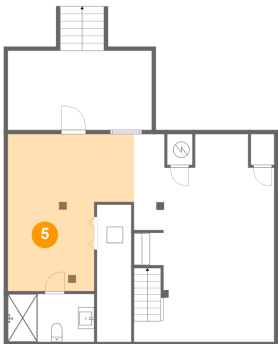
4 Floor 1 - Utility



Max Dimensions: 4'3" x 16'11"  
Calculated Area: 72 sq. ft  
Included: Yes

Heated: Yes  
Finished: Yes  
Enclosed: Yes  
Contiguous: Yes  
Permitted: Yes  
Wet space: No  
Addition: No  
Conversion: No

5 Floor 1 - Bedroom

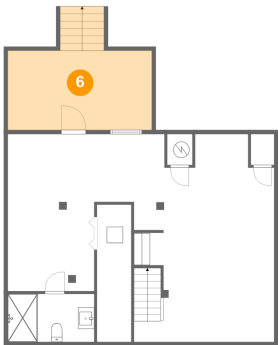


Max Dimensions: 15'7" x 19'5"  
Calculated Area: 248 sq. ft  
Included: Yes

Heated: Yes  
Finished: Yes  
Enclosed: Yes  
Contiguous: Yes  
Permitted: Yes  
Wet space: No  
Addition: No  
Conversion: No

21663 Oatlands Road, Aldie, Loudoun County, Virginia, United States, 20105

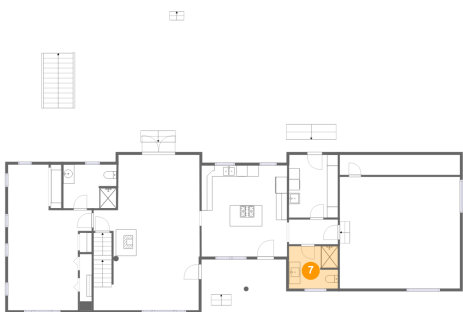
6 Floor 1 - Patio



Max Dimensions: 17'9" x 9'10"  
Calculated Area: 204 sq. ft  
Included: No

Heated: No  
Finished: Yes  
Enclosed: No  
Contiguous: Yes  
Permitted: Yes  
Wet space: No  
Addition: No  
Conversion: No

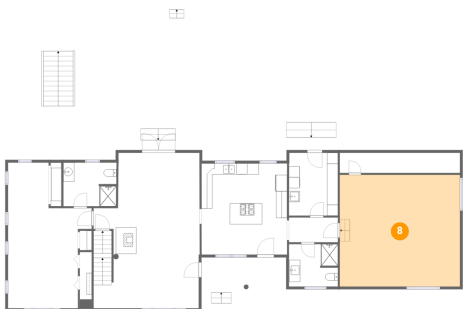
7 Floor 2 - Bath



Max Dimensions: 8'11" x 7'9"  
Calculated Area: 68 sq. ft  
Included: Yes

Heated: Yes  
Finished: Yes  
Enclosed: Yes  
Contiguous: Yes  
Permitted: Yes  
Wet space: Yes  
Addition: No  
Conversion: No

8 Floor 2 - Media Room



Max Dimensions: 21'11" x 20'4"  
Calculated Area: 447 sq. ft  
Included: Yes

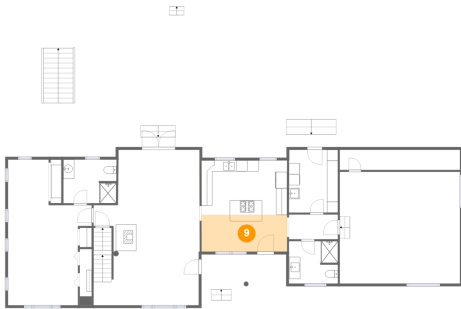
Heated: Yes  
Finished: Yes  
Enclosed: Yes  
Contiguous: Yes  
Permitted: Yes  
Wet space: No  
Addition: No  
Conversion: No



## Home report

21663 Oatlands Road, Aldie, Loudoun County, Virginia, United States, 20105

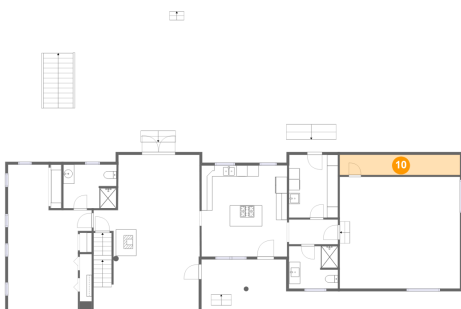
### 9 Floor 2 - Foyer



Max Dimensions: 15'7" x 6'9"  
Calculated Area: 105 sq. ft  
Included: Yes

Heated: Yes  
Finished: Yes  
Enclosed: Yes  
Contiguous: Yes  
Permitted: Yes  
Wet space: No  
Addition: No  
Conversion: No

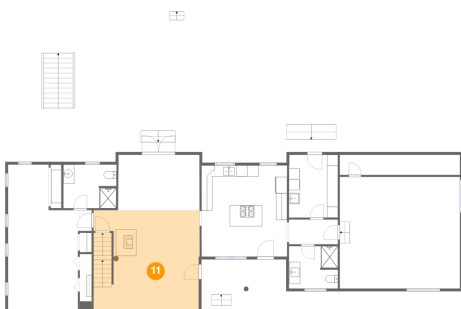
### 10 Floor 2 - Storage



Max Dimensions: 21'11" x 3'8"  
Calculated Area: 81 sq. ft  
Included: No

Heated: No  
Finished: No  
Enclosed: No  
Contiguous: Yes  
Permitted: Yes  
Wet space: No  
Addition: No  
Conversion: No

### 11 Floor 2 - Living Room



Max Dimensions: 19'4" x 18'3"  
Calculated Area: 347 sq. ft  
Included: Yes

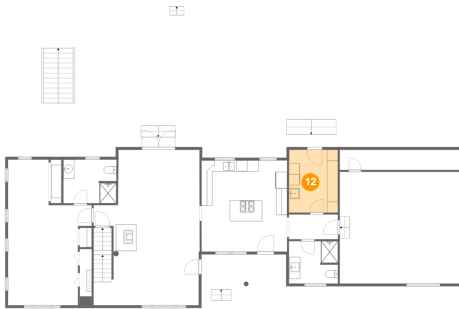
Heated: Yes  
Finished: Yes  
Enclosed: Yes  
Contiguous: Yes  
Permitted: Yes  
Wet space: No  
Addition: No  
Conversion: No

## Home report

21663 Oatlands Road, Aldie, Loudoun County, Virginia, United States, 20105

### 12 Floor 2 - Laundry

---

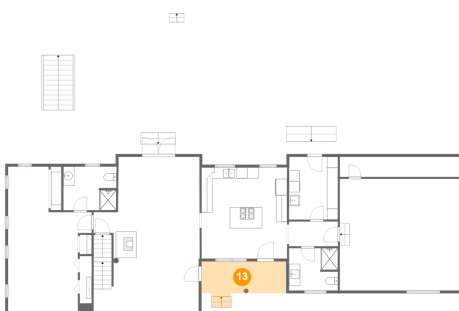


Max Dimensions: 8'11" x 11'5"  
Calculated Area: 102 sq. ft  
Included: Yes

Heated: Yes  
Finished: Yes  
Enclosed: Yes  
Contiguous: Yes  
Permitted: Yes  
Wet space: No  
Addition: No  
Conversion: No

### 13 Floor 2 - Porch

---

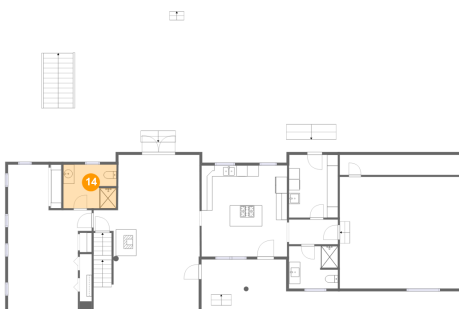


Max Dimensions: 15'5" x 6'5"  
Calculated Area: 99 sq. ft  
Included: No

Heated: No  
Finished: Yes  
Enclosed: No  
Contiguous: Yes  
Permitted: Yes  
Wet space: No  
Addition: No  
Conversion: No

### 14 Floor 2 - Bath

---



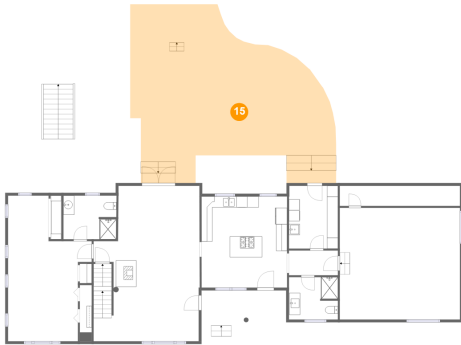
Max Dimensions: 9'8" x 8'0"  
Calculated Area: 76 sq. ft  
Included: Yes

Heated: Yes  
Finished: Yes  
Enclosed: Yes  
Contiguous: Yes  
Permitted: Yes  
Wet space: Yes  
Addition: No  
Conversion: No

## Home report

21663 Oatlands Road, Aldie, Loudoun County, Virginia, United States, 20105

### 15 Floor 2 - Patio



Max Dimensions: 36'5" x 32'7"  
Calculated Area: 918 sq. ft  
Included: No

Heated: No  
Finished: Yes  
Enclosed: No  
Contiguous: Yes  
Permitted: Yes  
Wet space: No  
Addition: No  
Conversion: No

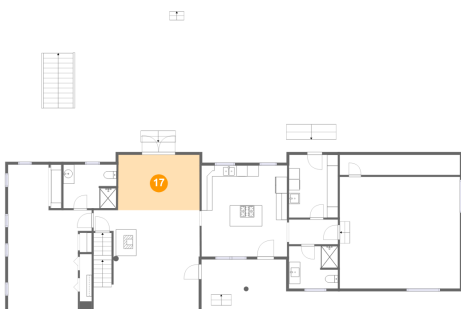
### 16 Floor 2 - Primary Bedroom



Max Dimensions: 15'3" x 26'7"  
Calculated Area: 304 sq. ft  
Included: Yes

Heated: Yes  
Finished: Yes  
Enclosed: Yes  
Contiguous: Yes  
Permitted: Yes  
Wet space: No  
Addition: No  
Conversion: No

### 17 Floor 2 - Dining Room



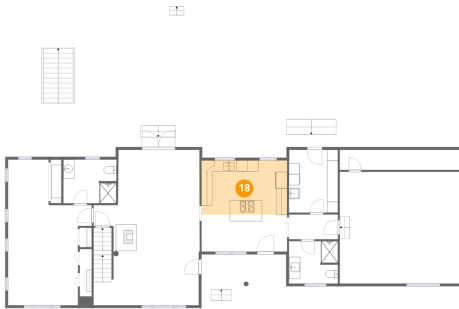
Max Dimensions: 14'10" x 10'1"  
Calculated Area: 150 sq. ft  
Included: Yes

Heated: Yes  
Finished: Yes  
Enclosed: Yes  
Contiguous: Yes  
Permitted: Yes  
Wet space: No  
Addition: No  
Conversion: No

## Home report

21663 Oatlands Road, Aldie, Loudoun County, Virginia, United States, 20105

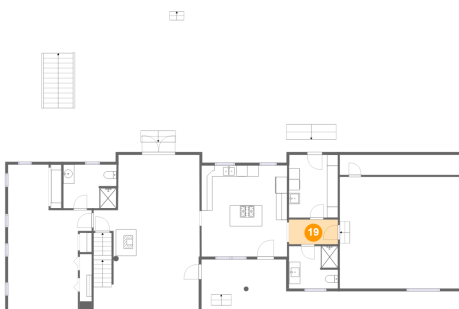
### 18 Floor 2 - Kitchen



Max Dimensions: 15'7" x 9'11"  
Calculated Area: 155 sq. ft  
Included: Yes

Heated: Yes  
Finished: Yes  
Enclosed: Yes  
Contiguous: Yes  
Permitted: Yes  
Wet space: No  
Addition: No  
Conversion: No

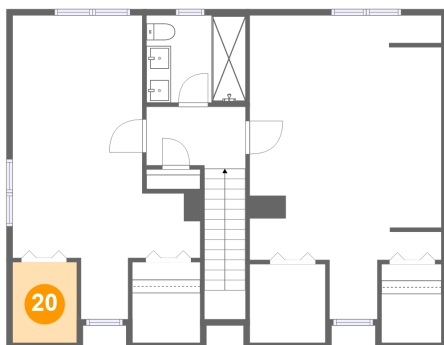
### 19 Floor 2 - Hall



Max Dimensions: 8'11" x 4'6"  
Calculated Area: 40 sq. ft  
Included: Yes

Heated: Yes  
Finished: Yes  
Enclosed: Yes  
Contiguous: Yes  
Permitted: Yes  
Wet space: No  
Addition: No  
Conversion: No

### 20 Floor 3 - W.I.C.

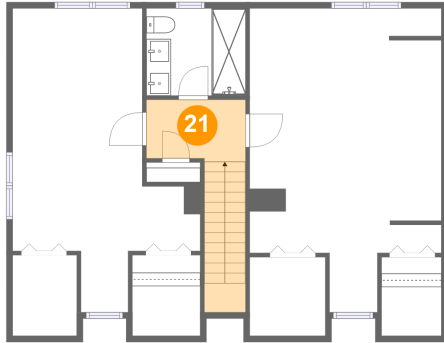


Max Dimensions: 5'3" x 6'6"  
Calculated Area: 34 sq. ft  
Included: Yes

Heated: Yes  
Finished: Yes  
Enclosed: Yes  
Contiguous: Yes  
Permitted: Yes  
Wet space: No  
Addition: No  
Conversion: No

21663 Oatlands Road, Aldie, Loudoun County, Virginia, United States, 20105

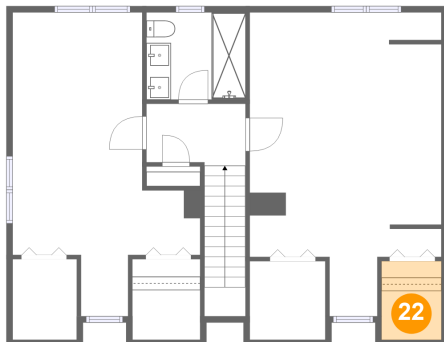
### 21 Floor 3 - Hall



Max Dimensions: 8'1" x 17'3"  
Calculated Area: 80 sq. ft  
Included: Yes

Heated: Yes  
Finished: Yes  
Enclosed: Yes  
Contiguous: Yes  
Permitted: Yes  
Wet space: No  
Addition: No  
Conversion: No

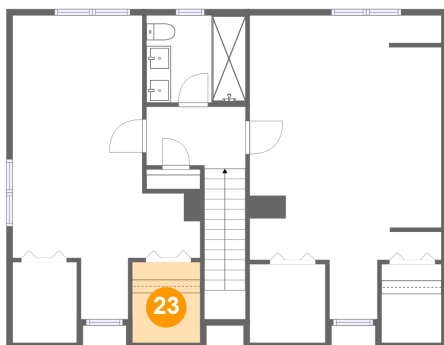
### 22 Floor 3 - W.I.C.



Max Dimensions: 4'10" x 6'5"  
Calculated Area: 31 sq. ft  
Included: Yes

Heated: Yes  
Finished: Yes  
Enclosed: Yes  
Contiguous: Yes  
Permitted: Yes  
Wet space: No  
Addition: No  
Conversion: No

### 23 Floor 3 - W.I.C.

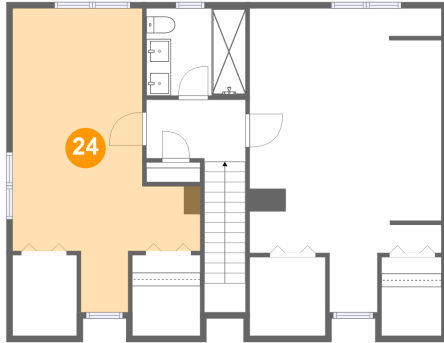


Max Dimensions: 5'6" x 6'6"  
Calculated Area: 36 sq. ft  
Included: Yes

Heated: Yes  
Finished: Yes  
Enclosed: Yes  
Contiguous: Yes  
Permitted: Yes  
Wet space: No  
Addition: No  
Conversion: No

21663 Oatlands Road, Aldie, Loudoun County, Virginia, United States, 20105

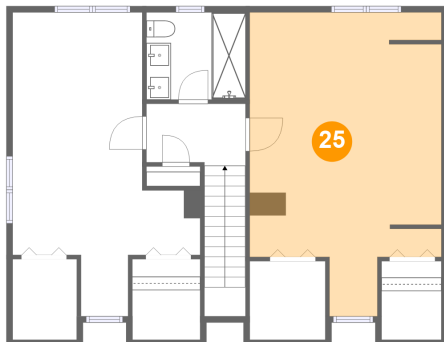
### 24 Floor 3 - Bedroom



Max Dimensions: 15'3" x 24'8"  
Calculated Area: 251 sq. ft  
Included: Yes

Heated: Yes  
Finished: Yes  
Enclosed: Yes  
Contiguous: Yes  
Permitted: Yes  
Wet space: No  
Addition: No  
Conversion: No

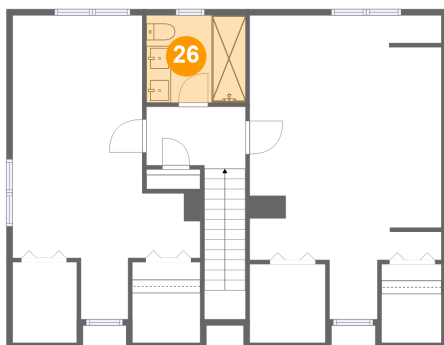
### 25 Floor 3 - Bedroom



Max Dimensions: 15'7" x 24'8"  
Calculated Area: 325 sq. ft  
Included: Yes

Heated: Yes  
Finished: Yes  
Enclosed: Yes  
Contiguous: Yes  
Permitted: Yes  
Wet space: No  
Addition: No  
Conversion: No

### 26 Floor 3 - Bath



Max Dimensions: 8'1" x 7'1"  
Calculated Area: 57 sq. ft  
Included: Yes

Heated: Yes  
Finished: Yes  
Enclosed: Yes  
Contiguous: Yes  
Permitted: Yes  
Wet space: Yes  
Addition: No  
Conversion: No