

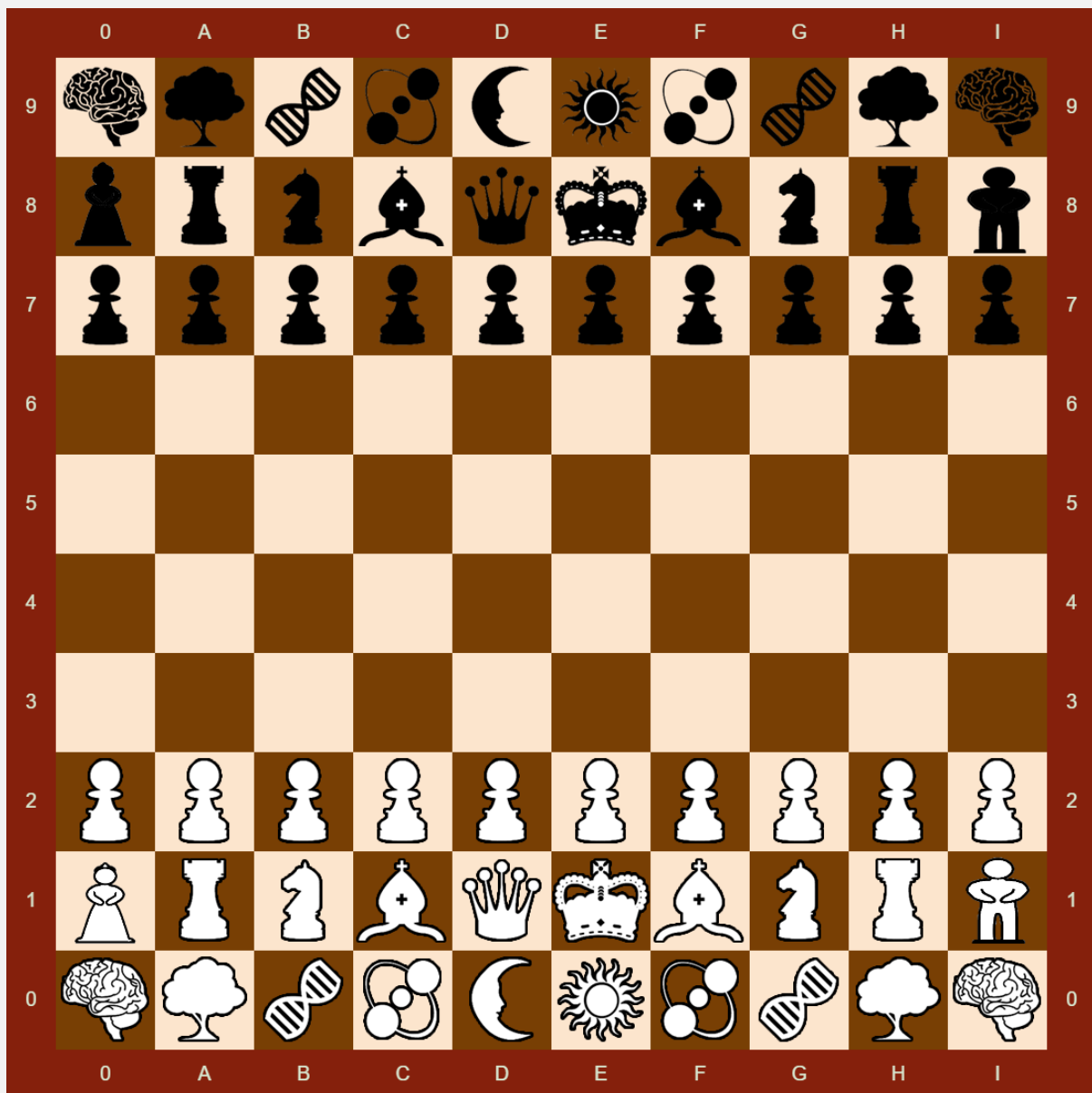




How is the board set up?

The board is set up in the same way as standard Chess. The board is set down in such a way that both players are looking at it so the black square is on the left hand, the white square is to fall to your right hand.

Remember also that the queen sits on the same colour square as her colour and the moon sits behind the queen.

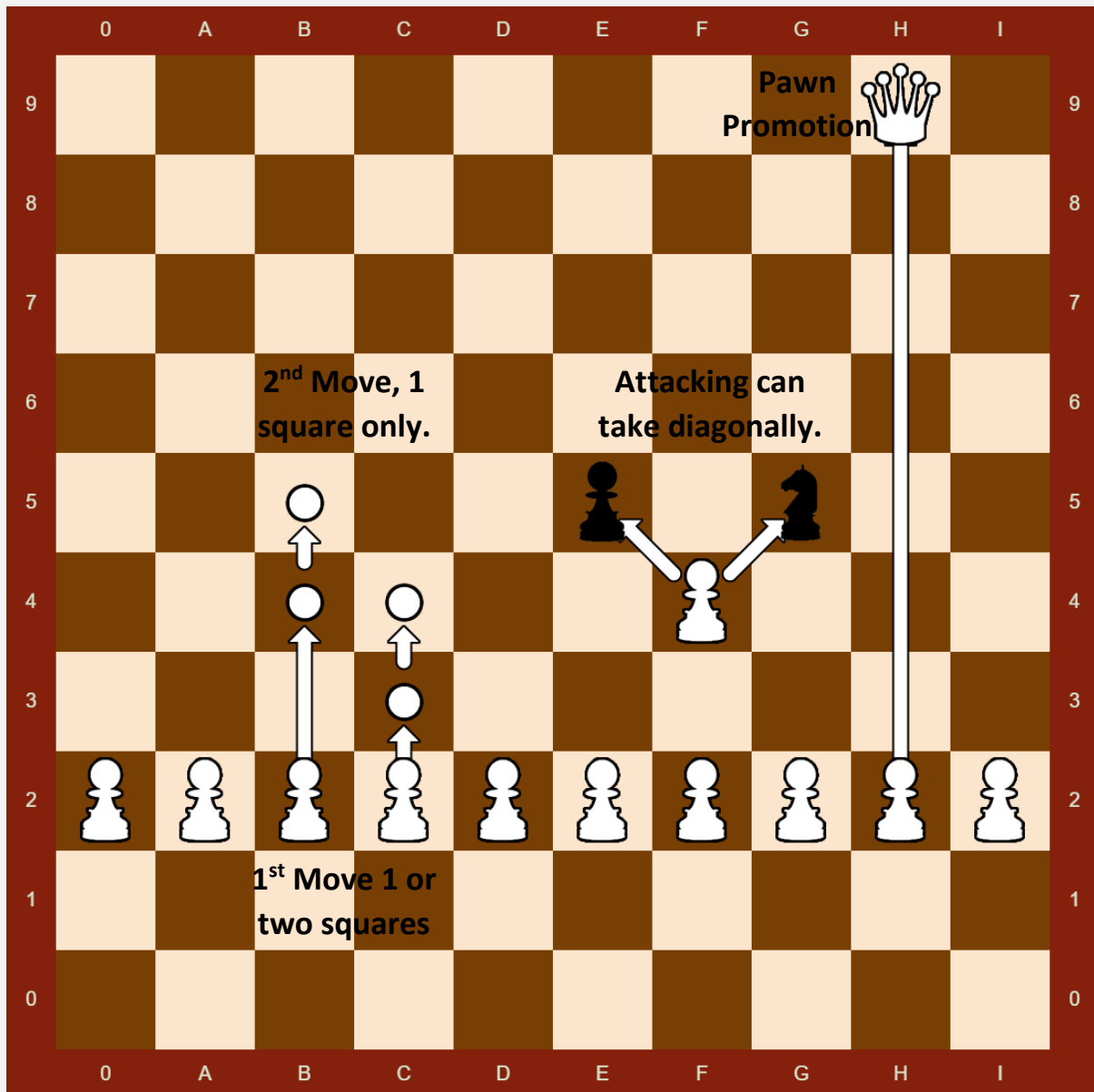


Who goes first?

Traditionally whites go first, With SimChess it is decided between the two players. Heads or tails short straws or rock, paper, scissors...you the players decide.



How does the pawn move?



Pawns only move forward unless taking an opponent's piece, at which time they move diagonally one square. On the first move a pawn can move one or two spaces provided the path is clear.

Pawn Promotion.

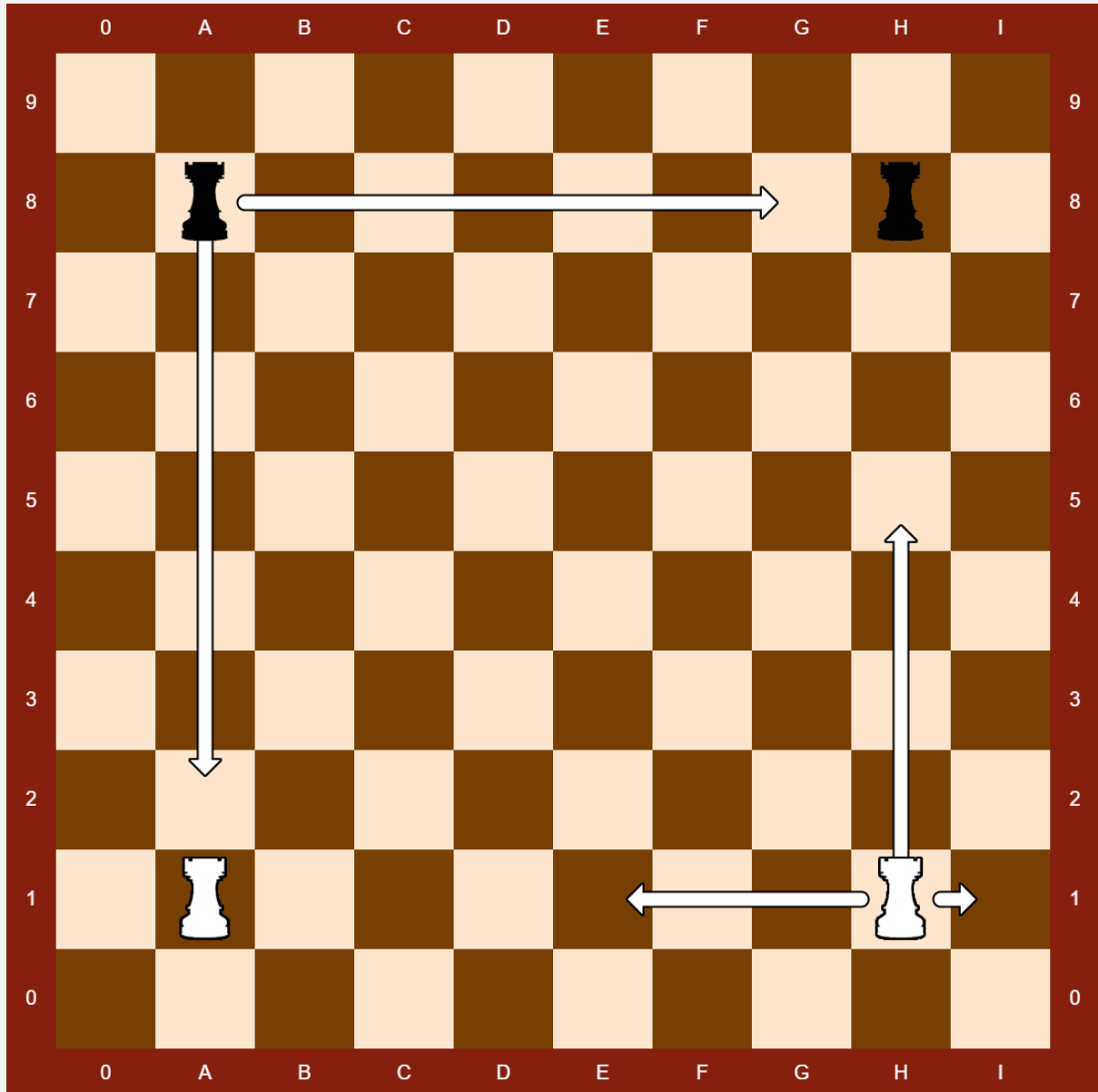
If a pawn reaches the other side of the board, it is promoted to any other piece except a king.

Pawn En Passant

This is a special move that can be undertaken in the following conditions. A pawn on the 5th rank may capture an enemy pawn on an adjacent file that has moved two squares in a single move.



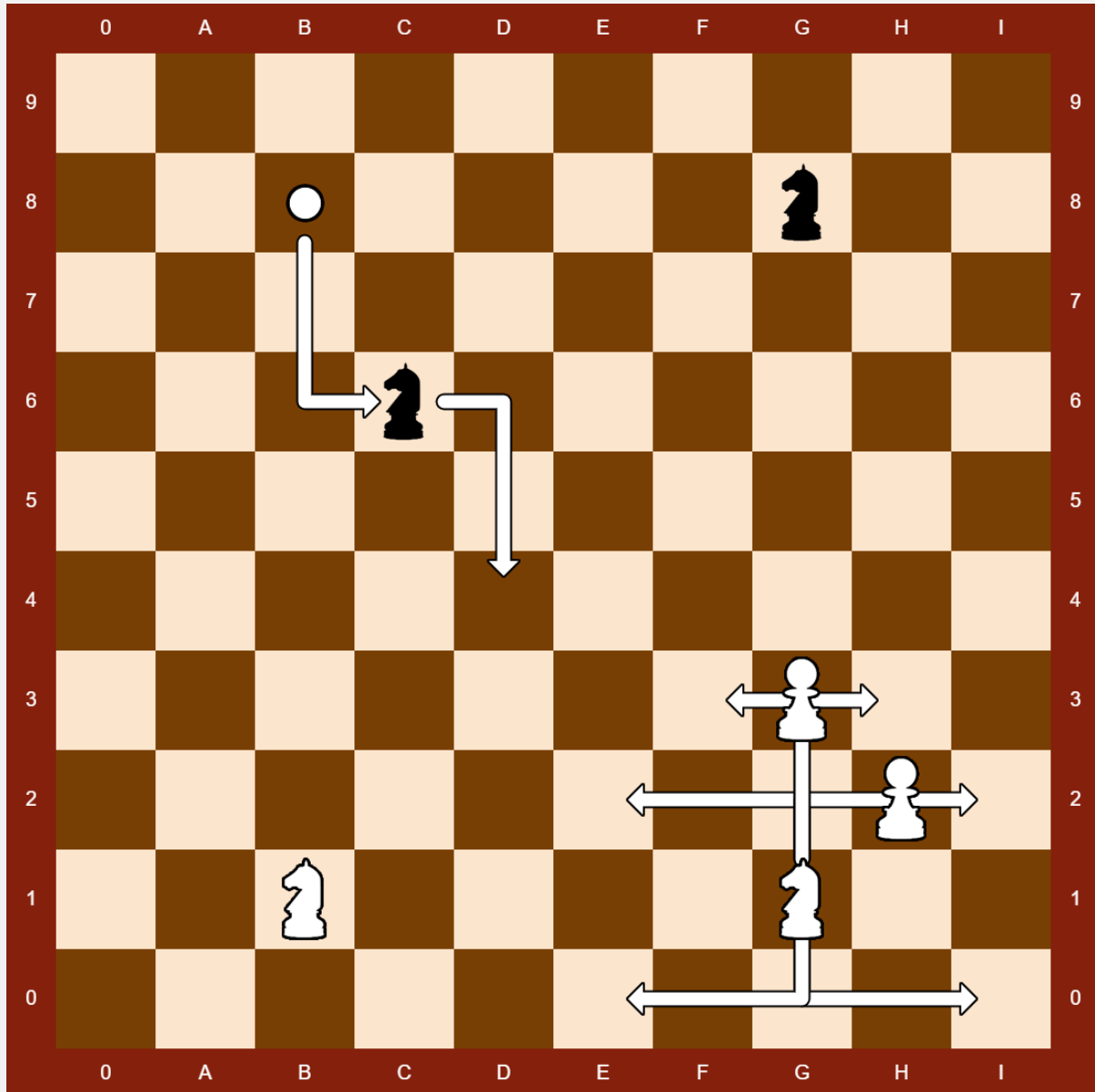
How does the Rook move?



The Castle or Rook moves as many squares as it likes as long as the path is clear. It can only move in one direction at a time either up or down or side to side.



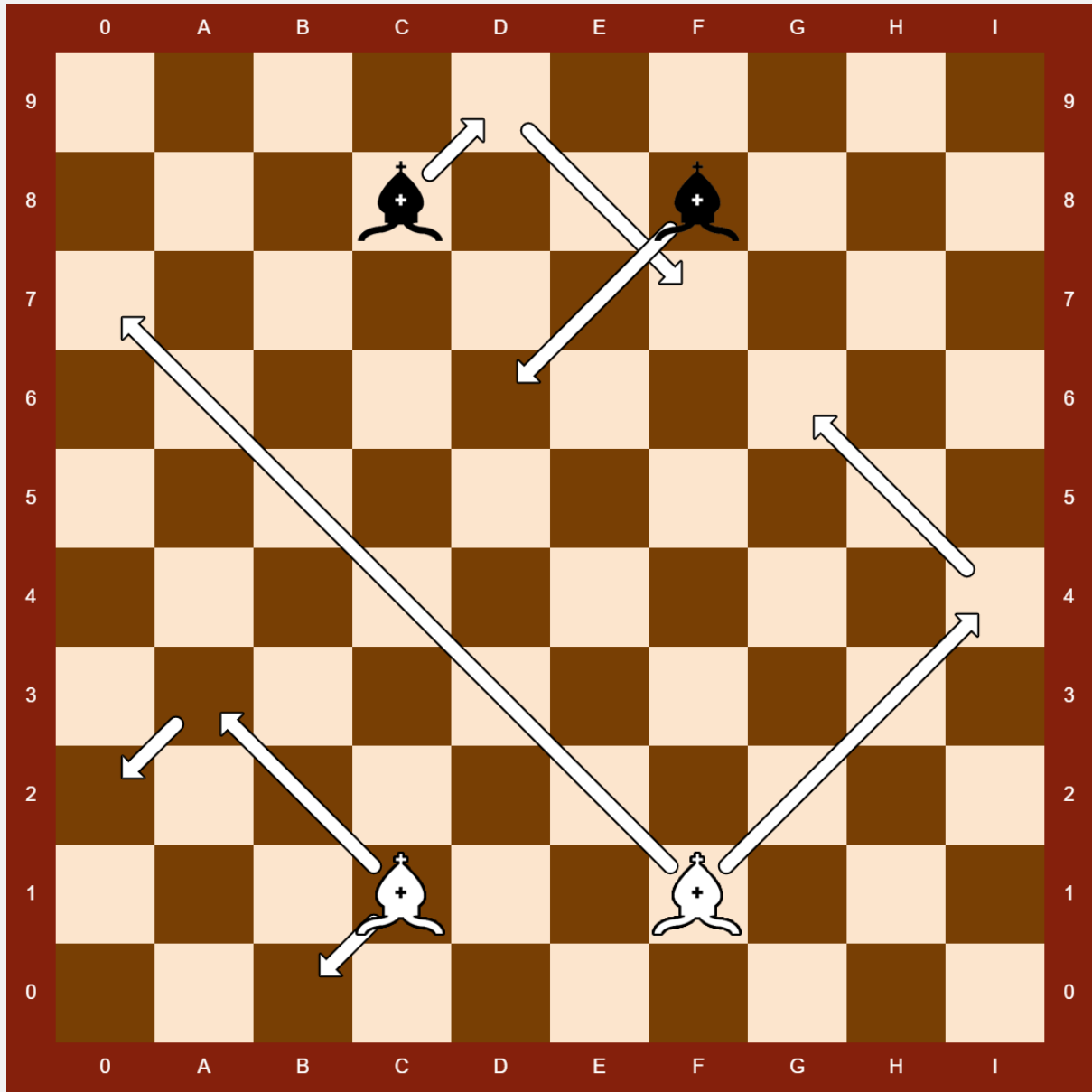
How does the Knight move?



The Knight moves in a "L" shape, two squares in one direction up or down the ranks or files and then a change in direction by 90°. The knight can jump over its own pieces or an opponent's piece. It can take an opponent's piece on the last move. The knight cant jump to a square that is occupied by one of your own pieces.



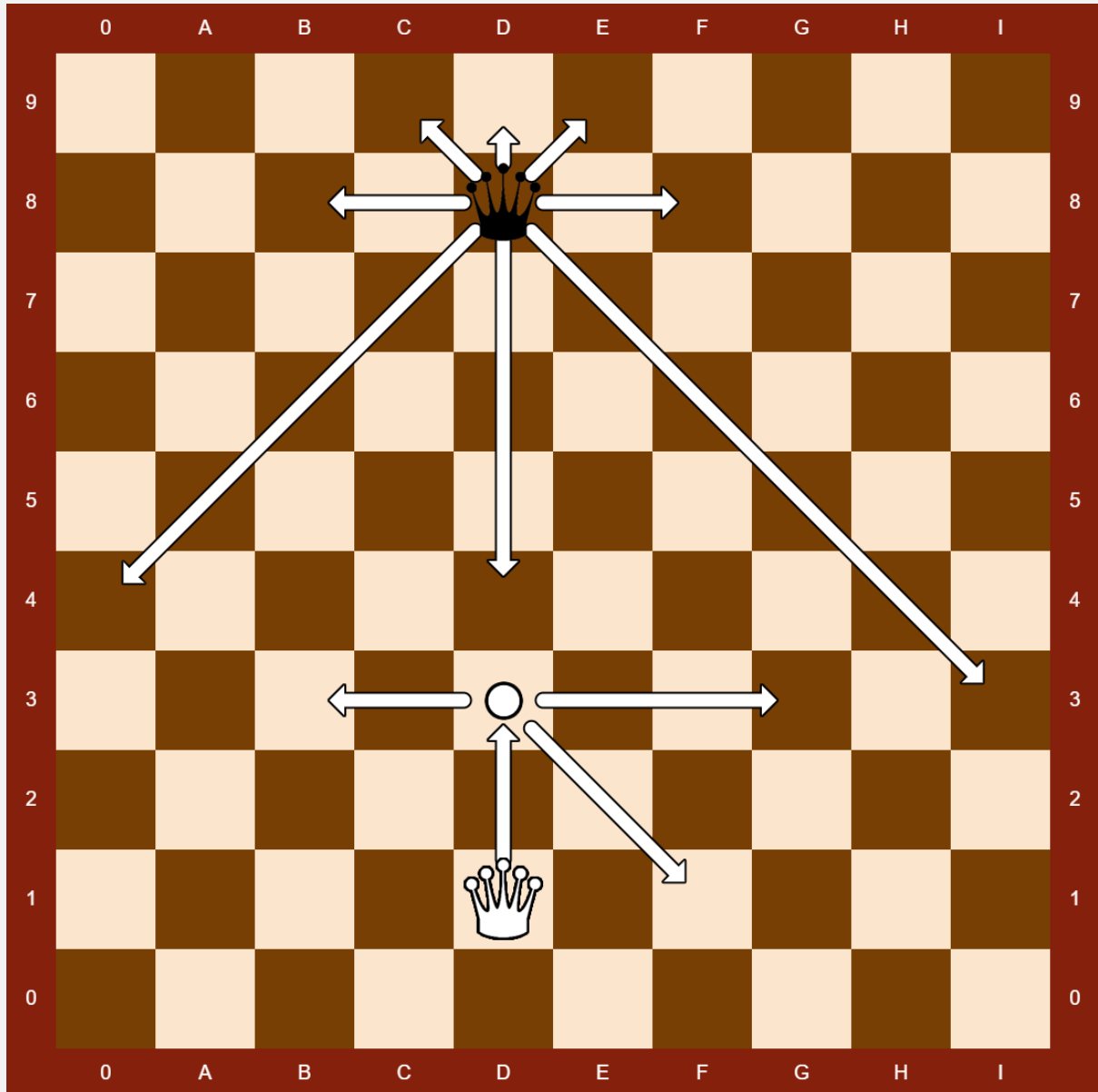
How does the Bishop move?



The Bishop moves in a diagonal direction but in any direction as long as they stay on the same colour square they started on. The path that they travel must be clear and they take at the end of the move.



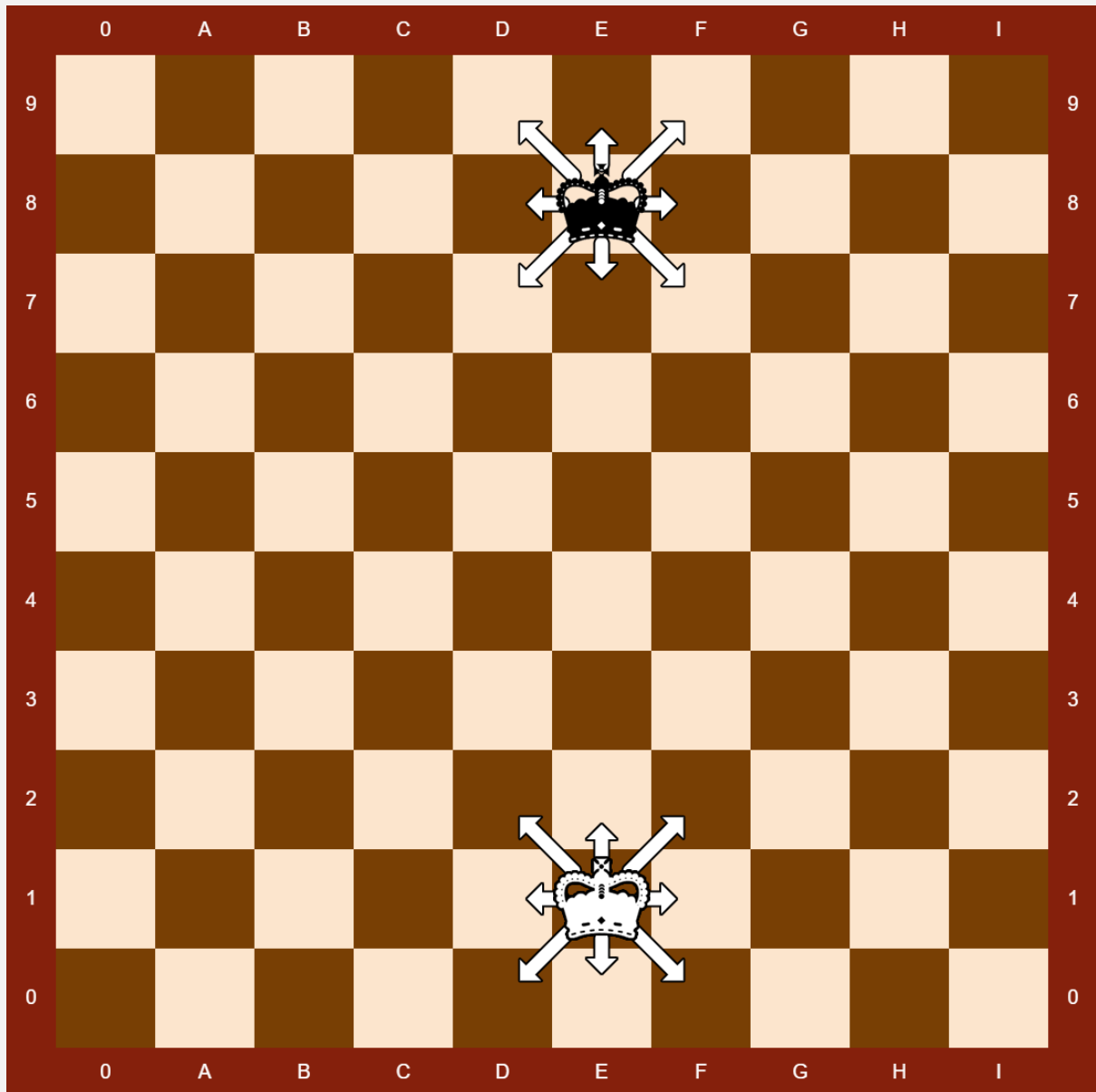
How does the Queen move?



The Queen moves in all directions but only one direction at a time. She moves diagonally any number of squares as long as the path is clear. This also applies if she moves straight up or down. She takes an opponent on the last move.



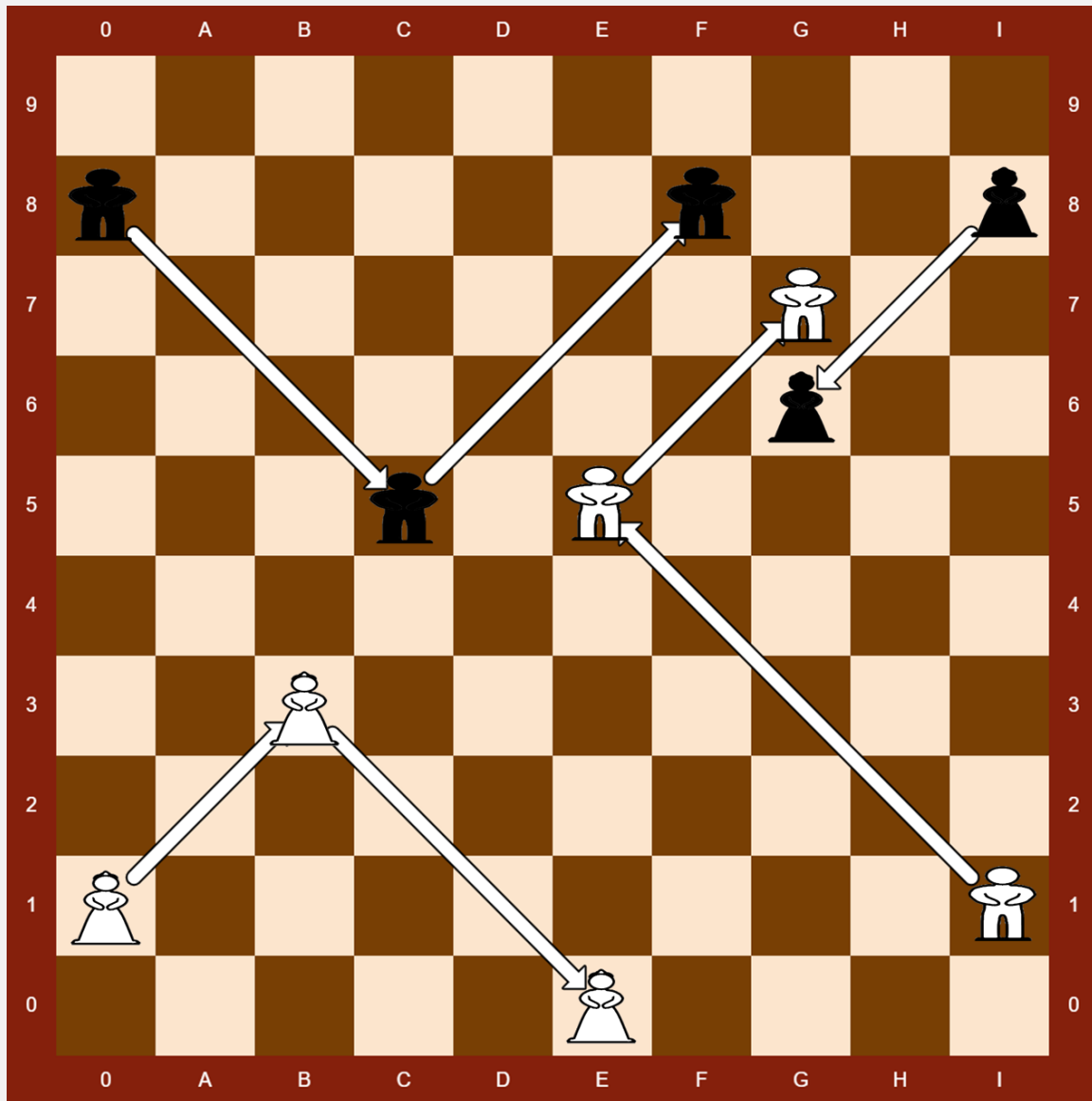
How does the King move?



The king is the key player and the one that needs protecting. The king is one of the weakest pieces and can only move one square. The square that it moves to must not put him in to check. If there is no square that he can move to with out being attacked by the opponent's piece then that is where the game is lost.



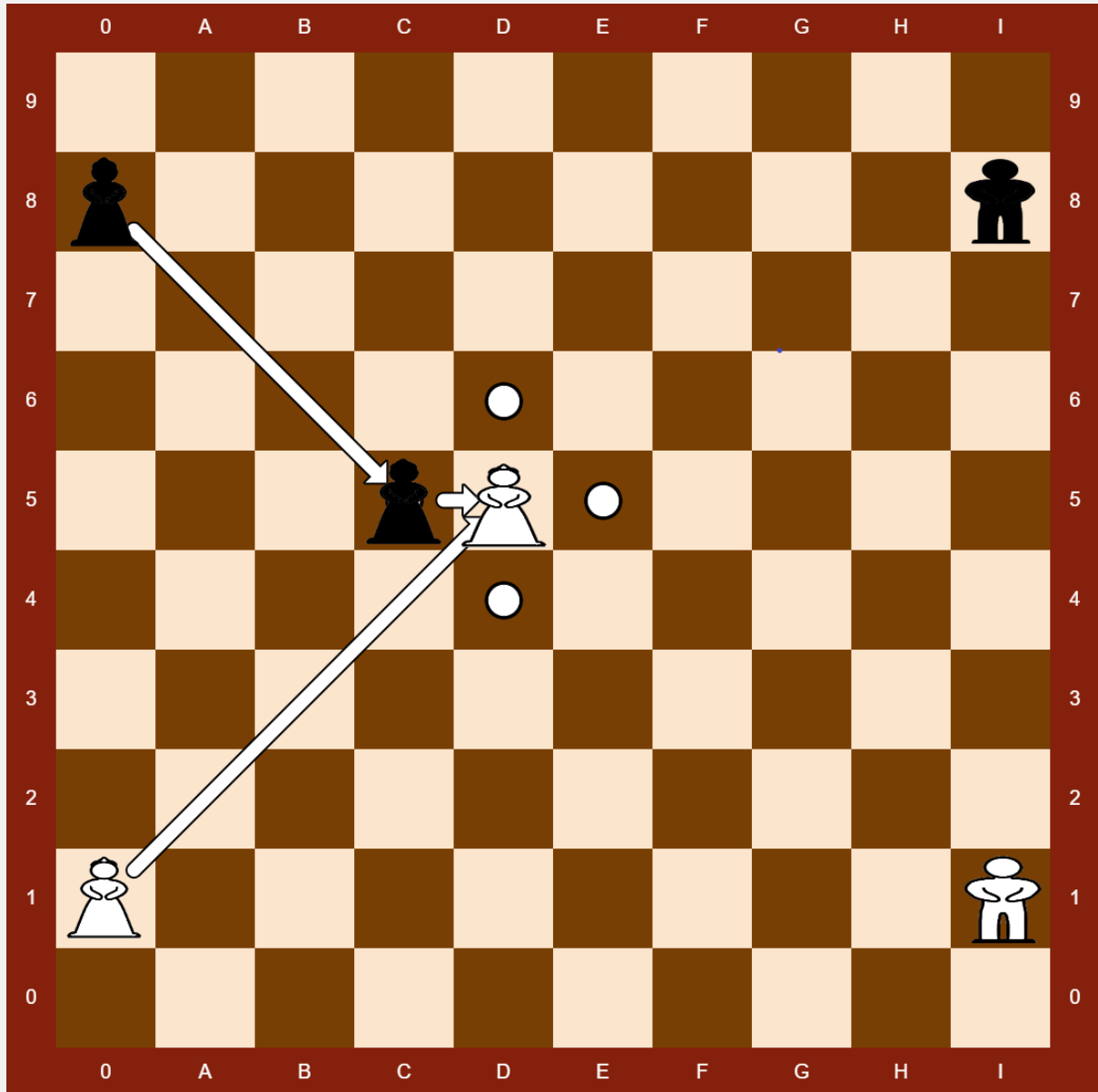
How does the Prince and Princess move?



The Prince and Princess mimics that of the Bishops. The moves are in a diagonal direction but in any direction as long as they stay on the same colour square they started on. The path that they travel must be clear and they take at the end of the move. However, there is a special move that can be used. If a Prince or Princess can move next to an opponent's Prince or Princess they may take it with in that move. This then puts that piece on the other coloured squared than what it started on.

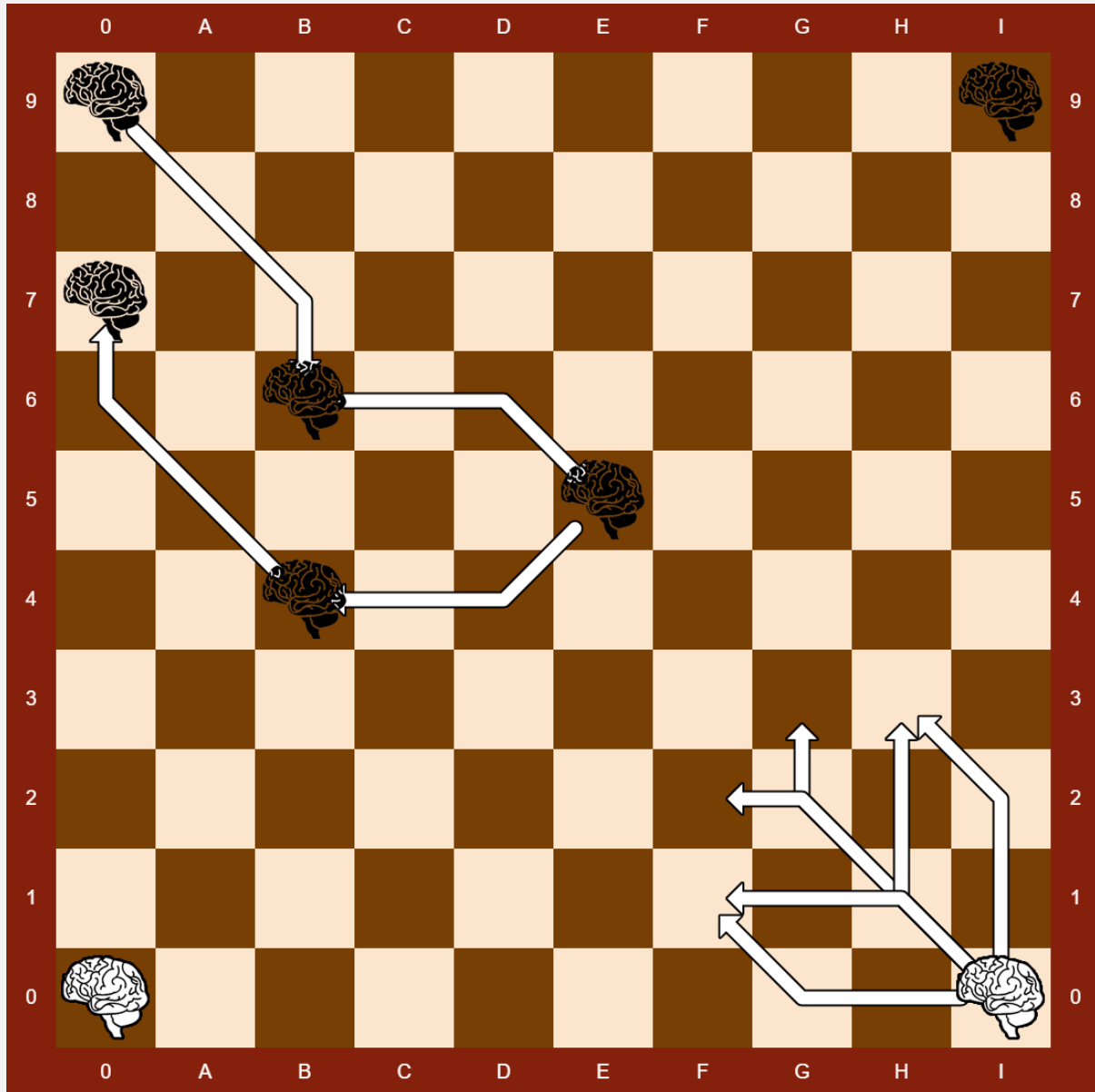


Prince or Princess special move





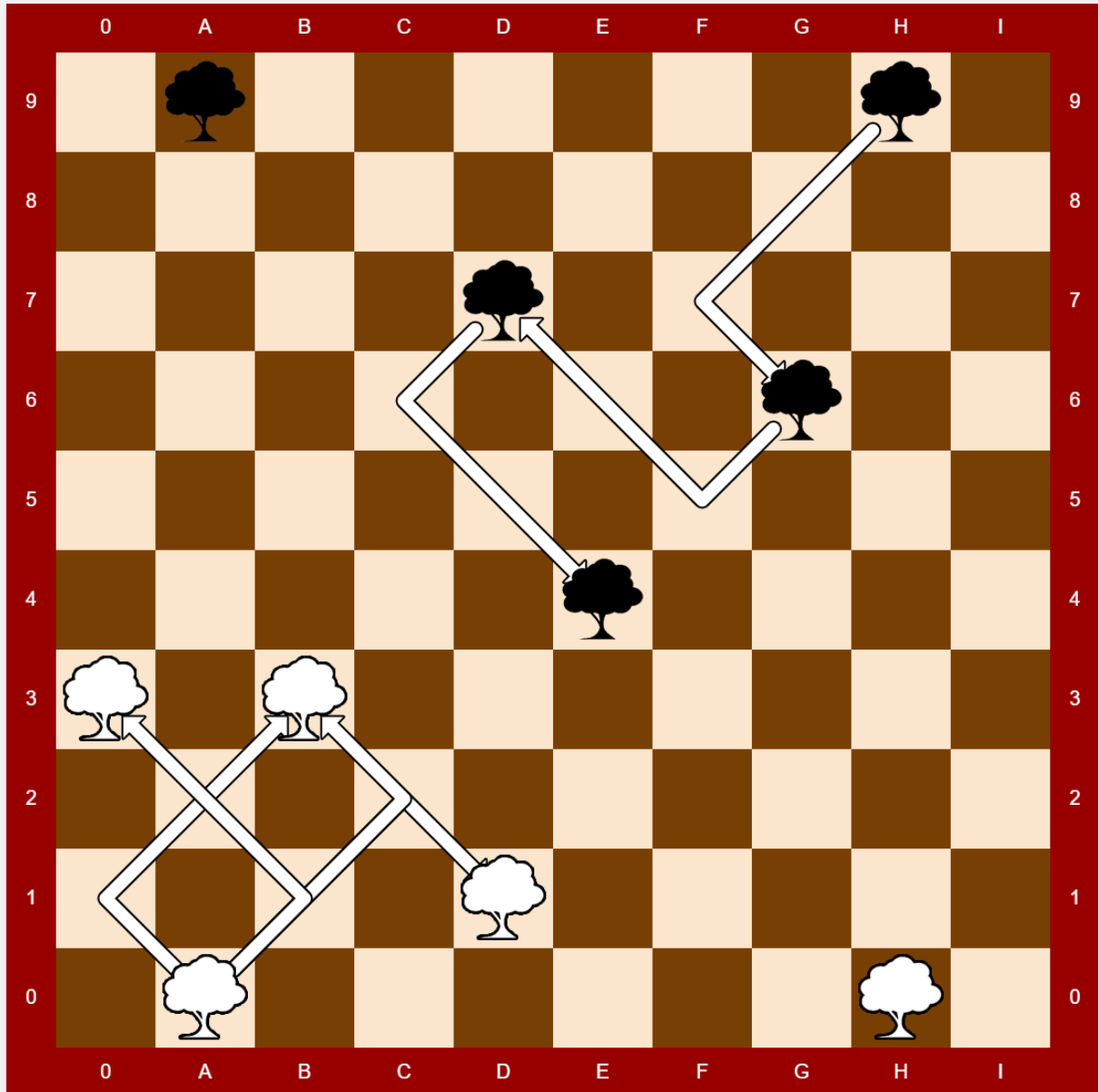
How does the Mind or philosophy move?



The Mind or philosophy moves both diagonally and straight during its move. It moves 3 squares with one change of direction from diagonal one or two squares to straight either up down or side to side at 45° one or two squares. The mind may jump on its first move but first move only.



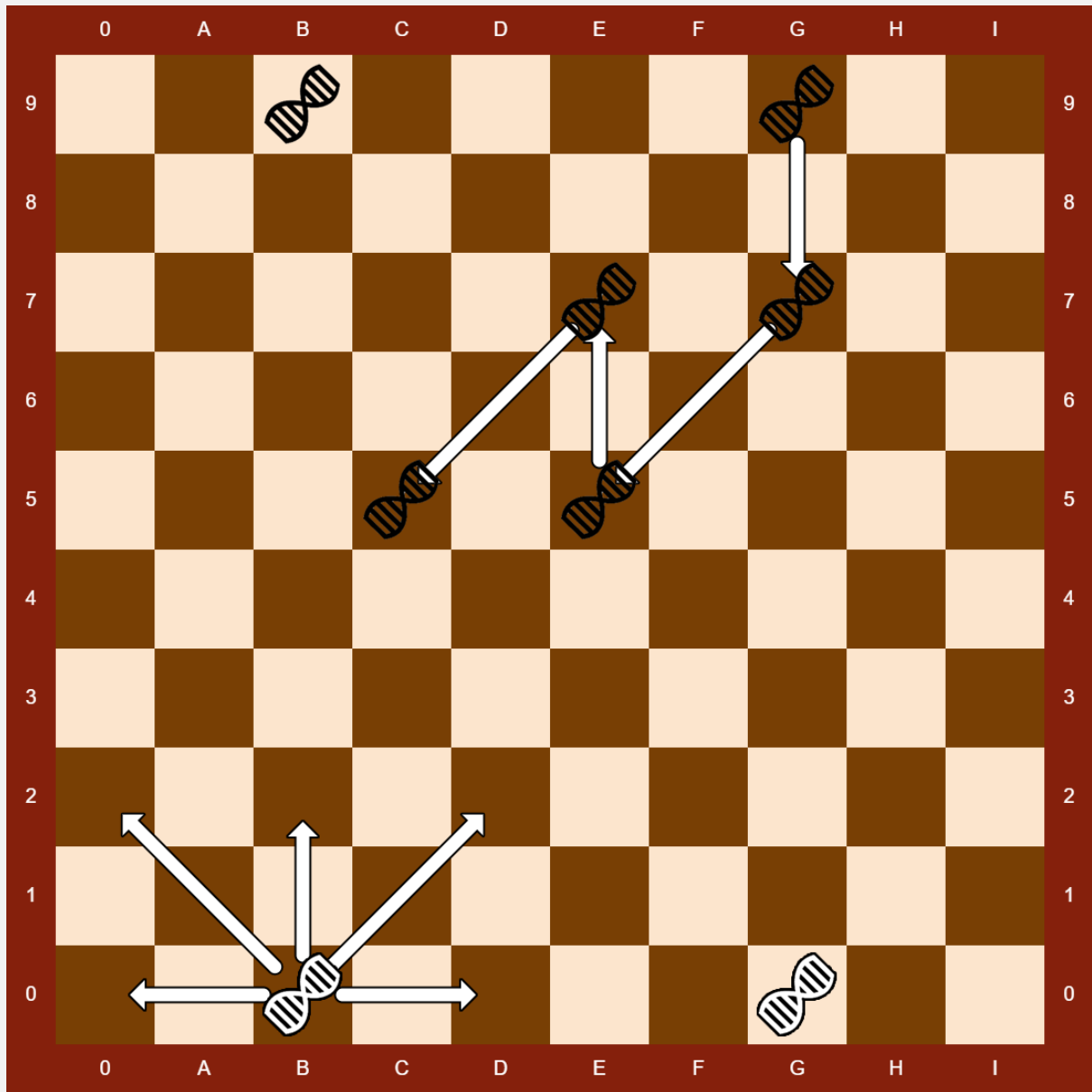
How does the Environment move?



The Environment move is in a diagonal fashion, 3 squares with one change of directions at 90°. The environment can't jump and it takes on the last move.



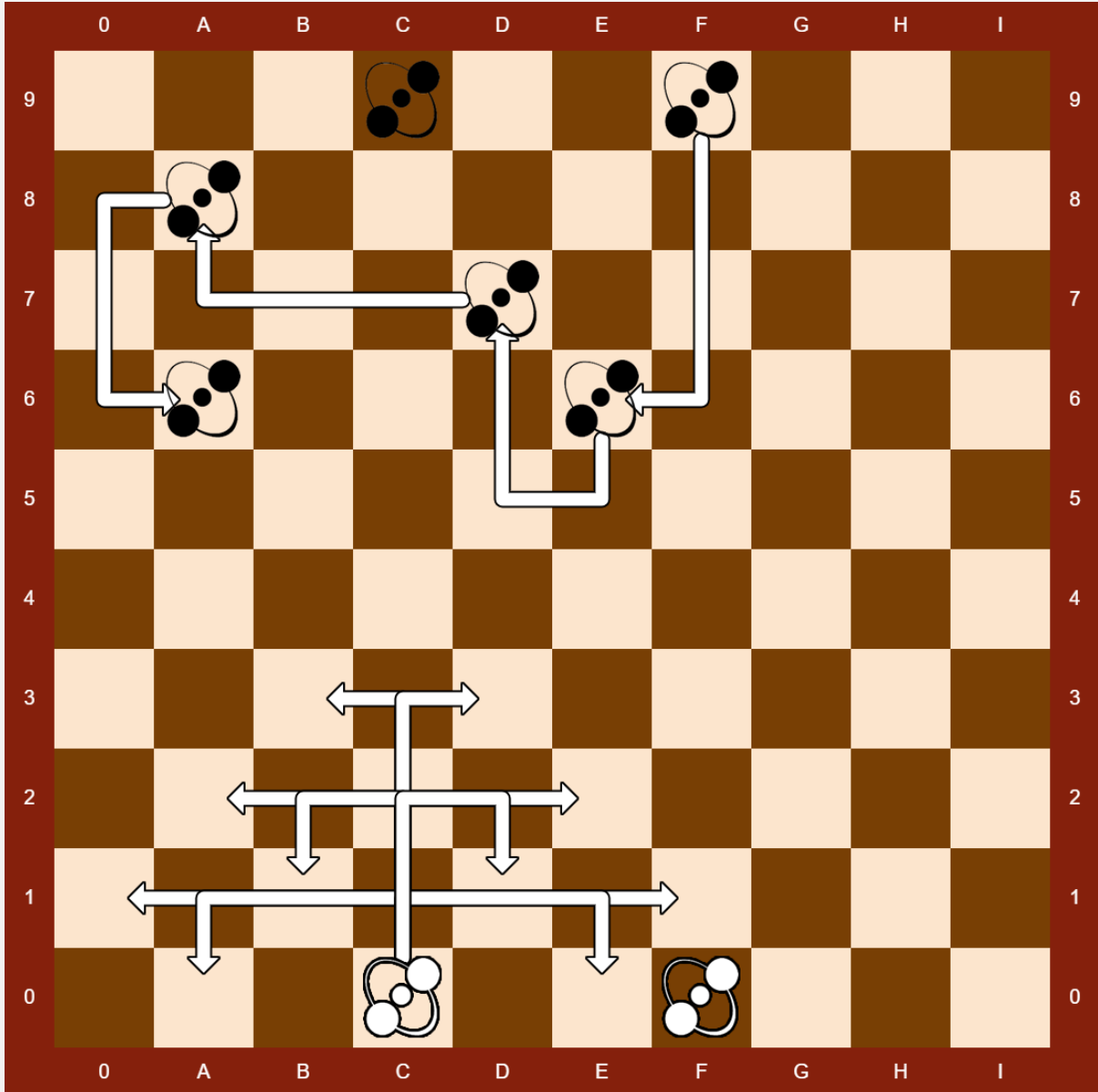
How does the DNA move?



The DNA move is 2 squares in either direction, up down sideways or diagonally. It can also Jump over its own piece or opponents' piece and take on its last move.



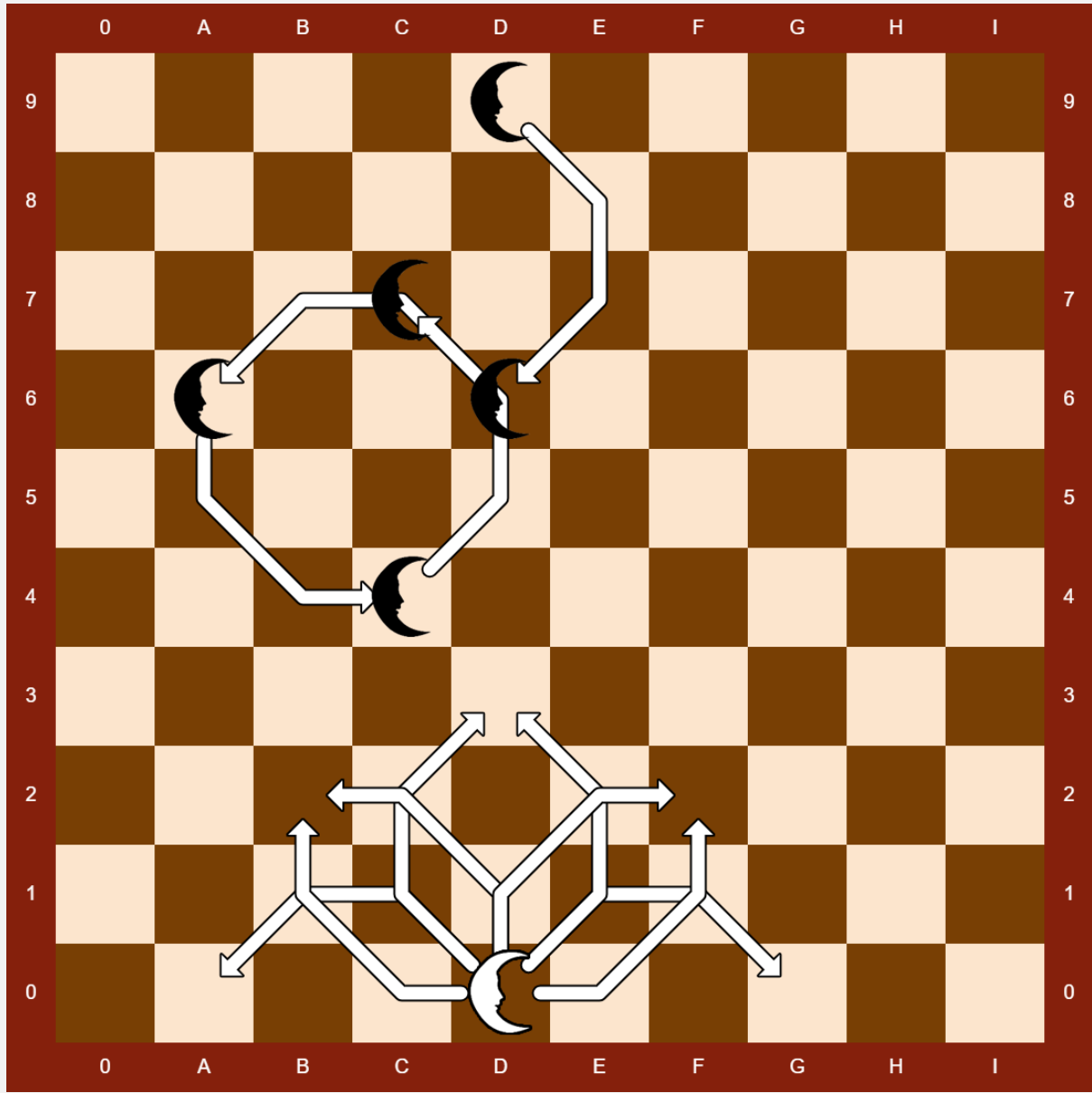
How do the Quarks move?



The Quark move is a little complicated at first but fun once you get the hang of it. It moves 4 squares with one or two changes of direction back towards itself. It does not move diagonally just up or down or side to side. It does not jump and takes on the last move.



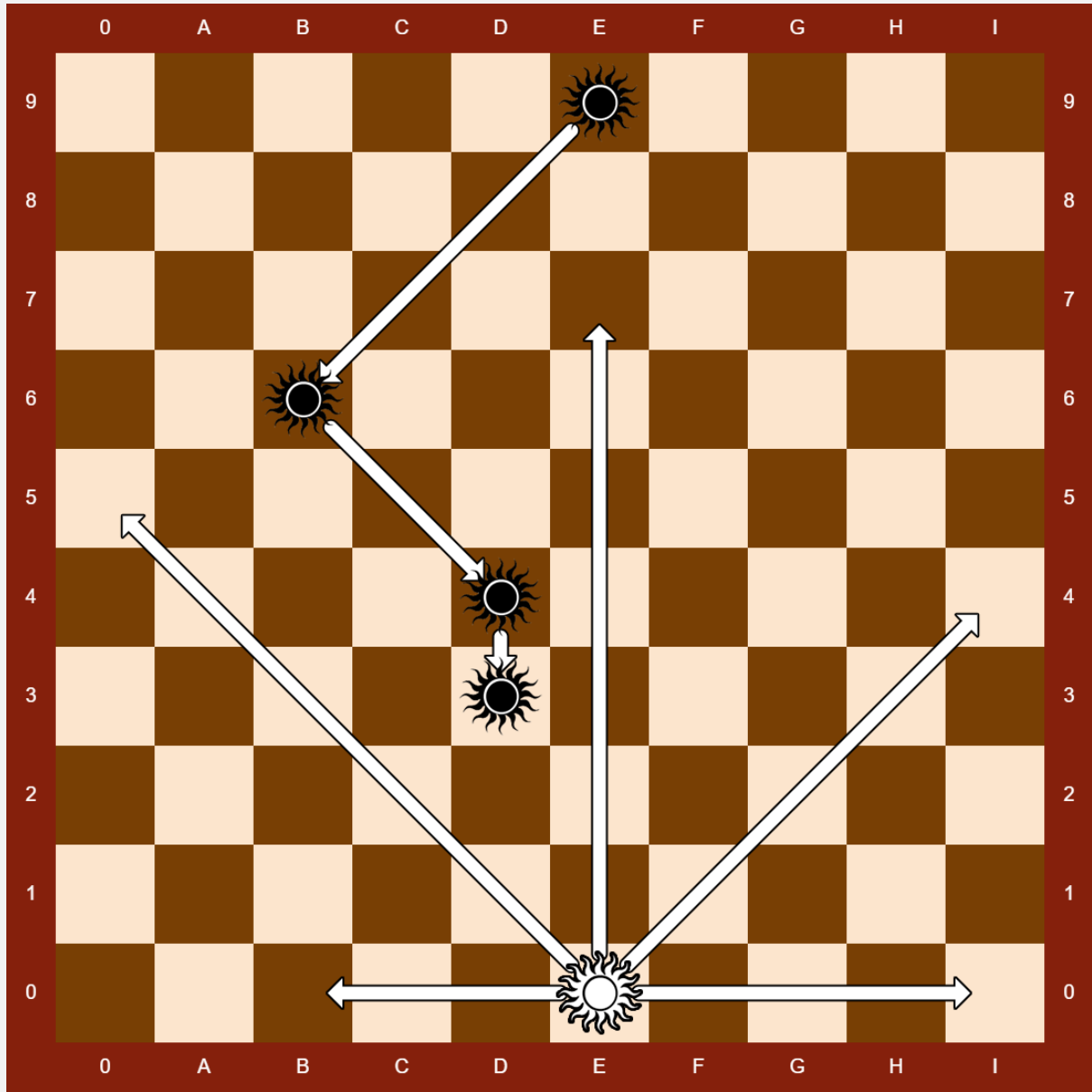
How does the Moon move?



The moves of the moon are again a little complicated. It moves 3 squares in a diagonal and straight fashion with two changes of direction each time. It follows an orbiting pattern. The path needs to be clear as it does not jump. It takes on the last move



How does the Sun move?



The Sun moves in the same way as the Queen in all directions but only one direction at a time. It moves diagonally, any number of squares as long as the path is clear. This also applies if it moves straight up or down. It takes an opponent on the last move.