

BAIT STATIONS

PRECAUTIONARY STATEMENTS HAZARDS TO HUMANS AND DOMESTIC ANIMALS CAUTION

Wash thoroughly with soap and water after handling bait stations.

DIRECTIONS FOR USE

It is a violation of Federal law to use this product in a manner inconsistent with its labeling. This product is specially designed for control of small cockroaches, such as German and Brown Banded roaches, in any area where they are a problem, such as residential, warehousing and commercial establishments, including food service, food manufacturing and food processing facilities, hospitals, schools, daycare centers, nursing homes, health care facilities, laboratories, computer and electronic equipment facilities, pet shops, zoos, basements, buses, boats, trains, and aircraft.

The transparent red top enables you to monitor bait consumption while providing roaches their preferred environment, darkness, because roaches do not see light in the red spectrum. This product is an odorless bait that roaches eat even in the presence of other foods and is packaged in a child-resistant bait station.

This product may also be used to kill exposed, adult stages of beetles: cadelle, cigarette beetle, confused flour beetle, dermesid, drugstore beetle, flat grain beetle, granary weevil, lesser grain borer, lesser mealworm, mealworm, merchant grain beetle, red flour beetle, rice weevil, rusty grain beetle, saw-toothed grain beetle, spider beetle, or warehouse beetle.

- Place bait stations in areas where cockroaches have been seen and where they hide. Cockroaches infest dark, warm, damp locations.
- The bait stations can be stuck to a vertical surface by peeling off the protective strip to expose adhesive.
- For effective roach control use 4 - 6 bait stations per 100 sq ft of horizontal surface area. Place adjacent to walls and flush in corners. Do not place more than 24 bait stations per residence. For outdoor use, place stations adjacent to structure.
- Do not spray the bait stations. Avoid placing the bait stations on freshly sprayed surfaces.
- Roaches will begin eating the bait immediately and you should expect to see fewer roaches within 3 days.
- Inspect all bait stations and replace as needed for continual control of roaches.

For Flea Pests:

- Remove and dispose of infested foodstuffs. Clean up spilled foodstuffs from cupboard or food storage area.
- This product will kill adult stages of beetles remaining in food storage areas. Once feeding on bait begins, most adult beetles will be killed within 7 days.
- Use 4 - 6 bait stations per 100 sq ft of horizontal surface area. Place adjacent to voids or cracks and crevice, behind and under cupboards, and near locations where infested foodstuffs were discovered.
- Bait stations can be stuck to a vertical surface by peeling off the protective strip to expose adhesive.
- Do not place more than 24 bait stations per residence.



Bayer (reg 0), the Bayer Cross (reg 0) and Maxforce® are registered trademarks of Bayer.

Bayer

Produced for:
Bayer Environmental Science
A Division of Bayer CropScience LP
2 T. W. Alexander Drive
Research Triangle Park, NC 27709
Product of China

STORAGE AND DISPOSAL:

Do not contaminate water, food or feed by storage or disposal.

PESTICIDE STORAGE: Store in a cool, dry area out of reach of children.

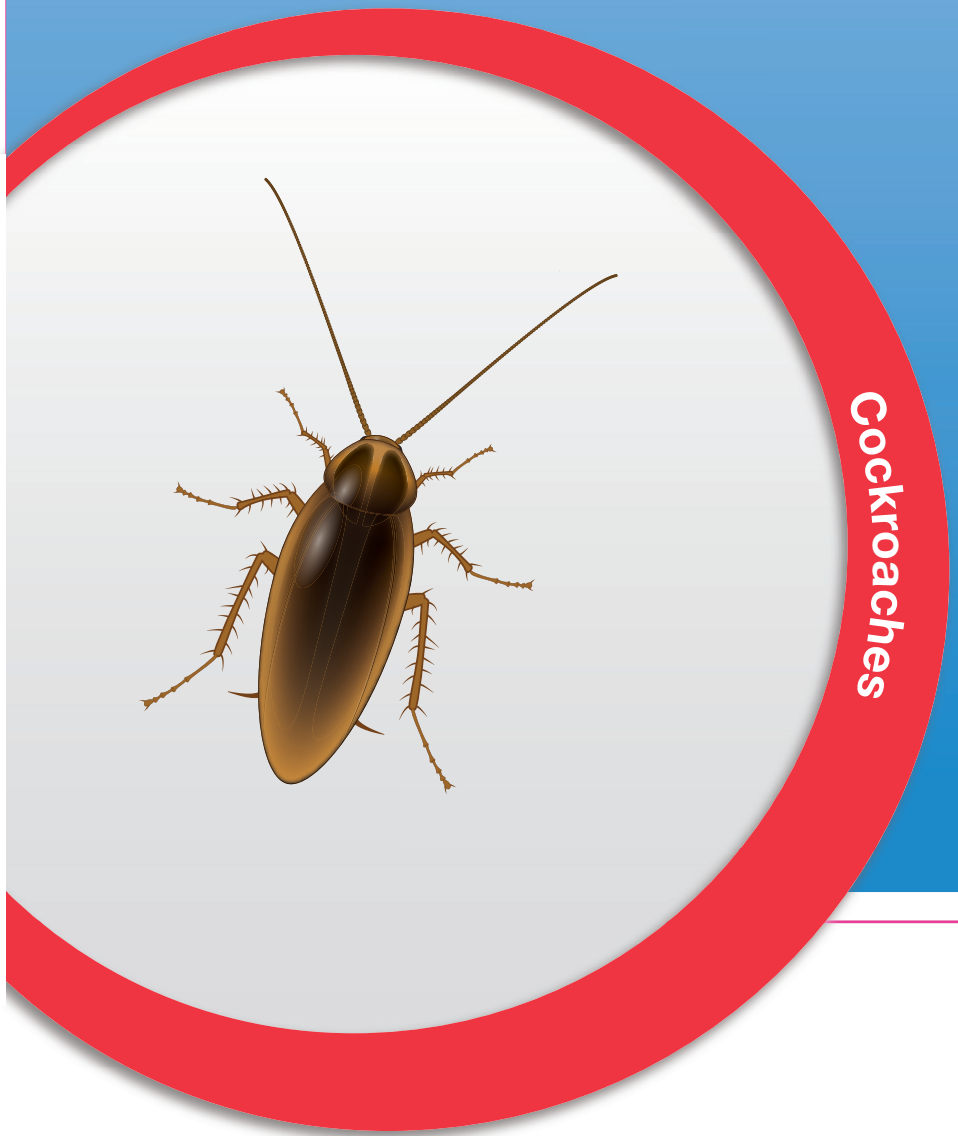
PESTICIDE DISPOSAL: Wrap bait stations in several layers of newspaper and discard in trash.

IMPORTANT: READ BEFORE USE

Read the entire Directions for Use, Conditions, Disclaimer of Warranties and Limitations of Liability before using this product. If terms are not acceptable, return the unopened product container at once. By using this product, user or buyer accepts the following Conditions, Disclaimer of Warranties and Limitations of Liability.

CONDITIONS: The directions for use of this product are believed to be adequate and must be followed carefully. However, it is impossible to eliminate all risks associated with the use of this product. Crop injury, ineffectiveness or other unintended consequences may result because of such factors as weather conditions, season or other materials, or the manner of use or application, all of which are beyond the control of Bayer CropScience LP. Bayer CropScience LP and its agents shall be liable for damage based on the use of this product only if such damage is caused by the use of the product in accordance with the directions on the label. **DISCLAIMER OF WARRANTIES:** TO THE EXTENT CONSISTENT WITH APPLICABLE LAW, BAYER CROP SCIENCE LP MAKES NO OTHER WARRANTIES, EXPRESS OR IMPLIED, OF MERCHANTABILITY OR OF FITNESS FOR A PARTICULAR PURPOSE OR OTHERWISE, THAT EXTEND BEYOND THE STATEMENTS MADE ON THIS LABEL. No agent of Bayer CropScience LP is authorized to make any warranties beyond those contained herein or to modify the warranties contained herein. TO THE EXTENT CONSISTENT WITH APPLICABLE LAW, BAYER CROPSCIENCE LP DISCLAIMS ANY LIABILITY WHATSOEVER FOR SPECIAL, INCIDENTAL OR CONSEQUENTIAL DAMAGES RESULTING FROM THE USE OR HANDLING OF THIS PRODUCT.

LIMITATIONS OF LIABILITY: TO THE EXTENT CONSISTENT WITH APPLICABLE LAW, THE EXCLUSIVE REMEDY OF THE USER OR BUYER FOR ANY AND ALL LOSSES, INJURIES OR DAMAGES RESULTING FROM THE USE OR HANDLING OF THIS PRODUCT, WHETHER IN CONTRACT, WARRANTY, TORT NEGLIGENCE, STRICT LIABILITY OR OTHERWISE, SHALL NOT EXCEED THE PURCHASE PRICE PAID, OR AT BAYER CROPSCIENCE LP'S ELECTION, THE REPLACEMENT OF PRODUCT.



Contents:
72 Child-Resistant Bait Stations
Net Weight:
0.05 Oz (1.5 g) per unit
Total Net Weight:
3.8 Oz (108.0g)
80221541 80213034B 140410AV1

Starts killing roaches in hours
Child resistant bait stations
Ideal for kitchen use
No vapor, no fumes, no mess
Kills roaches by contact or ingestion
Virtually eliminates roaches

FIRST AID	
If on skin or clothing:	• Take off contaminated clothing. • Rinse skin immediately with plenty of water for 15-20 minutes. • Call a poison control center or doctor for treatment advice.
HOT LINE NUMBER	
Have the product container or label with you when calling a poison control center or doctor or going for treatment. You may also contact 1-800-334-7577 for emergency medical treatment information.	

12.5" FRONT PANEL

BAIT STATIONS



Maxforce®
FC ROACH KILLER

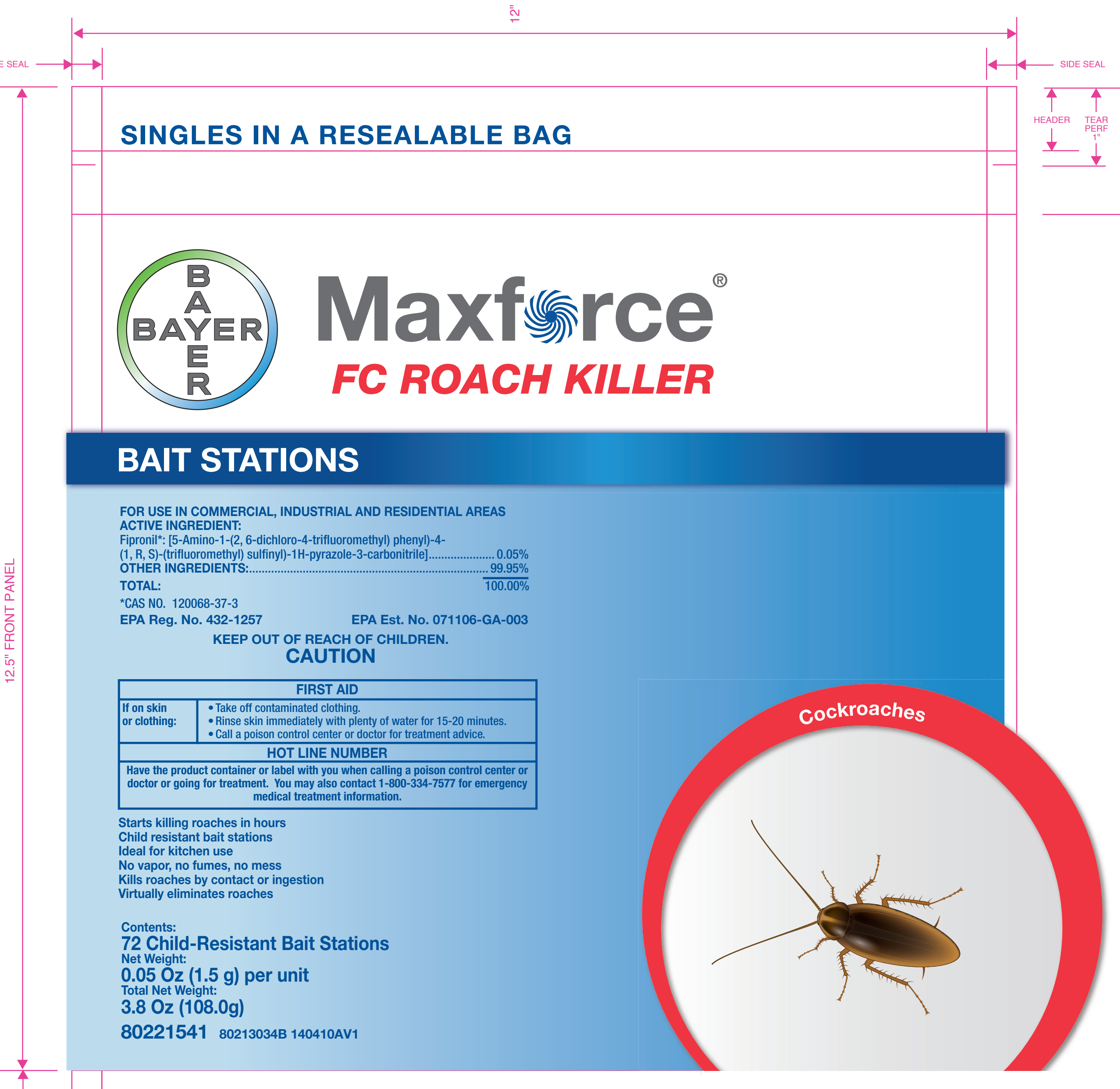
SINGLES IN A RESEALABLE BAG



SIDE SEAL

12"

SIDE SEAL



TEAR HERE TO OPEN



Maxforce[®]

FC ROACH KILLER

BAIT STATIONS

PRECAUTIONARY STATEMENTS

HAZARDS TO HUMANS AND DOMESTIC ANIMALS

CAUTION

Wash thoroughly with soap and water after handling bait stations.

DIRECTIONS FOR USE

It is a violation of Federal law to use this product in a manner inconsistent with its labeling.

This product is specially designed for control of small cockroaches, such as German and Brown Banded roaches, in any area where they are a problem, such as residential, warehousing and commercial establishments, including food service, food manufacturing and food processing facilities, hospitals, schools, daycare centers, nursing homes, health care facilities, laboratories, computer and electronic equipment facilities, pet shops, zoos, basements, buses, boats, trains, and aircraft.

The transparent red top enables you to monitor bait consumption while providing roaches their preferred environment, darkness, because roaches do not see light in the red spectrum. This product is an odorless bait that roaches eat even in the presence of other foods and is packaged in a child-resistant bait station.

This product may also be used to kill exposed, adult stages of beetles: cadelle, cigarette beetle, confused flour beetle, dermestid, drugstore beetle, flat grain beetle, granary weevil, lesser grain borer, lesser mealworm, mealworm, merchant grain beetle, red flour beetle, rice weevil, rusty grain beetle, saw-toothed grain beetle, spider beetle, or warehouse beetle.

1. Place bait stations in areas where cockroaches have been seen and where they hide. Cockroaches infest dark, warm, damp locations.
2. The bait stations can be stuck to a vertical surface by peeling off the protective strip to expose adhesive.
3. For effective roach control use 4 - 6 bait stations per 100 sq ft of horizontal surface area. Place adjacent to walls and flush in corners. Do not place more than 24 bait stations per residence. For outdoor use, place stations adjacent to structure.
4. Do not spray the bait stations. Avoid placing the bait stations on freshly sprayed surfaces.
5. Roaches will begin eating the bait immediately and you should expect to see fewer roaches within 3 days.
6. Inspect all bait stations and replace as needed for continual control of roaches.

For Pantry Pests:

1. Remove and dispose of infested foodstuffs. Clean up spilled foodstuffs from cupboard or food storage area.
2. This product will kill adult stages of beetles remaining in food storage areas. Once feeding on bait begins, most adult beetles will be killed within 7 days.
3. Use 4 - 6 bait stations per 100 sq ft of horizontal surface area. Place adjacent to voids or cracks and crevice, behind and under cupboards, and near locations where infested foodstuffs were discovered.
4. Bait stations can be stuck to a vertical surface by peeling off the protective strip to expose adhesive.
5. Do not place more than 24 bait stations per residence.

STORAGE AND DISPOSAL:

Do not contaminate water, food, or feed by storage or disposal.

PESTICIDE STORAGE: Store in a cool, dry area out of reach of children.

PESTICIDE DISPOSAL: Wrap bait stations in several layers of newspaper and discard in trash.

IMPORTANT: READ BEFORE USE

Read the entire Directions for Use, Conditions, Disclaimer of Warranties and Limitations of Liability before using this product. If terms are not acceptable, return the unopened product container at once. By using this product, user or buyer accepts the following Conditions, Disclaimer of Warranties and Limitations of Liability.

CONDITIONS: The directions for use of this product are believed to be adequate and must be followed carefully. However, it is impossible to eliminate all risks associated with the use of this product. Crop injury, ineffectiveness or other unintended consequences may result because of such factors as weather conditions, presence of other materials, or the manner of use or application, all of which are beyond the control of Bayer CropScience LP. All such risks shall be assumed by the user or buyer.

DISCLAIMER OF WARRANTIES: TO THE EXTENT CONSISTENT WITH APPLICABLE LAW, BAYER CROP-SCIENCE LP MAKES NO OTHER WARRANTIES, EXPRESS OR IMPLIED, OF MERCHANTABILITY OR OF FITNESS FOR A PARTICULAR PURPOSE OR OTHERWISE, THAT EXTEND BEYOND THE STATEMENTS MADE ON THIS LABEL. No agent of Bayer CropScience LP is authorized to make any warranties beyond those contained herein or to modify the warranties contained herein. TO THE EXTENT CONSISTENT WITH APPLICABLE LAW, BAYER CROPSOURCE LP DISCLAIMS ANY LIABILITY WHATSOEVER FOR SPECIAL, INCIDENTAL OR CONSEQUENTIAL DAMAGES RESULTING FROM THE USE OR HANDLING OF THIS PRODUCT.

LIMITATIONS OF LIABILITY: TO THE EXTENT CONSISTENT WITH APPLICABLE LAW, THE EXCLUSIVE REMEDY OF THE USER OR BUYER FOR ANY AND ALL LOSSES, INJURIES OR DAMAGES RESULTING FROM THE USE OR HANDLING OF THIS PRODUCT, WHETHER IN CONTRACT, WARRANTY, TORT, NEGLIGENCE, STRICT LIABILITY OR OTHERWISE, SHALL NOT EXCEED THE PURCHASE PRICE PAID, OR AT BAYER CROPSOURCE LP'S ELECTION, THE REPLACEMENT OF PRODUCT.

Bayer (reg'd), the Bayer Cross (reg'd) and Maxforce[®] are registered trademarks of Bayer.



(01)00785740197257

Bayer

Produced for:
Bayer Environmental Science
A Division of Bayer CropScience LP
2 T. W. Alexander Drive
Research Triangle Park, NC 27709
Product of China

12.5" FRONT PANEL

