

SCIENCE-BASED TARGETS REPORT 2025

**Fancy Fashions
G-27, Sector 6, Noida,
Uttar Pradesh**

CONTENTS

Introduction

GHG Emission Inventory

Science-based Targets Commitment

Emission Reduction Strategies

Conclusion

INTRODUCTION

This report presents the Science-Based Targets initiative (SBTi) alignment for Fancy Fashions, analyzing greenhouse gas (GHG) emissions for 2025. It includes short-term and long-term strategies to reduce Scope 1, 2, and 3 emissions, aiming for a low-carbon transition in line with the GHG Protocol and CDP reporting standards.

Alignment with the 1.5°C Pathway



The 1.5°C pathway refers to the global goal of limiting temperature rise to 1.5°C above pre-industrial levels, as outlined in the Paris Agreement.



The Science-Based Targets initiative (SBTi) encourages companies to set targets in line with this trajectory, ensuring that their emissions reductions contribute to global climate action.



The SBTi continues to play a pivotal role in guiding corporate climate action, providing a framework for companies to align their strategies with the goals of the Paris Agreement.

How Companies Align with the 1.5°C Pathway in SBTi Reporting

Setting Near-Term Science-Based Targets (SBTs)

Reduce absolute Scope 1 & 2 emissions by at least 42% by 2030.

Address Scope 3 emissions if they make up >40% of total emissions.

Setting Long-Term Net-Zero Targets

Choosing Approved Decarbonization Pathways

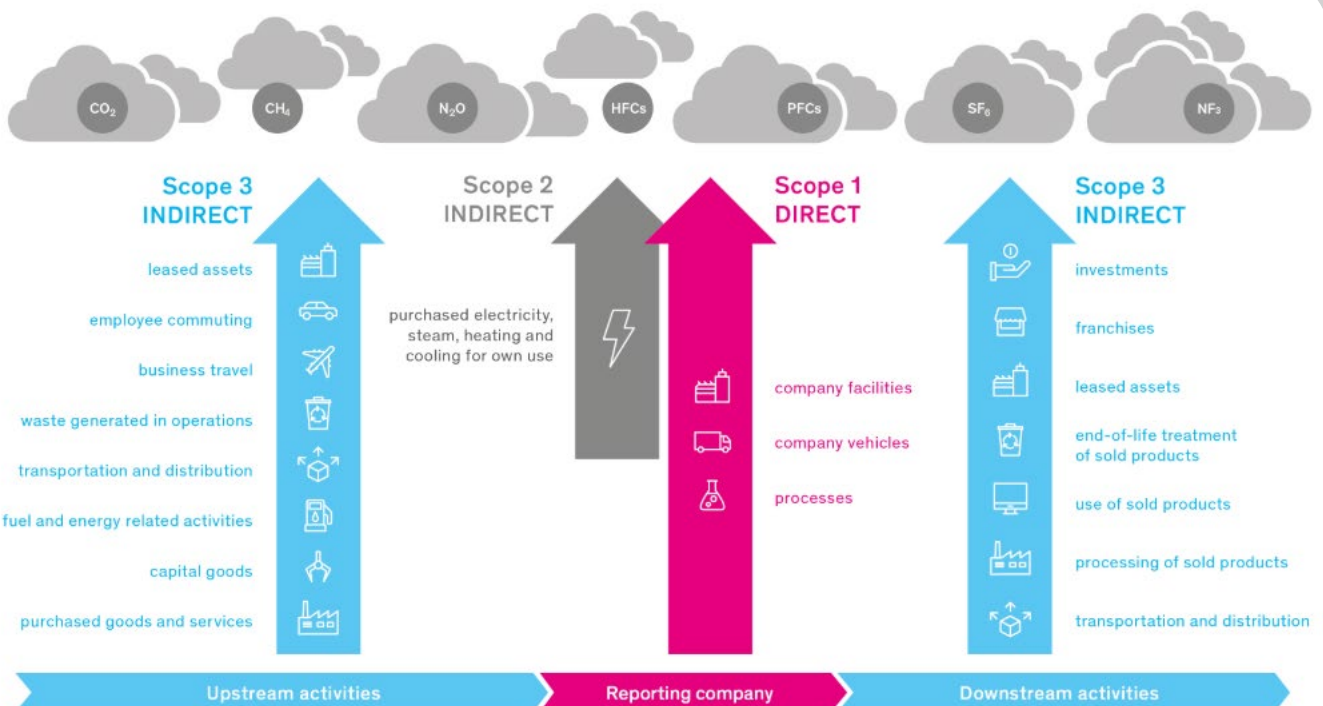
Transition to 100% Renewable Energy

Implement Carbon Reduction Strategies

Tracking & Reporting Progress

SBTi engagement triples since 2023—over 12,800 companies now committed to science-based climate action.

Companies adopting science-based targets have demonstrated substantial progress in reducing greenhouse gas emissions.





GHG EMISSION INVENTORY 2025

GHG EMISSION INVENTORY 2024 & 2025

Absolute	Scope 1 tCO2e	Scope 2 tCO2e	Scope 3 tCO2e	Total tCO2e
Year 2025	42.32	176.01	59.25	277.58

Normalised	Scope 1 tCO2e Per Pc	Scope 2 tCO2e Per Pc	Scope 3 tCO2e Per Pc	Total tCO2e Per Pc
Year 2025	0.00010	0.00041	0.00014	0.00065

*Data Verified by: Mr. Rajiv Chaturvedi
Reporting and Accounting: Green Compliance Services*



What are Science- based Target Commitments

Science-based targets (SBTs) are greenhouse gas (GHG) reduction goals set by companies in line with the latest climate science to limit global warming to well below 2°C, preferably 1.5°C, as per the Paris agreement. These targets must be validated by the science-based targets initiative (SBTi).



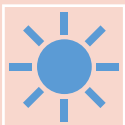
5 to 10-year emission reduction goals



Complete Scope coverage –
Scope 1, 2 and 3



Enhancement of energy efficiency



Adoption of renewable energy



Aim for at least 90-95% absolute emissions reduction by 2050

SHORT-TERM GOALS

2026
-
2029

Energy Efficiency & Electrification:

- Upgrade to high-efficiency machinery and predictive maintenance to reduce energy waste.
- Implement LED lighting and motion sensors.
- Replace diesel-powered equipment with electric alternatives.

Renewable Energy Integration:

- Procure renewable electricity via Power Purchase Agreements (PPAs).

LONG-TERM GOALS

2027
-
2040

100% Renewable Energy Transition:

- Phase out fossil fuel energy and fully transition to renewable electricity.
- Explore biomass or hydrogen energy sources.

Carbon Neutrality:

- Implement carbon offset programs.
- Invest in carbon capture technology.

Water Efficiency Measures:

- Install water recycling and rainwater harvesting systems.
- Reduce water usage per unit washed through process optimization.

Employee Commute Reduction:

- Implement carpooling programs and incentivize public transportation.

SUMMARY

- This report outlines the greenhouse gas (GHG) emissions profile of Fancy Fashions, assessing Scope 1, 2, and 3 emissions for 2025.
- It establishes short-term (2026-2029) and long-term (2027-2040) reduction strategies, aligning with the Science-Based Targets initiative (SBTi) and global decarbonization pathways.
- Key Findings:
 - Scope 2 dominates emissions, contributing 176.01 tCO₂e (63% of total), making electricity use the main reduction priority.
 - Operational emissions (Scope 1 & 2) account for 79% of total emissions, indicating the biggest impact will come from energy efficiency and renewable energy adoption.



Emission reduction strategies

Short-term goals (2026-2029)

Goals	KPI	2029 Target (from 2025 baseline)
Reduce Scope 2 emissions	Scope 2 tCO ₂ e (absolute)	Reduce 18% to ≤144.33 tCO ₂ e
Reduce Scope 2 emissions	Scope 2 tCO ₂ e (absolute)	Reduce 18% to ≤144.33 tCO ₂ e
Reduce Scope 2 emissions	Scope 2 tCO ₂ e (absolute)	Reduce 18% to ≤144.33 tCO ₂ e

LONG-term goals (2027 – 2040)

Goals	KPI	2040 Target (from 2025 baseline)
Deep decarbonize Scope 1 & 2	Scope 1+2 tCO ₂ e (absolute)	Reduce 90% to ≤21.03 tCO ₂ e
Deep decarbonize Scope 1 & 2	Scope 1+2 tCO ₂ e (absolute)	Reduce 90% to ≤21.03 tCO ₂ e
Deep decarbonize Scope 1 & 2	Scope 1+2 tCO ₂ e (absolute)	Reduce 90% to ≤21.03 tCO ₂ e

CONCLUSION

- By implementing these strategies, Fancy Fashions aims to significantly reduce its emissions and align with SBTi targets.
- Continuous monitoring and periodic reassessment will ensure progress toward a low-carbon future.
- By following these strategies, the company aims to align with SBTi's 1.5°C pathway, reducing its climate impact and ensuring sustainable business growth.

END OF REPORT
