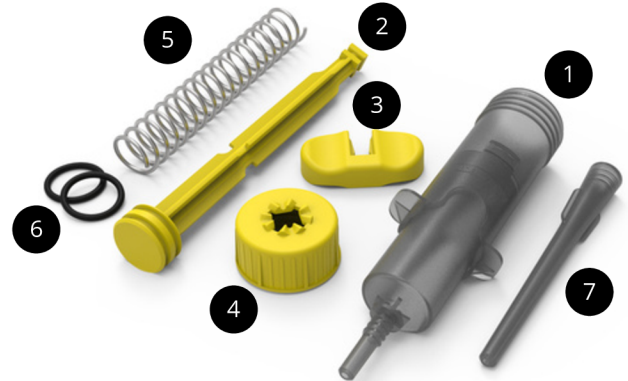


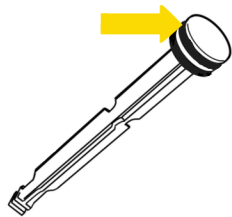
THE INJECTOR HAS THE FOLLOWING PARTS:

- | | |
|--------------|---------------------|
| 1. Barrel | 5. Spring |
| 2. Plunger | 6. O-Rings (3x20mm) |
| 3. Flange | 7. Extender tip |
| 4. Cap / Lid | |

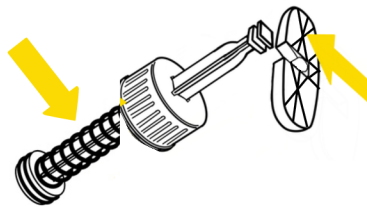


To buy spare parts visit: www.agroject.com/comprar

TO ASSEMBLE FOLLOW THE NEXT STEPS:



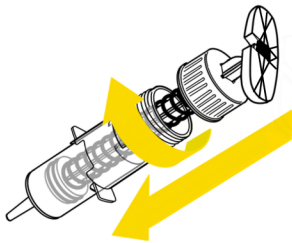
1. Insert the O-Rings into the grooves of the plunger.



2. Insert the spring into the plunger, place the cap and then the handle with the smooth side facing the plunger. Press until it clicks.



3. Directly apply a little amount of LUBRIJECT silicone spray on the O-Rings.



4. Insert the plunger into the body and screw it on the cap.

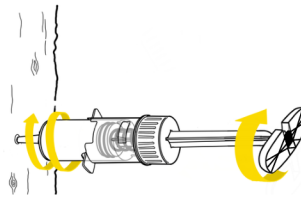
TO INJECT FOLLOW THESE STEPS: SOFT TREES AND THIN BARK:



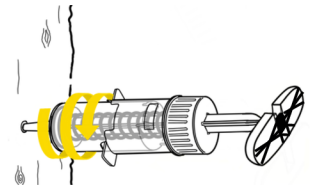
1. Place the tip of the injector into the product. Pull the plunger as far as you can and turn it 45° to lock.



2. With a 15/64" drill bit, drill a 2 inches deep hole (approximately) perpendicular to the trunk.

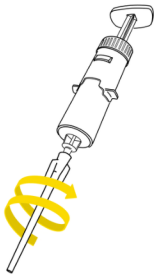


3. Screw the injector into the hole and unlock it by pulling the plunger and turning it 45°.

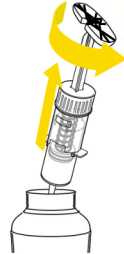


4. Once empty, unscrew the injector. Cover the hole (optional).

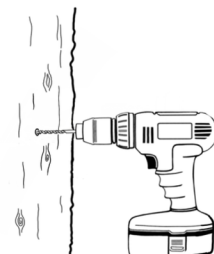
HARDWOOD / HARD BARK TREES:



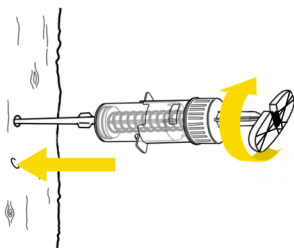
1. Screw the extender tip into the injector body.



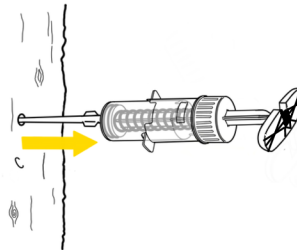
2. Place the tip of the injector into the product. Pull the plunger as far as you can and turn it 45° to lock.



3. With a 1/4" drill bit, drill a 3 inches deep hole (approximately).

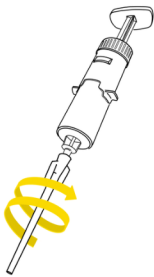


4. Screw the injector into the hole until it stops. Unlock by pulling the plunger and turning it 45°.

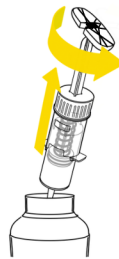


5. Once empty, unscrew the injector and cover the hole (optional).

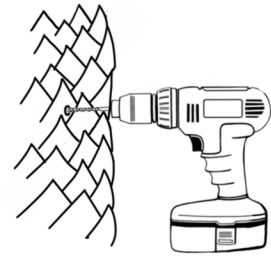
FOR PALMS:



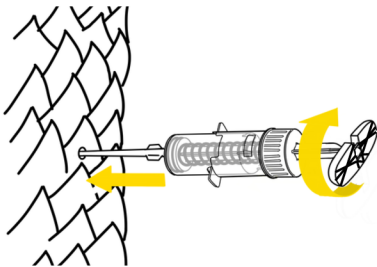
1. Screw the extender tip onto the body of the injector.



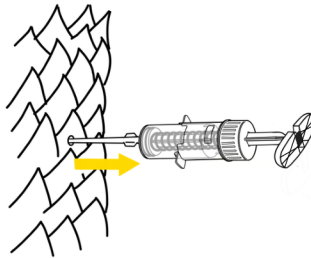
2. Place the tip of the injector into the product. Pull the plunger as far as you can and turn it 45° to lock.



3. Using a 1/4" drill bit and a 12" long shank, drill a hole as close to the center of the trunk as possible.



4. Insert the extender tip into the hole and unlock it by turning the plunger 45°.



5. Once empty, unscrew the injector and cover the hole.

EXTENDER TIP ASSEMBLY:

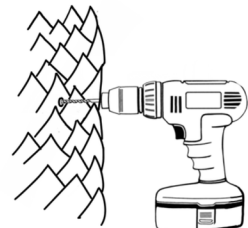


1. To install the extender tip, screw it onto the injector tip.

USES OF THE EXTENSION TIP:



2. Use it to load the solution into the injector from hard-to-reach containers.



3. Use it to inject palm trees and thick-barked trees.

***In case of leakage between the extension tip and the injector, teflon tape is recommended.**

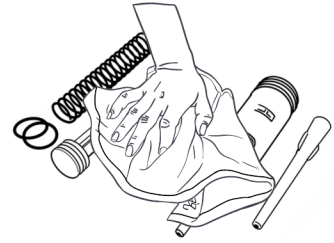
TO MAINTAIN THE INJECTOR, FOLLOW THESE STEPS:



1. Completely disassemble the injector.



2. Wash all parts with a fiber or brush, using soap and water. If using resin products, it is suggested to clean the injector with acetone.



3. Dry all parts thoroughly.



4. Directly apply a little amount of LUBRIJECT silicone spray on the O-Rings and assemble.

For more information go to: https://youtu.be/hp_5Y5AQrl

RECOMMENDATIONS:

- Maintain the injector after using them.
- With proper maintenance and use, you will be able to use the injectors as many times as needed.
- It is recommended to make a new hole for each injection when using it in trees.
- In palms, they can be injected as many times as required, as long as they are consecutive.
- If the tree does not absorb the product, it is recommended to make a new hole in protruding or free damage areas.
- It is recommended to use a solution with a maximum of 20% chlorine to sanitize the injectors.
- Inject on humid, sunny days in the morning.
- In tall trunk trees, inject below the pest or at your chest height.
- The extension tip can be trimmed to the length needed.
- The injection time depends on the environment and health of the tree.

For more information, treatments, sales and spare parts: www.agroject.com / info@agroject.com

Manufactured in Mexico by Agroject Technology.

Av. Hércules 500-27, Polígono Empresarial Santa Rosa, Qro. México. C.P. 76220

Telephone number: +52 442.585.1759