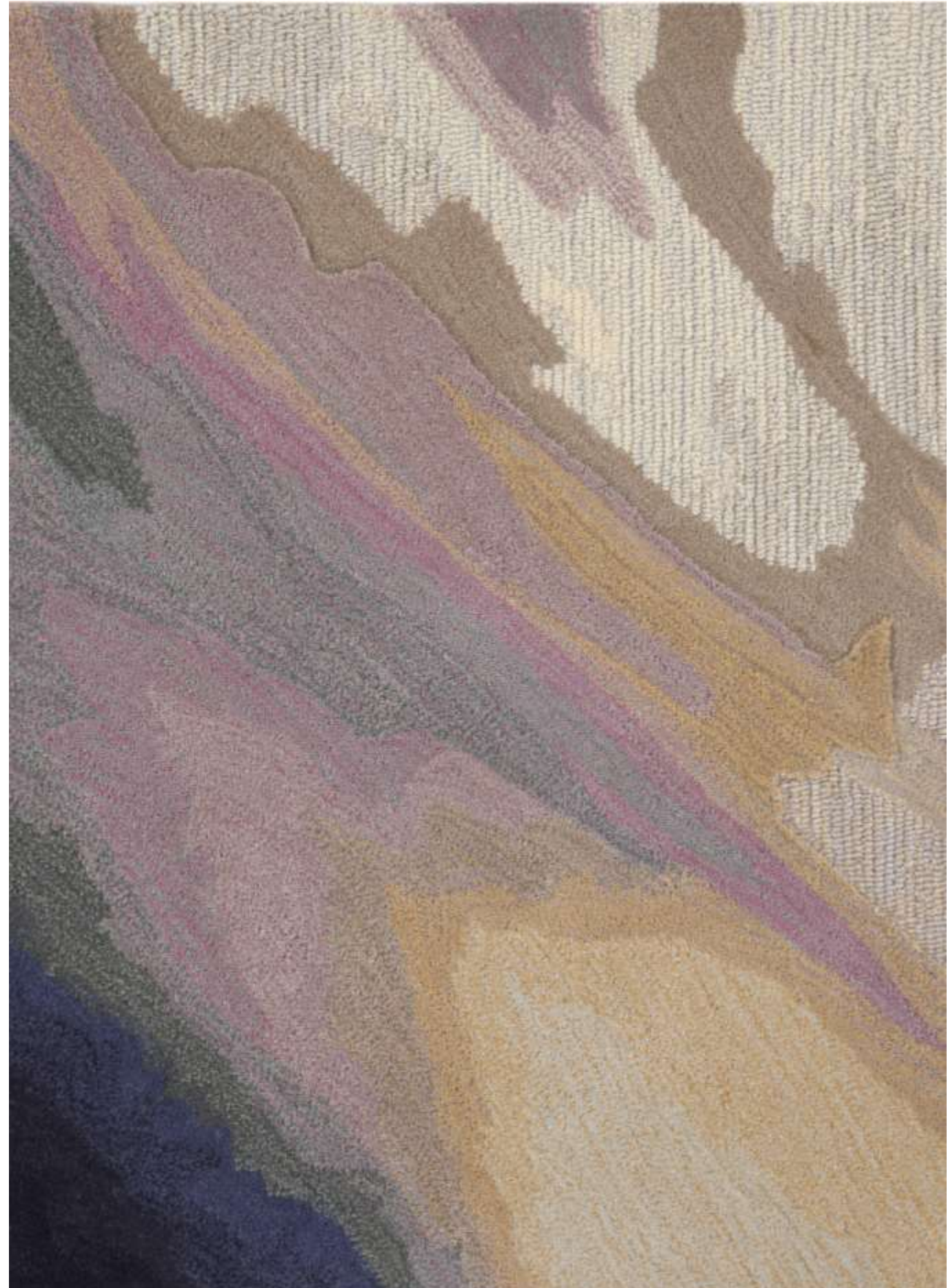


# HAND TUFTED RUGS

TEXTURES AND ACCENTS





## HAND TUFTED – HOW IS IT MADE?



Hand Tufted rugs are created without knots. Using a hand-operated tufting gun, loop yarns are pushed and pulled through a pre-woven, already imprinted canvas foundation that is stretched on to a frame.

Once removed from the frame a cotton scrim cloth is glued to the back of the canvas.

For a cut pile texture, the tops of loops on the front side are sheared to expose the thread ends creating a softer and plusher cut pile. Loops are left in place if a loop texture is desired.

# HAND TUFTED – SPECIFICATIONS



- ❖ 100% New Zealand Wool, Premium Wool or Wool Blends
- ❖ Cotton Backing (Non-Skid Backings available upon request)
- ❖ Tape Edge Binding or Serged Edges available
- ❖ 450 (72 oz/sy), 550 (88 oz/sy) and 650 (104 oz/sy)
- ❖ Custom sizes and shapes available
- ❖ Accent Fibers such as Luxcelle, Bamboo or Silk in subtle hints
- ❖ Hand Carving, Embossing, Sculpting, and Cut & Loop Techniques available
- ❖ Suitable for Guestrooms/Suites and Public Spaces
- ❖ Rug Pads are recommended for longevity and added comfort

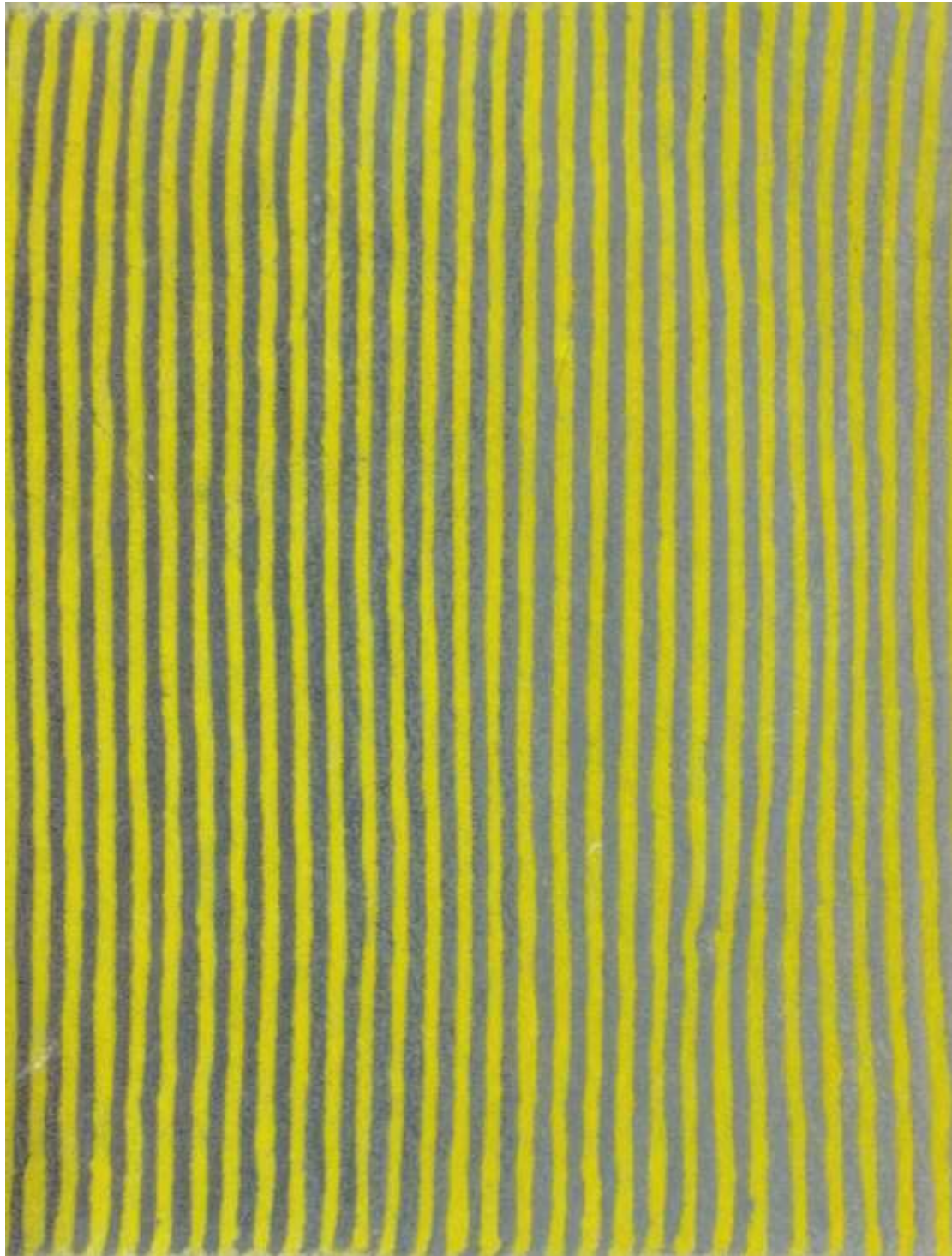


## HAND TUFTED – ALL CUT PILE WITHOUT CARVING





## HAND TUFTED – ALL CUT PILE with colors in a gradient



### APPEARANCE:

The greys run in a smooth gradient –  
dark to light  
left to right



## HAND TUFTED – COLOR GRADIENT





# HAND TUFTED – ALL CUT PILE WITH CARVING



CARVING



HAIR LINE CARVING



CARVING AND BEVELING



RECESSING



RECESSING AND BEVELING



EMBOSSING



EMBOSSING AND BEVELING



SCULPTING

## APPEARANCE:

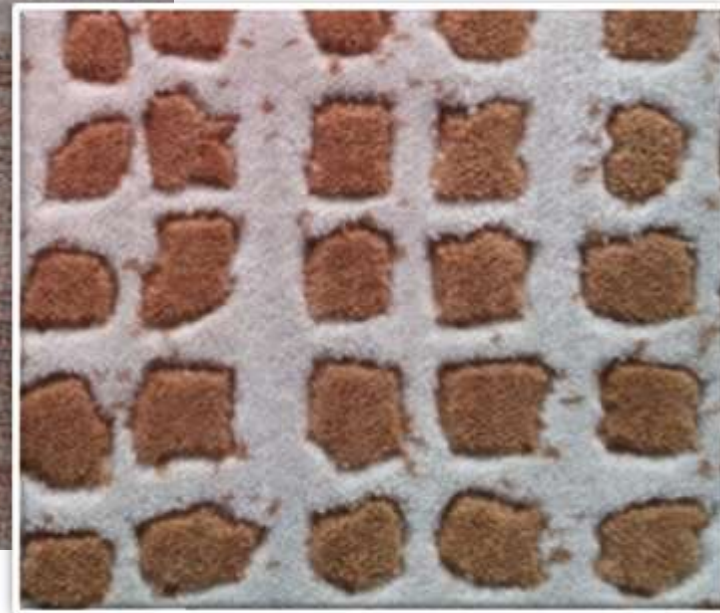
A cut pile texture with carving which enhances the outlines of patterns.

## HAND TUFTED – ALL CUT PILE WITH CARVING



### APPEARANCE:

A cut pile texture with carving which enhances the outlines of patterns.





# HAND TUFTED – ALL CUT PILE WITH CARVING



## APPEARANCE:

A cut pile texture with beveled carving.

Also, the edge of the rug can be any shape. This is a wavy edge.





## HAND TUFTED – SCULPTING



### APPEARANCE:

A mixture of high-low cut pile where the high cut pile can be sculpted in different shapes using different bevels.





## HAND TUFTED – EMBOSSING



### APPEARANCE:

A mixture of high-low cut pile with a concentration of higher-level cut pile so that the lower-level cut pile looks like an imprint of a pattern.



## HAND TUFTED – HIGH-LOW CUT PILE



### APPEARANCE:

A varying amount of high-low cut pile depending on the pattern.





## HAND TUFTED – HIGH-LOW CUT & LOOP PILE



### APPEARANCE:

A high-low cut & loop pile. Can be with or without carving. Both examples shown are with carving.





# HAND TUFTED – HIGH CUT & LOW LOOP PILE WITH CARVING



## APPEARANCE:

A cut & loop pile texture with carving in the cut pile only where required.



The loop pile can be requested to be in a linear effect or in a random effect. Loop pile is lower than the cut pile.



# HAND TUFTED – HIGH CUT & LOW LOOP PILE WITHOUT CARVING



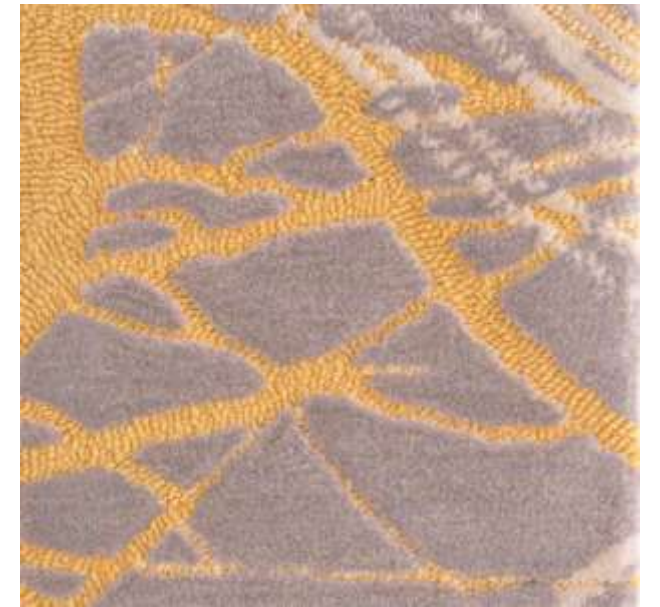
## APPEARANCE:

A cut & loop pile texture without carving in the cut pile.

The loop pile can be requested to be in a linear effect or in a random effect. Loop pile is lower than the cut pile.



## HAND TUFTED – LEVEL CUT & LOOP PILE



### APPEARANCE:

A cut & loop pile texture with or without carving in the cut pile.

The loop pile can be requested to be in a linear effect or in a random effect. Loop pile is the same level as the cut pile.





## HAND TUFTED – ALL LOOP PILE



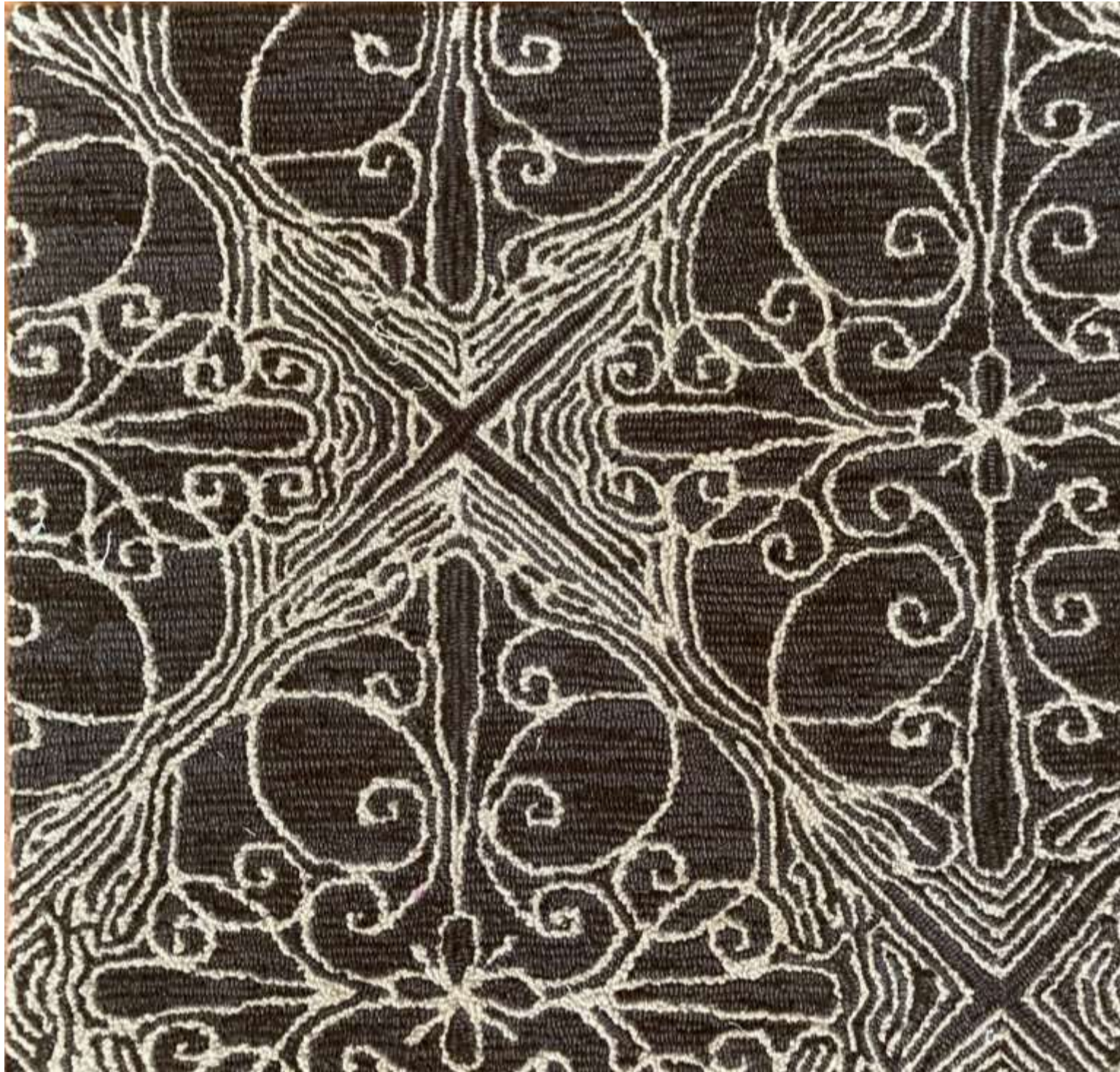
Same Level



High & Low Level



## HAND TUFTED – ALL LOOP PILE



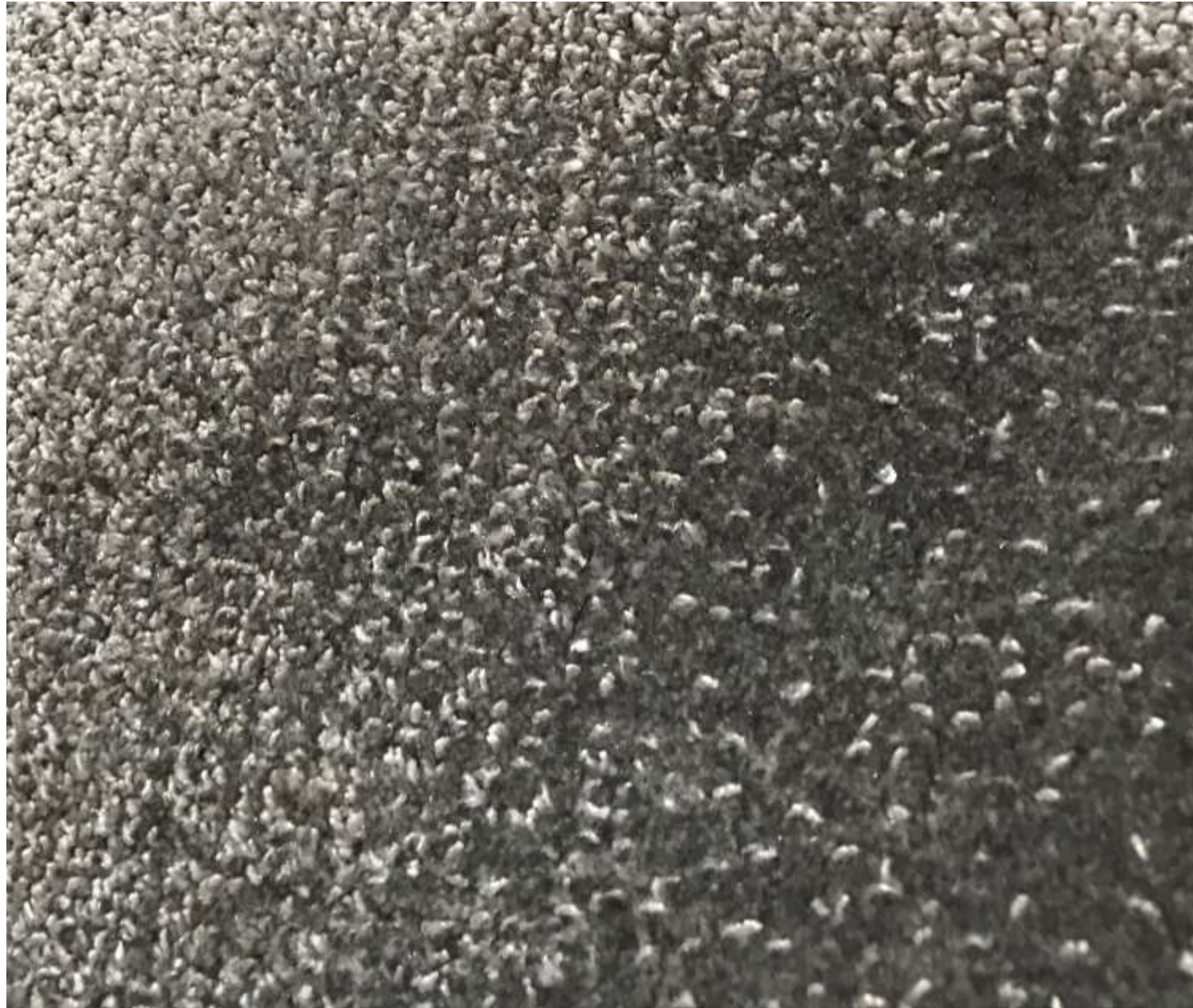
All Loop Pile – directional



Same Level loop pile but in a pattern



# HAND TUFTED – LOOP PILE with TIP SHEARING



**Same Level cut and loop**  
**Shows a gradient of tip shearing**  
**Right hand side is nearly 90% tip sheared from zero on the left**

## APPEARANCE:

Different percentages of Tip Shearing can be requested.  
e.g. 70% Tip Shear will mean you get 70% cut pile and 30% loop pile showing in that area.

Image on the left shows a gradient of Tip Shearing



## HAND TUFTED – ALL CHUNKY LOOP PILE





## HAND TUFTED – ALL CHUNKY LOOP PILE – Colorado collection



HT350



HT550



## HAND TUFTED – COLOR BLENDING/SHADING





## HAND TUFTED – ONE STOP SHOP SAMPLE





## HAND TUFTED – EDGE TAPE BINDING



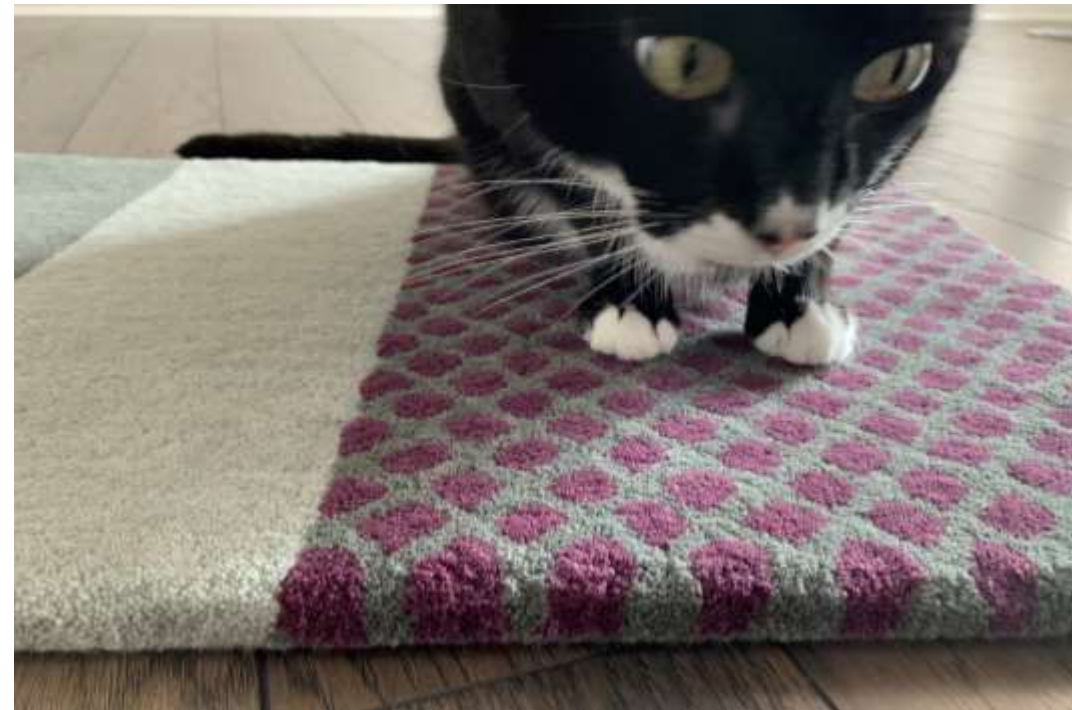
### APPEARANCE:

A fabric tape close in color designed to blend with the rug edge in a subtle way.

Most economical of rug bindings.



## HAND TUFTED – SERGED EDGE with RUG BINDING



### APPEARANCE:

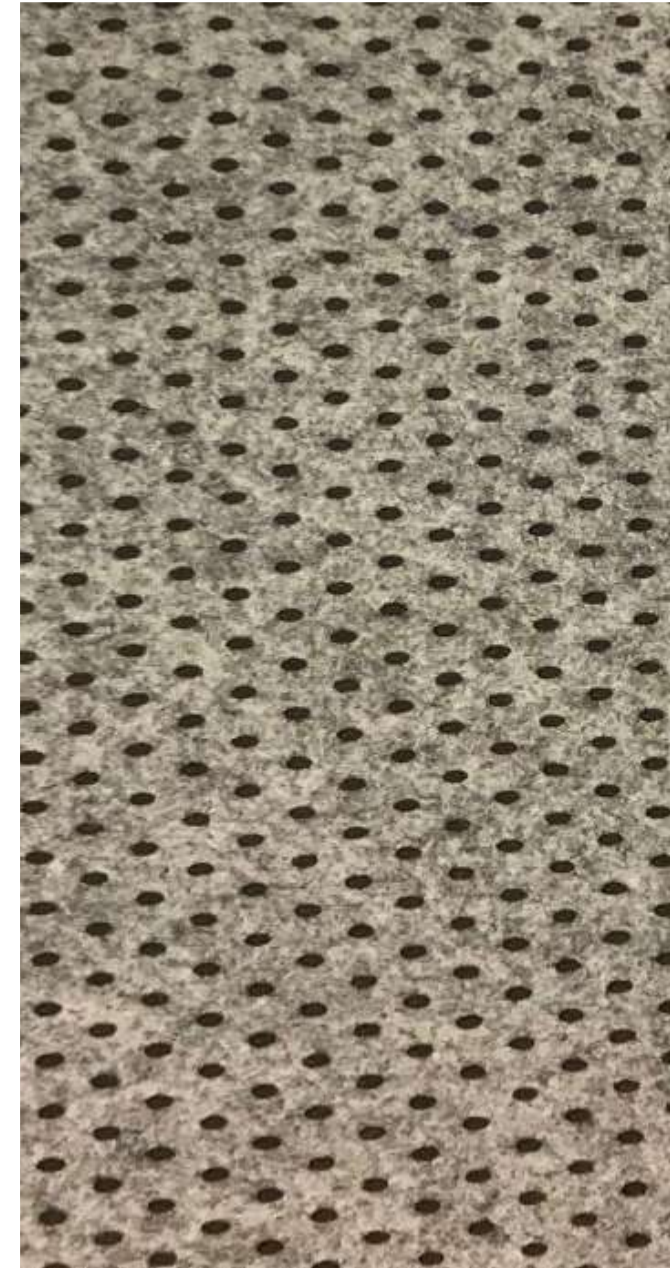
Serging yarn is hand sewn, using the same yarns present in rug. Sits below the rug edge, almost hidden. Most labor intensive but a quality finish.



## HAND TUFTED – COTTON BACKING



**Cotton backing with Rug Tape finish**



**Non-skid  
integrated PAD**



# HAND TUFTED – BENEFITS OF WOOL



## NOTE THE AMAZING PROPERTIES OF WOOL AND WOOL BLENDS:

- ❖ Wool is a natural, renewable resource, that is biodegradable and easy to manufacture with a low-carbon footprint
- ❖ Wool is a non-allergenic fiber that improves indoor air quality
- ❖ Wool has superior long term appearance retention due to the fiber's natural resilience
- ❖ Wool is naturally flame resistant
- ❖ Excellent dye retention for optimal color
- ❖ Wool has innate stain and soil resistance



# HAND TUFTED – ENGINEERING A PROJECT

## Key questions to ask the client:

- ❖ **Which area is this for?** This is important to understand which quality to use, the higher the traffic, the denser or heavier the ounce weight
- ❖ **What size and shape?** The client is responsible for providing this info
- ❖ **Loose Lay or Inset?**
  - If Loose Lay, is a non-skid backing needed?
    - For smaller rugs, we recommend a non-skid backing or a separate rug grabber to hold the rugs in place
    - For larger rugs, we recommend a rug pad for longevity and added comfort under foot
  - If Inset, add 3” on all sides to allow for any inset size variances
- ❖ **Budget?** This is important to understand what textures and accents can be added.
- ❖ **No limitations – its like an artwork**
- ❖ **Pricing out free form rugs – use the widest and longest points to determine the width and length = SF**



# **G.F.S. vol 1 – AREA RUGS**





# GFS vol 1 Area Rugs - Hand Loomed and Woven

## GUESTROOM FLOORING SOLUTIONS | HANDLOOMED | 90% NZ WOOL-10% LUXCELLE

|                     |                          |
|---------------------|--------------------------|
| CONSTRUCTION:       | Hand Loomed              |
| APPEARANCE:         | Cut Pile                 |
| YARN/FIBER CONTENT: | 90% NZ Wool-10% Luxcelle |
| DYE METHOD:         | Skein Dyed               |
| PILE WEIGHT:        | 72.26 oz/sy              |
| TOTAL WEIGHT:       | 117.97 oz/sy             |
| PILE HEIGHT:        | 0.43" (11 mm)            |
| BACKING:            | Latex-Cotton             |
| EDGES:              | Hand Serged              |
| ADA COMPLIANT:      | No                       |
| COUNTRY OF ORIGIN:  | India                    |

### PERFORMANCE

FLAMMABILITY: PILL TEST CPSC FF-1-70, 16CFR-1630.4, ASTM D2859-96

**NOTES:** Hand-Loomed Pile is complimented by tonal wool and luxcelle™ yarns in varying forms for a soft touch and a timeless palette.

**COLORS:** 2 Patterns: BLC01 and BLC02

BLC01 - 2 Colors



BLC01 Quarry

BLC02 - 3 Colors



BLC02 Zinc



BLC02 Ore



BLC02 Graph

### BLANCA



BLC01 Sand

## GUESTROOM FLOORING SOLUTIONS | HANDWOVEN | 100% PREMIUM WOOL

|                     |                   |
|---------------------|-------------------|
| CONSTRUCTION:       | Hand Woven        |
| APPEARANCE:         | Cut Pile          |
| YARN/FIBER CONTENT: | 100% Premium Wool |
| DYE METHOD:         | Skein Dyed        |
| PILE WEIGHT:        | 78.78 oz/sy       |
| TOTAL WEIGHT:       | 120.92 oz/sy      |
| PILE HEIGHT:        | 0.31" (8 mm)      |
| BACKING:            | Latex-Cotton      |
| EDGES:              | Hand Serged       |
| ADA COMPLIANT:      | No                |
| COUNTRY OF ORIGIN:  | India             |

### PERFORMANCE

FLAMMABILITY: PILL TEST CPSC FF-1-70, 16CFR-1630.4, ASTM D2859-96

**NOTES:** Hand-Dyed yarns create a dramatic ombre effect in this group of area rugs. Hand-Loomed of wool, the color palette of subtle to intense hues will highlight any room.

**COLORS:** 6 Colors



SHD01 Shade



SHD01 Indigo



SHD01 Sand



SHD01 Slate



SHD01 Madder

### SHADOW



SHD01 Elderberry



# GFS vol 1 Area Rugs – Hand Loomed and Woven

## GUESTROOM FLOORING SOLUTIONS | HANDLOOMED | 100% PREMIUM WOOL

|                     |                   |
|---------------------|-------------------|
| CONSTRUCTION:       | Hand Loomed       |
| APPEARANCE:         | Loop Pile         |
| YARN/FIBER CONTENT: | 100% Premium Wool |
| DYE METHOD:         | Skein Dyed        |
| PILE WEIGHT:        | 73.73 oz/sy       |
| TOTAL WEIGHT:       | 123.87 oz/sy      |
| PILE HEIGHT:        | 0.39" (10 mm)     |
| BACKING:            | Latex-Cotton      |
| EDGES:              | Hand Serged       |
| ADA COMPLIANT:      | No                |
| COUNTRY OF ORIGIN:  | India             |

### PERFORMANCE

|               |                                                      |
|---------------|------------------------------------------------------|
| FLAMMABILITY: | PILL TEST CPSC FF-1-70, 16CFR-1630.4, ASTM D2859-96: |
|---------------|------------------------------------------------------|

**NOTES:** Understated elegance with a strong textural aesthetic. Fine wool blend area rugs are masterfully woven resulting in a refined look. The soft and subtle tones are perfect ground for a dramatic setting yet make a statement on their own.

**COLORS:** 5 Colors



PIM01 Rainfall



PIM01 Riverstone



PIM01 Grain



PIM01 Midnight

PIMA



PIM01 Quarry

## GUESTROOM FLOORING SOLUTIONS | HANDWOVEN | 100% PREMIUM WOOL

|                     |                   |
|---------------------|-------------------|
| CONSTRUCTION:       | Hand Woven        |
| APPEARANCE:         | Loop Pile         |
| YARN/FIBER CONTENT: | 100% Premium Wool |
| DYE METHOD:         | Skein Dyed        |
| PILE WEIGHT:        | 70.78 oz/sy       |
| TOTAL WEIGHT:       | 120.92 oz/sy      |
| PILE HEIGHT:        | 0.39" (10 mm)     |
| BACKING:            | Latex-Cotton      |
| EDGES:              | Hand Serged       |
| ADA COMPLIANT:      | No                |
| COUNTRY OF ORIGIN:  | India             |

### PERFORMANCE

|               |                                                      |
|---------------|------------------------------------------------------|
| FLAMMABILITY: | PILL TEST CPSC FF-1-70, 16CFR-1630.4, ASTM D2859-96: |
|---------------|------------------------------------------------------|

**NOTES:** With a dense loop pile construction from 100% wool, this collection is woven to impart subtle beauty even in high-traffic areas. The handloom woven shadowbox design lends added dimension to each rug's solid shades of blue, orange, green, yellow, and brown.

**COLORS:** 8 Colors



TAY01 Gold



TAY01 Sky Blue



TAY01 Denim



TAY01 Taupe



TAY01 Latte



TAY01 Charcoal



TAY01 Ivory

TAYLOR



TAY01 Navy

(Close-Ups)

CONTACT YOUR LOCAL REP FOR CAPABILITIES AND COSTING OR CONTACT NOURISON at 800-223-1110.

CONTACT YOUR LOCAL REP FOR CAPABILITIES AND COSTING OR CONTACT NOURISON at 800-223-1110. [www.nourison.com](http://www.nourison.com)



# GFS vol 1 Area Rugs – Hand Tufted

## GUESTROOM FLOORING SOLUTIONS | HANDTUFTED | 100% PREMIUM WOOL

|                     |                   |
|---------------------|-------------------|
| CONSTRUCTION:       | Hand Tufted       |
| APPEARANCE:         | Cut and Loop Pile |
| YARN/FIBER CONTENT: | 100% Premium Wool |
| DYE METHOD:         | Abrash            |
| PILE WEIGHT:        | 53.09 oz/sy       |
| TOTAL WEIGHT:       | 70.78 oz/sy       |
| PILE HEIGHT:        | 0.24" (6 mm)      |
| BACKING:            | Cloth Backing     |
| EDGES:              | Hand Serged       |
| ADA COMPLIANT:      | No                |
| COUNTRY OF ORIGIN:  | India             |

### PERFORMANCE

FLAMMABILITY: PILL TEST CPSC FF-1-70, 16CFR-1630.4, ASTM D2859-96:

NOTES: 100% wool gives this textured collection a dramatic tactile appeal. Hand Tufted in a cut and loop construction, emulating the look of a Tibetan hand knotted area rug, this cool tones palette has a warm, urban feel that underlines effortless.

COLORS: 4 Colors



DLE01 Fog



DLE01 Dusk



DLE01 Nightshade

### DALE



DLE01 Bone

## GUESTROOM FLOORING SOLUTIONS | HANDTUFTED | 100% NZ WOOL

|                     |                                |
|---------------------|--------------------------------|
| CONSTRUCTION:       | Hand Tufted                    |
| APPEARANCE:         | Cut Pile                       |
| YARN/FIBER CONTENT: | 100% NZ Wool                   |
| DYE METHOD:         | Skein Dyed                     |
| PILE WEIGHT:        | 103.23 oz/sy                   |
| TOTAL WEIGHT:       | 129.18 oz/sy                   |
| PILE HEIGHT:        | 0.39" (10 mm)                  |
| BACKING:            | Latex-70% Polyester 30% Cotton |
| EDGES:              | ADD Treatment (hand serged?)   |
| ADA COMPLIANT:      | ADD YES OR NO                  |
| COUNTRY OF ORIGIN:  | China                          |

### FINISHING

TREATMENTS: Mothproof, Stain and Static Resistant in the dye stage

### PERFORMANCE

FLAMMABILITY: PILL TEST CPSC FF-1-70, 16CFR-1630.4, ASTM D2859-96

FLOORING RADIANT PANEL ASTM E-648

SMOKE DENSITY ASTM E-662

NOTES: Luxuriously textured, this collection of handcrafted rugs in 100% New Zealand wool pile reflects the highest standards of craftsmanship and attention to detail. A special luster wash imbues each rug with a subtle and uniquely elegant patina.

COLORS: 7 Colors



SAA17 Shade



SAA01 Rust



SAA12 Slate



SAA09 Copper



SAA14 Ivory



SAA10 Light Green

### STRIA



SAA18 Indigo



# RUGS FROM RUNNING LINE BROADLOOM



**Cotton Blend Wide Binding Edges**

Nourison Hospitality offers a vast selection of stocked ranges of running-line carpet and rugs that exceed most expectations. We also fabricate rugs from running-line broadloom qualities in short lead times.

[COMMERCIAL GRADE BROADLOOM CARPET](#)

[COMMERCIAL GRADE AREA RUGS](#)

[NOURISONHOSPITALITY.COM/PRODUCTS](https://nourisonhospitality.com/products)