

# Hospitality Table Top Options





# LAMINATE

**Construction:** layers of plastic bonded to particleboard or kraft paper to create a durable surface.

**Benefits:**

- low cost
- lots of variety

**Downsides:**

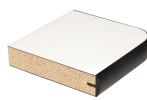
- can scratch
- not for outdoor use

**Edge Options:**

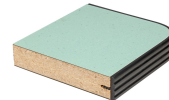
- vinyl
- PVC
- laminate
- wood



Vinyl



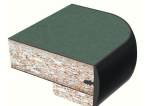
L-15



L-18



L-21

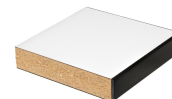


L-23

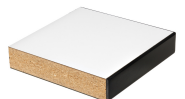
PVC/Self



P-10



P-12



P-14



PK-2

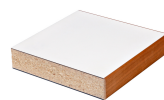


PK-4



LC-9

Wood



W-12



W-16



W-17



W-18



W-19



W-23



W-32



# WOOD

**Construction:** Made from solid wood, typically maple or oak. Can be plank or butcher block.

**Benefit:**

- many stains/finishes available

**Downsides:**

- requires regular maintenance
- typically not for outdoor use

**Edge Options:**

- Square/Eased
- Bullnose
- Full/Half Round
- Cove
- Full/Half Bevel
- Ogee
- More edges available upon request!



Full Bullnose

Full Roundover

Half Round

Cove

Ogee

Bevel

Eased





# WOOD VENEER

**Construction:** thin layer of hardwood bonded to particle board or kraft paper to create a solid surface.

**Benefits:**

- many stains/finishes available

**Downsides:**

- not as durable as solid wood
- typically not for outdoor use

**Edge Options:**



V-12



V-16



V-17



V-18



V-19



V-23



V-32



# SOLID SURFACE

**Construction:** 33% binding resins and 66% minerals.

**Benefit:**

- cost effective when compared to granite.
- non-porous = sanitary
- easy to repair
- large variety of colors and patterns

**Downsides:**

- can scratch
- does not hold up to high heat

**Edge Options:**



Bullnose



Eased

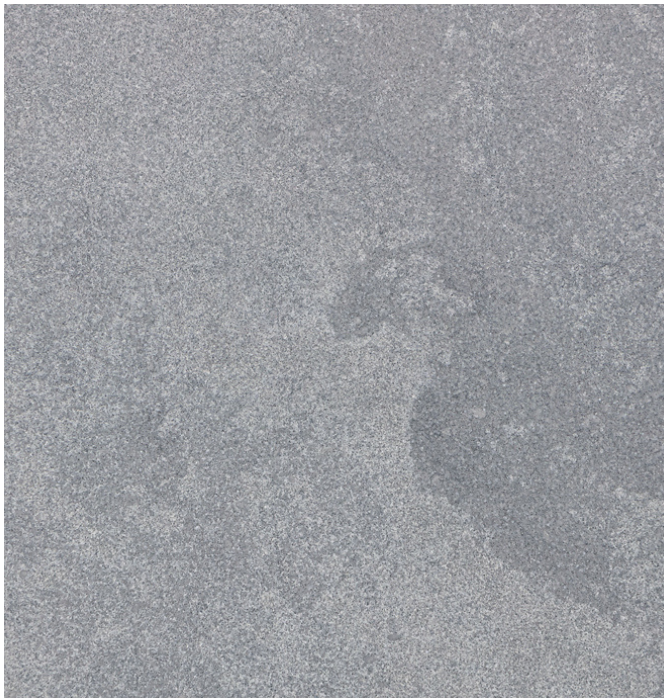


Knife



Waterfall

More edges available on request!





# QUARTZ

**Construction:** 94% ground quartz and polyester resins as a binding agent plus pigments for color.

**Benefits:**

- non-porous = no sealing required, bacteria resistant
- stain- and scratch-resistant
- large variety of colors

**Downsides:**

- costly
- cannot be repaired
- not heat-resistant

**Edge Options:**



Bullnose



Eased



Knife



Waterfall

More edges available on request!





# GRANITE

**Construction:** 100% natural stone.

**Benefits:**

- limitless selection
- heat resistant; appropriate for outdoor use

**Downsides:**

- porous; needs to be sealed regularly
- not resistant to bacteria

**Edge Options:**



Bullnose



Eased

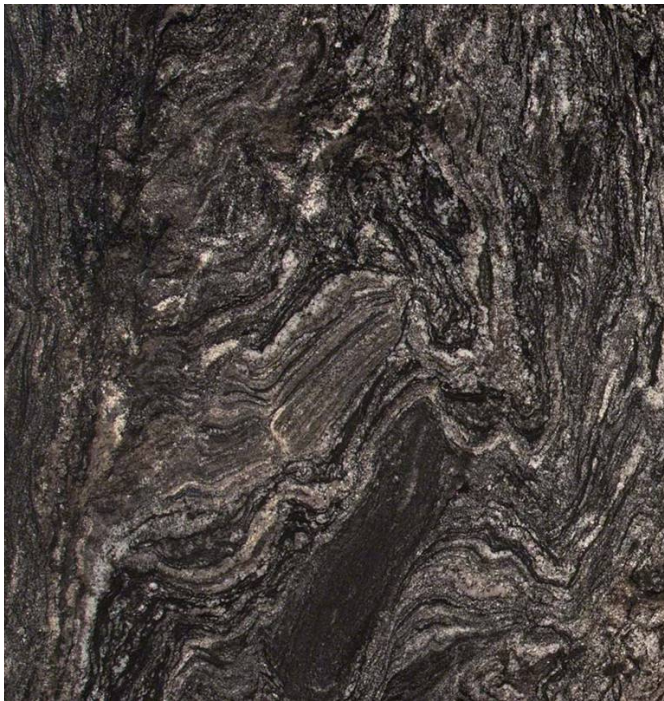


Knife



Waterfall

More edges available on request!





# METAL

**Construction:** Made from stainless steel

**Benefit:**

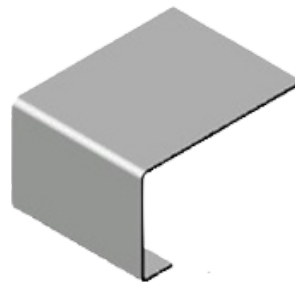
- will not burn or rust
- stain- and bacteria-resistant

**Downsides:**

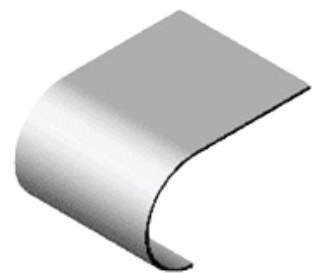
- expensive
- can scratch and dent

**Edge Options:**

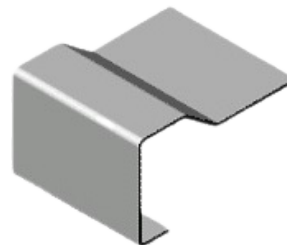
- Square/Eased
- Bullnose
- Marine
- Raised V



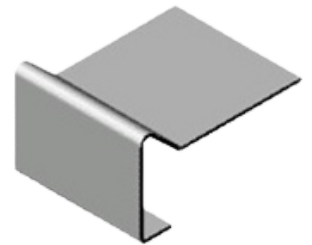
Straight



Bullnose



Marine



Raised V



# OUTDOOR

**Construction:** Made with materials able to withstand outdoor conditions

**Types Available:**

- Molded laminate
- Real Teak
- Faux Teak
- High Pressure Laminate (HPL) with resin core
- Powder Coated Aluminum

