

Community Wildfire Safety Program

Visit pge.com/wildfiresafety for more information



We are working every day to improve our electric system and reduce wildfire risks.

Our Community Wildfire Safety Program (CWSP) features short-, medium- and long-term efforts to make our system safer. These include:



Reducing Wildfire Risks

Improving our infrastructure with stronger poles, covered power lines and targeted undergrounding

Expanding and enhancing vegetation safety work

Conducting inspections more frequently than regulations require in high fire-risk areas

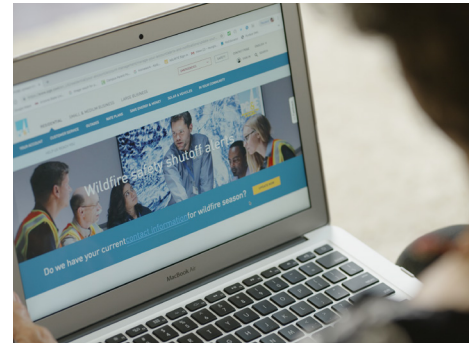


Enhancing Situational Awareness

Using better weather monitoring technology and installing new weather stations to more precisely forecast the weather that could lead to Public Safety Power Shutoff (PSPS) events

Installing more high-definition cameras in high fire-threat areas to monitor and respond to wildfires

Coordinating prevention and response efforts by monitoring wildfire risks in real time from our 24/7 Wildfire Safety Operations Center



Improving our PSPS Program

Reducing the number of customers affected by a PSPS event by one-third compared to last year

Cutting restoration times in half compared to 2019, restoring power to nearly all customers within 12 daylight hours after severe weather has passed

Providing more detailed information and improved resources to customers and communities before, during and after an event

Do you have a plan to stay safe during wildfires?

Over the past few years, high temperatures, extreme dryness and record-high winds have increased wildfire risks. Below are some steps to help keep you, your family and your home safe.



Prepare & practice a plan to make sure everyone in your home knows what to do during an emergency.



Update your contact information by visiting [pge.com/mywildfirealerts](https://www.pge.com/mywildfirealerts).



Maintain space around your home by regularly trimming bushes and trees. Visit [readyforwildfire.org](https://www.readyforwildfire.org) for more tips and information.



Build or restock your emergency kit with supplies to last a week and plan for medications that need refrigeration or medical devices that require power.

COMMUNITY WILDFIRE SAFETY PROGRAM BY THE NUMBERS

PG&E's 2019 advancements and 2020 targets for additional enhancements



System Hardening

Installing stronger poles, covered lines and/or targeted undergrounding

2019 COMPLETE

171 LINE MILES

2020 TARGET

241 LINE MILES

2019-2020 TOTAL: **412** LINE MILES



Enhanced Vegetation Management

Meeting and exceeding state vegetation and safety standards

2019 COMPLETE

2,498 LINE MILES

2020 TARGET

1,800 LINE MILES*

2019-2020 TOTAL: **4,298** LINE MILES



High-Definition Cameras

Improving our ability to monitor and respond to wildfires

2019 COMPLETE

133 CAMERAS

2020 TARGET

200 CAMERAS

2019-2020 TOTAL: **333** CAMERAS



Weather Stations

Enhancing the ability to predict and respond to severe weather

2019 COMPLETE

426 STATIONS

2020 TARGET

400 STATIONS

2019-2020 TOTAL: **826** STATIONS



Sectionalizing Devices

Separating the distribution grid into smaller parts

2019 COMPLETE

287 DEVICES

2020 TARGET

592 DEVICES

2019-2020 TOTAL: **879** DEVICES

*Does not include additional vegetation work near lower voltage transmission lines intended to both reduce wildfire risk and the footprint of future PSPS events.

Learn More

For the latest on PG&E's wildfire safety efforts, please visit [pge.com/wildfiresafety](https://www.pge.com/wildfiresafety).

To learn more about how you and your family can prepare for a PSPS event, please visit [safetyactioncenter.pge.com](https://www.safetyactioncenter.pge.com).