

2025-2027

SAN LUIS OBISPO COUNTY OPERATIONAL AREA



FIRE AND RESCUE MUTUAL AID OPERATIONS PLAN

SAN LUIS OBISPO COUNTY FIRE CHIEFS' ASSOCIATION

A.K.A Attachment "A" of the San Luis Obispo County-Wide Fire Services Mutual Aid Agreement of 1985

Table of Contents

Table of Contents	2
Requesting Agency Checklist	4
Foreword	5
Operational Guidelines	6
Channels for Requesting Fire and Rescue Mutual Aid Resources	10
OES Region I: Three-letter Identifiers for SLO County and Surrounding Fire Agencies	11
APPENDIX A.1	12
Apparatus & Equipment Requirements Mutual Aid Incidents.....	12
APPENDIX A.2	13
Personnel Safety Equipment & Supply Requirements.....	13
APPENDIX A.3	14
Operational Guidelines for Mutual Aid Strike Teams	14
APPENDIX A.4	18
Greater Alarm Structure Fire Standard Operating Guideline	18
APPENDIX A.5	18
Standard Operating Guidelines	18
□ Policy 201.00 – Incident Safety	18
□ Policy 202.00 – High Rise	18
□ Policy 205.00 – Staging	18
□ Policy 301.00 – Structure Fires	18
□ Policy 401.00 – RIC	18
□ Policy 402.00 – RIC Inventory.....	18
□ Policy 501.00 – Emergency Button Activation	18
□ Policy 601.00 – Rescue Task Force.....	18
□ Policy 701.00 – Post Fire Decontamination.....	18
APPENDIX B.1	19
Strike Team Leader Qualifications and Equipment Requirements (STEN)	19
APPENDIX B.2	20
Strike Team Leader Trainee Qualifications	20
APPENDIX B.3	21
Engine Company Officer Qualifications for SLO County Incidents.....	21
APPENDIX B.4	22
Engine Company Officer Qualifications for Strike Team Assignments on Wildland Incidents	22

APPENDIX C.1	23
Pre-designated Strike Team Assignments Outside of SLO County	23
Rotation	23
APPENDIX C.2.....	24
Pre-Designated Engine Strike Team Rotation List	24
APPENDIX C.3.....	24
Pre-Designated Strike Team Leader Schedule	24
APPENDIX D.1	25
SLO County Specialized Response Guides	25
STEN Checklist v.3.....	25
San Luis Obispo County HazMat SOG	25
San Luis County Coastal Incident Response Plan	25
San Luis Obispo Investigation Strike Team Administrative Procedures	25
San Luis Obispo County USAR SOG	25
APPENDIX E.1	26
Communications	26
San Luis Obispo Operational Area Frequency Guide.....	27-35
San Luis Obispo County Repeater Sites.....	36
APPENDIX F.1	37
San Luis Obispo County Agency ID's	37
APPENDIX F.2	38
Resource Type and Radio ID's.....	38
APPENDIX G.1	39
The Fire Management Assistance Grant (FMAG) request process	39
APPENDIX H.1	40
San Luis Obispo XSL All Hazards Incident Management Team	40
APPENDIX H.2	40
San Luis Obispo County Greater Alarm Plan	40

Requesting Agency Checklist

- ☐ INCIDENT NUMBER/REQUEST NUMBER (San Luis ECC will assign a number if none is available.)
- ☐ NUMBER OF RESOURCES NEEDED.
- ☐ TYPE OF RESOURCE(S) NEEDED / TYPE OF ASSIGNMENT
- ☐ WHEN ARE RESOURCES NEEDED? (Immediate Need, Planned Need, Next Day, Etc.)
- ☐ WHERE SHALL THE RESOURCES REPORT? (If there is no reporting location, they will automatically be sent to a designated staging area.)
- ☐ WHAT IS THE INCIDENT COMMAND AND TACTICAL FREQUENCY (Air to Ground for Wildland)?
- ☐ Request Additional Tactical Frequencies as needed

SPECIAL INSTRUCTIONS

- ☐ INCREMENTS OF FIVE ENGINES WILL AUTOMATICALLY BECOME A STRIKE TEAM OR TASK FORCE WITH A LEADER.

AGENCY PROVIDING ASSISTANCE

REQUEST #: _____ ORDER #: _____

S/T OR T/F DESIGNATOR: _____

RESOURCES REQUESTED: _____

STRIKE TEAM LEADER: _____

TYPE OF ASSIGNMENT: _____ RESPONSE CODE: _____

WHEN NEEDED: _____

REPORT TO (PERSON/LOCATION): _____

Command Frequency: _____ Tactical Frequency: _____

SPECIAL INSTRUCTIONS:

- ☐ IN SAN LUIS OBISPO COUNTY TRAVEL TO AND FROM THE INCIDENT ON THE ASSIGNED COMMAND FREQUENCY AND MONITOR COUNTY FIRE NET (FREQUENCY 154.385/153.060 MHZ)
- ☐ ADVISE SAN LUIS ECC WHEN EN ROUTE, AT SCENE, RETURNING and/or AVAILABLE.
- ☐ WHILE AT THE INCIDENT, USE THE ASSIGNED COMMAND AND TACTICAL FREQUENCIES.

Foreword

San Luis Obispo County is comprised of local and state resources that are disbursed in a manner that require effective and efficient deployment. Since resources may be limited and have significant reflex time, the cooperative use of fire resources is essential to deploy the closest resources as quickly as possible.

This cooperative assistance is provided on a reciprocal basis under the County Mutual Aid Plan in two forms:

- **Automatic Aid** – The predetermined immediate initial response to an incident
- **Mutual Aid** – Responses to augment the initial attack resources of any cooperating fire agency during a period of actual or potential need, including move-up and cover assignments

Mutual aid is dependent on recognition that equipment and resources are expected to be provided only when the dispatch of those resources will not jeopardize local response capabilities.

This San Luis Obispo Fire Services Mutual Aid Plan, “Attachment A”, intends to provide the following:

1. Upon request, provide cost-effective use of the emergency resources of all jurisdictions
2. Eliminate complex financial and legal agreements
3. Address all mutual aid responses and station coverage assignments required of the fire service, including but not limited to the following:
 - a. Fires
 - b. Rescues
 - c. Hazardous Materials
 - d. Earthquakes
 - e. Natural and Human caused disasters
 - f. EMS/Mass Casualty Incidents

Operational Guidelines

The following operational guidelines will assist Incident Commanders in planning for and using mutual aid resources. Since mutual aid is not routinely used, all Incident Commander's (IC's) must periodically review the plan to ensure that mutual aid operations are effective. Effective mutual aid relationships can be maintained through joint training activities that should incorporate the mutual aid operational plan. The San Luis Obispo County Fire Chief's Association has adopted the National Incident Management System (NIMS) and Incident Command System (ICS) in accordance with the Standard Emergency Management System (SEMS) for use on all multi-agency incidents.

A. Operational Plan

This operational plan identifies geographical areas within the County to send mutual aid resources. Each area has suppression resources, staging areas, special equipment, move-up/coverage resources, and strike team leaders identified.

B. Implementation

When an emergency incident is likely to go beyond the capabilities of the local agency, the IC will activate the SLO County Fire Mutual Aid Operational Plan.

The San Luis Emergency Command Center (SLECC) will utilize their Computer Aided Dispatch (CAD) system to query the closest appropriate resource by Automatic Vehicle Locator (AVL) or physical fire station location by distance and travel time to the incident.

As fire incidents extend beyond first alarm resource capability including local jurisdiction Auto Aid, standardization of alarm levels and basic operating principles is desirable. Standardized second and third alarms have been included in the Greater Alarm Plan. Additionally, existing standard operating guidelines for staging, safety, accountability, rapid intervention, and rehabilitation are part of the SLO County Mutual Aid Plan. These guidelines are intended to apply to structure fires that extend beyond first alarm resource capabilities. Greater alarm fire incidents are low frequency, high risk events that require mutual aid resources from within our operational area to perform in a coordinated manner. Further standard operating guidelines can be found in Appendix A.4.

Additionally, any Chief Officer and/or the San Luis Obispo Operational Area Coordinator can request move-up and cover resources from agencies throughout the County to mitigate resource deficiencies caused by a local immediate need response.

Requests for resources should be placed by incident need in e.g. *three type 1 engines and a truck company, or the five closest engines, etc.*

C. Procedure

The fire agency requesting assistance will contact the SLECC using the assigned Command Frequency, contacting the local PSAP for the agency having jurisdiction, or the EMERGENCY TELEPHONE (805) 543-4242. San Luis ECC will make the initial dispatch by phone or radio and advise the OES Operational Area Fire Rescue Coordinator. If the Duty Officer in the SLECC determines there is a resource deficiency in any given geographic area of the County, the Duty Officer will monitor and/or adjust, to those operational areas that may be resource deficient.

D. Communications

1. All resources sent by San Luis ECC will contact San Luis ECC and remain on designated command frequency or assigned travel net until they enter the jurisdiction of the requesting agency, or upon arrival at the incident. At which time, units shall switch to the assigned Command and Tactical frequencies as directed by the IC. County Net will serve as a “guard” or “hailing” net in the event the San Luis ECC or others need to contact units while enroute to or from an incident. If a leader escorts a strike team or task force, the leader will be responsible for all necessary radio contacts with San Luis ECC, not each individual unit.
2. San Luis ECC will advise requesting agencies of all estimated arrival times. All resources will advise San Luis ECC when they have arrived.
3. Leaders and resources sent to a staging area will check in with the Staging Area Manager or the IC, and switch to assigned tactical frequency.
4. Strike Team communications:
 - a. In-county Strike Teams use County Net (154.385 MHz) as a hailing net or the assigned Command frequency as they travel in the County.
 - b. Out of County Strike Teams use and monitor CESRS direct 153.7550 MHz (Receive & Transmit), CESRS repeat 153.7550 MHz (Mobile Receive) & 154.9800 MHz (Mobile Transmit) or *other assigned frequency*.
5. Command and Tactical Nets
 - a. Mutual Aid and countywide frequency management is the responsibility of the San Luis ECC. With any system, controls and discipline must be exercised to reduce excessive radio traffic and confusion. To ensure smooth and orderly radio communications, the San Luis ECC is to coordinate and broadcast the assignment of command and tactical radio frequencies to units on mutual aid incidents.
 - b. COUNTY NET – This is the radio net that is used to dispatch mutual aid resources. During response, units are to acknowledge response and travel to the incident monitoring County Net. When the responding unit enters the jurisdiction of the requesting agency or arrives at the incident the unit is to switch frequencies to a Command or Tactical channel as directed by the IC. All communications between responding units and the San Luis ECC will be on this frequency unless directed otherwise. County Net will also serve as a “guard” or “hailing” net in the event San Luis ECC or others need to contact responding units while enroute.
 - c. COMMAND NET – The purpose of the Command Net is for the IC to communicate to the jurisdictional dispatch center and for Command functions at the incident.
 - d. TACTICAL NET(s) – Tactical frequencies are assigned to incidents for at-scene radio communications and are used for communications on an incident between

the IC and the resources assigned to an incident. All countywide Tactical Nets should be requested from the San Luis ECC.

- e. **CALCORD** – The purpose of this frequency is to allow two-way radio communication between the different emergency disciplines such as law enforcement, fire service, emergency medical, and public works. This frequency has been adopted as a default tactical net for EMS incidents.
- f. **CESRS** is restricted for all tactical use and administrative communications. Authorized uses are:
 - i. Emergency vehicle to dispatch communications.
 - ii. Emergency vehicle-to-vehicle communications.
 - iii. Initial contact, recall and/or reassignment of personnel and equipment.
 - iv. Contact channel during long distance travel by overhead, strike teams, etc.

The purpose of this channel is limited to ground resources enroute to/from an incident outside their home base and not to be used for routine administrative traffic or as a tactical net. **Strike teams or personnel dispatched out of their local Operational Area (San Luis Obispo County) are to monitor the CESRS Net while in route to an assigned incident or mobilization/staging area.**

E. Limited Local Resource Procedure

When resources in the county reach minimum draw-down levels, the Operational Area Coordinator should initiate daily conference calls to:

1. Identify available resources
2. Identify issues and local concerns
3. Discuss deployed resource activities
4. Discuss ongoing fire threat in California
5. Request expansion of each jurisdiction's Initial Attack area

F. Immediate Need Assignments

1. In immediate need situations, responding mutual aid resources must be enroute to the incident within 3-5 minutes of the request.
2. If an agency is unable to respond within established time limits, that agency should notify San Luis ECC as soon as possible, so a replacement resource can be found.
3. The closest appropriate resources should be used to fill an immediate need assignment.
4. At the discretion of the Strike Team Leader (STL), engines can stage and form-up before leaving the county or respond to the incident and then form-up.
5. For immediate need request within SLO County, units should respond directly to the incident for an assignment. The assigned STL/TFL form up with resources upon his/her arrival.
6. Immediate need strike teams may travel Code 3 to the incident.
7. Area's north of the Coastal Range of Santa Barbara County including Solvang, Buellton, Lompoc, Santa Maria, Guadalupe and areas south of San Ardo in Monterey County, including Bradley and Lockwood, are considered immediate need areas.

G. Planned Need Assignments

The San Luis ECC will contact the STL, who in conjunction with the San Luis ECC, will determine the form-up location and departure time. Departure time will usually be estimated as 1 hour plus the furthest resource travel time to the form-up location. (Typically, a maximum of 2 hours.)

1. Planned need strike teams shall be filled based on resource type request and agency rotation to fill.
2. In planned need situations, mutual aid resources must be at the form-up location within 2 hours unless otherwise stated.
3. If an agency is unable to respond within established time limits, that agency should notify San Luis ECC as soon as possible, so a replacement resource can be found.

H. Standing Orders for Municipal Resources

1. Master Mutual Aid – call agencies for approval
2. FMAG – call agencies for approval
3. CFAA – send

I. While enroute and returning, use the assigned command frequency or Local Net, unless directed otherwise. Units should monitor the County Net Radio Frequency (154.385).

J. If responding with a Strike Team Leader or Task Force Leader, communications should be coordinated through your leader.

K. Respond to assigned staging area or the specific assignment given.

L. Upon arrival, check-in and notify the San Luis ECC.

M. Training and Equipment Requirements

The overall success of the fire mutual aid system requires provision of proper equipment and training for the incident assignment. Contained in the appendices of this plan are the requirements for equipment and training. The training standards contained within this plan are consistent with the California Incident Command Certification System (CICCS). These standards apply to “all risks” incidents that historically involve movement of resources from one agency to the other. These typically include incidents such as wildfire, floods, urban search and rescue, earthquakes, and major hazardous materials incidents. These standards would not necessarily apply to incidents that are routine responses within an agency or department.

Channels for Requesting Fire and Rescue Mutual Aid Resources

Need	DETERMINE INCIDENT NEEDS
Who	LOCAL FIRE CHIEF/ INCIDENT COMMANDER
Action	ACTIVATES LOCAL FIRE & RESCUE MUTUAL AID PLAN



Need	EVALUATE AREA SITUATION AND AVAILABLE RESOURCES
Who	OPERATIONAL AREA FIRE & RESCUE COORDINATOR
Action	ACTIVATES AREA FIRE & RESCUE MUTUAL AID PLAN



Need	EVALUATE REGION SITUATION AND AVAILABLE RESOURCES
Who	REGIONAL FIRE & RESCUE COORDINATOR
Action	ACTIVATES REGIONAL FIRE & RESCUE MUTUAL AID PLAN



Need	EVALUATE STATEWIDE SITUATION AND AVAILABLE RESOURCES
Who	STATE FIRE & RESCUE COORDINATOR
Action	COORDINATES INTERREGIONAL FIRE & RESCUE RESOURCES MOBILIZATION

OES Region I: Three-letter Identifiers for SLO County and Surrounding Fire Agencies

ATA	ATASCADERO FD
ATS	ATASCADERO STATE HOSPITAL FD
BEU	CAL FIRE, SAN BENITO-MONTEREY UNIT
BOB	CAMP ROBERTS FD
CMB	CAMBRIA FPD
CMC	CAIFORNIA MEN'S COLONY FD
FIV	FIVE CITIES FIRE AUTHORITY
FKU	CAL FIRE, FRESNO-KINGS UNIT
HCF	HEARST CASTLE FD
LPF	USFS, LOS PADRES
MRB	MORRO BAY FD
PRF	PASO ROBLES FD
SBC	SANTA BARBARA COUNTY FD
SLC	SAN LUIS OBISPO COUNTY FD
SLO	SAN LUIS OBISPO CITY FD
SLU	CAL FIRE, SAN LUIS OBISPO UNIT
SMF	SAN MIGUEL FPD
SMR	SANTA MARIA FD
SMV	SANTA MARGARITA FPD
TEM	TEMPLETON FPD

APPENDIX A.1

Apparatus & Equipment Requirements Mutual Aid Incidents

1. Apparatus

All apparatus must meet the following requirements or should not be dispatched:

- a. All apparatus must meet FIREScope engine typing standards.
- b. The number of personnel responding shall not exceed available seating provided.
- c. Minimum staffing levels on apparatus:
 - i. Immediate need within SLO County should be at least two (2) personnel, one shall be Engine Boss qualified.
 - ii. Planned need or Out of SLO County should be a minimum of three (3) or as specified in the FOG (ICS 420-1).
- d. For out of SLO County responses, engines must be capable of maintaining an average speed of 60 MPH on highway and 30 MPH on a 7% grade.

2. Equipment

In addition to the equipment listed in the FOG Manual, apparatus shall be equipped with the following:

- a. Mobile and Portable Radio with updated State Radio Programming, County Fire Net (154.385/153.060), and CESRS direct 153.7550 MHz (Receive & Transmit), CESRS repeat 153.7550 MHz (Mobile Receive) 154.9800 MHz (Mobile Transmit).
- b. Cellular phone, iPad, or computer to complete Incident Check in and Electronic F-42.
- c. Food & water rations for a 72-hour period.
- d. Hydrant adapters for 4.0 & 4.5 NH hydrant outlets. (Type 1 or 2 Engines)
- e. Recommended spare repair parts carried on apparatus include:
fuel filters, fan belts, radiator hoses, hose clamps, and headlights.
- f. Class A foam is recommended
- g. Relevant ICS Forms – ICS 214, ICS 225,

APPENDIX A.2

Personnel Safety Equipment & Supply Requirements

Mutual Aid Incidents

Each personnel shall be fully equipped with Industry approved protective clothing and safety equipment.

1. Safety Equipment

Each member responding shall be equipped with the following:

- a. Brush helmet with goggles, shroud, and headlamp
- b. Full coverage wildland protective clothing worn over cotton or fire-resistive clothing (See Appendix A.3)
- c. Wildland gloves with Nomex cuffs
- d. Lace or zipper-laced boots with lugged soles
- e. Fire shelter on belt or web gear
- f. Canteen or equivalent
- g. Complete structural protective clothing, including boots, pants, coat, helmet, and gloves
- h. Escape bee veils - recommended
- i. Handheld Programmable Radio

2. Personal Supplies (minimum required)

- a. Two (2) changes of clothing, including cotton undergarments & tee shirts, extra socks
- b. Eye drops, OTC pain reliever, personal medication, hygiene items, and misc. supplies as needed
- c. Sleeping bag, tent/cot

APPENDIX A.3

Operational Guidelines for Mutual Aid Strike Teams

1. Practice Lookout, Communications, Escape Routes, and Safety Zones on every incident.
2. Recognize that as the Company Officer, your primary responsibility is to act as the Safety Officer for your engine company.
3. Wear complete personal protective equipment (PPE) required for your assignment.
4. Avoid parking your engine in any geographical feature where you could be at risk from the fire. Complete a risk assessment with the STEN and make sure escape routes, safety zones or TRA's are identified and communicated to all crew members. This applies to geographical features such as chimneys, bowls, saddles, box canyons, drainages, ridge tops, and mid-slope roads, etc.
5. Take care of your crew and maintain accountability. Feed, water, and rest your crew so that they can perform at their best. Provide encouragement, information, updates, and feedback on crew performance.
6. Respect private property rights. Unless required for emergency operations, avoid entering or using private property without permission.
7. If the STEN approves of resting your crew(s) while on assignment, you should follow the 2 Awake Rule. Radio communications must be constantly monitored.
8. Take care of your vehicle and equipment. Even though you are assigned to a fire, you must perform regular inspections and maintenance.
9. Avoid storing flammable equipment (gear bags/sleeping bags) on the exterior of your engine.
10. Remember to keep vehicle doors/windows closed and have ember protection on air filters.
11. Stay current with required paperwork. Immediately report all injuries, accidents, and damage. F-42's should be completed with your entire strike team to maintain consistency of documentation. FC-33's should be updated daily for Cal Fire employees either online or with the time unit.

Operational Guidelines for Mutual Aid Strike Teams (*continued*)

NOTIFY THE STRIKE TEAM LEADER IF ANY OF THE FOLLOWING CONDITIONS EXIST OR ARE ANTICIPATED:

- ☐ If Lookouts, Communications, Escape Routes, and Safety Zones (LCES) are not established.
- ☐ If you have been given an unsafe assignment or assigned a task that you and your crew are not capable of carrying out. Speak up and refuse!
- ☐ Hazardous conditions that present a threat to personnel or equipment safety.
- ☐ Significant or unexpected changes in fire behavior.
- ☐ Significant or unexpected changes in the weather.
- ☐ Fire downslope of you, spot fires, or fire crossing control lines, or roads.
- ☐ Downed power lines or other overhead hazards (snags).
- ☐ Water supply shortages, pressure increases or decreases.
- ☐ Communication problems or loss of radio contact (report face-to-face).
- ☐ Civilians that may need to be evacuated or refusing to evacuate.
- ☐ Animals or livestock that may need to be evacuated.
- ☐ Injuries or near-misses to civilians or firefighters, no matter how slight.
- ☐ Property damage caused by our actions, no matter how slight.
- ☐ Forced entry of any structures, gates, fences, etc.
- ☐ Less than ½ tank of fuel in your vehicle.
- ☐ Irrate or overly distraught civilians that may need assistance or calming.
- ☐ Operational or supply needs. Allow time for the supply system to work.
- ☐ Problems with other agencies that affect Safety/Operations/Supply.
- ☐ Changes in personnel or if a relief crew is scheduled to arrive.

Remember to ask questions and communicate new information to the STEN. It is impossible for one person to keep track of everything that may be happening.

STRIKE TEAM / TASK FORCE LEADER EXPECTATIONS: Strike Team Engine (STEN) / Task Force Leader (TFLD) must have the capability and experience for managing, coordinating, and directing the actions of fire crews/companies at a wide variety of emergency situations. This includes maintaining all required records and ensuring that logistical needs are met during the entire deployment of the strike team/task force.

The Strike Team (Engine) / Task Force Leader is Responsible for:

1. Overall safety and condition of strike team personnel and equipment. This includes emergency operations, while in staging areas / mobilization centers, when travelling to, and returning to home jurisdictions.
2. Movement of the strike team while traveling to and returning from the emergency.
3. Operational deployment of the strike team at the incident, as directed by the Incident Commander, or other member of the Incident Management Team.
4. Familiarity with strike team operations, including assembling, responding, and directing the actions of the assigned units while maintaining accountability.
5. Assembling the units at the incident if the strike team is dispatched for an Initial Attack.
6. Contacting the Cal OES AREP for assistance with problems encountered at the incident, including mechanical, operational, or logistical issues.
7. Ensuring your vehicle has adequate communications capability. (FIREScope Field Operations Guide, ICS 420-1, Appendix A)
8. Submitting all Emergency Activity Record (F-42) forms for each engine company to Cal OES Fire & Rescue Division, 3650 Schriever Ave., Mather, CA, 95655.
9. Maintaining positive public relations for Cal OES, the incident, the agencies represented on your Strike Team/Task Force, and the California Fire Service.
11. Serve as the agency representative for assigned resources from and maintain communications with the assigned agencies home unit and the ECC / Operational Area Coordinator.
 - Communications should include but not limited to status of the Strike Team upon arriving at the incident, work rest cycle, any updates on crew members (injuries, crew swap needs, etc.) status of the apparatus/equipment (repairs, damage, etc.)
 - a. These updates should be communicated at a minimum on rest days when you come off the line with an email to each responding agencies Fire Chief, the Op Area Coordinator and the SLU ECC Staff.
 - b. You should also communicate and check in with the assigned OES Chief upon arrival at the incident and on your rest days.
12. Prior to departing you should provide the ECC with a roster of your assigned resources and your ETA to the incident. You should be aware of the Incident Briefing Cycle (time) and do your best to safely arrive and check in at the incident prepared for an assignment. This includes having all apparatus fueled and logistical needs met (food, water, ice) during the check-in process.
 - Clearly communicate the expectations you have for yourself as their leader. Provide for their safety, logistical support, and obtain a meaningful assignment to meet incident objectives.

- Clearly communicate your expectations of them: Work safely with a purpose that meets incident objectives, communicate safety concerns and/or crew needs, follow the guidance established for both work and rest periods.
 - The Strike team must stay together for sleeping accommodations. Don't allow the Strike Team to separate.
 - Address any mechanical issues as soon as possible and effectively manage the repairs to minimize operational impacts.
 - The goal is to keep our workforce, apparatus, and equipment ready to complete the mission.

13. Incident Personnel Performance Rating – ICS 225

- a. An ICS 225 will be completed by the Strike Team Leader on each Engine Company Officer / Engine Boss at the completion of each assignment and reviewed with the Employee.
- b. The STEN /TFL will provide a copy of the completed and signed ICS 225 to the Agency Fire Chief upon returning from the assignment.
- c. A 360 ICS 225 evaluation will be completed by each Company Officer/Engine Boss on the assigned STEN / TFL at the conclusion of each assignment. This will be completed anonymously and collected by a Captain assigned to the Strike Team. The ICS 225 will be provided to the San Luis Obispo Operational Area Coordinator upon completion of the assignment and reviewed by the San Luis Obispo County Fire Chief's Mutual Aid committee.

14. Strike Team Leader / Overhead Refresher Training

- a. The Operational Area will host a Strike Team Leader / Overhead Refresher in coordination with Cal OES annually.
- b. Strike Team Leaders and Strike Team Leader Trainees shall attend the refresher course at least once every two years.
- c. If a Strike Team Leader / Trainee is unable to attend the training on the scheduled dates, it is the responsibility of the Strike Team Leader / Trainee to make-up the training. Make-up training can be arranged through the SLO County Fire Chief's Mutual Aid Committee.
- d. Strike Team Leaders that are not in compliance with Refresher Training may have their status suspended by the Mutual Aid Operations Committee until the training is received.

13.

**Appendices A.4 - A.5 and Standard Operating Guidelines can be found at <https://slocountyfirechiefs.org/>

APPENDIX A.4

Greater Alarm Structure Fire Standard Operating Guideline

APPENDIX A.5

Standard Operating Guidelines

- Policy 201.00 – Incident Safety
- Policy 202.00 – High Rise
- Policy 205.00 – Staging
- Policy 301.00 – Structure Fires
- Policy 401.00 – RIC
- Policy 402.00 – RIC Inventory
- Policy 501.00 – Emergency Button Activation
- Policy 601.00 – Rescue Task Force
- Policy 701.00 – Post Fire Decontamination

APPENDIX B.1

Strike Team Leader Qualifications and Equipment Requirements (STEN)

Qualifications

1. The individual shall be a fire department employee classified as Chief Officer or Captain and must be issued Strike Team Leader Qualification by CICCIS Peer Review.
2. Out of Operational Area or Planned Need Assignments
 - a. Strike Team Leaders supervise multi-agency configuration Strike Teams. During these assignments, the STEN acts as the SLO County Operational Area Agency Representative for the assigned resources.
3. Any discrepancy in a STEN's performance shall be reviewed by the SLO County Fire Chief's Association - Mutual Aid Operations Committee.
4. Each fire department should maintain an internal list of the individuals in the Department that meet the criteria and qualifications noted above. This should be noted on a department issued Qualification Card or "Red Card".

Equipment

1. The Strike Team Leader shall have his/her own department vehicle complete with the equipment listed in Appendix A, and the following:
 - a. Mobile radio programmed with all frequencies contained in the Fire Service Field Operations Guide (ICS 420-1, Appendix A.1-Communications Guidelines) and all local government frequencies listed in the San Luis Obispo County Operational Area Plan, Appendix D.
 - b. Portable radio programmed with State load.
 - c. Cellular phone and list of important phone numbers
 - d. ICS Forms
 - e. Electronic device capable of downloading mapping platforms and accessing OES forms
 - f. Flagging tape
 - g. Food & drinking water for a 72-hour period
 - h. G.P.S. recommended

APPENDIX B.2

Strike Team Leader Trainee Qualifications

Qualifications

1. The individual shall be a fire department employee classified as Chief Officer or Captain and must be an approved Strike Team Leader Trainee by a CICCIS Peer Review Committee.

Each fire department should maintain a list of individuals that meet the criteria and qualifications noted above. This should be noted on a department issued Qualification Card or "Red Card".

Equipment

The Strike Team Leader Trainee shall have the equipment listed in Appendix A.1 in addition to the following:

- Portable radio programmed with State load.
- Cellular phone and list of important phone numbers
- ICS / OES Forms
- Electronic devices capable of downloading mapping platforms and completing OES forms.
- Flagging tape
- Food & hydration to be self-sufficient for a 72-hour period
- G.P.S. device is recommended

Evaluations

The Strike Team Leader Trainee will complete ICS 225 – Incident Personnel Rating for all assigned company officers.

The Strike Team Leader will review ICS 225's with the Trainee prior to review with the Company Officer.

The Strike Team Leader Trainee will complete an ICS 225 on the Strike Team Leader as part of the 360-degree Strike Team Leader Evaluation process.

APPENDIX B.3

Engine Company Officer Qualifications for SLO County Incidents

Qualifications

1. Required Training
 - a. The individual shall have successfully completed the training or course equivalent (listed in Appendix B.3.1) for Engine Boss.
2. Rank Classification
 - a. The individual must have obtained the rank of Company Officer, Acting Captain, Captain or above.
3. Chief Certified
 - a. The individual shall be identified and certified by the Chief of his/her fire department for certification in accordance with the CICCIS procedures.
4. Position Currency
 - a. The maximum time allowed for maintaining currency is five (5) years for all positions, other than air operations positions. Serving in a position for which the individual is qualified will also maintain the currency of a prerequisite position, providing that the individual has previously qualified in that position.

Each fire department is required to maintain a list of the individuals that meet the criteria and qualifications noted above. This should be noted on a department issued Qualification Card or "Red Card".

Equipment

The Engine Company Officer shall be equipped with the equipment listed in Appendix A.2

APPENDIX B.3.1

Engine Company Officer Qualifications for Strike Team Assignments on Wildland Incidents

Qualifications - Meets CICCIS Training Requirements for Engine Boss

1. Required Training
 - a. G-231 Wildland Training for Structural Firefighters OR
 - b. S-215 or Company Officer 2E (Course Equivalency)
 - c. S-230 and S-231 or Company Officer 2E (Course Equivalency)
 - d. *S-290 Intermediate Fire Behavior (on-line course does not meet the requirement for this position.
 - e. Annual Fireline Safety Refresher Training (RT-130)
 - f. Meets Arduous Fitness requirements
2. Recommended Training
 - a. CA-219 Firing Operations or Course Equivalency per CICCIS
 - b. S-270 Basic Air Operations
3. Rank Classification
 - a. The individual must have obtained the rank of Company Officer, Acting Captain, Captain or above.
4. Chief Certified
 - a. The individual shall be identified and certified by the Chief of his/her fire department in accordance with CICCIS procedures.
5. Position Currency
 - a. The maximum time allowed for maintaining currency is five (5) years for all positions, other than air operations positions. Serving in a position for which the individual is qualified will also maintain the currency of a prerequisite position, providing that the individual has previously qualified in that position.

Each fire department is required to maintain a list of the individuals in the department that meet the criteria and qualifications noted above.

Equipment

The Engine Company Officer shall be equipped with the equipment listed in Appendix A.2

APPENDIX C.1

Pre-designated Strike Team Assignments Outside of SLO County

To facilitate teamwork and reduce strike team assembly and response times, pre-designated strike teams have been assigned. The strike teams are designated XSL-1471 and XSL-1472. Planned need, Strike Team Leaders (STEN's) assigned from those listed in Appendix C.2 OES Strike Team identifiers will be assigned at the time of dispatch.

The XSL STEN in rotation will be contacted for deployment for the first XSL strike team requested, whether it be Type I/II or type III. If a second XSL strike team or OES strike team is requested, the 2nd out STL in rotation will be contacted for deployment. The ECC will identify available STEN's for a third strike team request using the resource availability list provided by each agency and/or IROC database.

Rotation

Local Government Strike Teams are scheduled so that each strike team is assigned for a period of one week. The list rotates every Monday morning at 0800 according to the schedule contained in the link provided in Appendix C.3. It's the STEN's responsibility to contact the San Luis ECC and the individual Strike Team departments to notify them of any changes in response status.

If a department is unable to fill a request for an Engine or a STEN, an alternate resource may be assigned from SLO County Fire or another local agency, as arranged by the San Luis ECC.

The ability to fulfill strike team request assignments outside of San Luis Obispo County will be based on the support from the participating agency Fire Chief's, including the Operational Area Coordinator and/or SLO County Fire Duty Chief. The criteria for this decision will be the availability of local resources and current and/or anticipated local fire activity.

APPENDIX C.2

Pre-Designated Engine Strike Team Rotation List

Team	STEN's	Engine Companies				
XSL 1471 Type I/II/III	See LG STEN Rotation Matrix	BOB	FIV	PRF	TEM	SLC
XSL 1472 Type I/II/III	See LG STEN Rotation Matrix	ATA	MRB	SLC	SLO	SMF
OES	See LG ST Rotation Matrix or As Assigned	SLO E-385	MRB E388	As Assigned out of OP AREA	As Assigned out of OP AREA	As Assigned out of OP AREA

Note: Request for XSL Mutual Aid Strike Teams will be filled based on the above Pre-Designated Strike Team matrix for Type I, II, or III Strike Team request. The Strike Team rotation is identified in the SLO County Mutual Aid Plan and the SLU ECC Daily Admin. Report. If an agency is unable to fill a request, an alternate engine will be utilized based on the weekly XSL availability list.

Additionally, CMB and SMR may be utilized as alternates for Pre-Designated Strike Team rotations for Type I or II requests.

APPENDIX C.3

Appendix C.3 can be view at <http://tinyurl.com/cfsluadmin>

Pre-Designated Strike Team Leader Schedule

APPENDIX D.1

SLO County Specialized Response Guides

Documents can be viewed at [SLO County Fire Chiefs](#)

STEN Checklist v.3

San Luis Obispo County HazMat SOG

San Luis County Coastal Incident Response Plan

San Luis Obispo Investigation Strike Team Administrative Procedures

San Luis Obispo County USAR SOG

APPENDIX E.1

Communications

1. STATELOAD

All resources sent by San Luis ECC will contact San Luis ECC on the assigned County Command Frequency until they enter the jurisdiction of the requesting agency. Upon arrival at the incident, units will either remain on the assigned Command frequency or switch to the Command or Tactical channel identified at the time of dispatch or as directed by the IC of the agency having jurisdiction.

Example 1: SLO City Fire is dispatched mutual aid to Atascadero for a vegetation fire. ECC advises units to respond on Local Net, upon arrival Command Frequency will be Atascadero Repeater Net, Tactical Net will be V-Fire 23, Air to Ground will be CDF A/G 1.

Example 2: Morro Bay fire is dispatched mutual aid to Running Deer Ranch for a vegetation fire. ECC advises respond on Command Frequency XSL Command 4, Tactical Frequency will be CDF Tac 7, Air to Ground will be CDF A/G 1.

County Net will serve as a secondary “guard” or “Hailing” net in the event the San Luis ECC or others need to contact units while enroute to or from an incident. Responding and returning units should monitor SL County Fire Net RX 154.3850.

If a leader escorts a strike team or task force, the leader will be responsible for all necessary radio contacts with San Luis ECC, not each individual unit.

2. San Luis ECC will monitor and track responding resources for accountability to advise requesting agencies of resource status. All resources will advise San Luis ECC when they have arrived and when they are returning and in quarters from an incident.
3. Leaders and resources sent to a staging area will check in with the staging area manager or the IC, and switch radio to assigned tactical frequency.
4. Out of County strike teams are to use and monitor CESRS direct 153.7550 MHz while enroute and/or returning from an assigned incident or mobilization/staging area.

SLO OP AREA COMMAND ZONES						
CH#	DISPLAY	RX FREQ	RX CTCSS	TX FREQ	TX CTCSS	NOTES
1	PRF CMD 1	155.1150	82.5	153.8150	82.5	PRF COMMAND 1
2	PRF CMD 2	154.2350	82.5	150.8050	110.9	PRF COMMAND 2
3	SLU LOCAL	151.3250	136.5	159.3150	OST	SLU LOCAL NET
4	XSL CMD 4	151.0550	192.8	156.0450	192.8	COUNTY COMMAND 4
5	XSL CMD 5	154.8300	186.2	156.0900	186.2	COUNTY COMMAND 5
6	XSL CMD 6	151.02500	82.5	155.55000	000.0	RIVER CMD
7	XSL CMD 7	154.17500	88.5	155.88000	000.0	BAY CMD
8	XSL CMD 8	153.86750	192.8	156.16500	000.0	MESA CMD
9	XSL CMD 9	154.14500	82.5	158.77500	000.0	5 CITIES CMD
10	ATA DISP	154.3700	131.8	156.1500	146.2	ATASCADERO CITY FIRE
11	ATA CMD 1	151.1000	131.8	154.7000	146.2	ATASCADERO FIRE CMD 1
12	SLC DISP	154.3850	82.5	156.0300	82.5	SLO COUNTY FIRE DISPATCH
13	CNYN CMD	155.1150	173.8	156.2100	173.8	CANYON COMMAND
14	CDF C1	151.3550	103.5	159.3000	OST	CDF COMMAND 1
15	CDF C2	151.2650	103.5	159.3300	OST	CDF COMMAND 2
16	VFIRE 22	154.2650	156.7	154.2650	156.7	VFIRE 22

SLO OP AREA - BATT 1

CH#	DISPLAY	RX FREQ	RX CTCSS	TX FREQ	TX CTCSS	PWR	NOTES
1	SLC DISP	154.38500	82.5	156.03000	82.5	H	
2	SLU L	151.32500	136.5	159.31500	000.0	H	
3	XSL CMD 4	151.05500	192.8	156.04500	192.8	H	
4	XSL CMD 5	154.83000	186.2	156.09000	186.2	H	
5	BAY CMD 7	154.17500	88.5	155.88000	000.0	H	
6	VFIRE 22	154.26500	156.7	154.26500	156.7	L	
7	VFIRE 23	154.29500	156.7	154.29500	156.7	L	
8	CDF T2	151.16000	192.8	151.16000	192.8	L	
9	CDF T3	151.17500	192.8	151.17500	192.8	L	
10	CDF T7	151.34000	192.8	151.34000	192.8	L	
11	CDF T8	151.37000	192.8	151.37000	192.8	L	
12	CALCORD	156.075	156.7	156.075	156.7	L	
13	XSL TAC 11	158.92500	192.8	158.92500	192.8	L	NEW
14	XSL TAC 12	155.37000	192.8	155.37000	192.8	L	NEW
15	XSL TAC 13	154.34000	192.8	154.34000	192.8	L	OLD XSL TAC 4
16	XSL TAC 14	153.95000	192.8	153.95000	192.8	L	OLD XSL TAC 5
17	XSL TAC 15	154.14500	192.8	154.14500	192.8	L	OLD XSL TAC 6/CAY TAC
18	MORRO CMD	154.13000	82.5	156.00000	82.5	H	
19	MORRO TAC	155.79000	82.5	155.79000	82.5	L	
20	CDF A/G 1	151.2200	0.0	151.2200	192.8	L	
21	SLO CITY	155.14500	167.9	154.20500	167.9	H	
22	SLO COMMON	155.95500	162.2	159.07500	162.2	H	
23	SLO TAC 1	154.31000	82.5	154.31000	82.5	L	
24	SLO TAC 2	155.02500	127.3	155.02500	127.3	L	
25	CMB FIRE	154.08500	82.5	158.76000	82.5	H	
26	MARINE 12	156.60000	000.0	156.60000	000.0	L	
27	FS LPF	170.46250	000.0	164.91250	000.0	H	
28	CMD-31 SUR	155.89500	D043	158.85000	D025	H	
29	CDF A/G 1	151.2200	0.0	151.2200	192.8	L	
30	GUARD23	168.6250	0.0	168.6250	110.9	L	

SLO OP AREA - BATT 2

CH#	DISPLAY	RX FREQ	RX CTCSS	TX FREQ	TX CTCSS	PWR	NOTES
1	SLC DISP	154.38500	82.5	156.03000	82.5	H	
2	SLU L	151.32500	136.5	159.31500	000.0	H	
3	XSL CMD 4	151.05500	192.8	156.04500	192.8	H	
4	XSL CMD 5	154.83000	186.2	156.09000	186.2	H	
5	MESA CMD C8	153.86750	192.8	156.16500	000.0		
6	5 CIT/XSL C9	154.14500	82.5	158.77500	000.0		
7	VFIRE 22	154.26500	156.7	154.26500	156.7	L	
8	VFIRE 23	154.29500	156.7	154.29500	156.7	L	
9	CDF T3	151.17500	192.8	151.17500	192.8	L	
10	CDF T7	151.34000	192.8	151.34000	192.8	L	
11	NIFC T2	168.20000	000.0	168.20000	000.0	L	
12	MARINE 12	156.60000	000.0	156.60000	000.0	L	
13	CALCORD	156.075	156.7	156.075	156.7	L	
14	XSL TAC 11	158.92500	192.8	158.92500	192.8	L	NEW
15	XSL TAC 12	155.37000	192.8	155.37000	192.8	L	NEW
16	XSL TAC 13	154.34000	192.8	154.34000	192.8	L	OLD XSL TAC 4
17	XSL TAC 14	153.95000	192.8	153.95000	192.8	L	OLD XSL TAC 5
18	SLO CITY	155.14500	167.9	154.20500	167.9	H	
19	SLO COMMON	155.95500	162.2	159.07500	162.2	H	
20	SLO TAC 1	154.31000	82.5	154.31000	82.5	L	
21	SLO TAC 2	155.02500	127.3	155.02500	127.3	L	
22	LOPEZ LAKE	151.14500	88.5	151.47500	110.9	H	
23	PSL RED	155.74500	82.5	158.89500	146.2	H	
24	FIV TAC A	153.83000	167.9	153.83000	167.9	L	
25	FIV TAC B	151.01000	167.9	151.01000	167.9	L	
26	FS LPF	170.46250	000.0	164.91250	000.0	H	
27	FS LPF ADMIN	171.55000	000.0	164.15000	000.0	H	
28	CDF A/G 1	151.2200	0.0	151.2200	192.8	L	
29	GUARD23	168.6250	0.0	168.6250	110.9	L	

SLO OP AREA - BATT 3 & 5

CH#	DISPLAY	RX FREQ	RX CTCSS	TX FREQ	TX CTCSS	PWR	NOTES
1	SLC DISP	154.38500	82.5	156.03000	82.5	H	
2	SLU L	151.32500	136.5	159.31500	000.0	H	
3	XSL CMD 4	151.05500	192.8	156.04500	192.8	H	
4	XSL CMD 5	154.83000	186.2	156.09000	186.2	H	
5	RIV CMD/XSL C6	151.02500	82.5	155.55000	000.0	H	
6	VFIRE 22	154.26500	156.7	154.26500	156.7	L	
7	VFIRE 23	154.29500	156.7	154.29500	156.7	L	
8	CDF TAC 2	151.1600	192.8	151.1600	192.8	L	
9	CDF TAC 8	151.3700	192.8	151.3700	192.8	L	
10	CDF A/G 1	151.2200	0.0	151.2200	192.8	L	
11	CALCORD	156.075	156.7	156.075	156.7	L	
12	XSL TAC 11	158.92500	192.8	158.92500	192.8	L	NEW
13	XSL TAC 12	155.37000	192.8	155.37000	192.8	L	NEW
14	XSL TAC 13	154.34000	192.8	154.34000	192.8	L	OLD XSL TAC 4
15	XSL TAC 14	153.95000	192.8	153.95000	192.8	L	OLD XSL TAC 5
16	PASO CMD 1	155.11500	82.5	153.81500	82.5	H	
17	PASO CMD 2	154.23500	82.5	150.80500	110.9	H	
18	PASO TAC	154.19000	82.5	154.19000	82.5	L	
19	TEM TAC	153.96500	82.5	153.96500	82.5	H	
20	ATA DISP	154.37000	131.8	156.15000	146.2	H	
21	ATA CMD 1	151.10000	131.8	154.07000	146.2	H	
22	ATA TAC 1	157.57500	192.8	157.57500	192.8	L	
23	ATS HOSP	155.07000	162.2	159.04500	162.2	H	
24	FS LPF	170.46250	000.0	164.91250	000.0	H	
25	FS LPF SERV	171.50000	000.0	164.82500	000.0	H	
26	LPF T3	168.26250	000.0	168.26250	000.0	H	
27	LPF T4	163.71250	000.0	163.71250	000.0	H	
28	GUARD23	168.6250	0.0	168.6250	110.9	L	

SLO OP AREA - BATT 4

CH#	DISPLAY	RX FREQ	RX CTCSS	TX FREQ	TX CTCSS	PWR	NOTES
1	SLC DISP	154.38500	82.5	156.03000	82.5	H	
2	SLU L	151.32500	136.5	159.31500	000.0	H	
3	XSL CMD 4	151.05500	192.8	156.04500	192.8	H	
4	XSL CMD 5	154.83000	186.2	156.09000	186.2	H	
5	RIV CMD/XSL C6	151.02500	82.5	155.55000	000.0	H	
6	VFIRE 22	154.26500	156.7	154.26500	156.7	L	
7	VFIRE 23	154.29500	156.7	154.29500	156.7	L	
8	CDF T2	151.16000	192.8	151.16000	192.8	L	
9	CDF T3	151.17500	192.8	151.17500	192.8	L	
10	CDF T7	151.34000	192.8	151.34000	192.8	L	
11	CDF T8	151.37000	192.8	151.37000	192.8	L	
12	CALCORD	156.075	156.7	156.075	156.7	L	
13	ATA DISP	154.37000	131.8	156.15000	146.2	H	
14	ATA CMD 1	151.10000	131.8	154.07000	146.2	H	
15	ATA TAC 1	157.57500	192.8	157.57500	192.8	L	
16	ATS HOSP	155.07000	162.2	159.04500	162.2	H	
17	FS LPF	170.46250	000.0	164.91250	000.0	H	
18	FS LPF ADMIN	171.55000	000.0	164.15000	000.0	H	
19	LPF T3	168.26250	000.0	168.26250	000.0	H	
20	LPF T4	163.71250	000.0	163.71250	000.0	H	
21	BLMCND-F	169.77500	000.0	163.02500	000.0	H	
22	BLM SOA	168.30000	000.0	168.30000	000.0	H	
23	KRN 3	155.62500	167.9	158.85000	167.9	H	
24	KRN TAC V3	151.45250	167.9	151.45250	167.9	L	
25	CANYON CMD	155.11500	173.8	156.21000	173.8	H	
26	DIABLO TAC	159.21000	179.9	159.21000	179.9	H	

SLO OP AREA - MISC

CH#	DISPLAY	RX FREQ	RX CTCSS	TX FREQ	TX CTCSS	PWR	NOTES
1	SLC DISP	154.38500	82.5	156.03000	82.5	H	
2	SLU L	151.32500	136.5	159.31500	000.0	H	
3	XSL CMD 4	151.05500	192.8	156.04500	192.8	H	
4	XSL CMD 5	154.83000	186.2	156.09000	186.2	H	
5	RIV CMD/XSL C6	151.02500	82.5	155.55000	000.0	H	
6	XSL CMD 7	154.17500	88.5	155.88000	000.0	H	AKA BAY CMD
7	XSL CMD 8	153.86750	192.8	156.16500	000.0	H	NEW MESA FUTURE
8	XSL CMD 9	154.14500	82.5	158.77500	000.0	H	AKA 5 CITIES
9	CALCORD	156.075	156.7	156.075	156.7	L	
10	VFIRE 21	154.28000	156.7	154.28000	156.7	H	
11	VFIRE 22	154.26500	156.7	154.26500	156.7	L	
12	VFIRE 23	154.29500	156.7	154.29500	156.7	L	
13	VFIRE 24	154.27250	156.7	154.27250	156.7	L	
14	VFIRE 25	154.28750	156.7	154.28750	156.7	L	
15	VFIRE 26	154.30250	156.7	154.30250	156.7	L	
16	CDF T2	151.16000	192.8	151.16000	192.8	L	
17	CDF T3	151.17500	192.8	151.17500	192.8	L	
18	CDF T7	151.34000	192.8	151.34000	192.8	L	
19	CDF T8	151.37000	192.8	151.37000	192.8	L	
20	FHL CMD	163.53750	100.0	165.06250	000.0	H	
21	FHL TAC 1	171.70000	000.0	171.70000	000.0	L	
22	FHL TAC 2	173.20000	000.0	173.20000	000.0	L	
23	FHL TAC 3	173.55000	000.0	173.55000	000.0	L	
24	MTY GOLD	156.00000	146.2	154.10000	146.2	H	
25	MTY RED	151.16000	146.2	155.95500	103.5	H	
26	SLO COMMON	155.95500	162.2	159.07500	162.2	H	
27	SLO TAC 1	154.31000	82.5	154.31000	82.5	L	

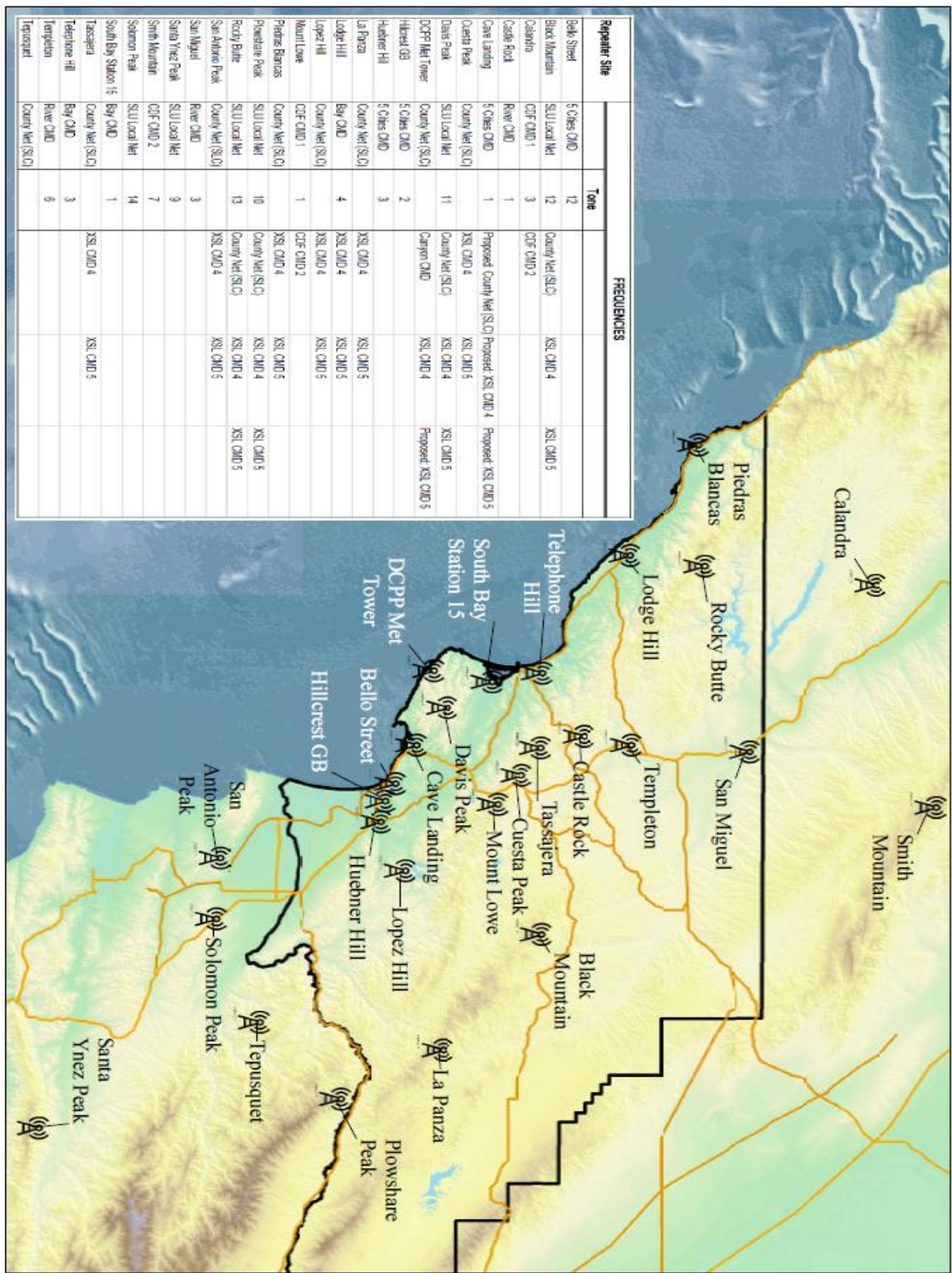
SLO OP AREA - BATT 6

CH#	DISPLAY	RX FREQ	RX CTCSS	TX FREQ	TX CTCSS	PWR	NOTES
1	SLC DISP	154.38500	82.5	156.03000	82.5	H	
2	SLU L	151.32500	136.5	159.31500	000.0	H	
3	XSL CMD 4	151.05500	192.8	156.04500	192.8	H	
4	XSL CMD 5	154.83000	186.2	156.09000	186.2	H	
5	MESA CMD C8	153.86750	192.8	156.16500	000.0		
6	5 CIT/XSL C9	154.14500	82.5	158.77500	000.0		
7	VFIRE 22	154.26500	156.7	154.26500	156.7	L	
8	VFIRE 23	154.29500	156.7	154.29500	156.7	L	
9	VFIRE 24	154.27250	156.7	154.27250	156.7	L	
10	VFIRE 25	154.28750	156.7	154.28750	156.7	L	
13	CALCORD	156.075	156.7	156.075	156.7	L	
14	XSL TAC 11	158.92500	192.8	158.92500	192.8	L	
15	XSL TAC 12	155.37000	192.8	155.37000	192.8	L	
16	XSL TAC 13	154.34000	192.8	154.34000	192.8	L	
17	XSL TAC 14	153.95000	192.8	153.95000	192.8	L	
18	XSL TAC 15	154.14500	192.8	154.14500	192.8	L	
19	MARINE 12	156.60000	000.0	156.60000	000.0	L	
20	SLO CITY	155.14500	167.9	154.20500	167.9	H	
21	SLO COMMON	155.95500	162.2	159.07500	162.2	H	
22	SLO TAC 1	154.31000	82.5	154.31000	82.5	L	
23	SLO TAC 2	155.02500	127.3	155.02500	127.3	L	
24	LOPEZ LAKE	151.14500	88.5	151.47500	110.9	H	
25	PSL RED	155.74500	82.5	158.89500	146.2	H	
26	CANYON CMD	155.11500	173.8	156.21000	173.8	H	
27	DIABLO TAC	159.21000	179.9	159.21000	179.9	H	
28	GUARD23	168.6250	0.0	168.6250	110.9	L	

SLO OP AREA - HWY166

CH#	DISPLAY	RX FREQ	RX CTCSS	TX FREQ	TX CTCSS	PWR	NOTES
1	SLC DISP	154.38500	82.5	156.03000	82.5	H	
2	SLU L	151.32500	136.5	159.31500	000.0	H	
3	XSL CMD 4	151.05500	192.8	156.04500	192.8	H	
4	XSL CMD 5	154.83000	186.2	156.09000	186.2	H	
5	MESA CMD C8	153.86750	192.8	156.16500	000.0		
6	5 CIT/XSL C9	154.14500	82.5	158.77500	000.0		
7	VFIRE 22	154.26500	156.7	154.26500	156.7	L	
8	VFIRE 23	154.29500	156.7	154.29500	156.7	L	
9	CDF T3	151.17500	192.8	151.17500	192.8	L	
10	CDF T7	151.34000	192.8	151.34000	192.8	L	
11	NIFC T2	168.20000	000.0	168.20000	000.0	L	
12	MARINE 12	156.60000	000.0	156.60000	000.0	L	
13	CALCORD	156.075	156.7	156.075	156.7	L	
14	CDF T2	151.16000	192.8	151.16000	192.8	L	
15	CDF T3	151.17500	192.8	151.17500	192.8	L	
18	CDF T4	151.19000	192.8	151.19000	192.8	L	
16	CDF T7	151.34000	192.8	151.34000	192.8	L	
17	CDF T8	151.37000	192.8	151.37000	192.8	L	
19	CDF T11	151.44500	192.8	151.44500	192.8	L	
20	CDF A/G 1	151.2200	0.0	151.2200	192.8	L	
26	FS LPF	170.46250	000.0	164.91250	000.0	H	
27	FS LPF ADMIN	171.55000	000.0	164.15000	000.0	H	
28	NIFC T2	168.20000	000.0	168.20000	000.0	L	
29	SBC C-3	153.98000	110.9	155.71500	127.3	H	
30	SBC C-4	156.13500	100.0	154.95000	114.8	H	
31	SBC C-5	154.87500	100.0	155.13000	114.8	H	
32	SBC C-6	150.99500	100.0	154.80000	114.8	H	
33	SBC T-7	155.59500	100.0	155.59500	100.0	H	
34	SBC T-10	155.64000	100.0	155.64000	100.0	L	
35	VNC C-18	151.01000	192.8	155.25000	192.8	H	
36	VNC A/G	154.23500	167.9	154.23500	167.9	L	
37	AG-41	167.47500	000.0	167.47500	000.0	L	
38	AG-24	168.63750	000.0	168.63750	000.0	L	
39	KRN 3	155.62500	167.9	158.85000	167.9	H	
40	KRN TAC V3	151.45250	167.9	151.45250	167.9	L	
41	SMR C-2	154.72500	127.3	159.09000	127.3	H	
42	SMR C-3	154.40000	127.3	159.06000	127.3	H	
43	SMR C-4	155.10000	127.3	159.16500	127.3	H	
44	SMR TAC 5	150.79000	000.0	150.79000	000.0	L	
45	GUARD23	168.6250	0.0	168.6250	110.9	L	

OES INTEROP FREQUENCIES						
CH#	DISPLAY	RX FREQ	RX CTCSS	TX FREQ	TX CTCSS	NOTES
1	VFIRE 21	154.28000	156.7	154.28000	156.7	
2	VFIRE 22	154.26500	156.7	154.26500	156.7	
3	VFIRE 23	154.29500	156.7	154.29500	156.7	
4	VFIRE 24	154.27250	156.7	154.27250	156.7	
5	VFIRE 25	154.28750	156.7	154.28750	156.7	
6	VFIRE 26	154.30250	156.7	154.30250	156.7	
7	CALCORD	156.07500	156.7	156.07500	156.7	
8	VCALL 10	155.75250	000.0	155.75250	156.7	
9	VTAC 11	151.13750	156.7	151.13750	156.7	
10	VTAC 12	154.45250	156.7	154.45250	156.7	
11	VTAC 13	158.73750	156.7	158.73750	156.7	
12	VTAC 14	159.47250	156.7	159.47250	156.7	
13	VTAC 33	159.47250	000.0	151.13750	136.5	
14	VTAC 34	158.73750	000.0	154.45250	136.5	
15	VTAC 35	159.47250	000.0	158.73750	136.5	
16	VTAC 36	151.13750	000.0	159.47250	136.5	
17	VTAC 37	154.45250	000.0	158.73750	136.5	
18	VTAC 38	158.73750	000.0	159.47250	136.5	
19	OES V1	154.16000	000.0	159.13500	000.0	
20	OES V2	154.16000	000.0	159.19500	000.0	
21	OES V3	154.22000	000.0	159.13500	000.0	
22	OES V4	154.22000	000.0	159.19500	000.0	
23	AIRGUARD	168.62500	000.0	168.62500	110.9	



APPENDIX F.1

San Luis Obispo County Agency ID's

AGENCY LISTING	NUMERICAL LISTING
ATA	7500
ATS	7900
FIV	6600
BOB	8900
CAL FIRE SLU	3400
CMB	5700
CMC	5100
DCP	9700
EMSA	9400
HCF	5900
MRB	5300
PRF	8100
SLO	9100
County OES	8800
SMF	8600
SMV	7800
TEM	7100

APPENDIX F.2

Resource Type and Radio ID's

OVERHEAD RESOURCES	RADIO IDENTIFIER	RESOURCE DESIGNATION
Fire Chief, Assistant Chief, Deputy Chief	Chief	00
Division Chief	Division	01-09
Battalion Chief	Battalion	10-19
Captain	Captain	20-29
Fire Marshal	Prevention	20-29
Fire Prevention	Prevention	20-29
Training Officer	Training	20-29
Support Personnel	Admin / Coordinator (SLO Co.)	01-09
EQUIPMENT RESOURCES	RADIO IDENTIFIER	RESOURCE DESIGNATION
Air Tanker	Tanker	
Aircraft Rescue Fire Unit	Crash	40-49
Brush Patrol	Patrol	60-69
Bulldozer Tender	Dozer Tender	40-49
Bulldozer	Dozer	40-49
Car, sedan	Admin, Unit	20-29
Crew Transport	Crew Transport	
Engine Company	Engine (BLS), Medic Engine (ALS)	60-99
Fire Mechanic	Repair	30-39
Fire Boat	Boat	40-49
Fuel Tender	Fuel Tender	40-49
Hand Crew	Crew #	
Hazardous Materials Unit	Haz Mat	40-49
Heavy Equipment Transport	Transport	40-49
Helicopter Tender	Heli tender	
Helicopter	Copter	
Heli-Tack Crew	Heli tack	
Medical / Non-Transport (ALS)	Squad, Medic Engine	50-59
Medical / Non-Transport (BLS)	Rescue, Engine	50-59
Medical / Transport (ALS only)	Medic	50-59
Mobile Kitchen Unit	Kitchen Unit	
Mobile Breathing Air Support	Breathing Support	40-49
Mobile Communications Unit	Communications	40-49
Truck Company	Truck	40-49
Utility transport	Utility, Supply	30-39
Water Tender	Water Tender	40-49

APPENDIX G.1

Fire Management Assistance Grant (FMAG) Request Process

Instructions: Prior to placing your request, please complete all sections of the ABC Form-158. Items marked with an asterisk (*) must be fully and completely answered.

When Completed: (1) Call the Cal OES Warning Center at 916-845-8911 to advise of FMAG Request; (2) Fax to Cal EMA Warning Center @ 916-845-8910, or email the document to the Warning Center: **warning.center@oes.ca.gov**

NOTE: Fire Perimeter Map and weather documentation is required when submitting this form.

Weather should be taken from the nearest RAWS station and Map should show the estimated perimeter, direction of travel and immediate threats. The ICS-209 form is no longer required upon submitting this request. The ICS-209 will be due at the next routine time required per ICS 420-1.

****CAL FIRE Units are to also fax to: (1) Sacramento ECC 916-845-8692, & (2) Either CSR-OCC 951-782-4900, or CNR-OCC 530-224-4308.*

After normal duty hours Cal OES Warning Center personnel will contact the Fire and Rescue Branch Duty Officer to process your request. You will be kept informed of the progress of your request.

FMAG Declaration Criteria

1. Threat to lives and improved property, including threats to critical facilities, infrastructure, and critical watershed areas.
2. Availability of State and local firefighting resources.
3. High fire danger conditions, as indicated by nationally accepted indices such as the National Fire Danger Ratings System.
4. Major potential economic impact.

Cal OES Form 158

[FMAG Form Fillable \(ca.gov\)](#)

APPENDIX H.1

San Luis Obispo XSL All Hazards Incident Management Team
[Mutual Aid](#)

APPENDIX H.2

San Luis Obispo County Greater Alarm Plan
July 8, 2021

As approved by the San Luis Obispo County Fire Chiefs Association, the county wide greater alarm plan has changed to the following for 2nd and 3rd alarms:

Type	Chief-Overhead	Engines (Any)	Engines Type 1/2	Trucks	Water Tenders	Breathing Support
Structure, Residential	1	3				**
Structure, Rural	1	3			1*	**
Structure, Multi-Family	1	3	1	1		**
Structure, Commercial	1	3	1	1		**
Vegetation	The Incident Commander will request additional resources as needed for the incident					

* Only to be used once (2nd alarm). All other resource orders are to be specific.

** Breathing Support must be ordered as needed, removed from auto-alarm.

Sequential alarms after 3rd will be filled in the same format as resource availability allows.
Modifications maybe made by the Operational Area Fire Coordinator as needed.