







FOR BOAT BUILDERS & DEALERS

LINK

SMART VESSEL MONITORING, CONTROL & MANAGEMENT

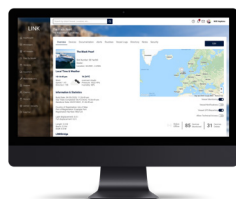
-  **REMOTE MONITORING & CONTROL**
Improve customer support through remote visibility and control of devices as though an engineer is on board.
-  **REDUCE WARRANTY COSTS**
Receive device alerts and status updates to anticipate any issues with a vessel before they arise.
-  **CUSTOM BRANDED APP AND CLOUD**
The LINKcloud and app can be custom branded to provide a complete solution for your clients.
-  **FULL INTEGRATION PORTFOLIO**
LINK Supports integration with all onboard protocols, including NMEA, KNX, Böning, and C-Zone.
-  **EASY FLEET MANAGEMENT**
Full fleet management capabilities with a global overview of vessels and their current device status.
-  **SMART HOME INTEGRATION**
Enable smart boat functionality for your clients with control of lighting, shades, climate and more.

LINK ECOSYSTEM



LINKbridge

Custom-designed hardware crafted in the UK.



LINKcloud

The central management hub for all your vessels.



LINKapp

Client-facing app offering monitoring and control.



LINKmfd app

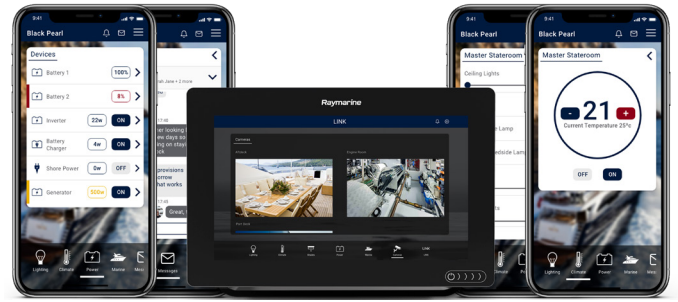
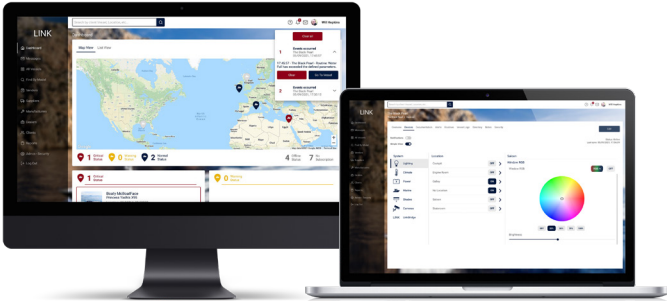
The full power of LINK available from the bridge.

LINK MONITORING

- ▶ Complete visibility of a vessel as though an engineer is on board, helping to improve remote customer support.
- ▶ Use real-time information to oversee critical devices such as engines, generators, bilge, batteries and tank levels.
- ▶ View data from instrumentation, including navigation panels, AIS, depth sounders, and environmental systems.
- ▶ Receive automated critical and warning alerts from NMEA.
- ▶ Create custom alerts that trigger based on a single condition or a combination of conditions.
- ▶ Customise which notifications you want to receive for each vessel and how to receive them, e.g. via WhatsApp or email.
- ▶ Access historical device data via comprehensive logging.

LINK CONTROL

- ▶ Integration and remote control of multiple marine systems, including NMEA, KNX, Böning, and C-Zone.
- ▶ Effortless digital switching as well as the ability to directly control the properties of a device, e.g. dim lights to 40%.
- ▶ Create automated routines to reduce warranty issues, e.g. turn on the battery chargers when battery levels are low.
- ▶ Unique Simple View transforms raw data into recognisable, easy to control devices, available in the LINKcloud and apps.
- ▶ Advanced View contains full parameters and status information for a device for improved diagnostics.
- ▶ Comprehensive suite of integration solutions to link together marine systems and smart home functionality.

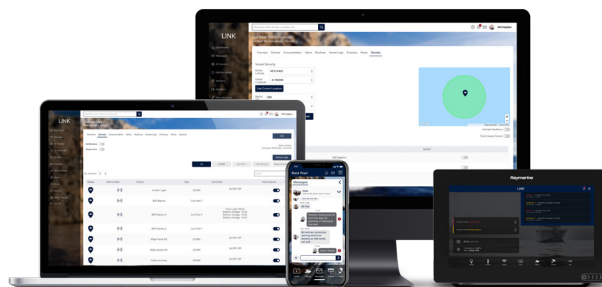


LINK SECURITY & SUPPORT

- ▶ Integrate up to 10 separate security cameras via the LINK app.
- ▶ Support for professional-grade security systems that can be integrated with LINK alerts and routines.
- ▶ Secure multi-user functionality with the ability to define exactly what data each user can access, view and control.
- ▶ LINK complies with strict data protection measures, is fully GDPR compliant and helps to achieve IMO MCS-FAL 1/circ.3
- ▶ Full audit trail logs every action performed for each vessel.
- ▶ Virtual flight case stores all vessel documentation in the LINKcloud with user permissions to limit access if required.
- ▶ Offer remote support and diagnostics to your clients.
- ▶ Messaging suite ensures effortless communication between clients, crew, maintenance teams and more.
- ▶ Form relationships with suppliers for collaborative working.

LINK BRIDGE

- ▶ Crafted from aluminium with a hardened, anodised black outer for extreme strength and durability.
- ▶ Unrivalled connectivity options, including multiple systems such as NMEA 2000, J1939, Dometic CAN and NMEA 0183.
- ▶ Use a dedicated power supply or power via a CAN port.
- ▶ Unique low power mode that can alert you of any knocks or bumps during transit when the vessel is powered down.
- ▶ Embedded eSIM and built-in Iridium Satellite transmitter ensure worldwide connectivity to transmit vessel data.
- ▶ Additional digital switching and sensing via relays and inputs.
- ▶ Generate revenue by becoming a reseller of both LINKbridge and LINK Subscriptions (required for remote functionality).



LINK

For more information or to schedule a demo:

Visit: www.smartyachts.link

Email: info@smartyachts.link