







# FOR OWNERS

# LINK

## SMART VESSEL MONITORING, CONTROL & MANAGEMENT

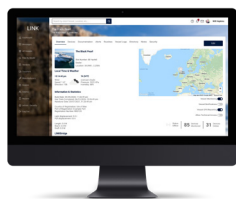
-  **REMOTE & LOCAL MONITORING**  
Monitor all your onboard devices (marine, network IP and AV) locally and from anywhere in the world.
-  **REMOTE & LOCAL CONTROL**  
Live two-way control of your onboard devices, both locally and from anywhere in the world.
-  **INSTANT ALERTS & NOTIFICATIONS**  
LINK sends device alerts and status updates to you or your crew by email, SMS or WhatsApp.
-  **FULL INTEGRATION PORTFOLIO**  
LINK Supports integration with all onboard protocols, including NMEA, KNX, Böning, and C-Zone.
-  **EASY FLEET MANAGEMENT**  
Full fleet management capabilities to manage all your vessels in one place.
-  **SMART HOME INTEGRATION**  
LINK is easy to integrate with your existing smart home system, inc Control4, Crestron, RTI and Savant.

## LINK ECOSYSTEM



### LINKbridge

Custom-designed hardware crafted in the UK.



### LINKcloud

The central management hub for all your vessels.



### LINKapp

Your vessel, in the palm of your hand.



### LINKdisplay app

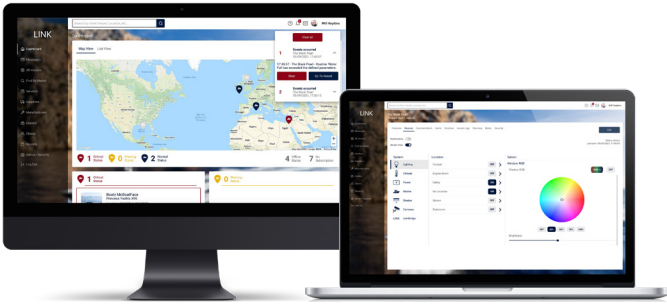
The full power of LINK available from the bridge.

## LINK MONITORING

- ▶ Complete visibility of your vessel both locally and remotely.
- ▶ Use real-time information to oversee critical devices such as engines, generators, bilge, batteries and tank levels.
- ▶ View data from instrumentation, including navigation panels, AIS, depth sounders, and environmental systems.
- ▶ Receive automated critical and warning alerts from NMEA.
- ▶ Create custom alerts that trigger based on a single condition or a combination of conditions.
- ▶ Customise which notifications you want to receive and how you wish to receive them, e.g. SMS, WhatsApp or email.
- ▶ Access to device historical data via comprehensive logging.
- ▶ Edit your dashboard to only see the data you're interested in.

# LINK CONTROL

- ▶ Unrivalled control of your vessel both locally and remotely.
- ▶ Effortless digital switching as well as the ability to directly control the properties of a device, e.g. dim lights to 40%.
- ▶ Create any scenes, including 'evening mode' and 'all off'.
- ▶ Automated routines ensure you can enjoy your time onboard without worrying, e.g. turn on charger if battery low.
- ▶ Unique Simple View transforms raw data into recognisable, easy to control devices.
- ▶ Comprehensive suite of integration solutions to link together marine systems and smart home functionality.
- ▶ Use LINK's powerful smartphone app to control your vessel from anywhere in the world.

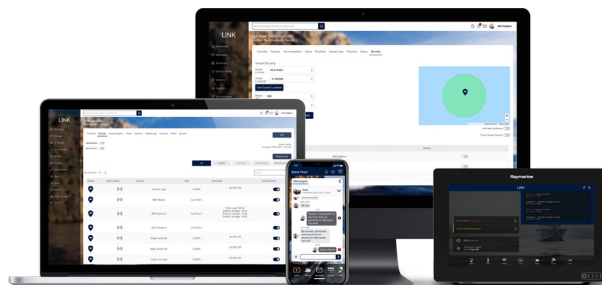


# LINK SECURITY & SUPPORT

- ▶ View up to 10 separate security cameras via the LINK app.
- ▶ Support for professional-grade security systems that can be integrated with LINK alerts and routines.
- ▶ Set a vessel geofence and receive alerts if the boundary is crossed, or set a routine to disable onboard systems.
- ▶ Enable additional users, e.g. crew, boat builders etc., and define what vessel information they can view and control.
- ▶ Easy setup thanks to automatic device discovery.
- ▶ Virtual flight case stores all your documentation in the LINKcloud with user permissions to limit access if required.
- ▶ Enable your boat builder and maintenance team to support you remotely by monitoring issues with onboard devices.
- ▶ Messaging suite allows all vessel users to keep in touch.
- ▶ Access and manage vessel cellular data contracts.

# LINK BRIDGE

- ▶ Crafted from aluminium with a hardened, anodised black outer for extreme strength and durability.
- ▶ Unrivalled connectivity options to utilise the networks and systems already on your vessel.
- ▶ No separate power supply is required.
- ▶ Unique low power mode that can alert you of any knocks or bumps even when the vessel is powered down.
- ▶ Embedded eSIM functions worldwide to transmit your data.
- ▶ Built-in Iridium Satellite transmitter can be used when out of cellular signal range (additional subscription required).
- ▶ LINKbridge functions locally (when onboard) and remotely. A subscription is required for remote functionality.

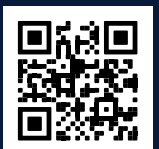


# LINK

For more information or to schedule a demo:

Visit: [www.smartyachts.link](http://www.smartyachts.link)

Email: [info@smartyachts.link](mailto:info@smartyachts.link)



Full Brochure