

F01



Vmoto Soco Group

VMOTO GENE HEADLIGHT


Borned From Italian Design Style





5[⌚]
s

CHANGING TYRE



DOUBLE CALIPERS EXTEND
BRAKE SHOES LIFETIME

3
TIMES MORE.

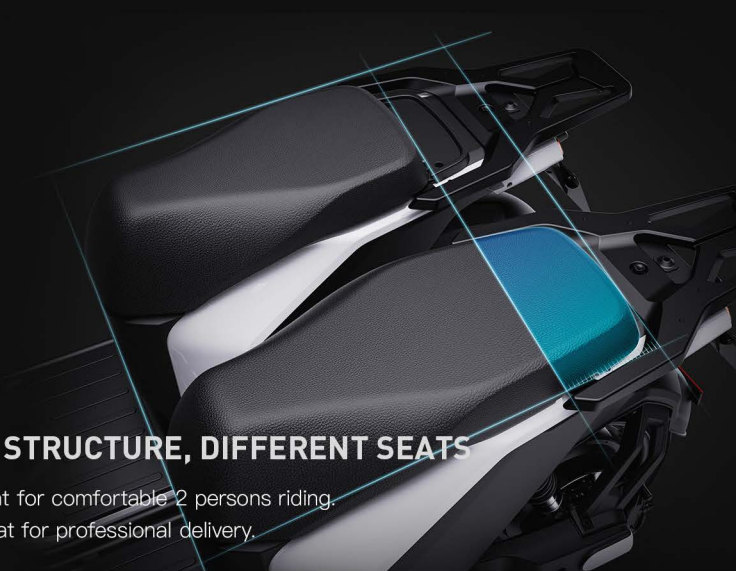




USER FRIENDLY REVERSE FUNCTION

SAME STRUCTURE, DIFFERENT SEATS

Long seat for comfortable 2 persons riding.
Short seat for professional delivery.



UNBREAKABLE FOOT-STEPS, PROTECT THE BODY PARTS.



FORMALIZED BATTERY PACK

Formalized battery pack for multiple Vmoto models, less battery stock needed for operator.

Optional 60V32AH battery pack fit with F01 system.

Optional 60V32AH battery pack can connect with Vmoto Swap station.

High capacity ATL battery with strong power supply guarantee, which let travel up to 90km.

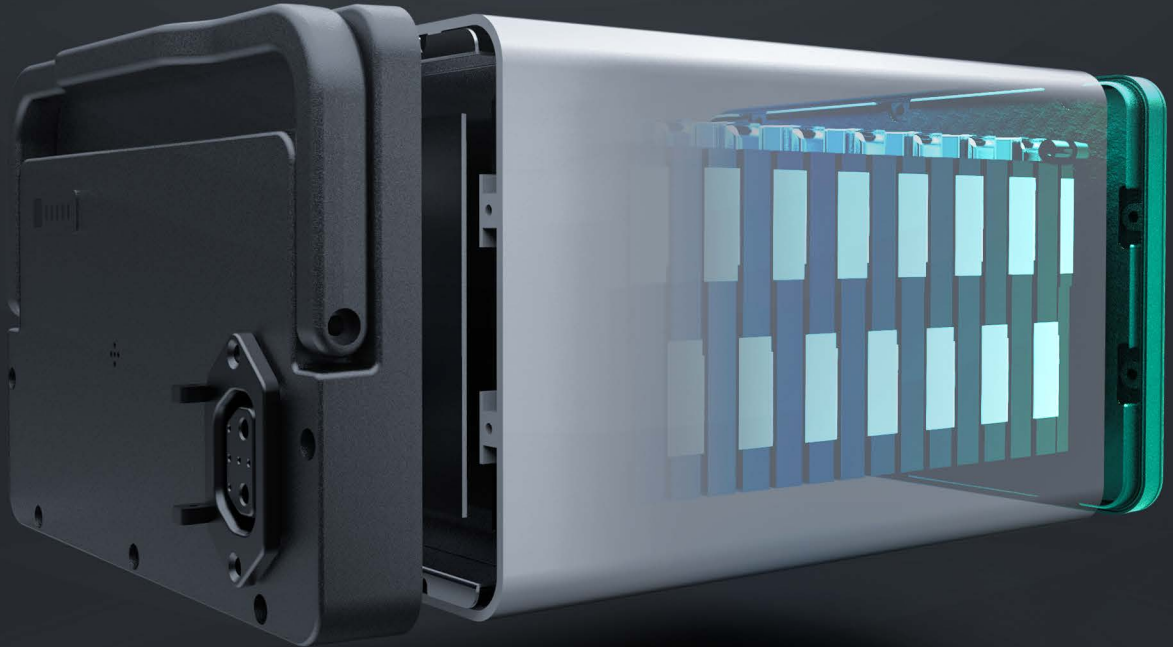
60 v 45 Ah
Battery capacity

3 YEARS
Warranty

1500 +
Number of cycles

3.5 h
Fast charger (optional)

Standard charger is 60V8A.





≡ **5** MINUTES

FOR REPLACING ALL EASY WEAR OUT PARTS

VMOTO SMART PLATFORM

VMOTO 4G APP available, optional to order.
F01 is open to be integrated with 3rd party IOT via CANbus.

A close-up photograph of a microchip mounted on a circuit board. The chip is dark with the VMOTO logo and name printed in white. The background is a blurred circuit board with glowing blue lines and components.

VMOTO











OPTIONAL PARTS



HELMET FOR
SHARING



BATTERY
LOCKER



GPS TRACKING
INSIDE BATTERY



UNBREAKABLE
MOBILE HOLDER



SEAT
SENSOR



BOX FOR
SHARING



NFC



BOX FOR
DELIVERY

SWAP & GO

Swapping Station make you wait 0 minute
to get full power!

Optional for B2B case.



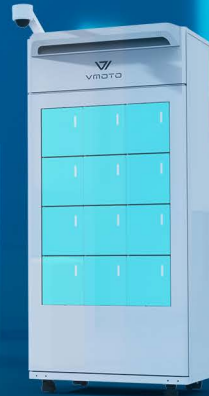
VMOTO CLOUD PLATFORM

Exclusive Solution For Operator & User

Connect all elements of your business, make everything under your control!

SAAS

PAAS



L1e & L3e

Vmoto Soco Group



| | | | |
|---------------------------|---|----------------------|----------------------|
| Length/Width/Height | 1940mm*730mm*1160mm | L1e Max. speed (GPS) | 45km/h |
| Battery Pack | ATL softcore battery | L3e Max. speed (GPS) | 75km/h |
| Battery capacity | 60V45AH | Climb Capacity | ≤14° |
| Standard Charging Current | 6 hour/Optional quick charging 3.5 hour | Wheel base | 1327mm |
| Net Weight | 110KG | Seat Height | 790mm |
| Max. range @ 45km/h | 90km | Rim | Fr1.85-16/ Rr.2.5-14 |

Vmoto Soco Group

Website: www.vmosoco.com

Email: info@vmosoco.com

Facebook: facebook.com/vmosoco

Instagram: instagram.com/vmosoco

LinkedIn: [Vmoto Soco](#)

We are looking for partners globally with a passion for business in B2B sector to come together with Vmoto Fleet, the expert of electric sharing & delivery two-wheel vehicle, to build an incredible business that is like no other in the world. Vmoto Fleet, have one of the longest operating history in electric two-wheel vehicle industry and proven successful products and experience, which will help you to fast track your success in the delivery & sharing operations.