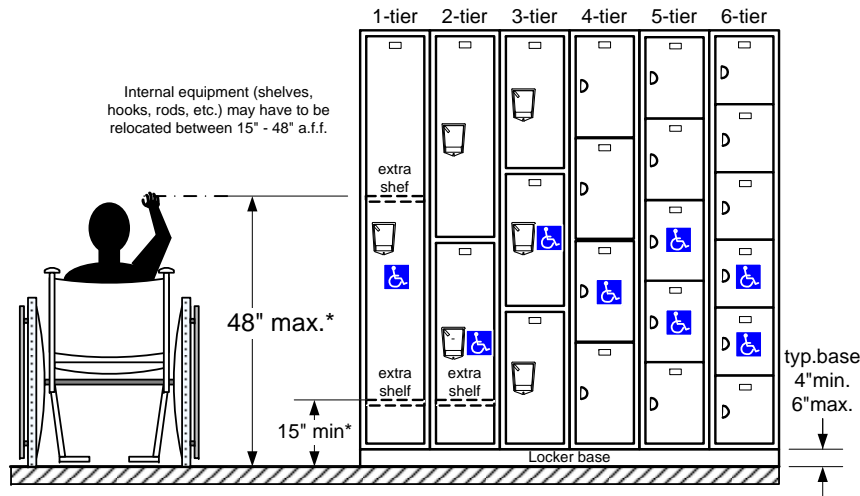


ADA LOCKER COMPLIANCE

The following provides general information to identify which lockers can be made ADA compliant. There are variations and exceptions in specific conditions. Have an Architect confirm your job parameters.

WHICH OPENINGS CAN BE ADA COMPLIANT

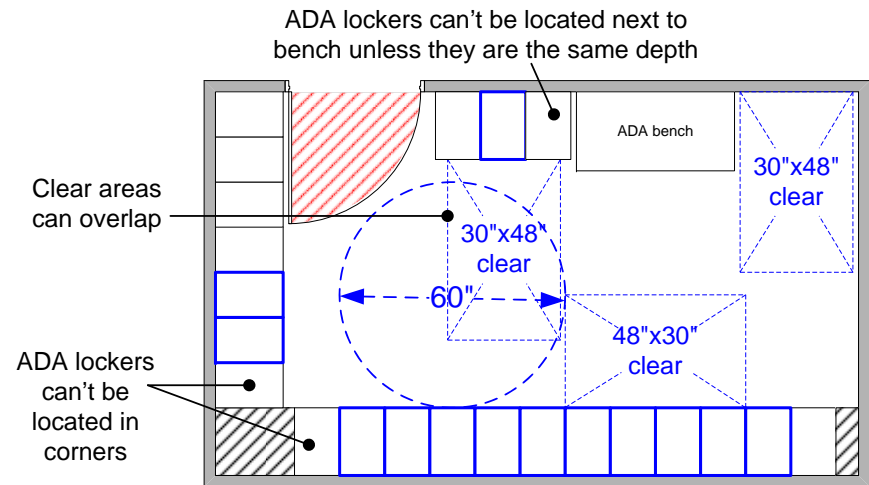
The identified openings can meet general ADA vertical reach ranges. See Figure 1A for reach ranges for children under 13 years of age.



* Different clearances are required for children under 13 years old. See Table for Reach range by age group.

WHERE TO PLACE ADA LOCKERS AND BENCHES

Blue lockers indicate where ADA openings can be located.



Specific Code requirements for LOCKERS

2016 Scope	CBC	Minimum Requirements
Quantity	11B-222	At least 5% (1 ea. min) of each type of opening in each "cluster"
Access	11B-304.3.1	Wheelchair turning space shall be minimum 60" diameter.
Access	11B-305.2/3	30"x48" min. clear floor space (either forward or side approach)
Reach	11B-308.1	Reach ranges for children vary by age range. See Table*
Reach	11B-308.2	General reach ranges for all handles, locks, hooks and shelves shall be 15" min* and 48" max* above finished floor
Operation	11B-309.4	Operable parts shall be operable with one hand and require no tight grasping, pinching or twisting of the wrist. The force required to activate parts shall be no more than 5 pounds of effort.
	11B-803	No additional requirements
Signage	11B-904.3.4	Identification sign must measure at least 4"x4"

Reach range by age group

3-4 yrs.	5-8 yrs.	9-12 yrs.	13+ yrs.
36"max.	40"max.	44"max.	48"max.
20"min.	18"min.	16"min.	15"min.

Specific Code requirements for BENCHES

2016 Scope	CBC	Minimum Requirements
Size	11B-903.3	At least 48" wide with a depth between 20"min. and 24"max.
Back	11B-903.4	Back support to be full width of bench seat and be at least 18"H
Height	11B-903.5	Seat top to be 17"min. and 19"max. above finished floor.
Strength	11B-903.6	Benches to be affixed to floor or wall and must support at least 250 pound load applied either vertically or horizontally.

Job: ADA Lockers and Benches
 Dwg: Accessibility Compliance
 Versn: 1 Date: 10/26/2017
 By: Chris Bruce

© 2017 Copyright includes layout, design, and other intellectual property. The drawings, specifications and other data herein provided shall not be copied, published or otherwise further disseminated without prior written permission of InnerSpace Engineering Corporation.

INNER SPACE
ENGINEERING CORPORATION
 SPACE SAVING & PRODUCTIVITY SOLUTIONS
 WWW.INNERSPACEENGINEERING.COM
 3390-B De La Cruz Blvd. Santa Clara, CA 95054
 PHONE: 408.980.8020 FAX: 408.819.9468