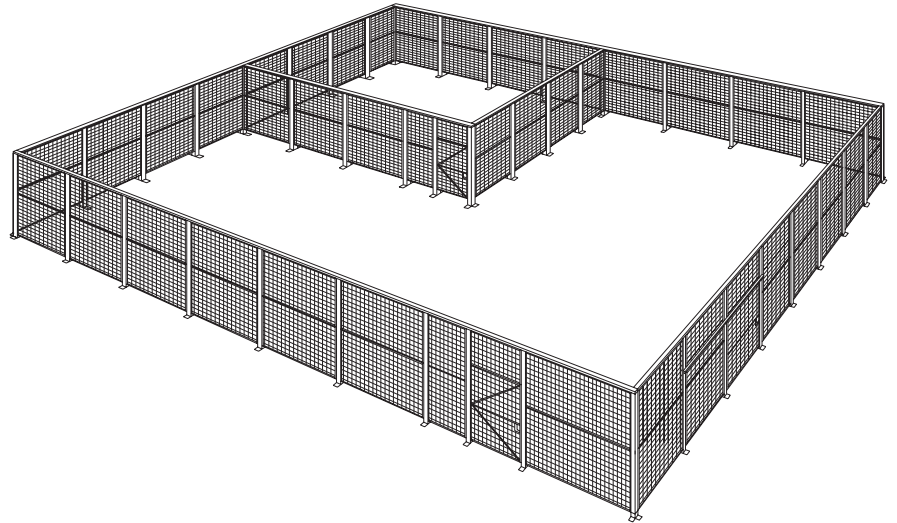


Cal Wire

Wire Mesh Products Since 1948



CAL WIRE Type 202 Construction Welded Wire Industrial Partitions

BENEFITS OF CAL WIRE WELDED WIRE MESH:

Security

Heavy duty 10 gauge welded wire with 2" openings, framed in 1-1/4" x 1-1/4" x 1/8" angle iron.

Flexibility

Stacked horizontal panels secured to steel tube support posts allow for quick and simple installation. Future layout changes are easy with Cal Wire's modular design.

Efficiency

Open wall design provides visual security, while utilizing existing lighting, sprinklers, and HVAC.

Applications For Standard 202:

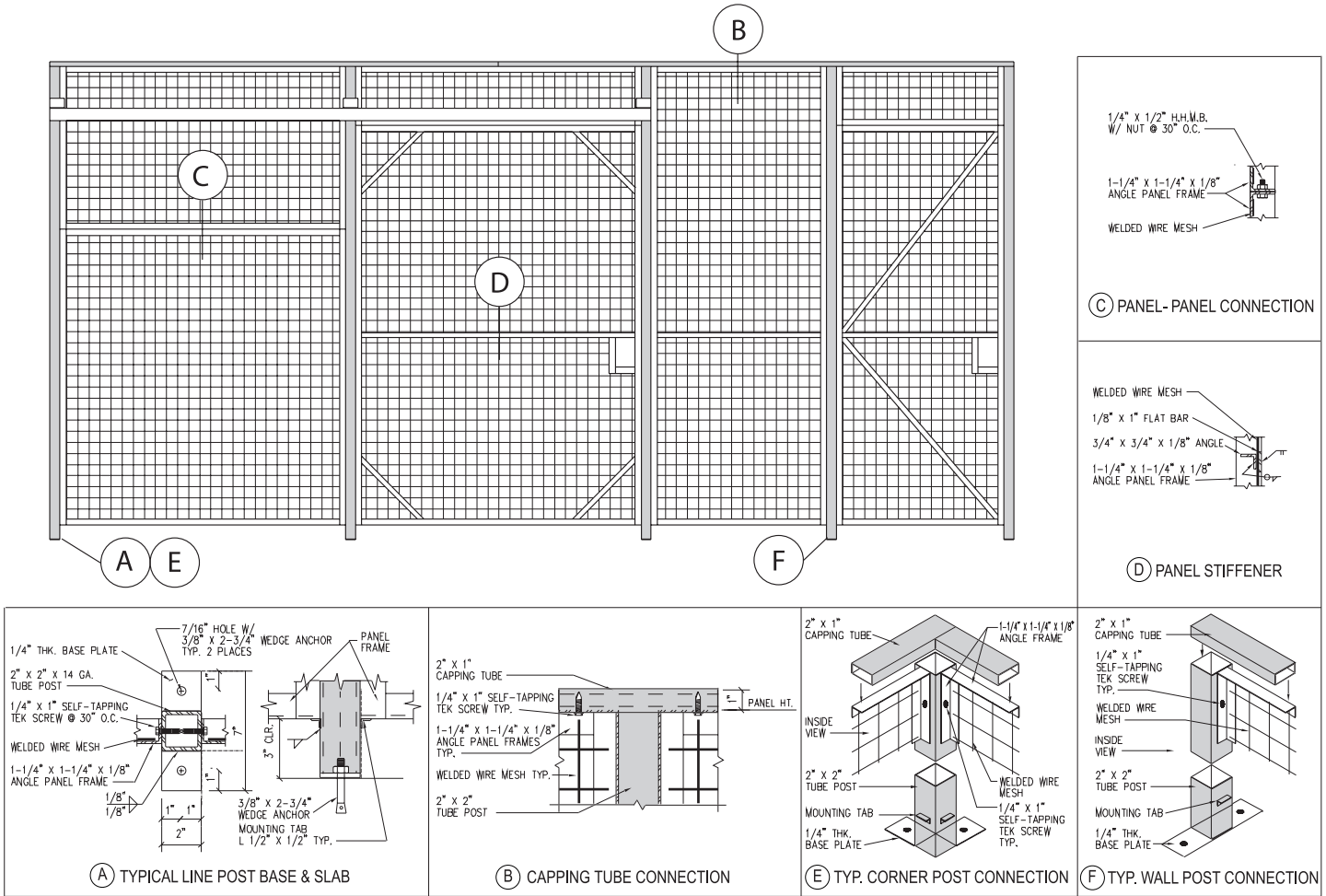
Stock Rooms	Data Centers
Tool Cribs	Colocation Facilities
Machine Rooms	Zoos
Armories	Stairwells
Post Offices	Banks
Prisons	Hospitals

Also Available:

Handrail Infill Panels	Window Guards
Special Finishes	Custom Sizes
Full Height Gates	Ceiling Panels
Double Doors	Headerless Gates
Slide Up Service Windows	Custom Colors



202 SPECIFICATIONS / CONSTRUCTION



WIRE

#10 W&M gauge steel wire welded into 2" square mesh, then welded to angle iron frames.

VERTICAL FRAMES

1-1/4" x 1-1/4" x 1/8" hot rolled angle iron provided with holes for fastening to adjacent panels or tube posts.

HORIZONTAL FRAMES

1-1/4" x 1-1/4" x 1/8" hot rolled angle iron provided with holes for fastening to adjacent panels or tube posts.

CENTER STIFFENERS

1/8" x 1" flat bar on front of panel with one 3/4" x 3/4" x 1/8" angle iron on back side of panel.

PARTITION CAP

2" x 1" x 1/8" steel tubing that secures panel to post connections for greater strength and rigidity.

POSTS

2" x 2" x 14 gauge steel tube support post with 2" x 7" x 1/4" base plate. Posts are available in standard heights of 7 ft. to 12 ft.

CALIFORNIA WIRE PRODUCTS CORP.

1128 West Bradford Circle · Corona, CA 92882
 Ph. (800)486-7730 · Fax (951)735-1070
 e-mail: info@cawire.com · http://www.cawire.com

SLIDING DOORS

All standard sliding gates range from 3 ft. to 10 ft. wide and 7 ft. to 12 ft. high. Mortise Type Lock is standard.

HINGED DOORS

All standard hinged doors are pre-hung and include two 2" x 2" x 14 gauge tube steel posts with a Mortise Type Lock. Available in 3 ft., 4 ft. and 5' widths with transoms. Also, 6' and 8' wide double swing gates.

FINISH

HVLP applied shop coat of Machinery Gray enamel. Standard options include Black, Blue, Tan, and Primer. Custom colors and special finishes available upon request.

HARDWARE

All components are equipped with necessary assembly hardware.

Distributed By:

