

owner:
 K... Investments, LLC
 4830 Vista Drive
 Laramie, WY 82070

drawn by: AEL

checked by: OMR

date: 11-Jun-18

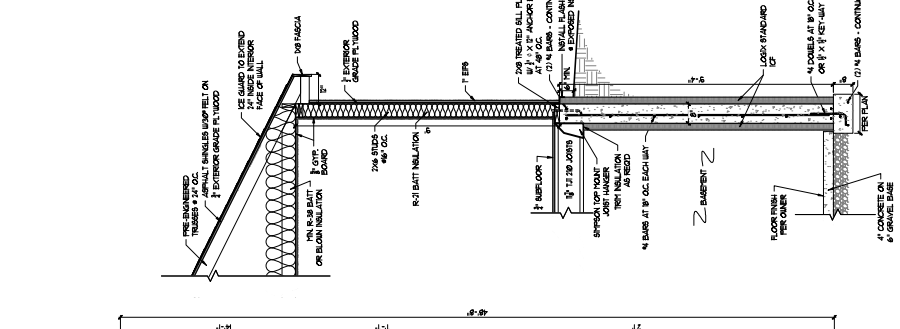
REVISIONS: —

STEAMBOAT RIDGE

TYPE B-B FLOOR PLAN

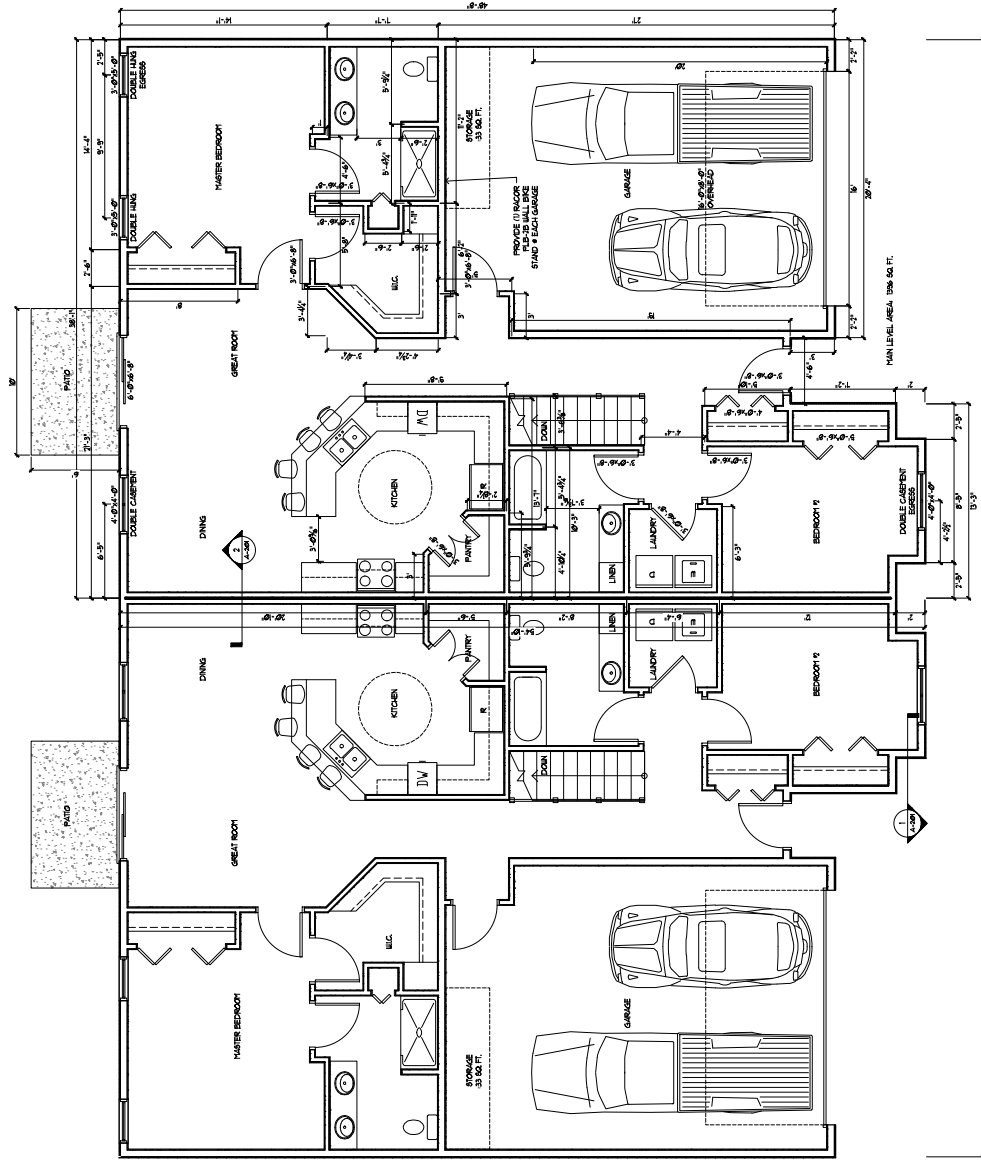
Sheet No. A-201

SPECIFICATIONS:
 ALL WORK SHALL BE IN ACCORDANCE WITH ALL APPLICABLE LOCAL AND STATE CODES AND ALL APPLICABLE NATIONAL AND INTERNATIONAL CODES AND STANDARDS INCLUDING THE 2009 INTERNATIONAL BUILDING CODE, 2009 INTERNATIONAL FIRE CODE, 2009 NATIONAL ELECTRICAL CODE, 2009 INTERNATIONAL CODE, 2009 INTERNATIONAL MECHANICAL CODE, 2009 INTERNATIONAL PLUMBING CODE, 2009 INTERNATIONAL PIPELINES CODE AND THE LARAMIE MUNICIPAL CODE. ALL DIMENSIONS AND CONDITIONS ON DRAWINGS MUST BE CONSIDERED TO APPLY UNLESS OTHERWISE SPECIFIED.
 INSTALL AND CONTRACT ALL WORK IN ACCORDANCE WITH THE MANUFACTURER'S RECOMMENDATIONS AND THE MANUFACTURER'S RECOMMENDATIONS REGARDING ALL COMPONENTS, TUBES, TANKS, VALVES AND PIPEWORK. ALL DIMENSIONS AND CONDITIONS ON DRAWINGS MUST BE CONSIDERED TO APPLY UNLESS OTHERWISE SPECIFIED.
 CONCRETE: All overall length concrete to be at least 4" above and below reinforcement bars.
 REBAR: Reinforcement bars to be 40K Grade steel. Rebar to be 1/2" dia. or larger. Rebar to be placed in accordance with the manufacturer's recommendations. Rebar to be 1/2" dia. or larger unless noted otherwise.
 PRECAST: PRECAST ROOF TRIMMER: This design, fabrication, installation to be in accordance with the manufacturer's recommendations and the manufacturer's specifications. REBAR: REBAR TO BE INSTALLED IN ACCORDANCE WITH THE MANUFACTURER'S RECOMMENDATIONS AND THE MANUFACTURER'S RECOMMENDATIONS REGARDING ALL COMPONENTS, TUBES, TANKS, VALVES AND PIPEWORK. ALL DIMENSIONS AND CONDITIONS ON DRAWINGS MUST BE CONSIDERED TO APPLY UNLESS OTHERWISE SPECIFIED.
 INSULATION: Roof insulation to have a minimum R-value of 48 or 60 psi (psi) roof insulation will having insulation to have a minimum R-value of 21. All rigid insulation to have a minimum R-value of 15.
 FLOOR FINISH: FLOOR FINISH TO BE DETERMINED BY THE ARCHITECT.



2. EXTERIOR PARTY WALL DETAIL

1. FULL WALL SECTION



TYPE B-B FLOOR PLAN

STEAMBOAT RIDGE

TYPE B-B BASEMENT FLOOR PLAN

owner: K...
4830 Vista Drive
Laramie, WY 82070

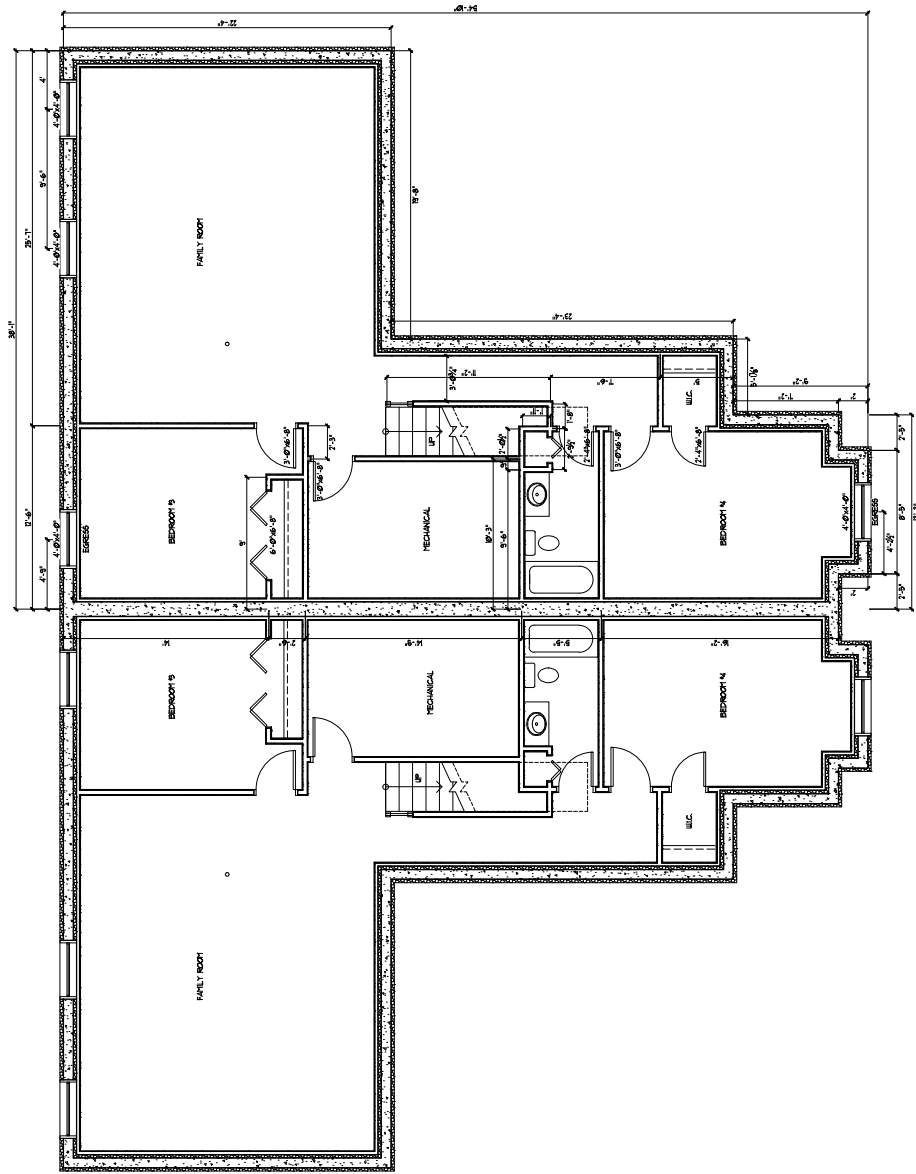
drawn by: AEL

checked by: CMR

date: 11-Jun-16

revisions:

GERTSCHE & BAKER
ENGINEERING & DESIGN INC.
Architects, Engineers
1041 Lark Street • Suite 100 • Laramie, Wyoming • 82001 • phone 307.232.8181 • fax 307.232.4048
gertsbaker.com



TYPE B-B BASEMENT FLOOR PLAN

DATE PLOTTED: 11/16/16 10:58:58 AM PLOTTER: HP DesignJet 2445