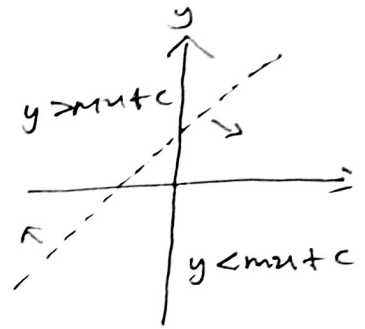
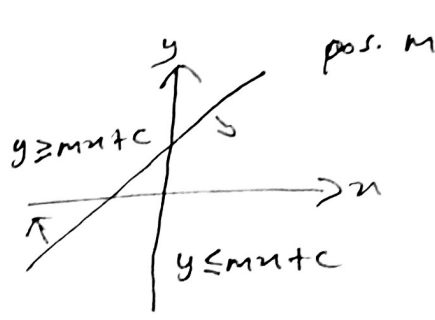
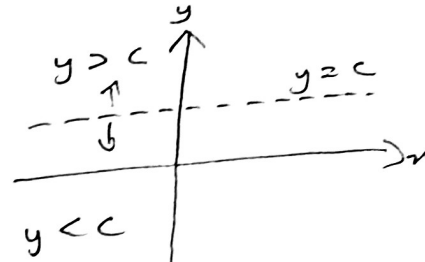
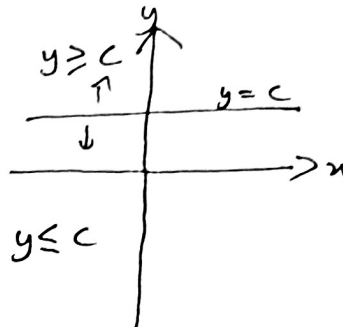


Ketaksamaan Linear dalam 2 Pemboleh Ubah

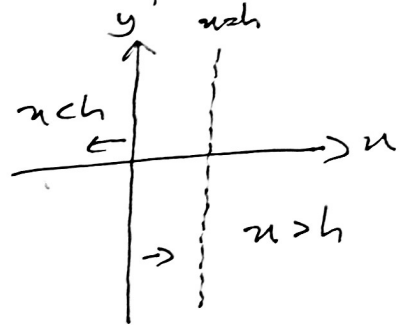
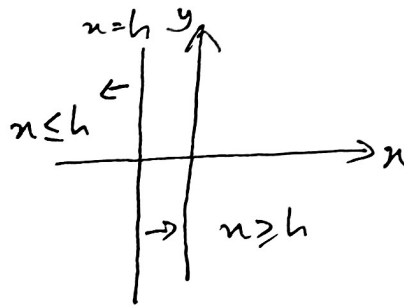
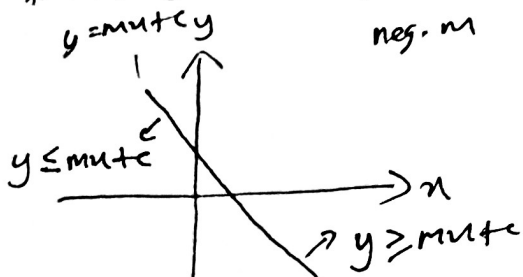
$$\begin{array}{l}
 y < mx + c \\
 y \leq mx + c \\
 y > mx + c \\
 y \geq mx + c
 \end{array}
 \left|
 \begin{array}{l}
 ax + by < c \\
 ax + by \leq c \\
 ax + by > c \\
 ax + by \geq c
 \end{array}
 \right.$$



* Jawapan → Sebutan terendah
 → tanpa no. perpuluhan
 * Selebih-lebihnya (max [\leq])
 Sekurang-kurangnya (min [\geq])



* titik ujian = (0, 0).
 neg. m

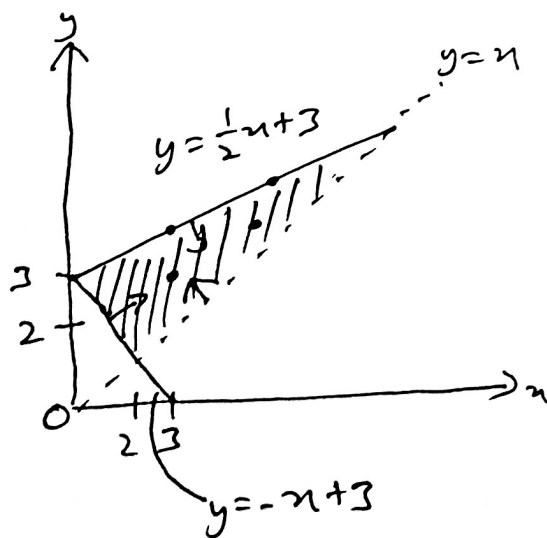


tak lukis?

$x = 0; y = 0$	x	0	$?$
	y	$?$	0

⦿ Sistem Ketaksamaan Linear.

Hati \geq
 * $x < 4 + 2y$
 ↓
 $y > \frac{1}{2}x - 2$



$$\begin{array}{l}
 y \leq \frac{1}{2}x + 3 \\
 y > x \\
 y \geq -x + 3
 \end{array}$$

* koordinat di
 * garis sempang bukan penyelesaian!