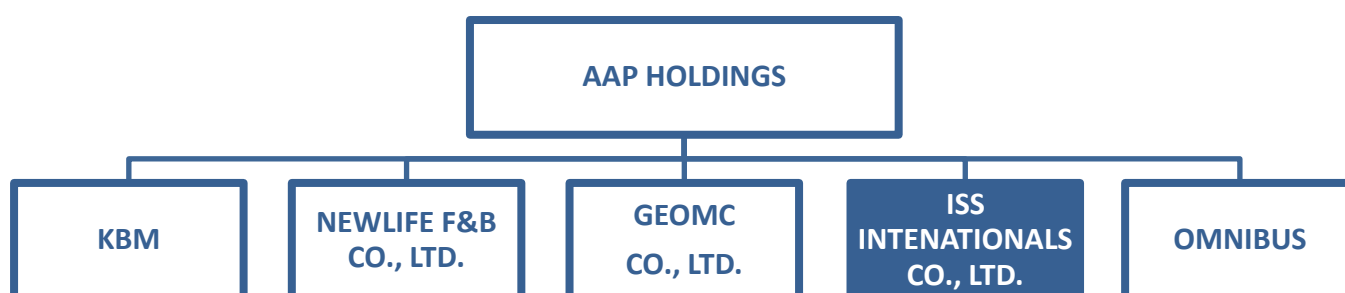


'COVID-19' TEST KIT BUSINESS INTRODUCTION

1. AAP Holdings



- **AAP Holdings**

- Holdings company of KBM, NEWLIFE, GEOMC, OMNIBUS, ISS INTERNATIONALS.
- Professional merger and acquisitions firm.
- Investment in bioscience and energy sector.

- **KBM CO., LTD.**

- Contract manufacturing of beverages
- Trading and distribution business with 80 countries worldwide
- In process of setting up a beverage manufacture in Ho Chi Minh, Vietnam, joint venturing of beverage manufacture 'THC GROUP (TAIWAN)' and 'CHAIMEEI (TAIWAN)'.
- In process of setting up ALOE processing plant with Rajasthan State (India) with total finding of 4.95 million US dollars. This project was aired on the local newspaper and new channel.
- M&A of 'DELLOS F&B' deal worth 2 million US dollars.

- **NEWLIFE F&B CO., LTD.**

- Biggest single manufacturing site in Korea (165,000 SQM)
- 165,000 sqm manufacturing facility and having more than 70 partners globally.
- Korean local partners are LOTTE CHILSUNG, KWANG DONG PHARMACEUTICAL CO., LTD and BINGGRAE who are main players in the Korean beverage market.

- **GEOMC CO., LTD.**

- Contracted distributor of 'MICO BIOMED'.
- Medical device manufacture.
- Main product is the 'MC2 Series' which is a concentration enhancing machine by brain-wave stimulation.
- Other products are 'PainScrambler' which is a pain-relieving machine for pain management.

- **OMNIBUS**

- Contracted distributor of 'BIOSEWOOM'.
- Digital signage advertising company.
- Marketing consultation.

- **ISS INTERNATIONAL CO., LTD.**

- Contracted distributor of 'SHIN JIN MEDICS' and 'YD DIAGNOSTICS'.
- Main managing company for the 'COVID-19 Correspondence' project.
- International trading company dealing with urinal rapid test kits.
- Local Distribution of urinal rapid test kits in The Philippines market by ISS INTEGRATED SOURCING SOLUTIONS CORP. (ISS-PH in short) which is a Philippines local company.
- Clients of 'ISS-PH' were leading pharmacies chains 'WATSON(PH)', 'SOUTH START DRUG' and 'ROSE PHARMACY'.

2. ISS Internationals CO., LTD.

- Head managing and trading company for 'COVID-19' Correspondence Project.
- ISS Internationals Co., LTD. (ISS in short) is under 'AAP Holdings' umbrella is specialized in trading and has been distributing urinal rapid kits in The Philippines for more than 3 years.
- 'ISS' knowledge, experience in the rapid test kits and in trading, 'ISS' was selected to lead and manage the 'COVID-19' Correspondence Project.
- Below are the products that 'ISS' has been distributing in The Philippines market. (For more detail please refer to the 'BIOTEST Introduction'.)



3. COVID-19 Detection Kits

● Overall

Manufacture	Detection Type	Detection Method	Accuracy	Test Time	Production Capacity	REMARKS
BIOSEWOOM	PCR	Real-Time	≥98%	1h 50 mins	1,000 Kits/ Weekly	Using Real-Time equipment
SHIN JIN MEDICS	PCR	Real-Time	≥98%	1h 45 mins	1,000 Kits/ Weekly	Using Real-Time equipment
YD DIAGNOSTICS	PCR	Real-Time	≥98%	2h 30 mins	1,000 Kits/ Weekly	Using Real-Time equipment
MICO BIOMED	PCR	Open	≥98%	35 mins	1 Million Tester/ Weekly	Using Real-Time equipment
	PCR	Closed	≥98%	35 mins	1 Million Tester/ Weekly	Using dedicated diagnostic machine
SHIN JIN MEDICS	POC	Open	≥98%	15 mins	150,000 Tests/ Weekly	Normal antibody double testing
NANOENTEK	POC	Closed	≥98%	3 mins	120,000 Test/ Weekly	Using dedicated diagnostic machine

● BIOSEWOOM

- Real-Q 2019-nCoV Detection Kit is an in vitro diagnostic medical device that qualitatively detects the COVID-19 gene in samples (sputum, oropharyngeal and nasopharyngeal specimens etc.) of patients with suspected respiratory infections using 1-step real-time RT-PCR (Reverse transcription polymerase chain reaction) system.
- It used the TaqMan probe for detection of COVID-19 RdRp gene and E gene and also IC TaqMan probe for amplification of human RNase P as internal control. The internal control can be used to check for nucleic acid isolation and possible PCR inhibition.
- Comparably late start in the COVID-19 detection kit market which means delivery lead time is much shorter than other competitors.

● SHIN JIN MEDICS

- Capable of supplying both PCR and Rapid Test Kits.
- Shin Jin Medics Inc. researches, develops, manufactures, and supplies immunodiagnostic products.
- Product category varies from Radio to Enzyme Immunoassay product as well instruments related in the field.
- Mostly known for its ability in the detection kit sector in Korea. Current Public Prosecutors' Office official contract for Drug rapid kits.
- With their technology SHIN JIN MEDICS obtain very trustworthy clinical result by highest sampling tests. Also tested higher in performance when comparing to its competitors in Korea.
- Comparably late start in the COVID-19 detection kit market which means delivery lead time is much shorter than other competitors.

- **YD DIAGNOSTICS**

- Long history, established in 1966 as an IVD manufacturer.
- Has been developing IVD products that have great demand such as diabetes products, immunodiagnosics, molecular biology product stand analyzers.
- Professional in Urinal test kits having market share 68% in Korea.
- Comparably high accuracy compared to other competitors in the Korea market.

- **MiCo BioMed**

- High sensitivity (LoD) and specificity
- High accuracy using two target primer and probe sets (N and ORF genes)
- Having detection solution for both open (market recognized Real-Time device) and closed (self-designed Real-Time device) which can serve both needs for PCR testings.

- **NANOENTEK**

- Serological approach test, distinguishing NANOENTECK from normal PCR and Rapid Tests.
- Serological test is required to check presence of immune response to SARS-CoV-2.
- Useful source to distinguish symptomatic and asymptomatic patients.
- Centers for Disease Control and Prevention is also developing its own serological testing IgG and IgM.
- The equipment needed for this test kit is very portable and very light so very useful for 'Drive-Thru Testing Center Solutions' application or any on-site COVID-19 screening centers. For example, airport immigrations, shopping mall and commercial buidings.

- For more details of our proposed products please refer to the product introduction materials attached separately.