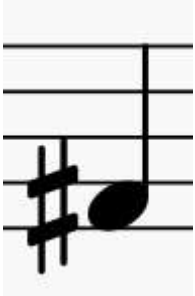


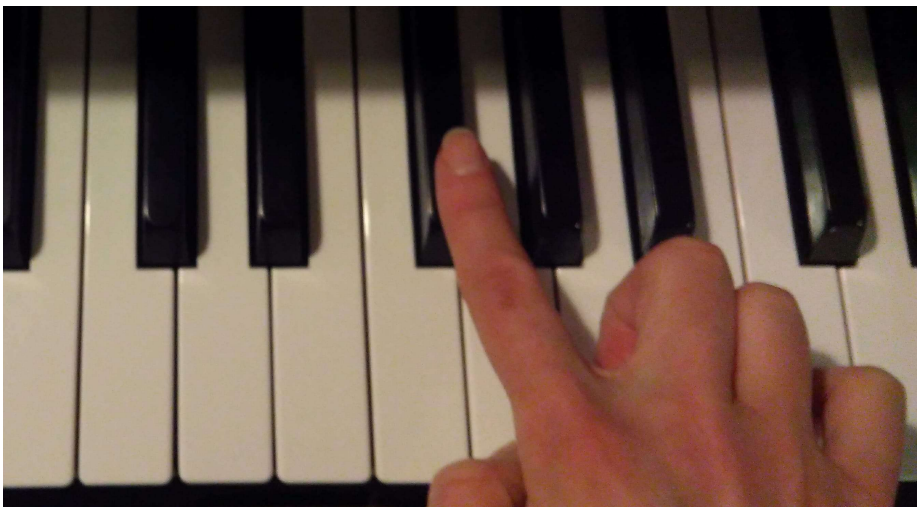
Accidentals

Accidentals are sharps (#), flats (b) and naturals (♮). They indicate that a note is different to how we expect based on the key signature.

If we sharpen a note like this:



Rather than playing the note normally (here an F), we play the note a semitone higher. A semitone is the smallest step we can take on the piano. This will either be from a white note up to the adjacent (on the right) black note, or from a white note to the adjacent (on the left) white note if there is no black note between.

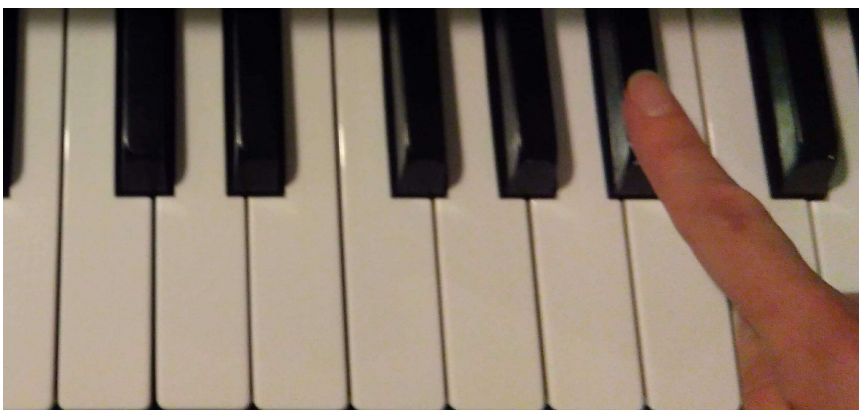


F#

If we flatten a note like this:



Rather than playing the note normally (here a B), we play the note a semitone lower. This will either be from a white note down to the adjacent (on the left) black note, or from a white note to the adjacent (on the left) white note if there is no black note between.



Bb