



Differential medial temporal lobe and default-mode network functional connectivity and morphometric changes in Alzheimer's disease

Kamil A. Grajski^{a,*}, Steven L. Bressler^b, for the Alzheimer's Disease Neuroimaging Initiative¹

^a NuroSci, LLC., West Palm Beach, FL 33401, USA

^b Center for Complex Systems and Brain Science, Florida Atlantic University, Boca Raton, FL 33431, USA

ARTICLE INFO

Keywords:

Hippocampus
Medial temporal lobe
Hyperconnectivity
Hypoconnectivity

ABSTRACT

We report group level differential detection of medial temporal lobe resting-state functional connectivity disruption and morphometric changes in the transition from cognitively normal to early mild cognitive impairment in an age-, education- and gender-matched 105 subjects Alzheimer's Disease Neuroimaging Initiative dataset. In mild Alzheimer's Disease, but not early mild cognitive impairment, characteristic brain atrophy was detected in FreeSurfer estimates of subcortical and hippocampal subfield volumes and cortical thinning. By contrast, functional connectivity analysis detected earlier significant changes. In early mild cognitive impairment these changes involved medial temporal lobe regions of transentorhinal, perirhinal and entorhinal cortices (associated with the earliest stages of neurofibrillary changes in Alzheimer's Disease), hippocampus, parahippocampal gyrus and temporal pole, and cortical regions comprising or co-activated with the default-mode network, including rostral and medial prefrontal cortex, anterior cingulate cortex, precuneus and inferior temporal cortex. Key findings include: a) focal, bilaterally symmetric spatial organization of affected medial temporal lobe regions; b) mutual hyperconnectivity involving ventral medial temporal lobe structures (temporal pole, uncus); c) dorsal medial temporal lobe hypoconnectivity with anterior and posterior midline default-mode network nodes; and d) a complex pattern of transient and persistent changes in hypo- and hyper-connectivity across Alzheimer's Disease stages. These findings position medial temporal lobe resting state functional connectivity as a candidate biomarker of an Alzheimer's Disease pathophysiological cascade, potentially in advance of clinical biomarkers, and coincident with biomarkers of the earliest stages of Alzheimer's neuropathology.

1. Introduction

In late-onset Alzheimer's Disease, neuropathologies may cumulate for decades before possible though not inevitable clinical manifestation. Diagnostic guidelines (Albert, 2011; Jack, 2011; Jack et al., 2011; McKhann et al., 2011; Sperling et al., 2011) and a research framework (Jack et al., 2018) for cognitively normal (CN), mild cognitive impairment (MCI), and Alzheimer's Disease individuals, consider multiple neuroimaging modalities including amyloid β and tau tracers, markers

of metabolic activity (FDG PET), and morphometry (MRI). An hypothesized Alzheimer's Disease pathophysiological cascade links these neuroimaging modalities together with cerebrospinal fluid (CSF) markers for amyloid β and tau to the Alzheimer's Disease clinical progression (Jones et al., 2011; Jack et al., 2013).

The hypothesis tested in this investigation was that functional connectivity disruption involving MTL can be detected in the EMCI group. Disruption of functional connectivity in Alzheimer's Disease has been observed in the default-mode network and other resting-state

Abbreviations: ADNI, Alzheimer's Disease Neuroimaging Initiative; CA, cornu ammonis; CDR, clinical dementia rating; CDRSB, clinical dementia rating, sum of boxes; CDT, cluster determination threshold; CN, cognitively normal; CSF, cerebrospinal fluid; D, dementia; DMN, default-mode network; EMCI, early mild cognitive impairment; EPI, echo-planar image; FWHM, full width half maximum; ICA, independent components analysis; ICV, intra-cranial volume; LMCI, mild cognitive impairment; late MCI, mild cognitive impairment; MMSE, mini-mental state examination; MTL, medial temporal lobe; PCC, posterior cingulate cortex; PHG, parahippocampal gyrus; rsfMRI, resting-state functional MRI; ROI, region of interest; SMC, significant memory concern

* Corresponding author at: NuroSci, LLC., 525 South Flagler Drive, Suite 21CD, West Palm Beach, FL 33401, USA.

E-mail address: kgrajski@nurosci.com (K.A. Grajski).

¹ Data used in preparation of this article were obtained from the Alzheimer's Disease Neuroimaging Initiative (ADNI) database (adni.loni.usc.edu). As such, the investigators within the ADNI contributed to the design and implementation of ADNI and/or provided data but did not participate in analysis or writing of this report. A complete listing of ADNI investigators can be found at: http://adni.loni.usc.edu/wp-content/uploads/how_to_apply/ADNI_Acknowledgement_List.pdf.

<https://doi.org/10.1016/j.nicl.2019.101860>

Received 15 February 2018; Received in revised form 6 May 2019; Accepted 11 May 2019

Available online 18 May 2019

2213-1582/ © 2019 The Authors. Published by Elsevier Inc. This is an open access article under the CC BY-NC-ND license

(<http://creativecommons.org/licenses/by-nc-nd/4.0/>).

networks in resting-state functional MRI (rsfMRI) (Greicius et al., 2004; Buckner et al., 2005; Sorg et al., 2007; Sperling et al., 2010; Zhou et al., 2010; Jones et al., 2011; Jones et al., 2012, 2016; Brier et al., 2012; Sheline and Raichle, 2013; Ward et al., 2014; Cai et al., 2015; Dillen et al., 2017). However, such observations have not broadly impacted clinical practice (Woo et al., 2017).

The purpose of the present study is thus to determine the progression across Alzheimer's Disease stages of changes in functional biomarkers using functional connectivity analysis of resting-state fMRI that specifically involve medial temporal lobe (MTL). Concurrently, structural imaging analysis provides an important control for and forms the basis for a differential comparison of structural and rsfMRI functional connectivity analysis. The experimental design is a group-level analysis of an Alzheimer's Disease Neuroimaging Initiative (ADNI) population containing clinically-defined cognitively normal, EMCI and mild Alzheimer's dementia subgroups. We observed subcortical volume loss, whole hippocampal and hippocampal subfield volume loss, and cortical thinning in the mild Alzheimer's Disease subgroup, but not in the EMCI group. A group-level pairwise region of interest (ROI) analysis was used to assess functional connectivity changes. *A priori*, the first element in each ROI pair (the "anchor ROI") was in the medial temporal lobe (MTL) identified by a method described below. The reason to anchor each ROI pair in the MTL was that it is in the MTL perirhinal cortex (Brodmann Areas 35 and 36) and, specifically, the transentorhinal region (Brodmann Area 35) that the neurofibrillary changes associated with Alzheimer's Disease start and then, in a progression with disease stages, appear in entorhinal cortex (Brodmann Area 28), hippocampus and temporal cortex, association cortices, and ultimately primary sensory cortices (Braak and Braak, 1985, 1991). The ROI position of the second element in each identified ROI pair was determined in a data-driven method described below. The combination of *a priori* and data-driven approach directly linked functional connectivity analysis to focal regions of earliest neuropathology in Alzheimer's Disease.

We report evidence that functional connectivity changes involving MTL occur in the CN to EMCI transition in the absence of structural imaging findings. The progression of observed CN to EMCI functional connectivity changes was further evaluated by comparing the mild Alzheimer's Disease and CN groups. We conclude that rsfMRI functional connectivity analysis of MTL may provide a complementary approach to established neuroimaging and other biomarkers within a model of Alzheimer's Disease pathophysiology (Jack et al., 2013) and an Alzheimer's Disease research framework (Jack et al., 2018).

2. Materials and methods

Data used in the preparation of this report were obtained from the Alzheimer's Disease Neuroimaging Initiative (ADNI) database (adni.loni.usc.edu). The ADNI project was launched in 2003 as a public-private partnership, led by Principal Investigator Michael Weiner, MD. The primary goal of ADNI has been to test whether serial magnetic resonance imaging, positron emission tomography, other biological markers, and clinical and neuropsychological assessment can be combined to measure the progression of mild cognitive impairment and early Alzheimer's Disease.

2.1. Participants

The participants in this report were a subset of the ADNI 2 experimental sub-study on resting state fMRI functional connectivity (rsfMRI) (Jack et al., 2008; Weiner et al., 2015). The ADNI 2 rsfMRI studies available for download on the Laboratory of Neuro Imaging (LONI) website in September 2016 consisted of 886 scan pairs (structural MRI, rsfMRI) from 220 participants. We subjected scans to a rigorous multistage preprocessing and quality assurance procedure described in further detail below and summarized in Supplemental Fig. 1. The procedure yielded a 105 participants cross-sectional study dataset.

Table 1

Study participant demographics and metadata.

	CN n = 32	EMCI n = 39	Mild AD n = 34	P value
Age (Mean, SD)	74.2 (5.5)	72.5 (6.8)	73.4 (7.2)	0.56 ^b
Female (n, %)	18 (56)	22 (56)	13 (38)	0.22 ^a
Education (Mean, SD)	16 (2.2)	16 (2.5)	17 (2.6)	0.95 ^b
CDR (Median, Min, Max)	0 (0, 0)	0.5 (0.5, 0.5)	0.5 (0.5, 1.0)	< 0.001 ^b
CDR-SB (Median, Min, Max)	0 (0, 0)	1.0 (0.5, 3.0)	2.5 (0.5, 7.0)	< 0.001 ^b
MMSE (Median, Min, Max)	29.5 (27, 30)	29 (27, 30)	25 (20, 26)	< 0.001 ^b
APOEε4 = 2 (n, %)	1 (3)	4 (10)	9 (26)	0.007 ^a

AD = Alzheimer's Disease; CDR = clinical dementia rating; CDR-SB = clinical dementia rating sum-of-boxes; CN = cognitively normal; EMCI = early mild cognitive impairment; MMSE = mini-mental state examination; SD = standard deviation.

^a Chi-square test.

^b ANOVA.

Table 1 summarizes participant demographics and metadata. ADNI 2 protocols (publicly available on the adni.loni.usc.edu website) included a clinical designation of significant memory concern (SMC) and sub-division of MCI into EMCI and LMCI. The present analysis pooled and automatically filtered the SMC and MCI groups. An automatic approach was indicated given that: a) ADNI 2 follow-up visit diagnostic entries did not sub-divide MCI and did not include SMC; and b) usable rsfMRI images were obtained in the range of 0–36 months post baseline. By filtering on Clinical Dementia Rating (CDR), Clinical Dementia Rating Sum-of-Boxes (CDR-SB), and Mini-Mental State Examination (MMSE), we automatically assigned each participant to one of three clinical categories: CN; EMCI; and mild Alzheimer's Disease. The cutoff values were motivated by the ADNI 2 protocol and others (O'Bryant et al. (2008); Brier et al. (2012)). The assignments were generated and fixed *prior* to conducting the statistical analysis reported below. The resultant EMCI labelled group includes *at baseline* SMC, EMCI and LMCI participants. The mild Alzheimer's Disease groups includes *at baseline* EMCI and LMCI participants. The three clinical groups (CN, EMCI, mild Alzheimer's Disease) were balanced for age ($P = 0.56$), education ($P = 0.95$) and gender ($P = 0.22$). Participant ethnicity was 97% ($N = 101$) "Not Hispanic or Latino"; 3% ($N = 3$) were "Hispanic or Latino" (all in the CN clinical category); and 1% ($N = 1$) was "Unknown". The effect of clinical group was significant for Clinical Dementia Rating (CDR) ($P < 0.001$), Clinical Dementia Rating Sum-of-Boxes (CDR-SB) ($P < 0.001$), Mini-Mental State Examination (MMSE) ($P < 0.001$), and APOEε4 ($P = 0.007$).

2.2. Image acquisition

The present analysis focuses on two of the up to eight scans obtained during a typical ADNI 2 subject visit. These are the high-resolution T₁-weighted 3D whole brain structural scan (Scan #2 in the protocol) and the resting state functional scan (Scan #4 in the protocol). Structural and rsfMRI scans were acquired with 3 T MRI scanners of a single manufacturer (Philips Medical Systems: Achieva, Ingenia, Ingenuity, Intera) from 14 unique sites in two configurations (MULTI-COIL; SENSE-HEAD), and fifteen (15) different software versions (3.2.1 or higher). Structural scans were acquired with a T₁-weighted sagittal magnetization-prepared rapid gradient echo (MP-RAGE) sequence, with 1.2 mm right/left, 1.0 mm anterior/posterior and 1.0 mm superior/inferior resolution. RsfMRI scans were acquired with a T₂-weighted gradient echo planar imaging sequence with repetition time/echo time, 3000/30, flip angle, 80°, 48 axial slices, and 64 × 64 in-plane matrix yielding an isotropic 3.3 mm voxel size. Phase-directions varied: anterior-posterior, $N = 16$; posterior-anterior, $N = 86$; missing values = 4.

Only two temporal slice order sequences were included in this study dataset: a) ascending 48 planes (odd, even), $N = 98$; and b) descending 48 planes (even, odd), $N = 7$. rsfMRI scans were of two durations: a) 140 TRs (“resting state”, $N = 91$); and b) 200 TRs (“extended resting state”, $N = 14$). Additional image acquisition protocol details can be found on the public adni.loni.usc.edu website.

2.3. Image processing

Structural images and rsfMRI images were downloaded from LONI either in DICOM format (and locally converted using `dcm2nii`) or in 4DNIFTI format (DICOM to NIFTI conversion performed by LONI). Preprocessing and data analysis were performed using a combination of FreeSurfer (Dale et al., 1999), Analysis of Functional Neuroimages (AFNI) (Cox, 1996), and “home-grown” analysis implemented in R and `tsh` shell scripts. The AFNI Version was AFNI_17.1.03 (2-May-2017). The FreeSurfer version was V6.0 run in the Amazon Cloud on Ubuntu 14.04. The R version was Version 3.4.3 (30-Nov-2017). The AFNI Python script `uber_subject.py` was used to generate a preprocessing shell script which was manually edited.

2.4. Structural image analysis with FreeSurfer 6.0

Subcortical and hippocampal subfield segmentation, and cortical parcellation (surface area, thickness and volume) were obtained with FreeSurfer Version 6.0 image analysis suite, which is documented and freely available for download online (<http://surfer.nmr.mgh.harvard.edu/>) (Dale et al., 1999; Iglesias et al., 2015). FreeSurfer default settings were applied via the “recon-all” command.

2.5. Functional MRI analysis with AFNI

The rsfMRI echo-planar image (EPI) preprocessing sequence consisted of the following steps using AFNI: a) alignment of EPI centers to a standard atlas (MNI_avg152T1); b) elimination of the first ten (10) EPIs; c) outlier detection and de-spiking; d) application of time-shift correction; e) alignment to the least motion distorted volume; f) alignment to the anatomical image and warp to a standard space (MNI_avg152T1); g) generation of anatomical and EPI masks; h) application of spatial smoothing (FWHM = 4.0 mm); i) scaling voxel time series to a mean of 100; j) generation of demeaned motion parameters and motion parameter derivatives; k) generation of motion “censor” masks (motion limit = 0.3); l) generation of ventricle (Vent) and white-matter (We) segmentation masks from FreeSurfer segmentation and parcellation results; and m) deconvolution with 12 regressors (6 regressors + 6 motion derivatives). The process yielded a 4D residual error volume that served as input to the next stage of volumetric and correlation analysis. Global signal regression (GSR) was not performed. Bandpass filtering was performed in the final ROI pairwise analysis stage as discussed below.

Table 2 lists pre-processing stage group-level statistical summaries obtained from AFNI `@ss_review.basic`. There were no significant differences between groups for average censored motion, maximum censored motion and the average fraction of TR frames censored for excess motion. Group average temporal signal-to-noise values were in excess of 170 with standard deviation in the range 16–19, indicating good overall input EPI signal levels. The values did not differ significantly across groups. Finally, the group average Dice coefficient, which measures the extent of overlap between the anatomical and EPI brain masks, was in excess of 0.88 with standard deviation in the range, 0.012–0.015, indicating good overall anatomical – EPI alignment. The values did not differ significantly across groups.

2.6. Image quality assurance

The rationale for the image quality assurance procedure was two-

Table 2

Group-average pre-processing statistics.

	CN $n = 32$	EMCI $n = 39$	Mild AD $n = 34$	P value ^a
Avg. Censored Motion (Mean, SD)	0.095 (0.02)	0.091 (0.02)	0.091 (0.02)	0.63
Max. Censored Motion (Mean, SD)	0.473 (0.11)	0.508 (0.13)	0.506 (0.14)	0.46
Censor Fraction (Mean, SD)	0.09 (0.06)	0.08 (0.06)	0.10 (0.07)	0.56
Avg. TSNR (Mean, SD)	179 (16)	178 (19)	180 (16)	0.85
Global Correlation (Mean, SD)	0.022 (0.01)	0.022 (0.01)	0.023 (0.01)	0.91
Dice Coefficient (Mean, SD)	0.888 (0.01)	0.891 (0.02)	0.890 (0.01)	0.69

AD = Alzheimer's Disease; CDR = clinical dementia rating; CDR-SB = clinical dementia rating sum-of-boxes, CN = cognitively normal; EMCI = early mild cognitive impairment; SD = standard deviation; TSNR = temporal signal-to-noise.

^a ANOVA.

fold. First, to establish an automatic, reproducible and quantitative approach for acceptance of participants' images into the present analysis. Second, to control for motion and other artefacts (e.g., image acquisition details) that could confound resting state functional connectivity analysis. The initial database consisted of 886 rsfMRI scans (and their paired structural images) from 220 subjects. An R package “ADNIMERGE” contained MRI and rsfMRI quality assessments (e.g., comments by ADNI quality reviewers) and related data (e.g., rsfMRI slice order) stored in the tables “mayoadirl_mri_imageqc” and “mayoadirl_mri_fmri”, respectively. The 886-scan set was reduced to 673 scans ($n = 196$) by rejecting all scans that did not conform to the slice order sequences listed above, or failed visual inspection in the FSL viewer, or contained any reviewer comment in either of the available pair of comment fields. Comments typically referenced motion or clinical findings.

The rsfMRI EPI preprocessing sequence, with motion-limit set to 0.3, was applied to each of the 673 structural-rsfMRI pairs. The global signal was analyzed as an initial screen for excessive motion. Scans were rejected if the global average time-series amplitude value fell outside the range 96–104 or if the standard deviation of the global average time series exceeded 2.0. This gross motion screening procedure reduced the analysis database to 507 structural-rsfMRI pairs ($n = 190$ subjects).

The 507 scan pairs database was further screened using statistics generated by the AFNI-based preprocessing pipeline. Scans were marked for rejection according to the following criteria: a) DICE coefficient < 0.78; b) censor fraction > 0.21; c) maximum censored displacement > 1.00; d) average TSNR > 400 or average TSNR < 100; e) degrees of freedom left < 100; and f) global correlation < 0.10. Threshold values were individually heuristically established for each test. For example, the degrees of freedom requirement and censor fraction tests assured that images with multiple short censored temporal segments or single extended temporal segments were rejected. The DICE coefficient value threshold represented a “knee” in the distribution of DICE coefficient values. 206 scan pairs from 106 subjects met these quality assurance criteria. Where multiple candidate scan pairs were present for a given subject, the latest available pair was selected. 80% of the final dataset consisted of scans obtained from subjects who were on at least their second ADNI 2 study visit. The final study database consisted of 105 structural-functional scan pairs from 105 subjects. ANOVA confirmed that preprocessing quality measures were matchhead across the three diagnostic groups. See Table 2.

2.7. ROI seed and ROI pairs of interest identification

ROI seeds for ROI pairwise functional connectivity analysis were

identified by an hybrid *a priori data-driven* method. The procedure was applied independently in left and right hemispheres. To bootstrap the ROI seed selection procedure, FreeSurfer subcortical segmentations were used to define the global 3D bounding box for the hippocampus and MTL. A grid of 6 mm-spaced coordinates within the bounding box formed the input candidate ROI seed pool. Input candidate seeds were retained subject to the conditions that the mask for a 6 mm radius spatial sample (33 voxels) centered on the ROI seed was 100% contained within the global anatomical brain mask, and not > 50% overlap with either of the global ventricle or global white matter masks obtained during pre-processing. The qualifying set of 6 mm radius input ROI masks were summed (AFNI *3dMask*) and visually inspected (Supplemental Fig. 2). For each subject and for each input ROI mask, the average time series was computed and retained using AFNI *3dmaskave*.

To obtain candidate ROI pairs for analysis, we performed for each input candidate ROI the following group-level procedure. First, the average time series computed and stored in the preceding step, was used to compute the Fisher z-transformed Pearson correlation coefficient with every other voxel in the subject 4D image (AFNI *3dfim+*). Computation was restricted to those voxels contained within the global brain mask generated during AFNI baseline processing). Second, a group-level, one-way, three-factor (CN, MCI, Dementia) 3D ANOVA (AFNI *3dAnova*) was conducted and the 3D volume of F statistics was retained. Third, a 3D cluster analysis (AFNI *3dclust*) was performed on the F statistic 3D volume and for each qualifying cluster a candidate ROI mask of a 6 mm spatial sample located at the cluster center of mass was retained. Qualifying clusters were those with threshold F-statistic ($F \geq 3.086$; $p \leq .05$, uncorrected) and minimum cluster size ($N_c = 20$). These parameters were permissive by design. Fourth, only those candidate ROIs were retained for which the mask was 100% contained within the global brain mask (not including the brainstem and cerebellum) and did not have > 50% overlap with either the global ventricle or global white matter masks. Fifth, qualifying candidate ROI masks were visually inspected. Sixth, the ROI seed list was pruned to retain only those MTL ROI seeds (the anchor ROIs in ROI pairs of interest) that generated candidate ROIs through the F-statistical map analysis. Finally, individual subject average time series for the final F-statistic map-driven ROI masks were computed and stored.

The above ROI identification procedure yielded ROI “pairs of interest” in which the anchor element in each ROI pair was a left (right) hemisphere MTL ROI. The second element (non-anchor) in each ROI pair was the corresponding F-statistic map-driven ROI whose position was determined by the data. For example, in an ROI pair of interest whose anchor element was in left MTL, the position of the second ROI could lie in ipsilateral or contralateral hemisphere, including MTL. For the left hemisphere, 22 MTL ROI seeds formed the anchor MTL element in 50 ROI pairs of interest (see Supplemental Fig. 3). For the right hemisphere, 38 MTL ROI seeds formed the anchor MTL element in 82 ROI pairs of interest (see Supplemental Fig. 4). A cluster analysis (AFNI *3dclust*) of the sum of non-anchor ROI masks showed that they comprised a restricted subset of brain regions. For left hemisphere, there were 31 clusters with a maximum of three ROI masks in overlapping anatomical positions. For right hemisphere, there were also 31 clusters with a maximum of five ROI masks in overlapping anatomical positions. Findings in the present study described in detail below are with respect to these anchor MTL and non-anchor ROI pairs of interest.

2.8. ROI time series quality assurance

The rationale for the ROI time series quality assurance procedure below is in response to the observation of anomalously large variances (compared to the total distribution of variances) in a small percentage (< 0.1%) of residual time series generated by the image processing stream. There was no obvious pattern of occurrence with respect to subject, diagnosis, or ROI. Individual ROI residual time series were

band-pass filtered (4th order Butterworth, $f = \{0.01, 0.1\}$). The 3rd-130th (of the original 140 or 200 TRs) time series elements were retained as the candidate final ROI time series. A subject ROI time series was excluded from group-level analysis if any of the following conditions were true: a) the time series was constant; b) the time series standard deviation, $\sigma > 20.0$; or c) the fraction of time points with values greater than the outlier threshold θ exceeded 5%. The outlier threshold was set as $\theta = \mu + 3\sigma$, where μ was the time series average value, and σ the standard deviation. Threshold values were manually set and frozen prior to effects analysis. In limited testing following completion of effects analysis, relaxation of thresholds had no impact on reported results.

2.9. ROI pairwise correlation analysis

ROI pairs were subjected to group-level correlation analysis and ANOVA. The core statistical method was one-way, three-factor (clinical group) ANOVA, with *post hoc t*-tests applied pairwise (between factors) only for significant ANOVA tests. Correction for large-scale multiple testing was implemented through False Detection Rate (FDR) correction (Benjamini and Hochberg, 1995) and permutation repeated measures ($N = 5000$) (Nichols and Holmes, 2002; Efron, 2010; Eklund et al., 2016).

2.10. Assignment of anatomical position to an ROI coordinate

ROI seed coordinates were mapped to anatomical locations by analyzing the output of the AFNI *whereami* output. The AFNI *whereami* tool maps an input coordinate to anatomical position with respect to a multiplicity of atlases. To assign an anatomical label we used the “Focus Point”, and “Within 2 mm” or “Within 4 mm” outputs from the Talairach-Tournoux, MNI (Macro Labels, N27), and MNI (Cytoarchitectonic Max Probability Maps) and checked for consistency. Results were visually confirmed.

3. Results

3.1. Cortical thinning in group-level mild AD-CN and AD-EMCI contrasts, but not in the EMCI-CN contrast

The effect of clinical category on cortical thinning was evaluated using one-way, three-factor ANOVA on estimates of cortical thickness from 34 cortical regions per hemisphere (68 total) (Supplemental Table 1; Supplemental Fig. 5). An FDR corrected ($q = 0.1$, $N = 68$ tests) ANOVA F statistic critical p value threshold, $p_F^* = 0.032$, identified 23 significant-tests. For significant ANOVA tests only, *post hoc* pairwise t -tests were computed and FDR-corrected ($q = 0.1$, $N = 23$ tests) per contrast and gave critical p value thresholds: EMCI-CN ($p_{EMCI, CN}^* = 0.006$); mild AD-CN ($p_{D, CN}^* = 0.037$); and AD-EMCI ($p_{D, EMCI}^* = 0.022$). There were twenty-one significant mild AD-EMCI comparisons and fifteen significant mild AD-CN comparisons. Effect sizes, measured by Cohen's d , were in the range $0.6 \leq d \leq 1.0$. There were two significant positive EMCI-CN comparisons (left and right paracentral lobule). All mild AD-EMCI and mild AD-CN contrasts were negative. There were no significant negative EMCI-CN comparisons.

3.2. Subcortical volume changes in group-level mild AD-CN and mild AD-EMCI contrasts, but not in the EMCI-CN contrast

The effect of clinical category on subcortical volumes was evaluated using one-way, three-factor ANOVA on estimates of subcortical volumes from 8 cortical regions per hemisphere (16 total) (Supplemental Table 2; Supplemental Fig. 5). An FDR-corrected ($q = 0.1$, $N = 16$ tests) one-way three-factor ANOVA F statistic p value, $p_F^* = 0.012$, identified eight significant-tests. For the significant ANOVA tests only, *post hoc* pairwise t -tests were computed and FDR-corrected ($q = 0.1$, $N = 8$

tests) per contrast: mild AD-CN ($p_{D, CN^*} = 0.004$); and mild AD-EMCI ($p_{D, EMCI^*} = 0.031$). There were eight significant mild AD-CN contrasts; and six significant mild AD-EMCI contrasts. Cohen's d values were in the range $0.3 \leq d \leq 1.1$. All significant pairwise comparisons for ventricles (e.g., inferior lateral ventricle) were positive and all significant pairwise contrasts for subcortical structures (e.g., whole hippocampus) were negative. With an FDR rate $q = 0.1$, by design set to be liberal, no p value fell below the FDR-corrected value ($N = 8$ tests) in the EMCI-CN contrast, which indicated no significant EMCI-CN comparisons.

3.3. Hippocampal subfield volume reduction in group-level mild AD-CN and mild AD-EMCI contrasts, but not the EMCI-CN contrast

Hippocampal subfields (11 per hemisphere) were analyzed similarly as above and all twenty-two ANOVA tests were significant, FDR corrected p value ($q = 0.1$, $N = 22$ tests), $p_F^* = 0.032$ (Supplemental Table 3). *Post hoc* pairwise t -tests detected twenty-two significant mild AD-CN comparisons ($p_{D, CN^*} = 0.029$, $N = 22$ tests), and eighteen significant AD-EMCI comparisons ($p_{D, EMCI^*} = 0.077$, $N = 22$ tests). Effect sizes, measured as Cohen's d , were at least "strong" and above, with left hemisphere effect scores uniformly higher than the right hemisphere (left: $0.9 \leq d \leq 1.1$; right: $0.7 \leq d \leq 0.86$). All significant AD-MCI and AD-CN hippocampal subfield pairwise contrasts were negative. For the MCI-CN contrast no p value was below the FDR-corrected value ($q = 0.1$, $N = 22$ tests).

3.4. Significant pairwise ROI functional connectivity changes in the EMCI-CN group-level contrast

The effect of clinical category on group average ROI pairwise functional connectivity was evaluated using one-way, three-factor ANOVA in separate analyses for the left hemisphere (50 ROI pairs of interest comprising 50 hypotheses, or simultaneous tests) and for the right hemisphere (82 ROI pairs of interest comprising 82 simultaneous tests). For the left hemisphere, an FDR-corrected ($q = 0.05$, $N = 50$ tests) ANOVA F statistic critical p value threshold, $p_F^* = 0.026$, identified 28 significant-tests (Supplemental Table 4). For the significant ANOVA tests only, *post hoc* pairwise t -tests were computed and FDR-corrected ($q = 0.05$, $N = 28$ tests) independently per contrast: EMCI-CN ($p_{MCI, CN^*} = 0.0168$); mild AD-CN ($p_{D, CN^*} = 0.0214$); and mild AD-MCI ($p_{D, MCI^*} = 0.0364$). Of the 28 significant ANOVA comparisons, there were ten significant *post hoc* MCI-CN t -test comparisons (*post hoc* pairwise t -test $p < p_{EMCI, CN^*}$). Results are summarized in Table 3. Six of the ten EMCI-CN comparisons were positive (indicating hyperconnectivity) with Cohen's effect size d , $0.52 \leq d \leq 0.92$. Four of the ten were negative (indicating hypoconnectivity) with Cohen's d , $0.52 \leq d \leq 0.79$.

For the right hemisphere, an FDR-corrected ($q = 0.05$, $N = 82$ tests) ANOVA F statistic critical p value threshold, $p_F^* = 0.0102$, identified 17 significant MCI-CN comparisons (Supplemental Table 5). For the significant ANOVA tests only, *post hoc* pairwise t -tests were computed and FDR-corrected ($q = 0.05$, $N = 17$ tests) independently per contrast: EMCI-CN ($p_{MCI, CN^*} = 0.027$); mild AD-CN ($p_{D, CN^*} = 0.0034$); and mild AD-EMCI ($p_{D, MCI^*} = 0.0278$). Of the 17 significant ANOVA comparisons, there were 13 significant *post hoc* EMCI-CN t -test comparisons (*post hoc* pairwise t -test $p < p_{EMCI, CN^*}$). Results are summarized in Table 4. Nine of the 13 EMCI-CN comparisons were positive (indicating hyperconnectivity) with Cohen's effect size d , $0.45 \leq d \leq 0.95$. Four of the 13 were negative (indicating hypoconnectivity) with Cohen's d , $0.57 \leq d \leq 0.73$.

3.5. Parcellation of functional connectivity changes of left MTL in the group-level EMCI-CN contrast

The positions of left MTL anchor ROI masks for significant ROI pairs of interest in the EMCI-CN contrast are shown in sagittal section (Fig. 1 (top)) and coronal section (Fig. 3 (left)). Positions of the corresponding

Table 3
Left MTL ROI - ROI pairwise significant MCI - CN comparisons.

Anatomical Region(s)	ANOVA (1-way, 3-levels)					Group Average Fisher Z Value		EMCI - CN <i>post hoc t</i>		AD - CN <i>post hoc t</i>		AD - EMCI <i>post hoc t</i>		
	F	p	p*	n	p*	CN	MCI	AD	FDR p*	d	p	FDR p*	d	p
ROI pair hyper-connectivity MCI vs CN														
L: Uncus, BA36, Hipp (EC)	11.3	0.00004	0.0000		0.0000	-0.03	0.18	0.24	< 0.001	0.92	< 0.001	0.92	1.09	0.1488
L: Hipp (CA, FD)	8.7	0.00034	0.0010		0.0010	0.05	0.13	0.23	0.0156	0.52	< 0.001	0.52	1.01	0.0138
L: BA35, BA36, Hipp (SUB, CA)	7.0	0.00145	0.0018		0.0018	-0.04	0.14	0.04	< 0.001	0.83	0.0406	0.42	0.80	0.0162
L: Hipp (CA)	6.3	0.00252	0.0032		0.0032	-0.08	0.05	-0.08	0.0016	0.66	0.4716	0.02	0.66	0.0006
L: BA27, Hipp (FD, CA, SUB)	5.6	0.00489	0.0056		0.0056	0.00	0.08	-0.04	0.0168	0.52	0.1380	0.27	0.74	0.0012
L: Uncus, BA36, BA28, Hipp (SUB)	4.4	0.01515	0.0188		0.0188	-0.06	0.08	0.06	0.0042	0.65	0.0096	0.57	0.38	0.3524
ROI pair hypo-connectivity MCI vs CN														
L: Hipp (FD, CA, SUB), Ling. G.	5.8	0.00424	0.0040		0.0040	0.20	0.05	0.09	0.0002	0.79	0.0050	0.63	0.19	0.2098
L: BA35, BA36, Hipp (SUB, CA)	4.6	0.01187	0.0122		0.0122	0.21	0.08	0.10	0.0034	0.68	0.0142	0.56	0.09	0.3586
L: BA28, BA35, Hipp (SUB, EC, CA)	4.5	0.01291	0.0104		0.0104	0.08	-0.05	0.07	0.0098	0.58	0.4490	0.04	0.64	0.0040
L: Caudate tail, Hipp (CA, FD)	3.8	0.02570	0.0260		0.0260	0.12	0.01	0.06	0.0016	0.71	0.0622	0.38	0.27	0.1258

ACC = anterior cingulate cortex; AD = Alzheimer's disease; CA = cornu ammonis; CN = cognitively normal; EC = entorhinal cortex; FD = dentate gyrus; FDR = false detection rate; Hipp = hippocampus; Ling. G. = lingual gyrus; MCI = mild cognitive impairment; MTL = medial temporal lobe; ROI = region of interest; SUB = subiculum. Supplemental Information Table 6 (Worksheet EMCI-CN_Detail) provides additional details, including ROI MNI coordinates. Bold font indicates statistical significance under false-detection rate correction for multiple hypothesis testing.

Table 4
Right MTL ROI - ROI pairwise significant MCI - CN comparisons.

Anatomical Region(s)	ANOVA (1-way, 3-levels)				Group Average Fisher Z Value		EMCI - CN post hoc t		AD - CN post hoc t		AD - EMCI post hoc t	
	F	p	p*	n = 81	CN	AD	p	d	p	d	p	d
MTL ROI												
ROI pair hyper-connectivity MCI vs CN												
R: Uncus, BA28, Hipp (CA, SUB)	11.6	0.00003	0.0000		-0.12	0.04	0.05	0.0000	0.95	0.0000	1.14	0.4620
R: BA36, Hipp (CA, FD)	8.7	0.00032	0.0002		-0.05	0.09	-0.08	0.0000	0.89	0.2916	0.14	0.0006
R: BA20, Uncus, Hipp (EC, SUB, CA)	7.8	0.00069	0.0004		-0.12	0.04	-0.05	0.0000	0.91	0.0462	0.42	0.0116
R: BA27, Hipp (FD, CA)	6.9	0.00152	0.0014		-0.04	0.06	-0.06	0.0056	0.64	0.2870	0.14	0.0000
R: CAudate, Hipp (CA, FD)	6.8	0.00163	0.0014		-0.08	0.07	-0.06	0.0016	0.75	0.3180	0.11	0.0006
R: Hipp (CA, SUB, FD)	6.6	0.00204	0.0016		-0.05	0.05	-0.06	0.0034	0.67	0.3732	0.08	0.0004
R: Uncus, BA28, BA34, Hipp (EC)	6.5	0.00228	0.0036		-0.06	0.08	0.11	0.0024	0.70	0.0006	0.85	0.2704
R: BA35, BA36, Hipp (SUB, CA)	5.4	0.00611	0.0088		-0.09	0.04	-0.04	0.0012	0.77	0.1060	0.31	0.0278
R: Uncus, BA34, Amyg, Hipp (EC)	4.7	0.01134	0.0102		-0.01	0.06	-0.06	0.0270	0.45	0.1468	0.26	0.0016
ROI pair hypo-connectivity MCI vs CN												
R: BA30, Hipp (FD, CA)	7.0	0.00145	0.0010		0.12	-0.01	0.14	0.0020	0.73	0.3148	0.11	0.0016
R: Uncus, BA28, BA35, Hipp (EC)	6.4	0.00232	0.0012		0.14	0.03	-0.03	0.0088	0.57	0.0002	0.81	0.0930
R: Amyg, Hipp (CA)	5.9	0.00386	0.0052		0.15	0.04	0.17	0.0030	0.63	0.3686	0.08	0.0010
R: Hipp (CA, FD, SUB)	5.8	0.00405	0.0048		0.02	-0.10	0.02	0.0012	0.70	0.4836	0.01	0.0016

ACC = anterior cingulate cortex; AD = Alzheimer's disease; Amyg = amygdala; CA = cornu ammonis; CN = cognitively normal; EC = entorhinal cortex; FD = dentate gyrus; FDR = false detection rate; Hipp = hippocampus; EMCI = early mild cognitive impairment; MTL = medial temporal lobe; ROI = region of interest; SMA = supplemental motor area; SUB = subiculum. Supplemental information Table 6 (Worksheet MCI-CN_Detail) provides additional details, including ROI MNI coordinates. Bold font indicates statistical significance under false-detection rate correction for multiple hypothesis testing.

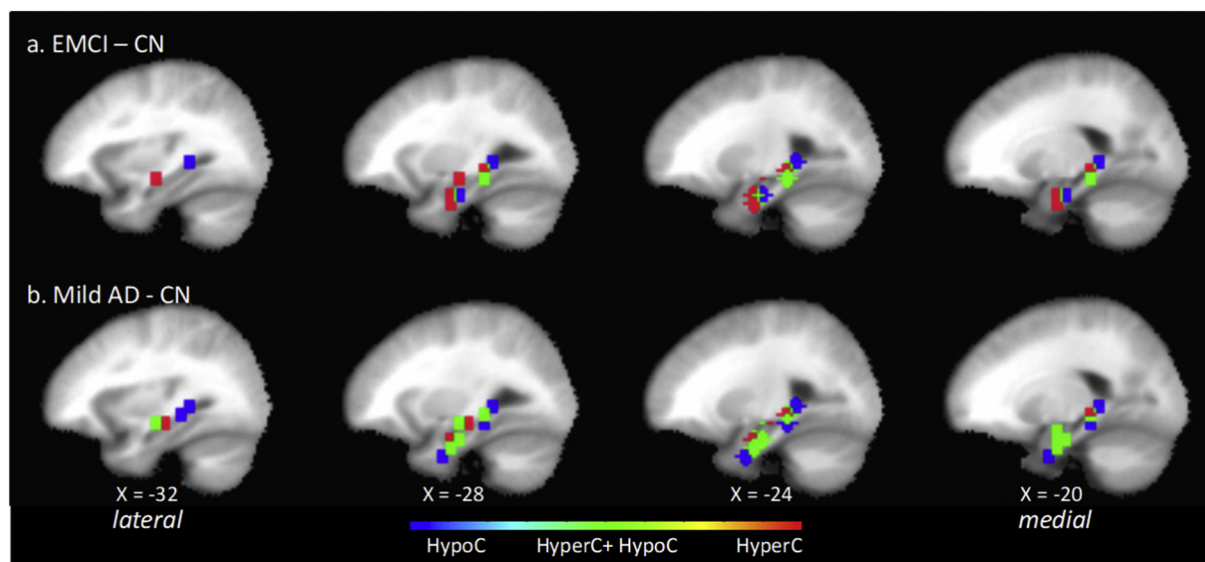


Fig. 1. Position in the left hemisphere sagittal plane (4 mm stride) of anchor MTL ROI elements of significant ROI pairs of interest in the EMCI – CN contrast (top) and mild AD – CN contrast (bottom). Shown are ROI masks for the 6-mm radius volume centered at the ROI seed. In both contrasts, ROIs group in a ventral anterior subzone and a dorsal posterior subzone. There is progressive change that may correlate with disease progression. In the mild AD – CN contrast, there are more significant ROI pairs of interest collectively whose anchor MTL ROIs cover a larger extent of the MTL compared to EMCI – CN. In addition, there is an increase in the number of individual MTL ROIs that form multiple significant ROI pairs in which one pair is of type hypoC and the other hyperC. Positions of the ROI paired with each MTL ROI shown are summarized in Table 3, their MNI coordinates are listed in Supplemental Tables 4 and 6, and corresponding image maps are shown Supplemental Figs. 6 and 7. The direction of ROI pair functional change is color-coded for hyperconnectivity (red), hypoconnectivity (blue), and simultaneous hyperconnectivity and hypoconnectivity (green). (For interpretation of the references to color in this figure legend, the reader is referred to the web version of this article.)

non-anchor paired ROIs are discussed next and shown in Supplemental Fig. 6. The spatial organization of the ten MTL anchor ROI masks was analyzed using AFNI *3dclust* which identified three clusters oriented along a ventral-medial to dorsal-lateral axis in the left MTL. First, in the ventral medial cluster, in the area of the hippocampal head, the most medial anchor ROIs were positioned in the parahippocampal gyrus (uncus), and Brodmann Areas 35 and 36, and were ipsilaterally hyperconnected with a more rostral non-anchor ROI positioned in Area 34. More laterally in this cluster, anchor ROI positions progressively shifted to Area 28, hippocampus (subiculum and CA) and parahippocampal gyrus. Functional connectivity changes with paired non-anchor ROIs consisted of hyperconnectivity with ROIs in ipsilateral and contralateral Area 38, and hypoconnectivity with a contralateral ROI positioned laterally in Area 45 and 47.

A second cluster of MTL anchor ROI masks, lateral and dorsal to the ventral medial cluster, was positioned in its medial subregion in the hippocampus (subiculum, CA), and in its lateral subregion in the hippocampus (CA) in the region of the caudate tail and parahippocampal gyrus. The anchor ROI in this cluster was hyperconnected with its paired non-anchor ROI positioned in contralateral lateral Area 10 adjacent to Area 47.

Last, in the dorsal cluster of anchor ROI masks, its medial subregion was positioned in Area 36 and hippocampus (CA, FD, subiculum), and in its lateral subregion in hippocampus (CA) in the region of the caudate tail and parahippocampal gyrus. Functional connectivity changes in this subzone included: a) an anchor ROI hyperconnected with a contralateral non-anchor ROI positioned in lateral Area 10/11; b) an anchor ROI hypoconnected with a non-anchor ROI located in precuneus; c) an anchor ROI hypoconnected with a non-anchor ROI located in anterior cingulate cortex; and d) an anchor ROI simultaneously hyperconnected with a contralateral non-anchor ROI located in the region of uncus, Area 28 and 36, and hypoconnected with a non-anchor ROI located in precuneus.

In summary, in the left hemisphere, for the identified significant ROI pairs in the EMCI-CN contrast, the anchor MTL ROIs clustered

within focal subregions of entorhinal and perirhinal areas, hippocampus, and parahippocampal gyrus. The spatial pattern of functional connectivity changes with corresponding non-anchor ROIs suggested that MTL subzones were: a) ventrally, bilaterally hyperconnected, including uncus and Area 38; b) dorsally and laterally, simultaneously hyperconnected and hypoconnected with distinct non-overlapping contralateral lateral frontal cortical regions; and c) over an extended dorsal and lateral zone, hypoconnected with midline regions associated with anterior and posterior default-mode network (DMN) nodes.

3.6. Parcellation of functional connectivity changes of right MTL in the group-level EMCI-CN contrast

The position of right MTL anchor ROI masks for significant ROI pairs of interest in the EMCI-CN contrast are shown in sagittal section (Fig. 2 (top)) and coronal section (Fig. 3 (left)). Positions of the corresponding non-anchor paired ROIs are discussed next and shown in Supplemental Fig. 7. The spatial organization of the 13 MTL anchor ROI masks was analyzed using AFNI *3dclust* which identified two clusters oriented along a ventral-medial to dorsal-lateral axis. In the first cluster, near the head of the hippocampus, in its medial subregion, anchor ROIs were positioned in the uncus, and Areas 28, 34, 35 and 36. Anchor ROI positions in the middle and lateral subregions progressively shifted to the hippocampus (subiculum, FD and CA). Pairwise functional connectivity with corresponding non-anchor ROIs consisted of an interleaved pattern of hyperconnectivity and hypoconnectivity with small regions of overlap. In the medial subregion, immediately adjacent anchor ROIs were either hyperconnected with an ipsilateral lateral non-anchor ROI in Area 44 and 45, or hypoconnected bilaterally with a non-anchor ROI in Area 10 at the midline. In the middle subregion there was a zone of hypoconnectivity with an ipsilateral non-anchor ROI in the region of Area 38 and 21. Immediately lateral to this hypoconnected anchor ROI, were a pair of anchor ROIs that were hyperconnected with non-anchor ROIs positioned in contralateral uncus, Area 38 and 28. In the most lateral subregion, anchor ROIs were hyperconnected

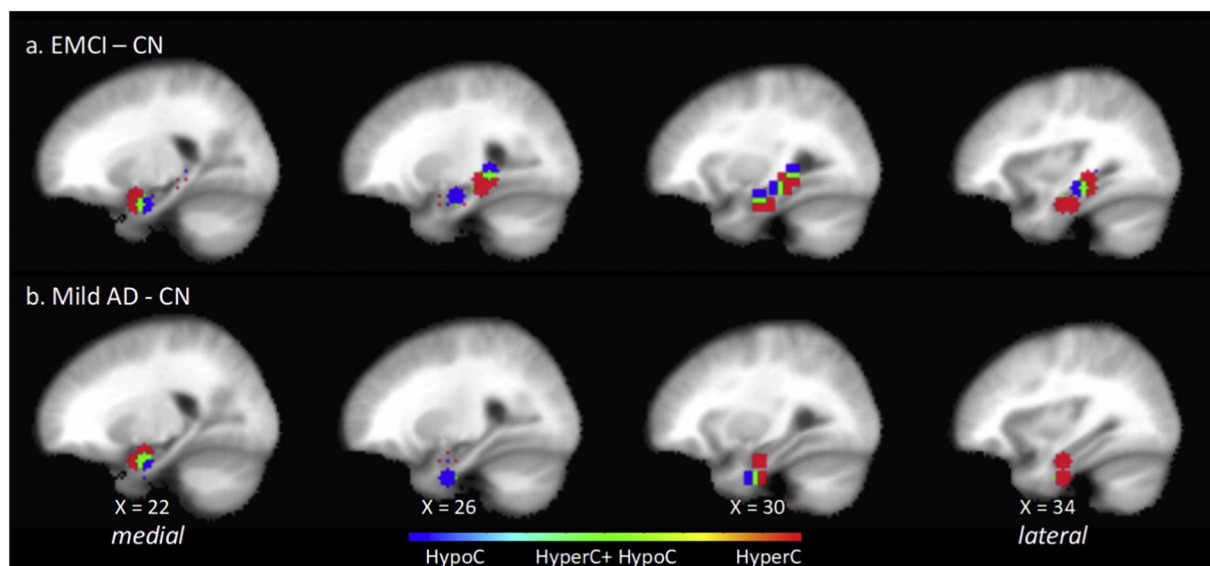


Fig. 2. Position in the right hemisphere sagittal plane (4 mm stride) of anchor MTL ROI elements of significant ROI pairs of interest in the EMCI – CN contrast (top) and mild AD – CN contrast (bottom). Shown are ROI masks for the 6-mm radius volume centered at the ROI seed. In the EMCI – CN contrasts, but not the mild AD – CN, ROIs group in a ventral anterior subzone and a dorsal posterior subzone. In the mild AD – CN contrast, the dorsal posterior ROI cluster is not present, indicating that there may be a class of ROI pairwise functional connectivity changes that persist and those that are associated specifically with the CN to EMCI transition. Positions of the ROI paired with each MTL ROI shown are summarized in Table 4, their MNI coordinates are listed in Supplemental Tables 5 and 6, and corresponding image maps are shown Supplemental Figs. 8 and 9. The direction of ROI pair functional change is color-coded for hyperconnectivity (*red*), hypoconnectivity (*blue*), and simultaneous hyperconnectivity and hypoconnectivity (*green*). (For interpretation of the references to color in this figure legend, the reader is referred to the web version of this article.)

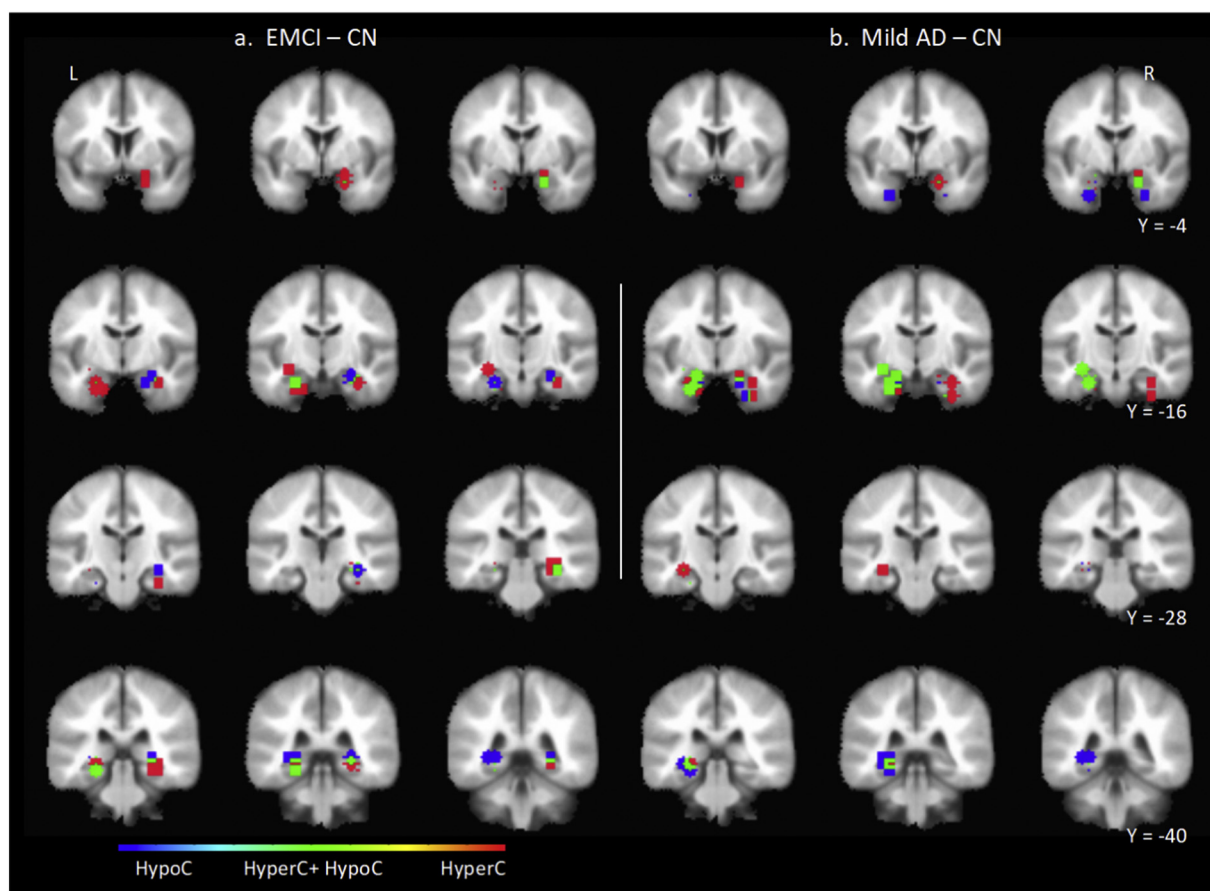


Fig. 3. Coronal series showing the position of anchor MTL ROI elements of significant EMCI – CN contrast ROI pairs (a) and mild AD – CN contrast (b) ROI pairs. Shown are the anchor MTL ROI masks consisting of a 6-mm radius volume centered at the anchor MTL ROI seed. The direction of ROI pair functional change is color-coded for hyperconnectivity (*red*), hypoconnectivity (*blue*), and simultaneous hyperconnectivity and hypoconnectivity (*green*). (For interpretation of the references to color in this figure legend, the reader is referred to the web version of this article.)

bilaterally with a non-anchor ROI in the region of Area 11 and 25 at the midline.

The second cluster of anchor ROIs, dorsal to the first, was characterized by multiple immediately adjacent anchor ROIs with a distinct distribution of functional connectivity with corresponding non-anchor ROIs. In its medial extent, anchor ROIs in this cluster were positioned in Area 35, 36 and hippocampus (CA, FD, subiculum) and in its lateral extent in hippocampus (CA, FD) in the region of the caudate tail, but not parahippocampal gyrus. In the medial extent of this cluster of anchor ROIs, functional connectivity changes with non-anchor ROIs consisted of hyperconnectivity with an ipsilateral lateral ROI positioned in Area 10 and 11. In the lateral extent of this cluster of anchor ROIs, there was hyperconnectivity with an ipsilateral lateral non-anchor ROI whose position shifted to that of Area 9 and 10. In the medial subzone of this cluster of anchor ROIs, there was functional hypoconnectivity with a corresponding paired non-anchor ROI positioned in contralateral supplemental motor area (SMA) and in its lateral extent hyperconnectivity bilaterally with a non-anchor ROI positioned in Area 11 at the midline.

In summary, in the right hemisphere in the transition from CN to EMCI, the spatial pattern of pairwise functional connectivity changes between anchor MTL and non-anchor ROIs suggests that MTL subzones were: a) ventrally, hyperconnected with contralateral uncus and Area 38 and hypoconnected with ipsilateral anterior Area 38; b) hyperconnected with ipsilateral lateral frontal cortex; and c) hypoconnected with frontal cortical zones at the midline in regions adjacent to or associated with anterior DMN midline nodes.

3.7. Significant pairwise ROI functional connectivity changes in the mild AD-CN group-level contrast

In the left hemisphere, an ROI pair was significant for functional connectivity changes in the mild AD-CN contrast for *post hoc* pairwise *t*-test critical *p* value threshold less than the FDR-corrected, $p_{D, CN}^* = 0.0214$, ($q = 0.05$, $N = 28$ tests). There were 21 significant mild AD-CN comparisons (Supplemental Tables 4 and 6). The MTL anchor ROI mask positions are shown in Fig. 1 (bottom) and Fig. 3 (right), and non-anchor ROI mask positions are shown in Supplemental Fig. 8. Comprising the 21 significant comparisons were: a) nine hyperconnected pairs, Cohen's *d*, $0.52 \leq d \leq 0.86$, median = 0.75; and b) 12 hypoconnected pairs, Cohen's *d*, $0.7 \leq d \leq 0.86$, median = 0.64. There were more than twice as many mild AD-CN significant comparisons ($N = 21$) as there were EMCI-CN significant ROI comparisons ($N = 10$). There were 1.5 times as many hyperconnected ROI pairs ($N_{AD-CN} = 9$ vs $N_{EMCI-CN} = 6$) and 3.0 times as many hypoconnected ROI pairs ($N_{AD-CN} = 12$ vs $N_{EMCI-CN} = 4$). Six of the nine significant hyperconnected and ten of the twelve significant hypoconnected ROI pairs were not significant in the EMCI-CN contrast. Despite the increase in numbers of significant ROI pairs, the overall spatial organization of MTL ROI positions was similar to that of the EMCI-CN contrast. The greater number of co-located anchor ROIs preferentially distributed in the ventral medial and dorsal lateral ROI clusters.

A striking feature in the mild AD-CN contrast was individual anchor MTL ROIs which formed multiple significant ROI pairs. Fourteen left hemisphere MTL ROIs comprised the anchor ROI in 21 significant ROI pairs. This was compared to nine MTL anchor ROIs that formed 10 significant ROI pairs in the EMCI-CN contrast. In the mild AD-CN contrast, six MTL ROIs comprised the anchor element in two significant ROI pairs. The most common combination (four of six) was one hyperconnected pair and one hypoconnected pair. For example, an anchor ROI in ventral MTL (Area 35) was hyperconnected with a non-anchor ROI located contralateral Area 38 and simultaneously hypoconnected with a non-anchor ROI in the region of the orbital gyrus at the midline. As a second example, an anchor ROI in the dorsal MTL in hippocampus (CA) was hyperconnected with a contralateral non-anchor ROI located in the region of uncus and entorhinal cortex, and simultaneously

hypoconnected with a non-anchor ROI in contralateral lateral inferior temporal gyrus. In the single case of an anchor MTL ROI having two hypoconnections, an anchor ROI positioned in hippocampus (CA) adjacent to the parahippocampal gyrus, was hypoconnected with a non-anchor ROI located in precuneus at the midline and hypoconnected with a non-anchor ROI located in the contralateral lateral frontal cortex in Area 45 immediately adjacent to Area 47. Last, in the single case of an anchor MTL ROI having two hyperconnections, an anchor ROI positioned in the region of Areas 28, 25, 36 and uncus, was bilaterally hyperconnected with a non-anchor ROI located in Area 38.

In the right hemisphere, ROI pairwise tests were significant for functional connectivity changes in the AD-CN contrast with a *post hoc* pairwise *t*-test critical *p* value threshold less than the FDR-corrected, $p_{D, CN}^* = 0.0034$, ($q = 0.05$, $N = 17$ tests). There were six significant comparisons (Supplemental Tables 5 and 6). The MTL anchor ROI mask positions are shown in Fig. 2 (bottom) and Fig. 3 (right) and the paired non-anchor ROI mask positions are shown in Supplemental Fig. 9. Four of the six AD-CN comparisons were positive indicating hyperconnectivity with Cohen's effect size *d*, $0.7 \leq d \leq 1.14$. Two of these four significant comparisons were also significant in the EMCI-CN contrast, indicating persistence of effect with disease progression: hyperconnectivity with contralateral uncus; and hyperconnectivity with ipsilateral Area 44 and 45. Two of these four significant comparisons were not significant in the EMCI-CN contrast with the following characteristics: a) both MTL anchor ROIs were positioned in the region of the head of the hippocampus, entorhinal cortex and uncus; b) one (dorsal) was hyperconnected with a contralateral non-anchor ROI located in lateral Area 10; and c) the other (ventral) was hyperconnected with an ipsilateral non-anchor ROI located in medial Area 11 (nearly at the midline). Last, for two of the six significant mild AD-CN ROI pairs, neither of which was significant in the EMCI-CN comparison, the pairwise functional connectivity change was hypoconnectivity (Cohen's *d*, $0.77 \leq d \leq 0.81$). The anchor ROIs in these pairs were positioned in the region of the head of the hippocampus, entorhinal cortex and uncus. One (dorsal) was hypoconnected with a non-anchor ROI located in Area 10 at the midline; the other (ventral) was hypoconnected with a non-anchor ROI located in ipsilateral lateral A10 adjacent to A46.

Summarizing left and right hemisphere jointly, the spatial pattern of functional connectivity changes from CN to mild AD reflected a combination of consolidation, progression, and reversion of the changes observed in the CN to MCI contrast. First, there were not anchor ROIs positioned in additional MTL subzones. Second, additional significant ROIs in the mild AD-CN contrast clustered preferentially in the region of the head of the hippocampus, entorhinal cortex and uncus, compared to the wider distribution in the EMCI-CN contrast. Third, significant mild AD-CN non-anchor ROIs were positioned within similar cortical regions (e.g., lateral frontal cortex, midline regions) as in the EMCI-CN contrast or in additional regions (e.g., right inferior temporal cortex). Last, a combination of reversion and consolidation was evident in the absence in right hemisphere in the mild AD-CN contrast of the more dorsal cluster of ROIs present in EMCI-CN contrast.

3.8. EMCI-CN functional connectivity changes may persist or revert in the group-level mild AD-CN contrast

In the mild AD-CN contrast there were functional connectivity changes that persisted or were transient compared to the EMCI-CN contrast. In the left hemisphere for three of six EMCI-CN hyperconnected ROI pairs and for two of four EMCI-CN hypoconnected ROI pairs, the functional connectivity change persisted or was amplified in the mild AD-CN contrast. In the right hemisphere, however, only two of nine EMCI-CN hyperconnected ROI pairs and for one of four EMCI-CN hypoconnected ROI pairs, did the functional connectivity change persist. Examples of persistent effects included: a) left MTL and its ipsilateral and contralateral hyperconnectivity with Area 38; b) left MTL hypoconnectivity bilaterally with anterior cingulate cortex and

precuneus; and c) right MTL hypoconnectivity bilaterally with Area 10 at the midline. Of the set of ROI pairs with persistent functional connectivity changes in the EMCI-CN and mild AD-CN contrasts, only one ROI pair was monotone, *i.e.*, significant in all three contrasts EMCI-CN, mild AD-CN, and mild AD-EMCI. For this progressively hyperconnected ROI pair, the MTL ROI element was positioned in left MTL in the region of Areas 28, 35, 36 and uncus, and the second element was in a contralateral region with focal point in Area 38. In contrast, for three of six hyperconnected and for two of four hypoconnected significant EMCI-CN ROI pairs in the left hemisphere, and in all but three of 13 significant ROI pairs in the right hemisphere, the changes reversed course such that there was no significant difference in the mild AD-CN contrast.

In summary, there were monotonic and non-monotonic, transient and persistent changes in functional connectivity between the identified ROI pairs in the mild AD-CN contrast compared with the EMCI-CN contrast. The enduring changes observed across the CN, EMCI and mild AD progression include mutual bilateral hyperconnectivity between MTL and Area 38, and hypoconnectivity of left and right MTL with anterior and posterior regions immediately adjacent to or associated with midline DMN nodes.

3.9. Sensitivity analysis

In preliminary studies, we assessed by spot-checking the sensitivity of the detection of statistically significant (one-way, three-factor ANOVA ROI pair) functional connectivity comparisons to changes in preprocessing parameters. The results reported in this study were obtained with FWHM = 4.0 mm spatial smoothing in the AFNI preprocessing stage. Smoothing with FWHM = 6.0 mm or FWHM = 8.0 mm and FDR $q = 0.05$, eliminated the observation of significant ANOVA tests. In such cases, we did not proceed to the 5000 permutation repeated measures test (although we observed anecdotally using a 1000 permutation repeated measures test that a few significant tests were observed). Similarly, present results were obtained using an ROI defined as the 6.0 mm radius volume centered at a given source or target ROI seed. Expansion to an 8.0 mm radius volume eliminated the observation of significant ANOVA tests. In any of the above tests, when we relaxed the FDR q value, for example, to $0.05 \leq q \leq 0.20$, progressively greater numbers of significant ANOVA tests were observed. These preliminary observations drove the decision to proceed with FWHM = 4.0 mm and ROI volume radius = 6.0 mm where, with a conservative FDR $q = 0.05$.

We assessed the reproducibility of the reported results under repeated measures with different random number generator seeds in the 5000-trial permuted repeated measures. We completed two additional 5000-trial runs for the left hemisphere data and found that for the MCI-CN contrast (the only contrast analyzed in detail) there were comparable numbers of significant t -tests and same, adjacent or overlapping ROI pairs with comparable F statistic values to those reported here. The remaining pairs were typically in positions adjacent to or overlapped those reported.

We determined the impact of an even more conservative FDR value $q = 0.01$ on the reported pairwise ROI functional connectivity results. For the left hemisphere, the FDR corrected F statistic p value was ($p_F^* < 0.0018$) and there remained nine significant ANOVA tests. For the significant ANOVA tests only, *post hoc* pairwise t -tests were computed and FDR-corrected ($q = 0.01$, $N = 9$ tests) independently per contrast: $p_{EMCI, CN}^* = < 0.0001$; $p_{D, CN}^* = 0.0052$; $p_{D, EMCI}^* = 0.0014$. There were no significant hypoconnected ROI pairs. There were two significant hyperconnected EMCI-CN pairs and these are shown in Table 3 marked with an asterisk. For the right hemisphere, the FDR corrected F statistic p value was ($p_F^* < 0.0006$) and there remained five significant ANOVA tests. For the significant ANOVA tests only, *post hoc* pairwise t -tests were computed and FDR-corrected ($q = 0.01$, $N = 5$ tests) independently per contrast: $p_{EMCI, CN}^* = < 0.0001$; $p_{D, CN}^* =$

0.0018 ; $p_{D, EMCI}^* = 0.0008$. There were no significant hypoconnected ROI pairs. There were three significant hyperconnected EMCI-CN pairs and these are shown in Table 4 marked with an asterisk. In summary, the impact of an even more conservative FDR value $q = 0.01$ on reported EMCI-CN significant comparisons is that the finding of hypoconnected ROI pairs is not conserved; the finding of hyperconnected ROI pairs is conserved. For the mild D-CN contrast, findings are confirmed, although with reduced numbers, in that there remain significant comparisons in left and right hemisphere representing hyperconnected ROI pairs and hypoconnected ROI pairs.

4. Discussion

We report evidence of disruption of task-free resting state network functional connectivity in rsfMRI specifically involving MTL across Alzheimer's Disease stages (CN, EMCI, mild AD). An anatomically bootstrapped, data-driven procedure identified statistically significant comparisons in resting state functional networks having edges where one node was in the MTL and the other was at anatomical locations which from *post hoc* analysis corresponded with DMN nodes. The disruptions in functional connectivity presented as a non-monotonic complex of transient and persistent changes in hypo- and hyper-connectivity. Thus, the effect of Alzheimer's Disease progression on functional connectivity involving MTL is more complex than uniformly monotonic loss or gain of functional connectivity. We further compared and contrasted rsfMRI functional connectivity analysis with results of an automated analysis of standard (1 mm) structural T1 MRI which estimated subcortical structural volume reduction, hippocampal subfield volume reduction, and cortical thinning. Notably, in the EMCI-CN contrast, functional connectivity changes involving MTL anchor ROI and non-anchor ROI pairs were detected where evidence of neurodegeneration was not detected in hippocampus, hippocampal subfields, or in any cortical region, MTL or otherwise.

4.1. Structural imaging findings provide an important control for functional connectivity findings

In the event that the present study had reported rsfMRI results only, there would be a valid argument that the measured changes were merely a reflection of mechanisms or pathologies extrinsic to MTL, themselves originating in or reflected into the regions corresponding to non-anchor ROIs, and that the MTL had normal function. For that reason, it was important to evaluate neurodegeneration in MTL as well as the cortical regions corresponding to the non-anchor ROIs. A key structural MRI finding in Alzheimer's Disease is cortical atrophy (thinning and volume loss) that correlates with symptom severity and has a demonstrated diagnostic and prognostic value (Braak and Braak, 1991; Fan et al., 2008; Davatzikos et al., 2009; Lerch et al., 2005; Jack et al., 2008; Dickerson et al., 2009; Misra et al., 2009; Miller-Thomas et al., 2016). This finding was reproduced here (Supplemental Table 1) and served as an important group-level control for functional connectivity analysis. We hypothesized that the anatomical locations of the cortical ROIs observed in our functional connectivity analysis would correspond with previously demonstrated spatial patterns of cortical thinning. Indeed, the anatomically boot-strapped data-driven method employed in the present study identified significant EMCI-CN cortical ROI anatomical positions in areas known to be most vulnerable to cortical thinning. These included the rostral medial temporal cortex, temporal pole and superior frontal regions, but not the inferior temporal cortex. Significant functional connectivity changes involving inferior temporal cortex were however observed in the mild AD-CN contrast. Through evaluation of available standard FreeSurfer cortical thickness outputs – which included regions that incorporate and did not incorporate non-anchor ROIs – and observing the expected mild AD-CN effects, but not EMCI-CN effects, provides evidence in support of observed functional connectivity changes reflecting at least in part mechanisms intrinsic to

MTL (and that are pre-threshold for detection as volumetric changes).

The present study also reproduces key findings of hippocampal volume and hippocampal subfield volume loss with Alzheimer's Disease progression (Hyman, et al., 1984; Braak and Braak, 1991; Jack et al., 1992, 1998; Schuff et al., 2009; Boutet et al., 2014; Sorensen et al., 2016; Wolk et al., 2017). The confirmation of expected significant volume loss and significant functional connectivity changes in the mild AD-CN contrast provides a control for the present EMCI-CN and mild AD-CN findings.

The absence of significant reduction in whole hippocampus volume and hippocampal subfield volumes in the EMCI-CN contrast reported above is with respect to a widely available benchmark: up-to-date automated analysis (FreeSurfer) of research quality T1-weighted scans ($1.0 \times 1.0 \times 1.0 \text{ mm}^3$). We do not conclude that there are no morphometric changes taking place contemporaneously with the CN to MCI transition. Wolk et al. (2017), analyzed high resolution ($\sim 0.4 \times 0.4 \times 2 \text{ mm}^3$) T2-weighted MRI scans orthogonal to the long axis of the hippocampus at autopsy. They reported significant group-level reduction of MTL subfield volumes (e.g., Area 35, perirhinal cortex) in the CN to EMCI transition where whole hippocampus volumes were not significantly different. In a feasibility study of an *in vivo* approach, Boutet et al. (2014) used 7 T MRI to detect hippocampal subfield volume changes in an AD-CN contrast. These studies, together with present results, indicate the potential of dual functional and high-resolution morphometric biomarkers for detecting the earliest stages in the Alzheimer's Disease pathophysiology.

4.2. Comparison to prior work

With respect to our functional connectivity findings, there are several published reports of particular relevance (Greicius et al., 2004; Jones et al., 2011; Brier et al., 2012; Ward et al., 2014; Dillen et al., 2017). Greicius et al. (2004) performed a pairwise group-level (healthy control ($N = 14$) vs very mild or mild Alzheimer's Disease ($N = 13$)) independent components analysis (ICA) and ROI analyses of steady-state DMN connectivity during a simple sensorimotor task in a cohort drawn from the Washington University Alzheimer's Disease Research Center. Key findings were: a) prominent bilateral coactivation of the hippocampus with DMN in both clinical groups; and b) disruption of hippocampal – PCC connectivity in the Alzheimer's Disease group. Dillen et al. (2017) performed a within-group and between-group analysis of hippocampus and DMN node functional connectivity analysis in a cohort drawn from an outpatient population at the Memory Clinic Cologne Julich (healthy control ($N = 25$), subjective cognitive decline (SCD) ($N = 28$); and prodromal Alzheimer's Disease ($N = 25$)). Significantly, they reported a decoupling of hippocampus with posterior cortical DMN nodes in both SCD and prodromal Alzheimer's Disease groups.

Brier, et al., (2012) performed a cross-sectional analysis of five task-free resting state networks (RSN), including DMN, in a cohort drawn from the Knight Alzheimer's Disease Research Center at Washington University in St. Louis. Subjects were assigned to one of three groups according to CDR scores 0 (cognitively normal, $N = 386$), 0.5 (very mild AD, $N = 91$), and 1.0 (mild AD, $N = 33$). The study reported summary measures of intranetwork and internetwork steady-state correlation structure based on Fisher z-transformed pairwise Pearson correlation analysis of ROI seed-based average time series. While not uniformly statistically significant, the conclusion was that there was group-level progressive loss of intranetwork and internetwork connectivity. The study also reported results of the effect of clinical group (CN, MCI, Alzheimer's Disease) on ROI pair-wise functional connectivity between PCC and eight other DMN nodes. For two ROI pairs (PCC – medial prefrontal cortex; PCC –left inferior temporal lobe) there was a statistically significant reduction of connectivity in the CDR 0.5 group compared to the CDR 0 group. Present results confirm the Brier, et al. observation of ROI pair-wise functional connectivity loss in the

MCI-CN comparison. They also extend the Brier, et al. results. First, where Brier, et al., utilized a single ROI seed to estimate midline DMN structures (e.g., PCC, thalamus), the present study utilized an anatomically bootstrapped data-driven method that identified distinct left and right ROI seeds in these structures. The result was a more fine-grained ROI pair-wise analysis which led to the observation of widespread left- and right-hemispheric MTL hyperconnectivity ventrally together with disconnection with midline DMN and DMN coactivated regions. Second, by design, the present study included hippocampus and other MTL structures in the analysis and presented evidence that these structures are involved in the loss of functional connectivity in the MCI-CN comparison.

Jones et al. (2011) performed group-level functional connectivity analyses of task-free steady-state DMN connectivity in cohorts drawn from the Mayo Clinic Alzheimer's Disease Research Center and Mayo Clinic Study of Aging. Age-related changes in DMN functional connectivity were analyzed using an ICA approach in a cognitively normal cohort ($N = 341$). The age-related changes consisted of differential effects in anterior and posterior DMN connectivity: a) anterior DMN showed both increases and decreases in connectivity within the frontal lobe; and b) posterior DMN showed a pattern of predominantly but not exclusively decreases in connectivity. An age-matched CN and Alzheimer's Disease group analysis using both ICA and seed-based ROI approaches concluded that DMN connectivity changes in Alzheimer's Disease represent an acceleration of the same aging pattern observed in the control sample. The present study complements these findings by providing additional detailed parcellation of changes in MTL, separately analyzed in left and right hemisphere.

Ward et al. (2014), in their study comparing resting state data and an associative memory encoding task, concluded that the parahippocampal gyrus is the primary hub of the DMN in the MTL during resting state. Their report ends with the suggestion that measuring PHG connectivity may provide a biomarker of early Alzheimer's Disease. The present study, although motivated by a different hypothesis (that functional connectivity changes temporally precede detection of significant neurodegeneration) and using an entirely independent analysis method (anatomically bootstrapped, data-driven method), provides quantitative evidence in support of the Ward, et al., suggestion. We observe evidence of functional disconnection bilaterally between posterior cortical DMN nodes (anterior cingulate cortex, precuneus) and parahippocampal gyrus as part of a larger pattern of disruption involving anterior and posterior DMN, and subcortical structures including hippocampus and parahippocampal gyrus.

Finally, we note the presence and persistence bilaterally of hyperconnectivity with Alzheimer's Disease progression reported here. Palop and Mucke (2010) linked synaptic-level mechanisms to network-level disruptions including neuronal synchronization, epileptiform activity, and seizures, among others, as possibly underlying cognitive disruption associated with Alzheimer's Disease. Putcha, et al., (n.d.), in a forced-choice recognition memory test observed that increased hippocampal activity measured by fMRI may be an early signal of AD-related neurodegeneration. In a different memory test paradigm, Bakker et al. (2012) observed that management of hippocampal hyperactivity as measured by fMRI may have potential therapeutic benefit. Huijbers et al. (2015) analyzed hippocampal activity cross-sectionally and longitudinally in Alzheimer's disease clinical progression and related findings to both neuronal compensation and amyloid beta toxicity β . Recently, Sepulcre et al. (2017) described hypo- and hyper- functional connectivity in a multi-modal imaging study. The present report demonstrates disruption of functional correlation as distinct from activation. Reported present results suggest a complementary link between clinical manifestation of Alzheimer's Disease stages, distributed network-level phenomena (in delimited regions corresponding to the reported anchor MTL and non-anchor ROIs), and their underlying synaptic-level mechanisms.

4.3. Limitations

Limitations of the present study principally relate to the study population itself, the imaging data, and image processing methods. First, the study population, by excluding participants with other neurological injury or findings and being comprised essentially of a single ethnicity, was not representative of a general age-matched clinical population. Second, the effect on functional connectivity measures of the “pencil artefact”, found in ADNI image data in left lateral frontal cortex, is unknown and introduces uncertainty in the interpretation of present results. For example, there was a multiplicity of significant ROI pairs between right MTL and ipsilateral lateral frontal cortex. There was not a comparable finding in the left hemisphere, whereas there were bilateral findings with respect to midline ROIs. Third, image processing limitations include: a) use during pre-processing stage of an atlas (AFNI: MNIavg152) derived from younger brains than used in this study which could have injected systematic error into the data; b) use of FreeSurfer default settings which may have been sub-optimal given the population comprising this study; and c) the reliance on automated segmentation of *in vivo* MRI images of whole hippocampus and hippocampal subfields. Automated segmentation of hippocampal subfields, in particular, is subject to known limitations including, for example, the absence in the FreeSurfer atlas “training data” of certain boundaries such as those between CA fields along the pyramidal layer of the hippocampus (Iglesias et al., 2015). Interpretation and comparison of present results with respect to other studies should proceed with caution as there exists a multiplicity of segmentation approaches and labelling conventions (Yushkevich et al., 2015).

Finally, there is not a consensus regarding the use or non-use of GSR (Murphy and Fox, 2017). The present study did not apply GSR. The reasoning was two-fold. First, given the “pencil artefact” in ADNI data, it was problematic whether and how to obtain a viable global signal estimate. Second, the preprocessing procedure estimated and removed motion confounds and the ROI identification procedure applied ventricle and white matter masks to minimize the influence of non-grey matter signals. However, any global or large-scale regional neuronal fluctuations would not be controlled in this procedure.

4.4. Translational considerations

A challenge in the consideration of functional connectivity biomarkers is that there are in clinical use well-established semi-quantitative structural biomarkers of Alzheimer's Disease (Fazekas et al., 1987; Scheltens et al., 1992; Wahlund et al., 2001). These methods have been extended in clinical practice and medical research to include T1-based quantitative semi-automated and automated methods for mild cognitive impairment and Alzheimer's Disease diagnosis, tracking and prognosis (Dale et al., 1999; Smith et al., 2002; Chupin et al., 2009; Davatzikos et al., 2009; Leung et al., 2010; Leung et al., 2013; Misra et al., 2009; Schuff et al., 2009; Sorensen et al., 2016).

The development of semi-automatic and automatic derivation of resting-state functional connectivity biomarkers for Alzheimer's Disease classification is comparatively new (Grecius, et al., 2004; Sepulcre et al., 2017; and Wiepert et al., 2017). First, Grecius, et al., (2004) applied a goodness-of-fit test between an ICA-derived PCC-based or whole DMN-based templates and individual subject images to classify Alzheimer's Disease or healthy aging individuals. Second, Wiepert et al. (2017), proposed a network failure quotient (NFQ). The measure combined the increases and decreases in DMN subsystem connectivity with Alzheimer's Disease progression into a single statistic. The authors demonstrated that the statistic (“trained” in an ADNI cohort) had the greatest effect size in differentiating CN and AD in a distinct cohort (Mayo Clinic). Last, Sepulcre et al. (2017) applied graph theory methods to demonstrate distinct associations between functional connectivity changes in cognitively normal aging brains and cortical patterns of *in vivo* tau and amyloid β positron emission tomography

imaging. A remaining challenge is to fully characterize classification sensitivity and specificity of functional connectivity biomarkers compared to CSF-derived, plasma-derived and *in vivo* and structural imaging modalities.

5. Conclusion

The contribution of the present study in the context of established structural and emerging rsfMRI functional connectivity biomarkers is four-fold. First, we demonstrated that functional connectivity changes were detected where structural changes were not yet in evidence using widely available imaging clinic resources. Second, we measured functional connectivity changes anchored in the MTL structures directly implicated in the earliest stages of Alzheimer's Disease. Third, we observed a complex pattern of changes: monotonic and non-monotonic, and persistent and reverting patterns of hyperconnectivity and hypoconnectivity, in a spatial organization closely related to the default-mode network. Last, we adopted a multi-modal functional-structural approach and demonstrated differential potential clinical value of resting-state functional connectivity biomarkers in Alzheimer's Disease diagnosis, tracking and prognosis.

Acknowledgements

Data collection and sharing for this project was funded by the Alzheimer's Disease Neuroimaging Initiative (ADNI) (National Institutes of Health Grant U01 AG024904) and DOD ADNI (Department of Defense award number W81XWH-12-2-0012). ADNI is funded by the National Institute on Aging, the National Institute of Biomedical Imaging and Bioengineering, and through generous contributions from the following: AbbVie, Alzheimer's Association; Alzheimer's Drug Discovery Foundation; Araclon Biotech; BioClinica, Inc.; Biogen; Bristol-Myers Squibb Company; CereSpir, Inc.; Cogstate; Eisai Inc.; Elan Pharmaceuticals, Inc.; Eli Lilly and Company; EuroImmun; F. Hoffmann-La Roche Ltd. and its affiliated company Genentech, Inc.; Fujirebio; GE Healthcare; IXICO Ltd.; Janssen Alzheimer Immunotherapy Research & Development, LLC.; Johnson & Johnson Pharmaceutical Research & Development LLC; Lumosity; Lundbeck; Merck & Co., Inc.; Meso Scale Diagnostics, LLC.; NeuroRx Research; Neurotrack Technologies; Novartis Pharmaceuticals Corporation; Pfizer Inc.; Piramal Imaging; Servier; Takeda Pharmaceutical Company; and Transition Therapeutics. The Canadian Institutes of Health Research is providing funds to support ADNI clinical sites in Canada. Private sector contributions are facilitated by the Foundation for the National Institutes of Health (www.fnih.org). The grantee organization is the Northern California Institute for Research and Education, and the study is coordinated by the Alzheimer's Therapeutic Research Institute at the University of Southern California. ADNI data are disseminated by the Laboratory for Neuro Imaging at the University of Southern California.

Appendix A. Supplementary data

Supplementary data to this article can be found online at <https://doi.org/10.1016/j.nicl.2019.101860>.

References

- Albert, M.S., 2011. The diagnosis of mild cognitive impairment due to Alzheimer's Disease: Recommendations from the National Institute on Aging-Alzheimer's Association workgroups on diagnostic guidelines for Alzheimer's Disease. *Alzheimer's Dementia*. 7, 270–279.
- Bakker, A., Krauss, G.L., Albert, M.S., Speck, C.L., et al., 2012. Reduction of hippocampal hyperactivity improves cognition in amnesic mild cognitive impairment. *Neuron*. 74, 467–474.
- Benjamini, Y., Hochberg, Y., 1995. Controlling the false discovery rate: A practical and powerful approach to multiple testing. *J. Roy. Statist. Soc. Ser. B* 57, 289–300.
- Boutet, C., Chupin, M., Lehericy, S., et al., 2014. Detection of volume loss in hippocampal layers in Alzheimer's Disease using 7T MRI: A feasibility study. *Neuroimage: Clin.* 5,

- 341–348.
- Braak, H., Braak, E., 1985. On areas of transition between entorhinal allocortex and temporal isocortex in the human brain: normal morphology and lamina-specific pathology in Alzheimer's Disease. *Acta Neuropathol.* 68, 325–332.
- Braak, H., Braak, E., 1991. Neuropathological staging of Alzheimer-related changes. *Acta Neuropathol.* 82, 239–259.
- Brier, M.R., Thomas, J.B., Snyder, A.Z., et al., 2012. Loss of intranetwork and internet-work resting state functional connections with Alzheimer's Disease progression. *J Neurosci.* 32, 8890–8899.
- Buckner, R.L., Snyder, A.Z., Shannon, B.J., et al., 2005. Molecular, structural, and functional characterization of Alzheimer's Disease: evidence for a relationship between default activity, amyloid, and memory. *J. Neurosci.* 25, 7709–7717.
- Cai, S., Huang, L., Zou, J., et al., 2015. Changes in thalamic connectivity in the early and late stages of amnesic mild cognitive impairment: a resting-state functional magnetic resonance study from ADNI. *PLoS ONE* 10 (2), e0115573.
- Chupin, M., Gerardin, E., Cuingnet, R., et al., 2009. Fully automatic hippocampus segmentation and classification in Alzheimer's Disease and mild cognitive impairment applied on data from ADNI. *Hippocampus.* 19, 579–587.
- Cox, R.W., 1996. AFNI: software for analysis and visualization of functional magnetic resonance neuroimages. *Comp Biomed Res.* 29, 1762–1873.
- Dale, A.M., Fischl, B., Sereno, M.I., 1999. Cortical surface-based analysis. I. Segmentation and surface reconstruction. *Neuroimage* 9, 179–194.
- Davatzikos, C., Xu, F., An, Y., et al., 2009. Longitudinal progression of Alzheimer's-like patterns of atrophy in normal older adults: the SPARE-D index. *Brain.* 132, 2026–2036.
- Dickerson, B.C., Bakkour, A., Salat, D.H., et al., 2009. The cortical signature of Alzheimer's Disease: Regionally specific cortical thinning relates to symptom severity in very mild to mild Dementia and is detectable in asymptomatic amyloid-positive individuals. *Cerebral Cortex.* 19, 497–510.
- Dillen, K.N.H., Jacobs, H.L.L., Kukolja, J., et al., 2017. Functional disintegration of the default mode network in prodromal Alzheimer's Disease. *J. Alzheimer's Disease.* 59, 169–187.
- Efron, B., 2010. Large-scale inference: Empirical Bayes methods for estimation, testing and prediction. *IMS Monographs.* Cambridge University Press, Cambridge.
- Eklund, A., Nichols, T.E., Knutsson, H., 2016. Cluster failure: Why fMRI inferences for spatial extent have inflated false-positive rates. *Proc. Natl. Acad. Sci. USA.* 113, 7900–7905.
- Fan, Y., Batmanghelich, N., Clark, C.M., et al., 2008. Spatial patterns of brain atrophy in MCI patients, identified via high-dimensional pattern classification, predict subsequent cognitive decline. *Neuroimage.* 39, 1731–1743.
- Fazekas, F., Chawluk, J.B., Alavi, A., et al., 1987. MR signal abnormalities at 1.5 T in Alzheimer's dementia and normal aging. *Am J Roentgenol.* 149, 351–356.
- Greicius, M.D., Srivastava, G., Reiss, A.L., et al., 2004. Default-mode network activity distinguishes Alzheimer's Disease from healthy aging: evidence from functional MRI. *Proc. Natl. Acad. Sci. USA* 101, 4637–4642.
- Huijbers, W., Mormino, E.C., Schultz, A.P., et al., 2015. Amyloid- β deposition in mild cognitive impairment is associated with increased hippocampal activity, atrophy and clinical progression. *Brain.* 138, 1023–1035.
- Iglesias, J.E., Augustinack, J.C., Nguyen, K., et al., 2015. A computational atlas of the hippocampal formation using ex vivo, ultra-high resolution MRI: Application to adaptive segmentation of in vivo MRI. *Neuroimage.* 115, 117–137.
- Jack, C.R., 2011. Alliance for aging research AD biomarkers group: structural MRI. *Neurobiol. Aging.* 32, S48–S57.
- Jack, C.R., Petersen, R.C., O'Brien, P.C., et al., 1992. MR-based hippocampal volumetry in the diagnosis of Alzheimer's Disease. *Neurology.* 42, 183–188.
- Jack, C.R., Petersen, R.C., Xu, Y., et al., 1998. The rate of medial temporal lobe atrophy in typical aging and Alzheimer's Disease. *Neurology.* 51, 993–999.
- Jack, C.R., Bernstein, M.A., Fox, N.C., et al., 2008. The Alzheimer's Disease neuroimaging initiative (ADNI): MRI methods. *J. Magn. Reson. Imaging.* 27, 685–691.
- Jack, C.R., Albert, M.S., Knopman, D.S., et al., 2011. Introduction to the recommendations from the National Institute on Aging-Alzheimer's Association workgroups on diagnostic guidelines for Alzheimer's Disease. *Alzheimer's Dementia.* 7, 257–262.
- Jack, C.R., Knopman, D.S., Jagust, W.J., et al., 2013. Update on hypothetical model of Alzheimer's Disease biomarkers. *Lancet Neurol.* 12, 207–216.
- Jack, C.R., Bennett, D.A., Blennow, K., et al., 2018. NIA-AA research framework: Toward a biological definition of Alzheimer's Disease. *Alzheimer's Dementia.* 14, 535–562.
- Jones, D.T., Machulda, M.M., Vemuri, P., et al., 2011. Age-related changes in the default mode network are more advanced in Alzheimer disease. *Neurology.* 77, 1524–1531.
- Jones, D.T., Vemuri, P., Murphy, M.C., et al., 2012. Non-stationarity in the resting brain's modular architecture. *PLoS ONE* 7 (6), e39731.
- Jones, D.T., Knopman, D.S., Gunter, J.L., et al., 2016. Cascading network failure across the Alzheimer's Disease spectrum. *Brain.* 139, 547–562.
- Lerch, J.P., Pruessner, J.C., Zijdenbos, A., et al., 2005. Focal decline of cortical thickness in Alzheimer's Disease identified by computational neuroanatomy. *Cerebral Cortex.* 15, 996–1001.
- Leung, K.K., Barnes, J., Ridgway, G.R., et al., 2010. Automated cross-sectional and longitudinal hippocampal volume measurement in mild cognitive impairment and Alzheimer's Disease. *Neuroimage.* 51, 1345–1359.
- Leung, K.K., Bartlett, J.W., Barnes, J., et al., 2013. Cerebral atrophy in mild cognitive impairment and Alzheimer disease. *Neurology.* 80, 648–654.
- McKhann, G.M., Knopman, D.S., Chertkow, J., et al., 2011. The diagnosis of dementia due to Alzheimer's Disease: recommendations from the National Institute on Aging-Alzheimer's Association workgroups on diagnostic guidelines for Alzheimer's Disease. *Alzheimer's Dementia.* 7, 263–269.
- Miller-Thomas, M.M., Sipe, A.L., Benzinger, T.L., et al., 2016. Multimodality review of amyloid-related diseases of the central nervous system. *Radiographics.* 36, 1147–1163.
- Misra, C., Fan, Y., Davatzikos, C., 2009. Baseline and longitudinal patterns of brain atrophy in MCI patients, and their use in prediction of short-term conversion to AD: results from ADNI. *Neuroimage.* 44, 1415–1422.
- Murphy, K., Fox, M.D., 2017. Towards a consensus regarding global signal regression for resting state functional connectivity MRI. *Neuroimage.* 154, 169–173.
- Nichols, T.E., Holmes, A.P., 2002. Nonparametric permutation tests for functional neuroimaging: A primer with examples. *Human Brain Mapp.* 15, 1–25.
- O'Bryant, S.E., Waring, S.C., Cullum, C.M., Hall, J., et al., 2008. Staging dementia using Clinical Dementia Rating Scale Sum of Boxes scores: a Texas Alzheimer's research consortium study. *Arch. Neurol.* 65, 1091–1095.
- Palop, J.J., Mucke, L., 2010. Synaptic depression and aberrant excitatory network activity in Alzheimer's Disease: Two faces of the same coin? *Neuromol. Med.* 12, 48–55.
- Putcha, D., Brickhouse, M., O'Keefe, K., Sullivan, C., et al. Hippocampal hyperactivation associated with cortical thinning in Alzheimer's Disease signature regions in non-demented elderly adults. *J. Neurosci.* 31, 17680–17688.
- Scheltens, M., Leys, D., Barkhof, F., et al., 1992. Atrophy of medial temporal lobes on MRI in "probable" Alzheimer's Disease and normal ageing: diagnostic value and neuropsychological correlates. *J. Neurol. Neurosurg. Psychiatry.* 55, 967–972.
- Schuff, N., Woerner, N., Boreta, L., et al., 2009. MRI of hippocampal volume loss in early Alzheimer's Disease in relation to ApoE genotype and biomarkers. *Brain.* 132, 1067–1077.
- Sepulcre, J., Sabuncu, M.R., Li, Q., et al., 2017. Tau and amyloid β proteins distinctively associate to functional network changes in the aging brain. *Alzheimer's Dementia.* 13, 1261–1269.
- Sheline, Y.I., Raichle, M.E., 2013. Resting state functional connectivity in preclinical Alzheimer's Disease. *Biol. Psychiatry.* 74, 340–347.
- Smith, S.M., Zhang, Y., Jenkinson, M., et al., 2002. Accurate, robust and automated longitudinal and cross-sectional brain change analysis. *Neuroimage.* 17, 479–489.
- Sorensen, L., Igel, C., Liv Hansen, N., et al., 2016. Early detection of Alzheimer's Disease using MRI hippocampal texture. *Hum. Brain Mapp.* 37, 1148–1161.
- Sorg, C., Reidl, V., Muhlau, M., et al., 2009. Selective changes of resting-state networks in individuals at risk for Alzheimer's Disease. *Proc. Natl. Acad. Sci. USA.* 104, 18760–18765.
- Sperling, R.A., Dickerson, B., Pihlajamaki, M., et al., 2010. Functional alterations in memory networks in early Alzheimer's Disease. *Neuromolecular Med.* 12, 27–43.
- Sperling, R.A., Aisen, P.S., Beckett, L.A., et al., 2011. Toward defining the preclinical stages of Alzheimer's Disease: Recommendations from the National Institute on Aging-Alzheimer's Association workgroups on diagnostic guidelines for Alzheimer's Disease. *Alzheimer's Dementia.* 7, 280–292.
- Wahlund, L.O., Barkhof, F., Fazekas, F., et al., 2001. A new rating scale for age-related white matter changes applicable to MRI and CT. *Stroke.* 32, 1318–1322.
- Ward, A.M., Schultz, A.P., Huijbers, W., et al., 2014. The parahippocampal gyrus links the default-mode cortical network with the medial temporal lobe memory system. *Hum. Brain Mapp.* 35, 1061–1073.
- Weiner, M.W., Veitch, D.P., Aisen, P.S., et al., 2015. Impact of the Alzheimer's Disease neuroimaging initiative, 2004 to 2014. *Alzheimer's Dementia.* 11, 865–884.
- Wiepert, D.A., Lowe, V.J., Knopman, D.S., et al., 2017. A robust biomarker of large-scale network failure in Alzheimer's Disease. *Alzheimer's Dement.* 6, 152–161.
- Wolk, D.A., Das, S.R., Mueller, S.G., et al., 2017. Medial temporal lobe subregional morphometry using high resolution MRI in Alzheimer's Disease. *Neurobiol. Aging.* 49, 204–213.
- Woo, C.-W., Chang, L.J., Lindquist, Wager, D. T., 2017. Building better biomarkers: brain networks in translational neuroimaging. *Nat. Neurosci.* 20, 365–376.
- Yushkevich, P.A., Amaral, R.S.C., Augustinack, J.C., Bender, A.R., et al., 2015. Quantitative comparison of 21 protocols for labeling hippocampal subfields and parahippocampal subregions in in vivo MRI: Towards a harmonized segmentation protocol. *Neuroimage.* 111, 526–541.
- Zhou, J., Greicius, M.D., Gennatas, E.D., et al., 2010. Divergent network connectivity changes in behavioral variant frontotemporal dementia and Alzheimer's Disease. *Brain.* 133, 1352–1367.